

PROCESSED POULTRY

PHILADELPHIA — Sept. 4 — Processed poultry, ready-to-cook (ice packed) young chickens — unsettled. More than sufficient supplies were available for the fair demand, at slightly reduced prices.

Prices paid delivered warehouse, Philadelphia (cents per lb) Grade A & U.S. grade A, 2-3 lb 31½-35 cents, mostly 32-33½ cents. Hens: ready-to-cook (ice packed) about steady. Demand was fair for more than sufficient supplies.

Prices paid delivered warehouse, Philadelphia (cents per lb) Grade A & U.S. grade A 4-5½ lb 32-33 cents.

Receipts Sept 3 included other than turkeys—Maryland, 107,000 lbs.; N. Carolina, 59,000 lbs., Delaware, 103,000 lbs.; Georgia, 19,000 lbs.; Virginia, 35,000 lbs.

Wednesday New York Egg Market

By Urner-Barry			
Nearby Whites			
Extra Fancy Heavyweights		57	-57½
Mediums		47	
Pullets		30	
Peeweese		20	
Nearby Browns			
Extra Fancy Heavyweights		57	
Mediums		46	-46½
Pullets		33½	
Peeweese		20	
Midwestern Mixed			
Fancy Heavyweights		47½	
Mediums		39½	
Standards		37	
Checks		29	-30
Midwestern Whites			
Fancy Heavyweights		550	
Mediums		42	
Midwestern Browns			
Fancy Heavyweights		49½	

NEW YORK, Sept 4 — Fancy large fresh eggs backed up in receivers hands this morning under a slack in buying interest and an increase in receipts. Prices fell off on nearby whites and Midwestern mixed. Particularly active demand continues for mediums, especially near-by whites and browns with prices advancing further

Weekly Egg Price Review

NEW YORK WHITES:	Thurs., 29	Fri., 30	Mon., 2	Tues., 3
Ex Fcy Hywts	59 -60	60	No	60
Mediums	44 -45	45	Sales	46
Pullets	28½	29¼	Due	30
Peeweese	19½	19½	to	20
NEW YORK BROWN:				
Ex Fcy Hywts	56 -57	57	Labor	57
Mediums	41 -42	42	Day	43½
Pullets	32½	33¼-33½	Holiday	33½
Peeweese	19½	19½		20

State Assigns Five Veterinarians To Assist in Lebanon Co. Testing

HARRISBURG — State Agriculture Secretary William L. Henning today assigned five veterinarians to assist cattle owners in six townships of Lebanon County in bringing bovine brucellosis or Bang's disease under control.

A concentrated campaign to sign up herd owners and test all cattle in the last six townships in Pennsylvania that have not yet qualified for testing will start on Sept 16, Henning announced. The Department of Agriculture will make the team of veterinarians available as a special service to the owners of approximately 8,000 head of dairy and beef breeding cattle. Nearly 280 herds remain to be tested in the townships of Heidelberg, Jackson, Swatara, Millcreek, South Lebanon and North Lebanon, the Secretary said.

These townships are the only ones in the State where brucellosis testing has not been started on an area basis, he explained. Pennsylvania now has 57 of its 67 counties certified as brucellosis-free by the State and Federal Departments of Agriculture. It is expected that the entire State can be certified by early 1958, Henning declared.

Herd owners are offered two plans to test under the voluntary program for control and eradication of the disease which causes abortion in cattle and loss of milk production. Area testing is the most common, with veterinarians paid by the State. Under the individual plan, herd owners must pay their own veterinarians for drawing blood samples from each animal in the herd.

Premium Lists Now Available For Exposition

(Continued from page one)

tries only. Included in the Pennsylvania open will be carcass shows for market steers, barrows and wethers, also special 4H Club and Future Farmers of America junior steer classes.

Beef cattle exhibitors will compete for premiums totaling \$43,000. Premiums for sheep exhibitors will total nearly \$10,000 and \$12,661 will be offered swine exhibitors. The junior steer show will provide \$3,505. Additional prize money will be offered in special carcass shows.

Included in the total premium offering is \$50,000 provided by the State Legislature to the State Department of Agriculture as an aid toward advancement of the livestock industry in Pennsylvania.

An added feature of the exposition is a six-performance real wild west rodeo in which more than 200 of the nation's top professional cowboys will compete for world championship honors and \$15,000 in prize money. It is sanctioned by the Rodeo Cowboys Assn. and will include personal appearances by at least two popular western movie and TV stars.

PHILADELPHIA EGGS

(BY USDA) PHILADELPHIA — Sept. 4 — Unsettled. Prices declined on top quality large white and on large mixed shell eggs. Increased supplies were available for the relatively lighter day-to-day demand for large and the good demand for mediums.

Wholesale selling prices minimum 10 per cent AA quality, large 45-48 lb white 57-60, brown 56-58, medium white 46-47, brown 42-43. Extras, minimum 60 per cent A quality large 45-50 lb white 48-52, mixed 47½-49½, medium white 42-43, mixed 40-41, standards 35-36, checks 26-27.

Prices to retailers in cartons (cents per dozen) Grade A & US grade A, large whites 68½-73, mostly 70-72, browns 66-72, mostly 68-69. Grade A & US grade A medium whites 53-58, mostly 53-55, browns 48-58, mostly 51-55. Grade B & US grade B large whites 55-69, mostly 56-57; browns 55-69, mostly 56-57. Receipts Sept. 3, 7,200 cases by truck.

New Injection for Stock Sought
A substitute for ethylene dibromide in the injection treatment of nursery stock for quarantine certification is being sought by entomologists and chemists at USDA's entomology laboratory in Moorestown, N.J.

Shipments of plants (with roots encased in soil) from regulated parts of 15 States under Japanese beetle quarantine and three States under European chafer quarantine are treated to kill grubs present. The approval certificate is then granted by Federal and State officials for movement.

LOANS

For any farm purpose Made the farmer's way

LANCASTER PRODUCTION CREDIT ASS'N. 36 E. Chestnut St. Lancaster, Pa. Ph. Lanc. EX 3-3921

Lancaster Markets

(Continued from page 2)

200-220 lbs \$22 25 22 75, a few head to \$23 on Tuesday. Weights 160-180 lbs mixed grade slow, \$20 50-21 50 Weights over 240 lbs. scarce. Sows mixed US 1-3, 270-550 lbs. \$14 50-18 50, a few light smooth sows to \$19 00.

SHEEP Two days 331, week ago 707. Supply mainly native and a few Virginia spring lambs. Most lambs graded low choice and below. Slaughter lambs mostly steady with last Wednesday. Bulk good and low choice spring lambs \$21.50-24.00, utility and low good \$16 00-21.00, culls down to \$13 00. Aged sheep scarce

CyCology SEZ



SOME MEN ARE SO CONCEITED ON THEIR BIRTHDAYS THEY SEND A TELEGRAM OF CONGRATULATIONS TO THEIR MOTHERS —

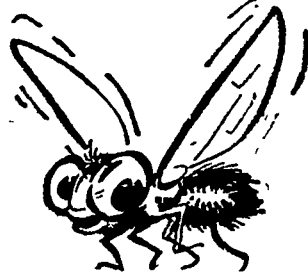
We're proud as a peacock about the way our customers recommend our service. It takes a heap of satisfaction to make them talk that way.

- Forage Blower I. H. and N. H.
- 1 Complete Silage Unloading Kit
- 25% off on N. H. 800 Forage Harvester

Cope & Weaver

WILLOW ST Ph. Lanc. EX 3-3324

KILLS FLIES!



KLEEN-KOW Cattle Fly Spray

with NEW REPELLENT RC-11

For space spraying use KLEEN KOW AEROSOL

1 or 3 lb. Disposable ask your dealer



Stretch Your Grain with Sugared Schumacher Feed

It's an

ALL-PURPOSE Livestock Feed

for DAIRY & BEEF CATTLE HOGS, SHEEP & HORSES

YOU'LL LIKE YOUR FEEDING RESULTS when you feed Quaker Sugared Schumacher Feed to your livestock—either as the entire grain ration or in combination with other grains. You see, it's a blend of grain products plus molasses, added proteins and minerals—including important trace minerals. It's nutritious, palatable and digestible. And it's priced right . . . for economical feeding.



Contains:

- ✓ GRAIN PRODUCTS from corn, oats, wheat, barley
- ✓ MOLASSES
- ✓ ADDED MINERALS including trace minerals
- ✓ ADDED PROTEIN

See or call us today for Sugared Schumacher

Millport Roller Mills Lititz, R.D.4, Pa.

J. C. Walker & Son Gap, Pa.

S. H. Hiestand & Co. Salunga, Pa.

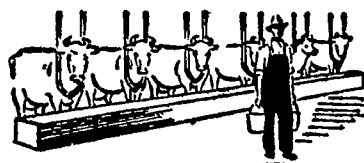
Grubb Supply Elizabethtown, Pa.

George Rutt Stevens R. D. 1. Pa.

Paul M. Ressler & Son Paradise, Pa.

D. W. Hoover East Earl, R. D. 1. Pa.

Give your barn extra efficiency!



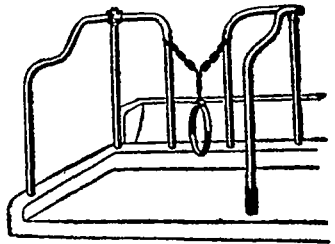
UNICO BARN EQUIPMENT

Quality built for years of extra service

Unico No. 51 TIE STALL

High Carbon Steel Tubing. Neat appearing and easy to clean. Comes in 3'6" to 4' widths, height 46". Finished with rust resistant prime coat and gray enamel—both coats baked on.

ONLY \$17.95



Non-Siphoning WATER BOWL

Cast Iron Construction. Operates efficiently on high or low water pressures. U.S. Public Health Service Approved

MODEL NS 90, \$6.25

14 Bushel All Steel FEED TRUCK

Tapered feed box allows wheels to clear walls and corners. Rubber tired, roller bearing wheels.

MODEL 453, \$73.55



Lancaster—Manheim—New Holland—Quarryville