

Dairymen to Select Favorite Dairy Barn Equipment Dealer

Just to be different, instead of a queen, dairy farmers in a 14 state area—Maine through Maryland and west to Michigan—will vote a favorite dairy barn equipment dealer this summer.

The dealer receiving the largest number of votes through the

contest period—July 1 to Sept. 15—will fly to Paris, France, with his wife for a two week all-expense paid vacation

As a token of appreciation for their votes, all dairymen that cast votes for the winning dealer will receive a gift mailed back to them by the dealer from France

Albert J. Magness acting as spokesman for the contest committee told those present at the kick-off meeting in Bel Air, Md., that all dairy barn equipment dealers in the 14 state area are eligible to register for the contest regardless of the manufacture of equipment handled. Only dairy farmers are eligible to vote and official ballots must be used. All dealers are required to register on official registry cards also, he said.

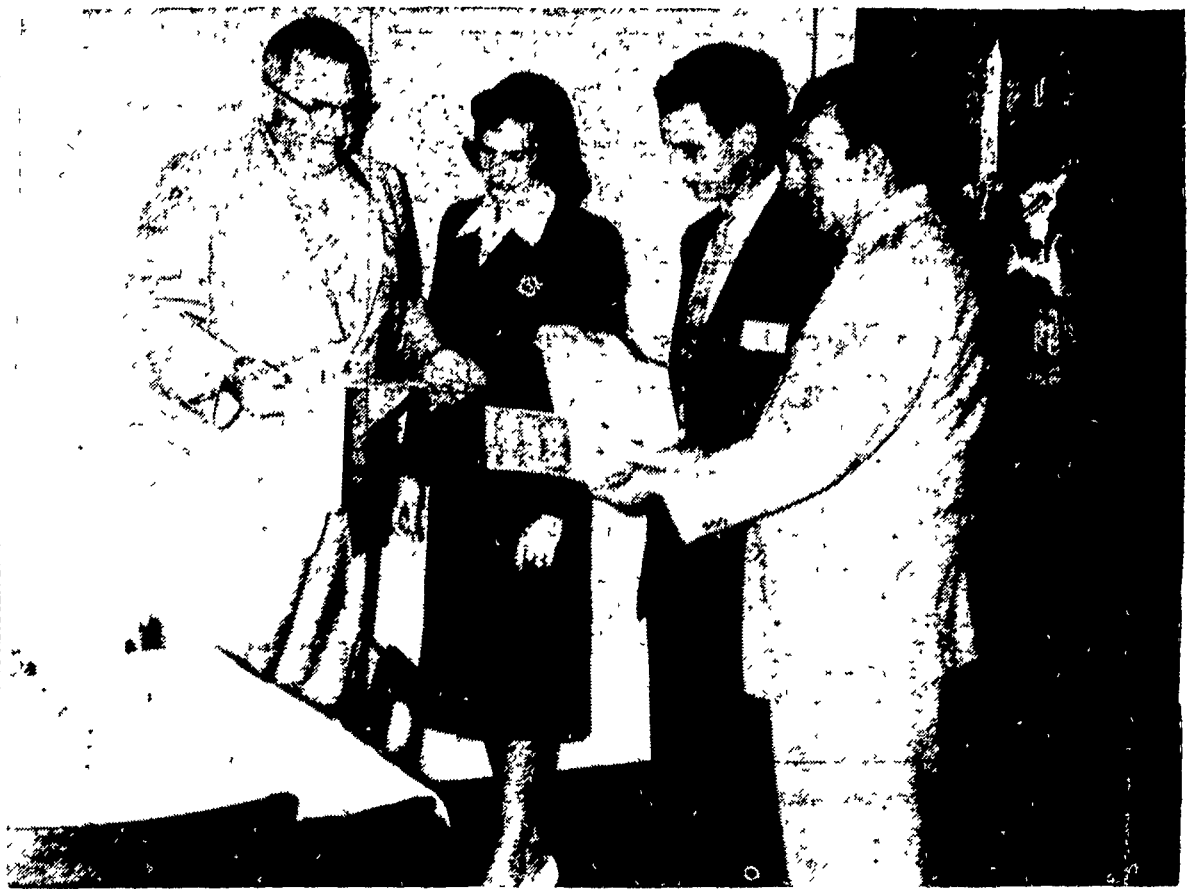
Donald L. Ace, Penn State dairy specialist in charge of barn remodeling and herd management and a member of the contest committee, told the gathered group that "a dairy farmer himself knows how valuable the assistance is that his dairy barn equipment dealer neighbor gives him year in and year out, but it isn't too often that anyone really pats the dealer on the back for the many favors done the dairyman during the year."

"We thought it would be nice to call attention to the fellows at the cross-roads equipment stores who often pitch in during odd hours to thaw out and replace frozen barn pipes, do fast weld jobs on broken barn door tracks, or make barn renovation plans, limited space and farm budgets meet."

The selection of a favorite dairy barn equipment dealer is being sponsored by Standard Equipment, Inc., Bel Air. Among the co-sponsors are dairy and extension groups in the various states: Slaysman Co., Baltimore; Lincoln Electric Co., Cleveland; Southern Galvanizing Co., Baltimore, W. Ames & Co., Jersey City, N. J., and Lasting Products Co., Baltimore.

Folders describing the contest and registration cards are available to dairy barn equipment dealers from any of the sponsoring groups.

Ballots for dairy farmers and folders describing the contest are available from the same groups and from local dairy barn equipment dealers participating in the contest.



FRENCH HOSTESS, craft gifts, and tours of the French countryside all enter the picture here as Standard Equipment Inc., Bel Air, Maryland looks over plans for its unique search for a favorite dairy barn equipment dealer. Left to right: Albert

S. Magness, president of Standard Equipment Inc.; Air France hostess, Bud Hartung, M. W. Hartung & Associates, New Holland, and Tracey Preston in charge of Standard's Dairy Barn Equipment Division.

Farmers Supply



Good Pastures Mean Good Livestock— Use PASTURGO

PASTURGO is specially formulated to meet pasture needs. It supplements plant nutrients in your soil. It gives the balance of growth elements needed to produce grass and legumes with higher feeding value and greater carrying capacity.

Use Pasturgo During September to improve your grassfields.



FOR FALL SEEDING — RYE OATS BARLEY WHEAT

Blenn is a specially formulated plant food for wheat-Oats - Barley - Rye; fortified with extra growth elements to meet the soil needs. Produces heavy yields.

HYBRID CORN

Check results of our H.780 Hybrid Corn this fall before ordering for 1958 season. Growth has been outstanding during the dry summer.

FIELD SEEDS

- Domestic Rye Grass
- Permanent Pasture
- Red Clover
- N. W. Alfalfa
- Grimm Alfalfa
- Buffalo Alfalfa
- Timothy

WINTER RYE

Tetra Petkus — Balboa

SEED WHEAT

Fennoll — Thorne — Seneca

WINTER OATS

Le Conte — Du Bois

WINTER BARLEY

Wong — Kenbar — Hudson

FARMERS SUPPLY CO.

137 E. KING ST.

Open daily 8:30 Friday till 9

Letter to the Editor

Dear Sir A subscriber asked for this verse. It is very dear to me as I still remember it from my youth and now again my children had it in school, so it makes it more plain to me.

Great, wide, beautiful, wonderful world
With the wonderful waters around you curled
The wonderful grass upon your breast —
World you are beautifully dressed

The wonderful air is over me,
The wonderful wind is shaking the trees,
It walks on the water and whirls the mills
And talks to its self on top of the hills.

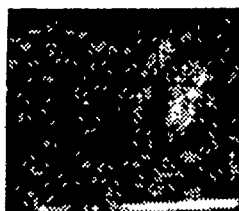
You friendly earth how far do you go,
With the wheat fields that nod and rivers that flow,
With cities and gardens and cliffs and isles
And people upon you for thousands of miles?

Ah! You are so great and I am so small
I can hardly thing of you world at all.
And yet when I said my prayers today
My mother kissed me and said quite gay.

You are more than the earth
Though you are but a dot
You can love and think —
And the earth can not.

Esther Weaver
Manheim, Pa.

HERE IS THE NEW PURINA HOG PROGRAM



1. Start litter on new, improved Purina Baby Pig Chow. Then creep feed Purina Pig Startena until 3 weeks after weaning.



2. Put pigs on growing ration of 4 parts grain and 1 part Purina Hog Chow until pigs are about 3 months old.



3. For last 6 weeks, feed 9 parts grain to 1 part New Purina Hog Chow. Feed either free choice or mixed, in correct proportions.

Now...market hogs in 4²/₃ months

New Purina feeding program weans pigs at six weeks....
grows pigs to 190 lbs. in 4²/₃ months... cuts feed costs 4%... 1 lb. of pork for every 3.26 lbs. of feed, from weaning to market... conditions sows faster for next farrowing.

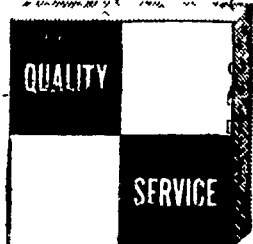
Every year more proof piles up that hogs should be fed according to age and weight requirements. Young pigs use feed differently than do older hogs. They need more protein... more vitamins... more of the expensive parts of the ration. But, as pigs grow, they become more efficient users of carbohydrates—the less costly part of rations. The proportion of cheaper carbohydrates can be rapidly increased.

Tests at the Purina Research Farm showed that this new program cut feed costs an average of 4% below any previous Purina Program... produced each pound of pork on only 3.26 lbs. of feed from weaning to market. It also gave sows the chance to recover faster from farrowing and nursing. Sows were ready to breed

again in less time than when pigs were weaned at 9 weeks.

Improved Purina Hog Chows Make Program Click

Purina Baby Pig Chow and Pig Startena, the famous Fast-Start Twins, have been further improved to take advantage of the newest research findings. Purina Hog Chow has been improved to the point where you may now use 33% more grain during the last six weeks than on previous Purina Hog Programs. Be sure to feed right... follow the recommended steps closely. The fast gains, early weaning, and increased efficiency of this new Purina Hog Program can be yours when you feed these high-quality Chows in the way research has proved they should be fed for top results.



FEED PURINA...YOU CAN DEPEND ON THE CHECKERBOARD

Wenger Bros.
Rheems

Warren Sickman
Pequea

B. F. Adams
Bird-in-Hand

John J. Hess II
Intercourse—New Providence

S. H. Hiestand
Salunga

Snader's Mill
Mt. Airy

John B. Kurtz
Ephrata

James High
Gordonville

John J. Hess
Kinzers—Vintage

J. Fred Whiteside
Kirkwood

Blend & McGinnis
Atglen