

## Rough and Tumble Engineers Draw 20,000 to Ninth Annual Reunion

The ninth annual reunion of the Rough and Tumble Steam Engineers Historical Assn. drew a combined attendance of 20,000 last Thursday, Friday and Saturday.

The reunion, featuring steam propulsion and power of all sorts, was held at the Arthur S Young grounds in Kinzers.

The model exhibits were hand-made and antique engines of all descriptions. Oldest engine present was a miniature made by James Watts in 1757, owned and exhibited by Joseph S Roches of Yardley, Bucks Co., Pa.

On exhibit were engines providing power for thrashers, balers, a saw mill and a fan.

In addition to the engines, there was a demonstration of the use of horses and dogs in provid-

ing tread power, and horses on a sweep.

Steam engineers, young and old, from all over the East attended the annual event.

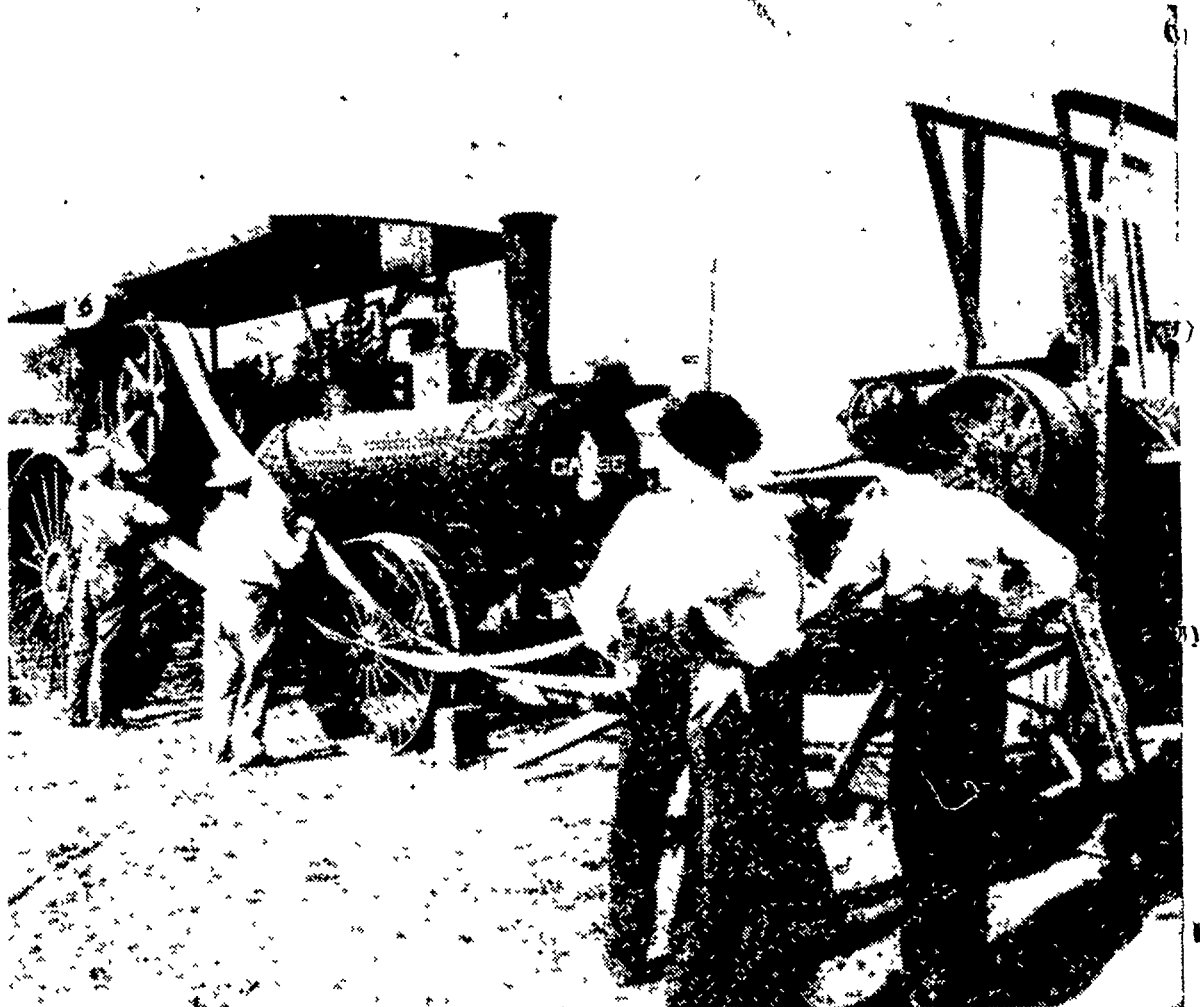
Everett Young, Kinzers, was re-elected president of the association. Other officers named Friday night were first vice president, M. D. Mast, Lancaster, second vice president, W. G. Eshleman, Lancaster, secretary treasurer, Mrs. Jane Y. Brackbill, Kinzers, chaplain, the Rev. Elmer Ritzman, Enola and solicitor, Ralph W. Eby, Paradise.

## 'Green Plasma' Not Tested USDA Declares

The U.S. Department of Agriculture today reported that its turf specialists have never tested a product called "Green Plasma," contrary to claims made in advertisements that have appeared recently in a number of newspapers in various parts of the United States.

Promoters of the product have described it as a sensational color-restorer for lawns, discovered by a German scientist, and tested by the U.S. Department of Agriculture. The product is further claimed to be "the very same type wonder treatment" used on the Capitol lawn in Washington, D.C.

Scientists of USDA's Agricultural Research Service who test plant foods and fertilizers, and dyes sometimes used to color plants, point out that they have not tested the advertised product, and have made no recommendations regarding its use.



ONE OF THE MARKS OF SKILL of a steam engineer is his ability to belt-up to a piece of equipment quickly and easily. One of the events to determine this skill at the Ninth Annual Reunion of the

Rough and Tumble Engineers Historical Society was belting up to a large fan with a short belt and the engine on a down grade. (LF Photo)

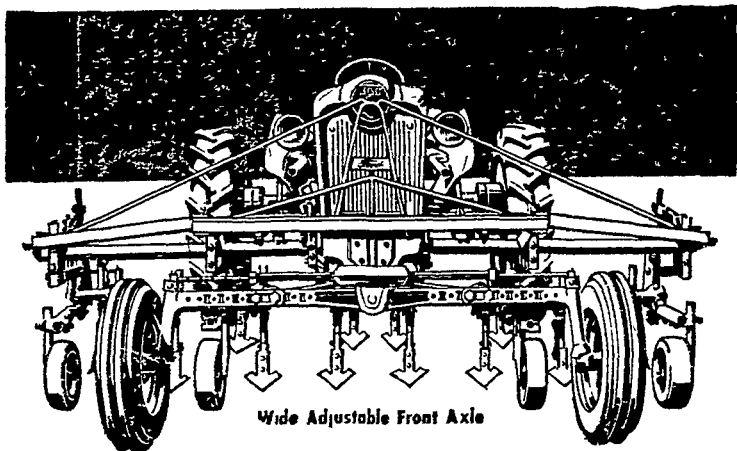


This year, step up your poultry income. Get increased production of large size, top quality white eggs early—get higher livability. Special low summer price. Try the K-137 Leghorn and compare!

FREE! Write for new booklet—get all the facts. Address Box 19.

order direct from HUBBARD FARMS

Lancaster, Pa. EX 2-2154

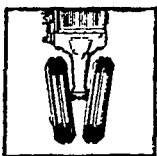


YOU CAN HAVE

# Better Performance!

WITH A FORD

## ROW CROP TRACTOR



Single Front Wheel

Whatever your row crop, whatever your method of planting and cultivating, you'll find a Ford Row Crop Tractor to meet your needs. Both the powerful 3-4 plow 900 Series and the 2-3 plow 700 Series provide dependable, economical performance for 4-row or 2-row planting, cultivating and fertilizing equipment, regardless of the type of front end. And power steering is standard at no extra cost!

Come in and see us for more information



Allen H. Matz

Ph. AN 7-6502 Denver

Sauder Bros.

New Holland

Ph. EL. 4-8721

Elizabethtown Farmers Supply Inc.

Ph. EM 7-1341

Conestoga Farm Service

Quarryville

Ph. ST 6-2597

Haverstick Bros.

Columbia Pike

Lancaster Ph. EX 2-5722



You're the BIG News in our lives! We've heard so much about you. Hope the Boss reads this and starts that "Early Bird" Program for us.

They say it looks good, is good, and costs less than most High Quality Feeds.

Why not sharpen your pencil, Boss, and let's get going! There's a Sales-Service man close by and these folks do business the Lancaster County Way. Know what I mean?

Make Good with "Early Bird" Feeds... In bags or bulk, to Suit Your Needs.



## MILLER & BUSHONG, INC.

Manufacturers of Fine Feeds Since 1875

ROHRERSTOWN, PENNA.

Success Is A Journey . . . Not A Destination

