

Broiler Average Nearly Steady At Lancaster Exchange Thursday

LANCASTER—The broiler average dropped only slightly from the preceding week at the Lancaster Poultry Exchange Thursday. A broiler sale of 122,200 birds averaged 22.69 cents, down .06 of a cent from the preceding Thursday.

This price compares very favorably with the 19.25 cents average of the same sale a year ago.

Selling besides the broilers were two lots, 1,750 Leghorn fowl for 14 1/4 cents, three lots of capettes for 26 1/2 cents and 28 3/4 cents, and 500 heavy fowl, moving at 18 3/4 cents

Here is the Aug. 15 sale by lot number, owner with grower in parenthesis, amount and breed, age in weeks and days buyer and price.

1. John K. Curry & Sons (Edwin L. Funck), 8,000 White Vantress, 9, Victor F. Weaver Inc., 22 1/2 cents. 2. Warren Shearer, 6,000 White Vantress and White Mountains, 9-6, H. W. Longacre Inc., 22 3/4 cents. 3. Stephen Notestine, 10,000 White Vantress, 9-2, no sale, 22 1/4 cents bid. 4. Stephen Notestine, 10,000 White Vantress, 9-2, no sale, 22 1/4 cents bid. Miller & Bushong (Elmer Beiler), 2,500 White Vantress, 9-3, Victor F.

LIVE POULTRY

PHILADELPHIA AUG. 21 — Unsettled. Demand only fair for most classes with more than adequate supplies available. Some buyer preference shown for yearling hens and large pullets and caponettes. Ordinary quality colored hens light type hens and fryers were in slow sale.

Wholesale selling prices No. 1 and fancy quality. Broilers light type under 3 lb 23. Broilers or fryers heavy type under 3 lbs 24 1/2-25 3-4 lb 23-26. Pullets 4 1/2 lb and over 30-31. Hens heavy type 18-24 light type 12-13 Old roosters 8. Ducks pekings 22-28.

Weaver Inc., 22 1/2 cents. 6. M&B (G. Walter Jackson), 1,500 Indian Rivers, 9-3, Victor F. Weaver Inc., 22 1/2 cents. 7. M&B (Joseph F. Bushey), 9,000 White Vantress, 10, College Hill Poultry, 22 1/2 cents. 8. M&B (Joseph F. Bushey), 9,000 White Vantress, 10, College Hill Poultry, 22 1/2 cents. 9. David E. King, 500 White Vantress (Arbor Acres), 9-2, Ray W. Gible, 23 1/4 cents. 10. Clair Graybill, 1,000 White Vantress, 9-6, Walter B. Lehman, 23 cents. 11. Indian River Farm (Jack H. Michael), 2,800 Indian River Whites, 9-3, Victor F. Weaver Inc., 22 1/4 cents. 12. Ray R. Shultz, 1,500 Indian Rivers, 9-3, no sale, 21 1/4 cents bid. 13. Eugene Schlosnagle, 8,400 White Vantress, 10, Victor F. Weaver Inc., 22 3/4 cents. 14. Eugene Schlosnagle, 8,400 White Vantress, 10, Victor F. Weaver Inc., 22 3/4 cents. 15. Floyd Kaffensberger, 5,000 Indian Rivers, 9-6, Victor F. Weaver Inc., 22 1/2 cents. 16. Morgantown Feed (Paul

Lancaster Markets: 600 More Cattle Offered; Prices Steady

By DAVID S. LORENSEN
Federal-State Market News Service
LANCASTER — CATTLE: days 4,318, week ago 3,742. Compared with last Wednesday slaughter steers and heifers steady to weak. Cows fully steady, bulls mostly steady. Trading slow on stockers and feeders; prices about steady. The week's receipts comprised around 35 per cent stockers and feeders and 12 per cent cows. Around 60 loads of fed steers were offered.

Bulk choice fed steers 1,000-1,250 lbs. \$24.50-26.50, high choice and mixed choice and prime \$26.75-27.25, a few loads prime \$27.40-27.70, two loads prime 1,340 and 1,287 lbs. \$28 and \$29. Bulk good and low choice steers \$22.50-24.50, some standard

Livengood), 1,500 White Cornish Cross, 10-5, Roy E. Ream, 23 cents. 17. Morgantown Feed (Ammon P. Stoltzfus), 700' Leghorn Yearling fowl, Roy E. Ream, 14 1/4 cents. 18. Charles Shreiner Jr., 1,000 White Rock capettes, 12-2, Carl B. Risser, 26 1/2 cents. 19. Enos Buckwalter (Ivan H. Hess), 4,000 White Cornish cross, 10, Meader's Poultry, 22 1/2 cents. 20. Robert B. Noll, 2,000 White Vantress, 10-1, Carl B. Risser, 23 cents. 21. Robert B. Noll, 2,000 Martin's New Whites, 10-1, Carl B. Risser, 23 1/4 cents. 22. Robert B. Noll, 2,000 White Vantress, 10-1, Roy E. Ream, 23 1/4 cents. 23. Millport Roller Mills (Howard Kreid-

and low good \$20.50-22.25. Scattered lots good and choice 620-775 lb. fed heifers \$20.50-22.75, load 818 lb. mixed high choice and prime \$25. Bulk utility and commercial cows \$13.50-15.50, canners and cutters 10-14.75. Utility and commercial bulls \$16.25-19.50, good fed yearling bulls to \$22, cutter grades \$15-16.

Bulk medium and good stocker and feeder steers and light yearlings 495-1,000 lbs. \$19.50-22, several loads good fleshy feeding steers 950-1,125 lbs. \$22-22.75, one load 996 lbs. \$23.40. Common and medium stock steers \$16.50-19.50.

CALVES: 788, week ago 765, Veal calves fully steady to strong. Bulk good and choice vealers \$22.50-28, a few choice and prime to \$30 Utility and standard \$16-22.50.

HOGS. 1,265, week ago 1,480. Barrows and gilts 25-50 cents lower than last Wednesday. Sows about steady. Scattered lots mostly No 1 200-220 lbs. in Wednesday trade at \$22, a few to \$22.50 to local small killers, but bulk of supply No. 2 and 3, 190-240 lbs. unsold late Comparable grades Monday, \$21.75-22. Sows this week mostly \$14.50-18 for No. 1-3, 270-550 lbs.

SHEEP. 568, week ago 464 The supply mainly native spring lamb. Slaughter lambs fully steady to strong. Bulk good and choice spring lambs \$22-25, utility and low good \$16-21.50. Aged sheep scarce.

ATTENTION FARMERS!

Did you know that you can save \$2.50 per ton on Dairy Feed on car door orders? Now, that the corn crop is really short, why not come in and place your order for several tons?

| | | | |
|----------------|--------|------------------------|------|
| 16% Dairy | \$3.45 | Enriched | |
| Bulky Mix | 3.70 | Fitting Ration | 3.55 |
| Brewers Grains | | Hog Feed | 3.70 |
| with molasses | 3.55 | Fine Chick | 4.90 |
| Enriched | | Horse Feed | 3.85 |
| Milkers Ration | 3.90 | Corn | 3.50 |
| | | Water Softener Pellets | 2.19 |

Also available — 20%, 24%, and 32% Dairy Special Chop for hogs, steers, young heifers, & sheep.

Closed Labor Day

ALTMAN'S CASH FEED STORE

WILLIS H. WEAVER MANAGER

947 Harrisburg Ave. Phone Lanc. EX 4-7715

10c per hundred discount on half ton lots or more.

PRICES SUBJECT TO CHANGE — WE DELIVER

Pick your corn with a PROVED CHAMPION

... the Dearborn-Wood Bros. **CORN PICKER!**
1-Row Pull Type



This corn picker can give you the same kind of quick, clean and complete picking performance that's won awards in many contests. Let it help you make more money from your corn.

It's easy to operate... low-cost... efficient
Come in and see it now

Allen H. Matz

Ph. AN 7-6502 Denver

Sauder Bros.

New Holland

Ph. EL. 4-8721

Elizabethtown Farmers Supply Inc.

Ph. EM 7-1341

Conestoga Farm Service

Quarryville

Ph. ST 6-2597

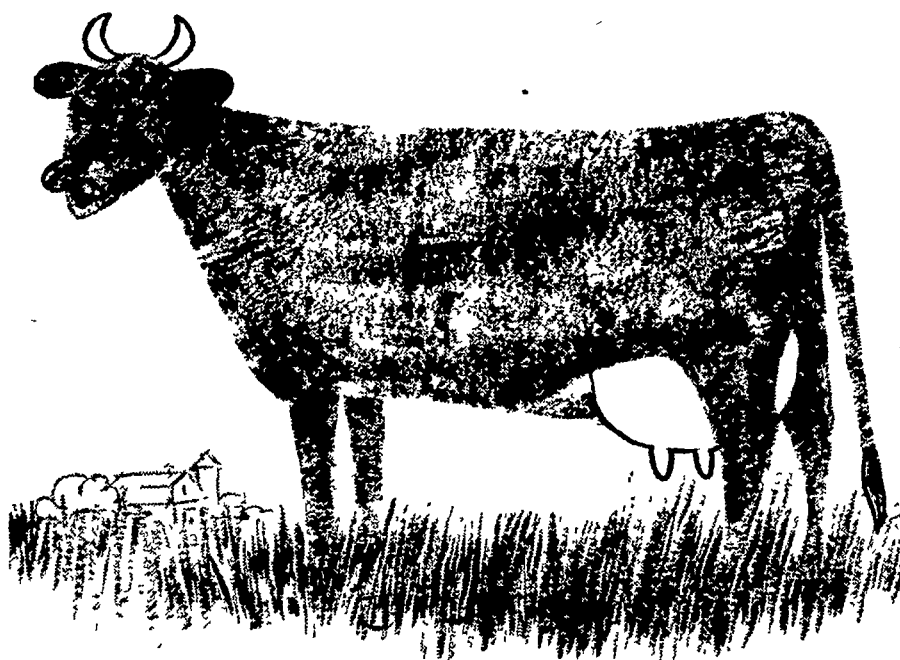
Haverstick Bros.

Columbia Pike

Lancaster Ph. EX 2-5722

BEACON-TROL with BE-CO-LASS...

for better bloom at show time...
for better condition at calving time



Be-Co-Lass is a bulky conditioning feed and a valuable supplement to pasture feeding. It keeps the digestive tract in good condition and keeps cows on feed because they like its rich, sweet flavor.

In Be-Co-Lass you have a uniform mixture of beet pulp, bran, crushed oats, minerals and molasses with dehydrated alfalfa which includes the carotene or provitamin A necessary to vigorous health.

Compared with beet and citrus pulps, Be-Co-Lass is higher in protein, has many times the content of Vitamins A and D and trace minerals.

Be-Co-Lass assures superior bloom during the show season. Before freshening it helps prevent udder congestion... then contributes to heavy milk production without creating excessive fat.

Many dairymen whose herds are consistently high in production tell us of the unusual values of Be-Co-Lass as a roughage stretcher and conditioner.

See your nearest Beacon Dealer and examine a sample of Be-Co-Lass... or write your nearest Beacon office for complete information on Be-Co-Lass and Beacon Feeding Programs.

LIVING PROOF

Be-Co-Lass is an important part of the feeding program for many of the highest producing herds in the East. Pictured here are cows typical of many which are raised at Beacon's Dairy Research Farm at Cayuga, N. Y. One requirement here is significant conditions must be capable of being duplicated under commercial dairy herd operations. Beacon Feeds are Beacon-trolled... proved under practical conditions.



BEACON FEEDS

ARE UNIFORMLY BETTER BECAUSE THEY'RE BEACON-TROLLED

*Beacon Dealers are located from Maine to the Virginias
THE BEACON MILLING COMPANY
CAYUGA, N. Y. • YORK, PA. • LAUREL, DEL. • EASTPORT, N. Y.
BEACON-SHOWALTER FEEDS, BROADWAY, VA.