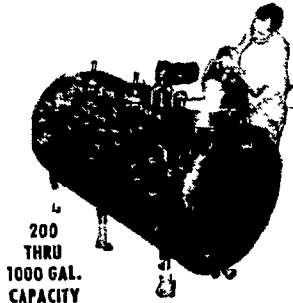


Argentine Wheat Acreage May Be Down

The wheat acreage now being seeded in Argentina may be about 10 per cent below the 15 million acres seeded to wheat in that country in 1956, according to the Foreign Agricultural Service.

To meet the needs of increasing cattle numbers in Argentina it is expected that some wheat growers will shift to corn and sunflower production.

PLAN FOR THE FUTURE
INSTALL A
Mojonnier
ALL STAINLESS STEEL
VACUUM BULK COOLER
PIONEER BUILDERS OF DAIRY EQUIPMENT



200
THRU
1000 GAL.
CAPACITY
The same POUR-IN COOLER today
is your highly-efficient pipeline
cooler tomorrow.

See Us Now
Lanc. Co. Farm Bureau
Lancaster, Pa.

AUTHORIZED MOJONNIER DEALER



WINNER OF A REGISTERED HAMP-SHIRE gilt at the Swine Producers Field day as top swine judge was J. Robert Book, 18, R2 Lancaster. Presenting the gilt to Book is A.B.C. Groff, owner of Stauffer Homestead Farm and field day host. Book,

a graduate of Lampeter-Strasburg High School, was on the 4-H swine team that was second in the state last year. In winning the gilt, he scored out over some 56 other contestants. (LF Photo)

First Swine Producers Field Day Draws Crowd of More Than 80

More than 80 Lancaster County Swine Producers and their families saw 18 year old Robert Book, R2 Lancaster, take top

honors as a swine judge at the producers field day Saturday at Stauffer Homestead Farms, R1, East Earl.

Other winners in the judging contests were: senior division, R. P. Maule, first; Chelster Eby, second; Eugene Hoover, third; Mrs. Anna Skiles, fourth; Kenneth Skiles, fifth; and Mrs. Doris McHenry, sixth.

Junior Division, J. Robert Book first; Constance Witter, second; Darwin Boyd third; Donald Welk, fourth, and William Maule, fifth.

Highlight of the day, other than the judging contests, was a demonstration of meat type determination by Dwight Younk-in, livestock specialist from Penn State.

Starting in the morning with a back fat probing demonstration he then showed how the loin eye is measured and how carcass length is determined.

"Split the loin between the tenth and eleventh rib to measure the loin eye," he told the farmers. "To measure the carcass, start at the tip of the hip bone and measure to the first rib."

For a true meat type hog, the carcass should measure 29 inches and the loin eye should have an area of 3.75 square inches.

Younk-in said that tracings of loin eyes can be sent to him for measurement by special instruments.

Also on the program was Frank Sherritt of the Penn State faculty who showed plans for the new swine building and experimental laboratories to be built at the University.

He also told the farmers that tests at Penn State tend to prove that most brood sows are fed too well during gestation.

In experiments run at the University using soybean silage as a carrying ration for brood sows, litter size and weight have shown an increase which, combined with lower feed costs for the roughage means greater economy in operation.

However he said that gilts that have not completed their growth need a heavier ration to carry them up to farrowing time than do the sows.

All the sows should be put on a flushing ration about two weeks to farrowing, he said.

Earl Fisher, manager of Stauffer Homestead Farms and chairman of the association bred gilt sale committee, gave a report on the sale progress.

He said that gilts will now be accepted for listing in the Feb. 22 sale on the following conditions.

Any cross bred or pure bred gilt bred to a registered boar after Nov 10 can be sold.

The gilt must be vaccinated for cholera by any accepted treat-

ment.

A blood test for brucellosis must be completed 60 days before the sale.

The gilts will be sold under the fair practices code now adopted by most of the breed associations.

A local auctioneer will cry the sale.

Standards Proposed For Christmas Trees

At the request of the National Christmas Tree Growers Assn. and several state associations, the U. S. Standards for Christmas trees have been developed and proposed by the USDA.

The proposed standards, as published in the July 27 issue of the Federal Register, provide for three grades of trees to be known as U S Premium, U. S. No. 1 or U. S. No 2 depending on the density, taper, balance, freshness and freedom from tree deformities.

Dead Animals Removed Promptly

Will Pay Full Value
For Dead Animals

Dealers in
Bones, Tallow
and Hides

FRY'S
RENDERING
WORKS

Prop., John Fry
2114 Hollinger RD.
Lancaster

Ph. EX 2-4815
Toll Charges Accepted

READY TO SERVE YOU WITH
Hoffman Seeds
FARM SEEDS

ALFALFA for Fall Seeding

Cert. DuPuits - Cert. Buffalo
Cert. Ranger - Cert. Atlantic
Cert. Vernal - Grimm Type

BALBO RYE for Pasture CERT. BARLEY, OATS, WHEAT

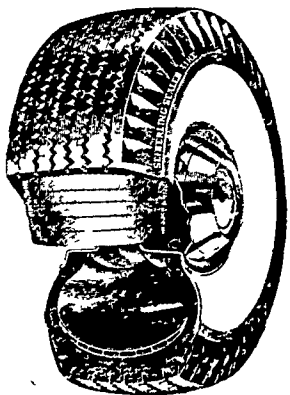
Contact Your Local Hoffman Agent
or Phone Landisville TW 8-3421

A. H. HOFFMAN SEEDS, Inc.,
Landisville, Pa.

H. M. KRADY

Distributor For

SEIBERLING SAFETY TIRES



Let Us Handle Your
Tire Problems

AUTO TRUCK

Tractor Tires
Recapping

WRITTEN GUARANTEE
ON ALL
SEIBERLING TIRES

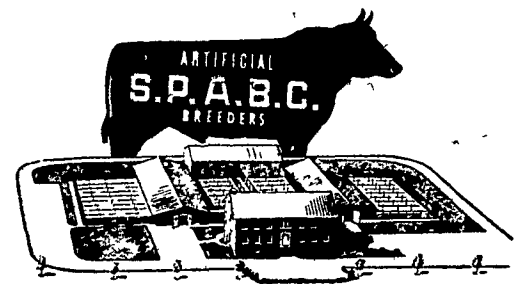
Phone EX 2-9507

608 N. Prince St.

Lancaster, Pa.

GREATER PRODUCTIVITY IS THE KEY TO PROGRESS

Through
Proven
Sires
The



assured top production complimented with good type to assure longevity. Breeding service is as near as your telephone and costs so little you'll be amazed. All this is possible through "Farmer Cooperation", the best "off-the-farm tool" to assist you gain higher profits.

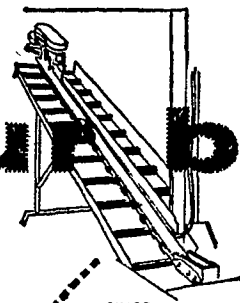
ALWAYS A CHOICE OF SIRES WITH S. P. A. B. C.

Southeastern Penna.

Artificial Breeding Cooperative

P. O. Box 254 Lancaster, Pa. Phone EXpress 2-2191

your barn



needs this



MODEL B-45

BARN CLEANER

- SAVES 300 to 600 hours of work annually.
- FLEXIBLE design fits any barn.
- SAVES power—has no-load starting.
- CUTS friction—has recessed corners.
- EFFICIENT—97% efficient gear box.
- LASTS longer with new Z-Metal chain.

BARN CLEANERS—SILO UNLOADERS—BARN EQUIPMENT

Stauffer Diesel Refrigeration

GORDONVILLE, RD1.

Ph. Intercourse SO 8-8531

