



AN OLD STONE WATERING TROUGH, chipped from sharlev limestone and used in Lancaster in about 1890, has recently been acquired by the Landis Valley Farm Museum. The Museum has also acquired a Post Office, formerly in the Livonia Inn in Centre County. It is to be installed in the country store now being reconstructed at the Museum. (LF Photo)

### Annual Black and White Show Today at SPABC, Lancaster

Fifty exhibitors will be showing about 125 head of registered Holsteins today in the Lancaster County Black and White Show at the Artificial Breeders Cooperative in Lancaster.

Clarence Lyons, 204 Hess Ave., Lancaster, general chairman for the show, said that judging will be by the Danish system and that winners of blue and red ribbons will qualify for participation in the state show to be held Sept. 20 in Harrisburg at the Farm Show Building.

Judge for the show will be

Cuthbert Nairne, Douglasville, Pa.

Classes to be judged include: junior bull calf, senior bull calf, junior yearling bull, senior yearling bull, junior heifer calf, senior heifer calf, junior yearling heifer, senior yearling heifer, two-year old heifer (never fresh), two-year old cow, three year old cow, four-year old cow, cow, five years and over, best udder, junior get of sire, senior herd and championship classes. Judging will begin at 9 a. m. today

### Source Unimportant For Phosphate

Results from applying superphosphate, rock phosphate and colloidal phosphate were found to be about the same when applied at the same rate off actual phosphate per acre in experiments conducted by the University of Missouri.

According to John Falloon, extension soils specialist, the six year average corn yield on plots getting superphosphate was 57 bushels an acre plots treated with rock phosphate made 59 bushels and colloidal phosphate treated plots, 58 bushels.

These differences in yield, Falloon says, are too small to attribute to the source of the phosphate. He further points out that because of this greater availability, superphosphate can be used at lower rates than rock phosphate but this, he says, requires additional applications more often.

This means there is a low investment at one time if superphosphate is used instead of rock phosphate, but more is spent for phosphate over a period of years.

### International Dairy Show in Chicago To Exhibit More Than 2,000 Head

CHICAGO — The continent's biggest dairy cattle exposition, the International Dairy Show, is being readied for its fifth annual edition Oct. 9 to 15 in Chicago's International Amphitheatre.

It will bring together the best purebred dairy cattle from this country and Canada, according to W. A. Wentworth, of Frankfort, Ky., president. The competition is the final one of the year, bringing top state fair winners together for this "World Series" of dairy cattle shows.

Entries are expected to top last year's 2,000 head of cattle. The National Jersey Show is slated again this year, and the Jersey breed will have its first National Jersey Junior Show at Chicago this year for boy and girl owners. The Guernsey breed will have its first National Futurity for 3-year-old cows at the Chicago exposition.

Cash prizes total nearly \$47,000 this year, the largest ever offered at the Chicago show.

Top entertainment will again be

the International "Golden Spurs" Rodeo, testing man against beast in dangerous and exciting competitions of the cowboy sport. It attracts the country's leading rodeo contestants, Rex Allen, popular cinema and TV star, will appear at all performances.


Other events will include the third annual National Conference for Dairy project winners from over 20 states, the International Collegiate and 4-H Dairy-Cattle Judging contests, and a Collegiate Dairy Products Judging contest. The International Quarter Horse Show and first annual International Quarter Horse Sale are slated for Oct. 16 and 17.

All Junior Show cattle in the six dairy breeds will be judged on opening day, Wednesday, Oct. 9. These entries are owned and shown by farm boys and girls. Holsteins, Jerseys and Brown Swiss in the open competition will have winners picked on Oct. 10 and 11, while Ayrshires, Guernseys and Milking Shorthorns will be judged on Oct. 14 and 15.

Turn your grain into

# BIG MILK PROFITS

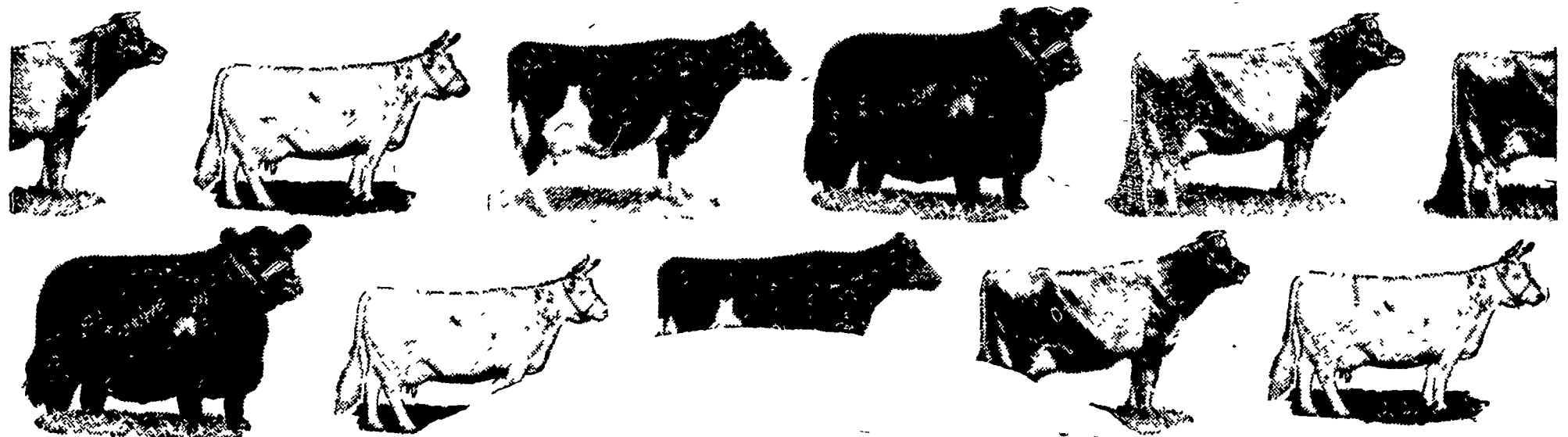
with Ful-O-Pep Dairy Concentrates



New, high-efficiency Ful-O-Pep Dairy Concentrates have the nutrients needed to balance out your grain . . . to produce a powerful milk-making feed at a low cost. It takes so little Ful-O-Pep . . . and no other ingredients are needed. Ful-O-Pep Concentrates really step-up the milk-making efficiency of your grains for bigger milk profits.

Stop in for more information

<p><b>J. C. Snavely &amp; Sons., Inc.</b> Landisville, Pa.</p> <p><b>Millport Roller Mills</b> Lititz, R.D.4, Pa.</p>	<p><b>Grubb Supply</b> Elizabethtown, Pa.</p> <p><b>J. C. Walker &amp; Son</b> Gap, Pa.</p> <p><b>D. W. Hoover</b> East Earl, R. D. 1, Pa.</p>	<p><b>George Rutt</b> Stevens R. D. 1, Pa.</p> <p><b>Paul M. Ressler &amp; Son</b> Paradise, Pa.</p>
---	--	--



*Good Cattle Need Good Crops  
and Good Crops Need Good Limestone*

## This Year USE MARTIN'S LIMESTONE

Let us spread your limestone.

Give us a call for quick delivery!

Ivan M. Martin, Inc., Blue Ball, Pa.

Telephones: New Holland ELgia 4-2112  
Terre Hill Hillcrest 5-3455