



THE FIRST STEP in preparing DHIA records for machine computation is punching the barn sheet data onto cards. The card is then checked by another operator. Operating this machine is Beverly Trukenmiller, R2 Bellefont.

### DHIA Record Machines Complex

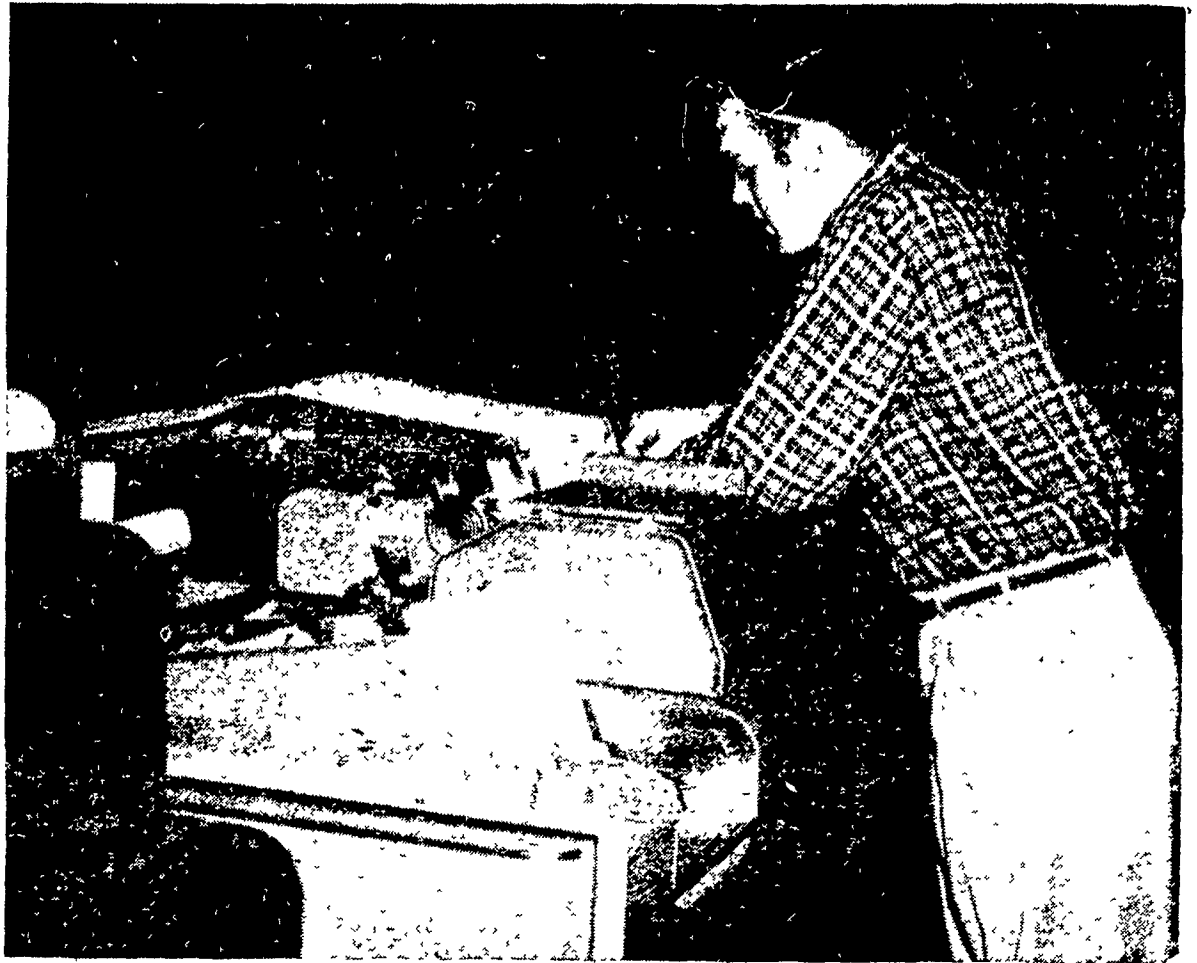
This picture story shows how the new DHIA machine record keeping system works.

The actual work is done in the tabulating division of the Penn State accounting department under the direction of William Dye.

The system is expected to be

speeded up about a third when a new magnetic drum data processing machine is installed this fall. This machine will eliminate about 30 steps in the present procedure.

Most of the time saved will be in key punching — the initial step. Now all the costs of produc-



THE FINAL STAGE IN MACHINE record keeping is printing the records so that they may be read easily. This accounting machine prints at the rate of 150

lines a minute. Four copies of each record are made. Operating the machine is Steve Loy of State College.

tion have to be punched onto each card. Under the new system, with the new machine, only one card will have to be punched with the cost of production.

The machine has the capacity to "remember", on the magnetic drum, up to 20,000 items.

All DHIA data is processed as it comes into the accounting office. This gives a continuous flow to the work and adds to the efficiency of the system.

### Alfalfa Fattens Steers Cheaply

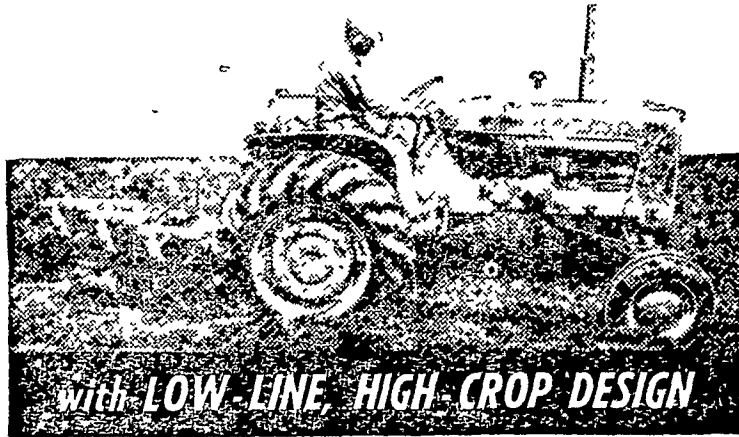
Feeding tests conducted by the Kansas Experiment Station show the value of alfalfa as a fattening ration for yearling steers.

During the tests, one lot of steers was fed 39.25 pounds of sorgo silage, 14.29 pounds of grain sorghum, 1.5 pounds of cottonseed meal, and three pounds of alfalfa.



HEART OF THE MACHINE record keeping system is the calculator. Here Lee Harper, assistant manager of the tabulating division of the Penn State accounting department feeds cards into the machine. On the cards is all the information that is required for computation. At a rate of 100 a minute, the answers are computed and punched into the card.

## DYNAMIC NEW D-14!



### Exclusive POWER DIRECTOR

- 8 speeds ahead
- Quick-shift to high or low range
- Constant speed live PTO
- Continuous operating hydraulic pump

All New

### POWER-CRATER Engine — Full 3-Plow Power Range Selector for TRACTION BOOSTER system

Center-ride seat, Roll-shift front axle, all-enclosed hydraulic system, Low-line for step-a-board convenience, High clearance to lay by crops.

Plus

The original Power-Shift rear wheels SNAP-COUPLER hitch

Choice of front-end styles, power steering if you want it.

POWER CRATER, TRACTION BOOSTER and SNAP COUPLER are Allis-Chalmers trademarks

**ALLIS-CHALMERS**



SALES & SERVICE

**N. C. Myers & Son**  
Rheems, Pa.

**L. H. Brubaker**  
Lititz, Pa.

**Mann & Grumelli Farm Serv.**  
Quarryville, Pa.

**Snavelys Farm Service**  
New Holland, Pa.

**R. S. Weaver**  
Stevens, Pa.

**L. H. Brubaker**  
Lancaster, Pa.

**Nissley Farm Service**  
Washington Boro, Pa.

## WHEN PASTURE FAILS...

Feed



*Eshelman*  
**S-O-S**

(Sack-of-Silage)

S-O-S replaces hay, ensilage, or pasture. It is succulent, palatable and bulky; absorbs water readily—and contains more digestible nutrients than wheat feeds. It can be mixed with home grains, too.

Try S-O-S. You'll find it to be a profitable investment!

### MOUNTVILLE FEED SERVICE

R. D. 2, Columbia, Pa.

### LEROY GEIB, EST.

R. D. 2, Manheim, Pa.

### JOSEPH M. GOOD & SON

R. D. 1, Bird-in-Hand, Pa.

### JOHN H. BONHOLTZER

R. D. 4, Lancaster, Pa.

### SNADER'S MILL

R. D. 1, Stevens, Pa.

### I. B. GRAYBILL & SON

Refton, Pa.

### WALTER & JACKSON, INC.

Christiana, Pa.