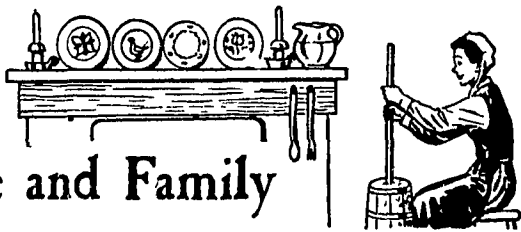


For the Farm Wife and Family



'Precooked' Fudge Mix Assures Perfect Candy with Little Work

Have you discovered wonderful quick fudge mix for making candies? If not, you've a treat in store. Regular users know how easy quick fudge mix is to use — all the work is taken out of fudge making. Quick fudge mix is pre-cooked for you by the manufacturer. So, you make a perfect batch of smooth, creamy fudge — without testing or beating. Just heat with butter and water for four minutes.

Try one of the three flavors of quick fudge mix today — popular

chocolate, rich brown sugar penuche, or luscious coconut. Follow the suggestions on the package for making many delightful candy variations. You'll be an expert fudge maker the first time you use quick fudge mix.

Don't limit your candy making to plain fudge. Try your hand at other variations — add fruits, nuts, coconut and other ingredients to fudge — make attractive bon bons from any of the three flavors of quick fudge mix — shape into luscious nut and fruit filled rolls — use fudge for filling dates — make nut, raisin or coconut clusters.

Candy making is fun — start now and in no time you'll have the skill of a professional candy maker. Not only will your family enjoy these luscious candies — it will bring premium prices at fall bazaars and candy sales, and will be perfect for holiday gift boxes.

Here are directions for making the elegant fudge variations shown.

FRUIT AND NUT VARIATIONS

Use chocolate, coconut or penuche quick fudge mix. Make fudge as directed on the package. Before pouring, add one of the following ingredients, depending on the flavor.

To chocolate fudge add:
 3/4 cup chopped black walnuts
 1/2 cup chopped dates and 1/2



cup nutmeats. USING BASIC CHOCOLATE, penuche or coconut quick fudge mix, you can vary the candy you make by rolling it into balls for fudge bon bons. The balls are then rolled

in coconut, cry cocoa, chopped nuts, sprinkles or colored sugar to add the particular color or taste that your family likes best.

THE NEW

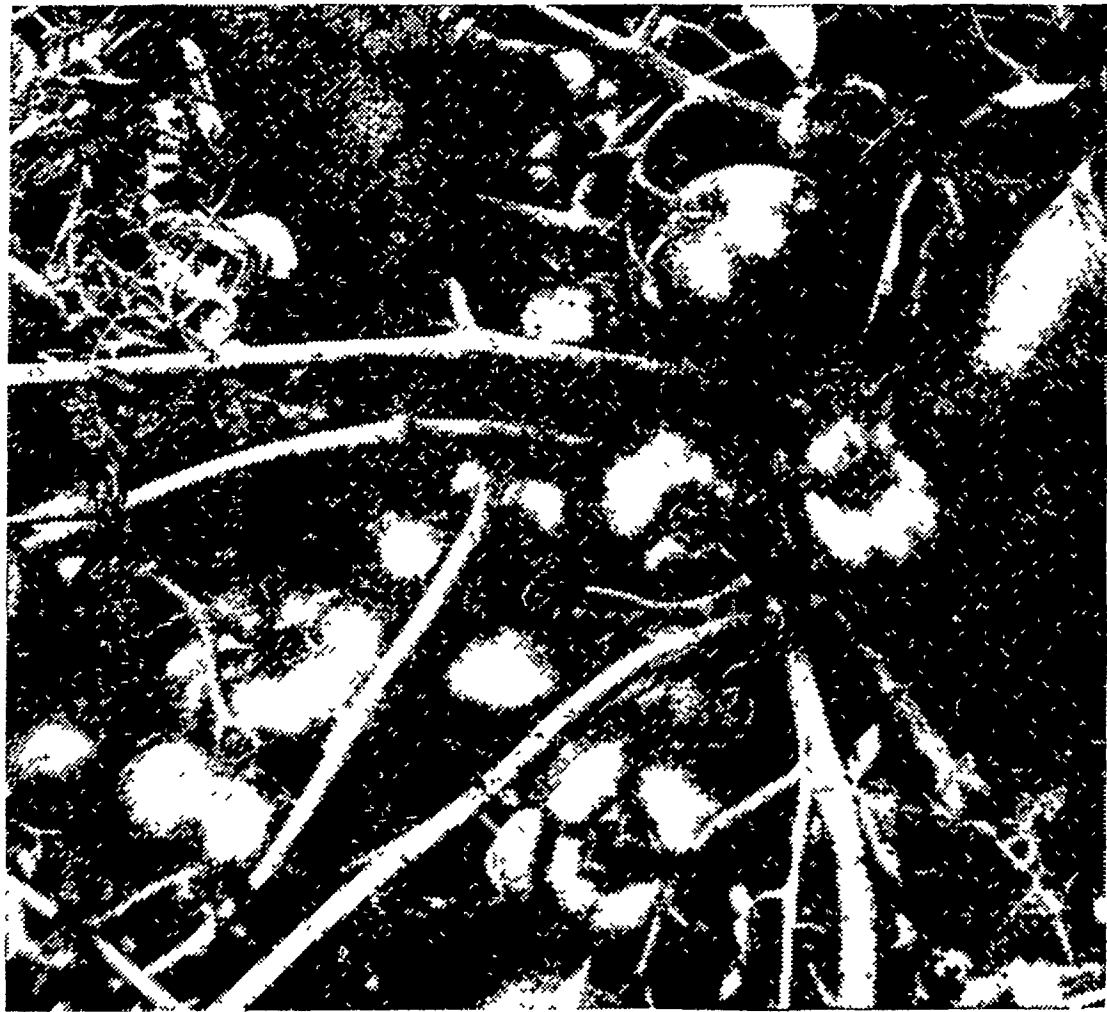


QUEENS

Available in July

Johnson's Hatchery

Ephrata, Pa. RE-3-2980



How many tomatoes can a vine hold? ... use **DITHANE M-22**

After using DITHANE M-22 (maneb) for disease control, a lot of growers remark how the vines look so crowded with big, choice tomatoes. No one has yet counted the exact number per acre, but experiment stations have measured up to 15% higher yield with DITHANE M-22 than with other types of fung-

icides. DITHANE M-22 results in maximum yields because it gives maximum protection from anthracnose, early blight and late blight, gray leaf spot and Septoria leaf spot. With this manganese-containing fungicide, vines also develop a greener and more luxuriant foliage. Use DITHANE M-22 and see.

RHOTHANE FOR INSECTS

For better tomato insect control, use RHOTHANE with DITHANE. RHOTHANE checks fruitworms, hornworms, pinworms, flea beetles, psyllids, and thrips.

RHOTHANE and DITHANE are trademarks, Reg. U. S. Pat. Off. and in principal foreign countries.



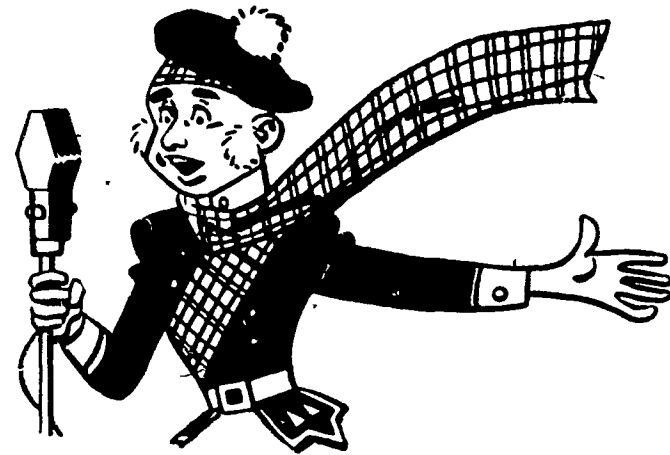
Chemicals for Agriculture
ROHM & HAAS COMPANY

WASHINGTON SQUARE, PHILADELPHIA 5, PA.

Representatives in principal foreign countries

| | |
|------------------------------------------------|-----------------------------------|
| 1/2 cup raisins | 3/4 cup chopped almonds |
| To penuche fudge add: | To coconut fudge add: |
| 1/4 cup raisins and 1/4 cup nutmeats | 1/4 cup chopped candied fruit mix |
| 1/4 cup chopped dates and 1/4 cup chopped figs | 3 tablespoons chopped candied |

(Continued on page 7)



GOOD NEWS FOR OUR THRIFTY SAVERS

June 29th we will again make our semi-annual earnings payment to savings customers. In most cases, these earnings will be automatically added to the insured savings accounts, and the money in turn will start to accumulate additional earnings. If you would like to share in our next payment, December 31st, we invite you to open an account now.

Current Dividend **3%** per Annum.

Paid On Savings
 Accounts Insured to \$10,000

FIRST FEDERAL
Savings and Loan
 ASSOCIATION OF LANCASTER



25 North Duke St.

Phone EX 7-5898



Gilbert H. Hartley, Treasurer
 Emlen H. Zellers, Secretary