

Farm Women's Society News



TEN MONTH OLD Kathie Jean Winters, daughter of Mr. and Mrs. Paul Winters of R1 Holtwood, led off Farm Women 15's fashion show May 2 at Middle Octorara School. Kathie, who modeled a blue organdy dress, has been walking for about three weeks (Sun-Ledger Photo)

Farm Women 10 Hear Experiences of Missionaries

Mrs. Francis Scott compared her life today as a mother with that of her own mother who was a missionary in China and that of her mother in law who was a missionary in Korea at a meeting of Farm Women 10 Saturday.

She also told of her experiences in China before she and her family had to flee over the "hump" by way of the Burma Road 10 years ago.

Mrs. Scott also showed some beautiful Chinese art work and children's hand work.

The Society met at the home of Mrs. Harry Shuman, 1431 Eden Rd., Lancaster. Miss Getha Shuman assisted her mother as hostess and Mrs. Robert Metzler, a sister of Mrs. Shuman, was a guest. She offered a special prayer for Mother's Day.

Devotions were led by Mrs. Harry Sloat. Roll call was answered by naming an outstanding mother.

Social hour and sale of hand made articles followed the meeting.

The next meeting of the Society will be at the home of Mrs. H. Landis Shank on June 1. Mrs. Clifford Shoemaker will be co-hostess.

Farm Women 19 Fete Daughters At Tea Saturday

Members of Farm Women Society #19 entertained their daughters at a tea Saturday afternoon, May 4. Sally and Gerry Bagnoli, Landisville, entertained with marimba selections.

Mrs. Elam Enoch, Terre Hill, showed her collection of hand-made portrait dolls of "First Ladies of Our Land."

The social committee in charge was: Mrs. Harold Saylor, chr., East Petersburg; Mrs. Henry Lehman, Manheim R1; Mrs. Lloyd Hollinger, East Petersburg; Mrs. Lester Hollinger, East Petersburg.

Pansy plants were given favors June 1, the Society will be entertained in the home of Mrs. Lester Hollinger with Mrs. Henry E. Martin as co-hostess, Mrs. Samuel Dum, East Petersburg will review a book.

Staking Peonies Stops Heavy Rain Crushing

Be sure to stake peonies to prevent them from being crushed down by heavy spring rains, advises Assistant County Agent Victor Plastow. Remove side buds from peonies if large blooms are desired.

Farm Women 17 See Expert Make Salad

Farm Women '17 met at the home of Cleta Rineer on May 2.

Sixteen members were present and Ruth Graves was a visitor.

The meeting opened with the singing of Home Sweet Home. Psalm 100 was read and the Lord's Prayer said at devotions.

Roll call was answered by telling what each member had planted in her garden.

Mrs. Gabois of P.P.&L. gave a demonstration on salad preparation.

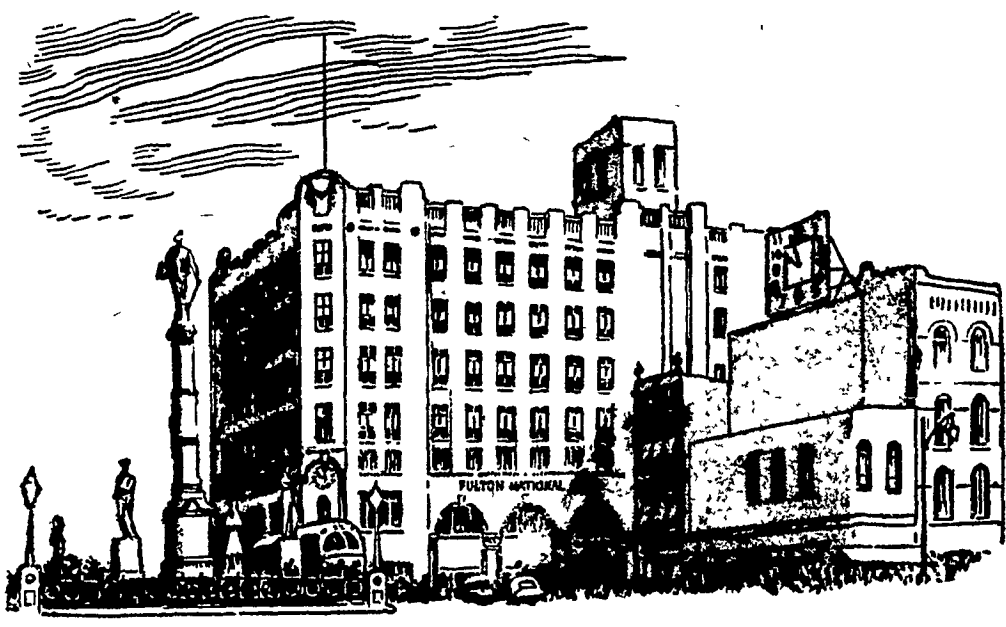
In the business session, the Society decided to send cookies to Valley Forge Veteran's Hospital.

Refreshments were served by Elsie Marron and Pauline Stoner.

The next meeting will be at Drumore School on June 6. Society 18 will be entertained at that meeting.

New Type Hedge, Dwarf Corkbush, Now Available

A new type of hedge called Dwarf Corkbush (*Euonymus alatus compacta*) is becoming very popular, says Assistant County Agent Victor Plastow. It can be planted in small sizes, 12 to 15 inches or taller of course, and the planting distance is two or more feet apart, either as a single or double row. Many nurserymen have the small size plants available.



For Convenience, For Confidence

For banking at its best, for quick friendly service . . . use The Fulton National Bank. Its sound financial policies and progressive management are specifically designed to give to you . . . the customer . . . a means, whereby your banking transactions can be accomplished with a minimum of effort and a maximum of security. Inquire about the many services your Fulton has to offer, because they are for you. Five conveniently located offices are anxious to serve you. No Matter What The Need.



FRIGIDAIRE

Sales & Service
New & Used Appliances

Brubaker Plumbing & Heating

Old Harrisburg Pike &
Rohrerstown Rd.
Ph. Lanc. EX 3-3908

Fertilize Trees For Good Shade, Proper Growth

Fertilizing shade trees and flowering trees is important, says Assistant County Agent Victor Plastow. This fertilizer practice can best be done by making a series of holes, 15 to 18 inches deep in concentric circles extending from the outer branches of the tree, inward 1/3 to 1/2 the distance toward the trunk, depending upon the size of the tree to be fed. A copy of the mimeograph "Fertilizing Shade Trees" can be obtained from the County Agent.



Special Buy on

Nationally Advertised
Sectional Living
Room Furniture

International and Many Other Brands

4500 SQUARE FEET OF
NATIONALLY ADVERTISED
FURNITURE ON DISPLAY

Store Hours:

Mon., Tues., Wed. — 9 A.M. to 6 P.M.
Thurs., Fri., Sat. — 9 A.M. to 9 P.M.

DELIVERY AVAILABLE — EASY TERMS
FREE PARKING

NOW . . . 2 STORES TO SERVE —
YOU BETTER

MARTINDALE
FURNITURE STORE
PH. HILLCREST 5-2932

INTERCOURSE
BRANCH
PH. S08-3752

"The Cash Discount Stores"