

Having a Place for Everything Makes for Safer Home Living

Spring-cleaning time presents a real opportunity for the rural homemaker to make her home a safer, happier place to live. One way to help obtain this objective is to endeavor to have a place for everything.

Spring cleaning, naturally, requires routine scrubbing and cleaning, but a little extra effort will pay dividends in neatness and safety.

This is the time to check the

home's storage facilities to see if there is adequate storage and if the present storage facilities are being put to the best use. This is simply a matter of having a place for everything and of having everything in its place.

Here are some suggestions for checking the storage space in the home. A good storage plan provides space appropriate to the size of the home and the size of the family. It should be designed for convenience and safety.

Check your home. Does it provide space for playthings, tools, porch furniture, awning, screens, storm windows, cleaning compounds, poisons, card tables, hobby equipment, brooms, mops, vacuum cleaners, ladders and stepstools, china and kitchen utensils.

How does storage fit into the safety picture? Falls are the leading source of injuries. By putting things away, the homemaker can eliminate cluttered floors and stairways—a major cause of falls.

DE-STROY
the **PROVEN** Rat Killer
with **WARFARIN**

If Kids are - Just 1 Year Old!

\$1
NOW ONLY **1** per lb.
MONEY-BACK GUARANTEE

Mouse Size - 3 lbs. Size \$2.75

See Your
Local Dealer
Distributed By
NEW HOLLAND SUPPLY CO.
New Holland, Pa.

LANCASTER FARMING
Classifieds Ads Pay
ST 6-2132

| State | Districts Included 1/ | Total State Production | Value Per bushel | Value of production | Loss of crop 1955 | Loss of crop 1956 |
|---------------|-----------------------|------------------------|------------------|---------------------|-------------------|-------------------|
| Connecticut | 2 | 196 | 1.65 | 323 | 2 | 33 |
| Delaware | 1 | 9,360 | 1.29 | 12,074 | 688 | 849 |
| Illinois | 9 | 582,488 | 1.23 | 716,635 | 28,517 | 35,076 |
| Indiana | 6 | 287,680 | 1.22 | 350,970 | 5,628 | 6,866 |
| Iowa | 12 | 486,778 | 1.20 | 584,134 | 36,940 | 44,328 |
| Kansas | 3 | 22,525 | 1.36 | 30,634 | 319 | 434 |
| Maryland | 1 | 26,220 | 1.26 | 33,037 | 751 | 946 |
| Massachusetts | 1 | 141 | 1.65 | 233 | 1 | 2 |
| Michigan | 4 | 86,892 | 1.21 | 105,139 | 529 | 640 |
| Minnesota | 6 | 294,548 | 1.10 | 324,003 | 6,080 | 6,688 |
| Missouri | 4 | 179,952 | 1.24 | 223,140 | 4,993 | 6,191 |
| Nebraska | 4 | 94,870 | 1.31 | 124,280 | 3,397 | 4,450 |
| New Jersey | 1 | 9,088 | 1.34 | 12,176 | 1,051 | 1,408 |
| New York | 12 | 12,243 | 1.38 | 16,895 | 12 | 17 |
| North Dakota | 5 | 12,220 | 1.03 | 12,587 | 133 | 17 |
| Ohio | 5 | 204,900 | 1.26 | 278,664 | 2,237 | 2,844 |
| Pennsylvania | 9 | 56,112 | 1.41 | 79,118 | 3,397 | 4,663 |
| South Dakota | 6 | 93,751 | 1.12 | 105,001 | 1,985 | 2,223 |
| Vermont | 1 | 45 | 1.65 | 74 | Trace | 1 |
| Virginia | 2 | 35,232 | 1.31 | 33,054 | 549 | 719 |
| West Virginia | 4 | 7,500 | 1.48 | 11,174 | 87 | 129 |
| Wisconsin | 8 | 111,410 | 1.19 | 132,578 | 744 | 921 |

Corn Borer Cost \$119.5 million Last Season

When the nation's grain corn producers picked up the tab for meals of the European corn borer last year, they were again reminded of the pest's huge and costly appetite. This hungry dinner guest cost them about \$119.5 million — based on the loss of almost 98 million bushels of corn grown for grain, the U. S. Department of Agriculture reports.

Losses to the borer in 1956 were high — about three per cent of the total crop — but well under the 155 million bushels destroyed by the pest in 1955. Last year's losses in bushels were the third highest since the all-time high of 314 million bushels in 1949.

Iowa, Illinois, and Indiana stood one-two-three in order of losses suffered because of destruc-

tion by the corn borer in 1956. Loss estimate for Pennsylvania is \$4,663,000.

Federal-State surveys made last fall point to fewer European corn borers in U. S. corn fields in 1957 than last year, but still in large enough numbers to pose a real threat. The North Central States showed reduced numbers of this costly corn insect, while increased numbers showed up in Eastern States.

It's hard to calculate what corn borers cost the nation each year. They don't just cut the yield of crops. They also lower the quality, increase production and harvesting costs, and require large outlays for control materials and equipment. Untold man-hours are used to check their ravages.

The European corn borer is an immigrant insect that has made its home in the United States for more than 40 years. It has been one of the farmers' worst enemies since it attacks one of the most important crops.

Americans used 39.3 billion board feet of lumber last year — enough to build a 30-foot boardwalk from the earth to the moon should space travel become practical for pedestrians. Softwood consumption accounted for more than 80 per cent of this total. The 1956 consumption figure was seven per cent below 1955 but two per cent above 1954, three per cent above 1953 and about the same as in 1952.

Go from Chick to Check in Record Time

Martin's
Vantress - Pickens
Chicks

The Best Broiler Cross at its Best

Martin fuses the work of the nation's leading breeders to give you top quality chicks that mature early for quick broiler profits.

PLACE YOUR ORDER NOW
MARTIN'S HATCHERY
POULTRY FARMS, INC.
Lancaster, Pa. Phone EK 2-2164

Finer Feeds

by

FARM BUREAU

Manufactured in Our NEW

Farmer - Owned

MODERN MILLING PLANT

AT NEW HOLLAND

- ★ 22% Layer w/3-Nitro
- ★ 16% All Mash Layer
- ★ 32% Milk Maker
- ★ 14% Dairy Feed
- ★ Fitting Feed
- ★ 32% Steer Supplement
- ★ Beef Supplement "A"

Prompt Delivery in Bags or Bulk

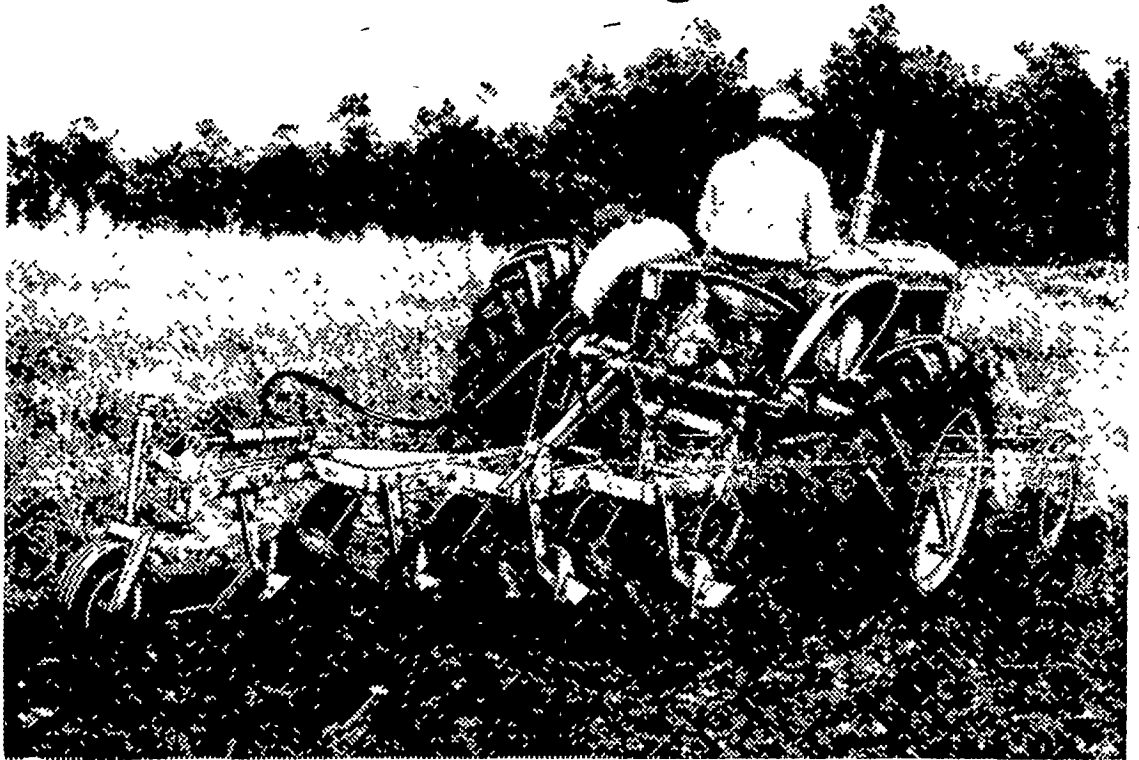


Lancaster County Farm Bureau

Cooperative Association

Lancaster — Manheim — New Holland — Quarryville

Now, Big-Capacity AUTOMATIC TRACTION BOOSTER Farming



Automatic Traction Booster turns Big-Capacity Implement weight into working weight, so that the WD-45 has traction equal to a tractor weighing up to 5,000 lbs. on the drive wheels.

Implement weight becomes a rolling load carried on the tractor rear wheels for extra traction when needed.

Automatic Traction Booster with Transport Valve is the greatest tractor engineering advancement since Allis-Chalmers added 25 percent to the work capacity of farm tractors with air tires. You have to see BIG-CAPACITY AUTOMATIC TRACTION BOOSTER FARMING to believe it.

Your choice of fuels, too,
Gasoline, L-P Gas, Diesel.

SEE THIS NEW
ALLIS-CHALMERS ENGINEERING
IN ACTION

ALLIS-CHALMERS

SALES AND SERVICE



L. H. Brubaker
Lancaster, Pa.

Snavelys Farm Service
New Holland, Pa.

V. G. Myers & Son
Rheems, Pa.

L. H. Brubaker
Lititz, Pa.

Mann & Grumelli Farm Serv.
Quarryville, Pa.

R. S. Weaver
Stevens, Pa.