

Broiler Price Drops to 19.85 Cents At Lancaster Exchange Wednesday

LANCASTER, April 10—The broiler price average took a drop today to 19.85 cents with the price range being between 18 and 20½ cents.

Sixteen lots, 60,150 birds, were sold

In addition to the broilers, two lots of heavy fowl sold at 20¼ and 20½ cents, three lots of 5,400 capettes sold for 22, 23 and 23½ cents, and one lot of 1,100 capettes sold for 28 cents.

LANCASTER — Broiler prices

dropped to an average of 20.07 cents at the Lancaster Poultry Exchange Friday. Twenty-six lots, 114,674 broilers were sold. The price range was from 19¼ to 21½ cents.

Four lots, 5,600, capettes sold at prices ranging from 28¼ cents to 29½ cents; a lot of 400 Leghorn fowl sold at 13½ cents; two lots of heavy fowl sold at 20¼ and 21¼ cents; and a lot of light capettes sold for 24¼ cents.

Last year 104,825 broilers sold for an average price of 20.81 cents and in 1955 the average for

Wednesday Chicago Grain Markets

May futures		
	Wednesday:	week ago:
Corn	\$1.28½	\$1.28½
Wheat	\$2.24¼	\$2.24¼
Oats	\$.71¼	\$.70%
Soybeans	\$2.42	\$2.43½

The Wednesday grain futures market was marked by heavy drops in most grains. However observers said that the drop was normal as the market adjusted itself from higher prices earlier in the week.

130,800 broilers was 31 cents.

Here is the Friday, April 5, sale listed by lot number; seller with grower in parentheses; amount and breed; age in weeks and days; buyer and price.

1. Samuel Kolb, 4,500 White Vantress, 9-4, H. W. Longacre, Inc., 20 cents. 2. Samuel Kolb, 7,000 White Vantress, 9-4, H. W. Longacre, Inc., 20 cents. 3. Samuel Kolb, 7,000 White Vantress, 9-4, H. W. Longacre Inc., 20¼ cents. 4. L. J. Denlinger Co. (Jason M. Eby), 3,200 Indian Rivers, 10, C. F. Manbeck Inc., 20¼ cents. 5. Daniel G. Forry, 4,000 White Vantress, 10, Ray W. Gible, 21½ cents.

6. Daniel G. Forry, 4,125 White Vantress, 10, Mandata Poultry 20¼ cents. 7. Daniel G. Forry, 3,900 White Vantress, 10, College Hill Poultry, 20½ cents. 8. Levi M. Weaver, 4,100 White Vantress, 10-2, Victor F. Weaver Inc., 20 cents. 9. Levi M. Weaver, 2,200 White Vantress, 10-2, Walter C. Mellinger, 20½ cents. 9. Glenn H. Herr (H. Raymond Charles), 6,100 White Vantress, 9-3, H. W. Longacre Inc., 20¼ cents. 10. Miller & Bushong (Richard Thompson), 7,375 Indian Rivers, 10, College Hill Poultry, 19¼ cents.

11. Miller & Bushong, (Rich-

Lancaster Markets: Steer Receipts Up 45 Per Cent; Hog Receipts Steady

By Edwin M. Hulin
USDA Market News Service
WEDNESDAY TO

WEDNESDAY REVIEW
LANCASTER — April 10, CATTLE: 4,500 week ago 3,100. Receipts around 45 per cent larger than previous week with slaughter steers accounting for most of the increase such kinds making up about 45 per cent of receipts. Heifers continued very scarce.

Stockers and feeders comprised about 40 per cent of supply, cows less than 10 per cent. Quality of slaughter steers rather attractive with liberal showing of average to high choice kinds. Trading on slaughter steers and heifers fairly active early in week, action slowed somewhat on Wednesday. Compared with last Wednesday, slaughter steers and heifers strong to 50 cents higher with most advance on steers grading choice and better Cows and bulls fully steady. Stockers and feeders strong to 50 cents higher. Two loads prime 1,157 lb. and 1,300 lb.

ard Thompson), 7,375 Indian Rivers, 10, College Hill Poultry, 19¼ cents. 12. Miller & Bushong, (C. Roy Bixler), 1,450 White Vantress, 10-3, Meader's Poultry, 20 cents. 13. Miller & Bushong (John L. Herr), 4,500 White Vantress, 9-3, Victor F. Weaver Inc., 20 cents. 14. Miller & Bushong (Frederick Sherrick), 2,000 White Vantress, 9-1, Meader's Poultry, 19¼ cents. 15. Richard M. Moyer, 2,000 White Rock capettes, 12-4, no sale, 25¼ bid.

16. D. E. Horn & Co. (Paul Newcomer), 5,750 White Vantress, 9, no sale, 20 cents bid. 17. D. E. Horn & Co. (Paul New-

(Continued on page 3)

fed steers \$26. Few other loads prime 1,102-1,325 lbs. \$25-25.75.

Numerous loads average choice to low prime \$23.50-24.50, most good and choice fed steers \$20-23, standard \$18-19.50. Scattering standard and good heifers \$16-19.50, small lot prime 1,023 lbs. \$23.15. Utility and commercial cows \$13.50-15.50, canners and cutters \$10.50-14, high yielding cutters \$14.25.

Utility and commercial bulls. \$16-18.50, few good fed yearling bulls \$18.50-19.50, cutters down to \$15. Good and choice stocker and feeder steers \$20-22, couple loads good and choice 1,000-1,100 lbs. freshly feeder steer \$22-22.50. Good and choice 415 lb. stock steer calves \$23.

CALVES: 950 week ago 925. Active, fully steady. Bulk good and choice vealers \$23-29, high choice and prime \$30-31, utility and standard \$15-22, culls down to \$10.

HOGS: 1,940 week ago 1,750. Bulk of supply U.S. 2 and 3, 190-240 lb. barrows and gilts. Compared with last Wednesday, barrows and gilts 25-50 cents higher, sows steady. Mixed U.S. 1-3, 190-230 lb. barrows and gilts \$19-19.50, largely \$19.25-19.50. Few No. 1 and 2, \$19.75-20 to small butchers. U.S. 2 and 3, 230-270 lbs. \$18-19. Few mixed weight and grade 160-180 lbs. \$17.50-19. U.S. 1-3, 270-550 lb. sows \$13.50-16.

SHEEP: 375 week ago 230. Bulk of supply spring lambs. Compared with last Wednesday slaughter lambs steady to strong. Good and choice 40-80 lb. spring lambs \$28-30, few \$31. Few utility and good wooied slaughter lambs \$20-22.

ALTMAN'S SUPER-A FEEDS

are timed-tested, scientifically balanced, vitamin complete and are manufactured daily in three modern plants. Compare our prices

100 Warren Red Chicks For Egg Production \$16.50.

B. Starter	\$ 4.15	20% Hog Feed	4.45
B. Grower Crumbles	4.35	Hog Concentrate Meal	5.10
Blue Bird All Mash	3.85	Soybean Meal	3.95
20% Production Mash	4.10	Potatoes	4.55
Scratch D. P.	3.85	Stay Dry (Bale)	2.40
Fine Chick Feed	4.85	Peat Moss (Bale)	4.20
Enriched Fitting Ration	3.55	Rabbit Pellets	4.80
15% Hog Feed	3.65	16% Dairy	3.40

Special Chop For Hogs! Steers! Sheep! & Goats!!
Don't forget we have Cattle and Poultry wire
Carbola Insecticides for your Shrubbery and Garden!

ALTMAN'S CASH FEED STORE

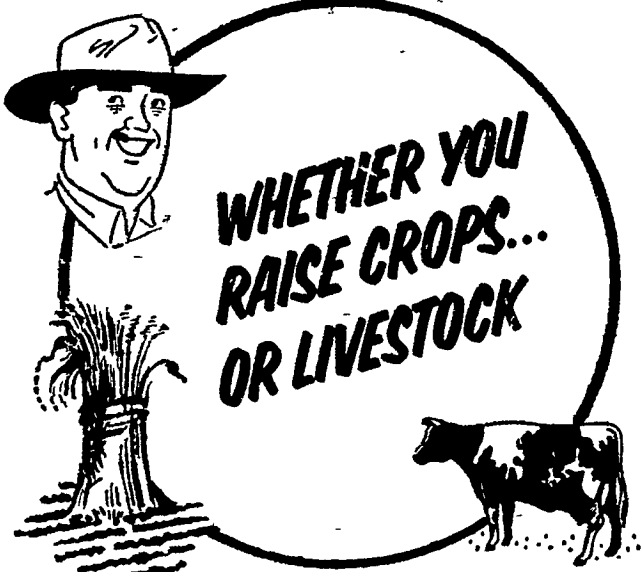
WILLIS H. WEAVER MANAGER

947 Harrisburg Ave. Phone Lanc. EX 4-7715

10c per hundred discount on half ton lots or more.

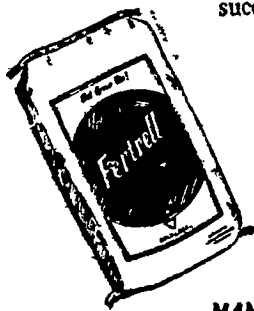
PRICES SUBJECT TO CHANGE

WE DELIVER



STEP UP YOUR PRODUCTION WITH FAMOUS Fertrell!

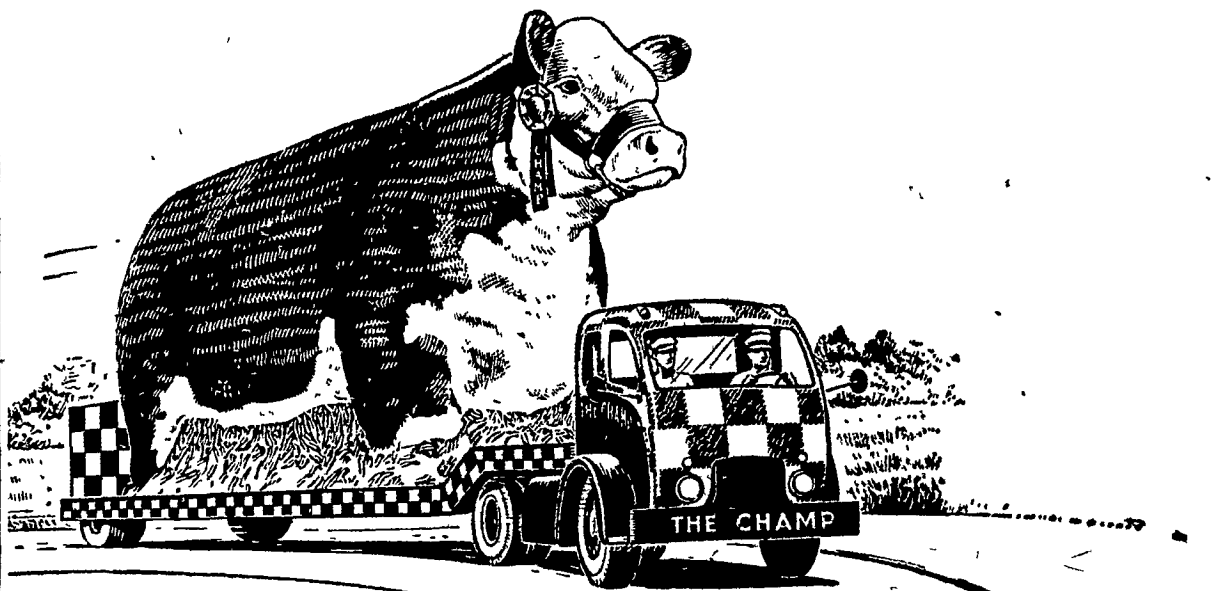
FERTRELL is the best investment for your soil. It builds richer soil. It builds up humus that helps to retain moisture thereby preventing undue damage during dry spells. It is natural — not a chemical stimulant — which means it stays in the soil and has a lasting effect. FERTRELL contains all major and trace elements needed for flourishing crops and pastures, including the very important — Molybdenum. Follow the lead of thousands of wise, successful farmers. Use FERTRELL. Order your supply TODAY!



MANUFACTURED BY
The ORGANIC DEVELOPMENT Co.
Fullerton, Maryland

DISTRIBUTOR
Samuel S. Sweigart
Rt. #2
Elverson, Pa.

PURINA THE CHAMP



See THE CHAMP at the

GUERNSEY BARN MAY 9 — 8 P. M. D. S. T.

LANC. STOCK YARDS MAY 13 — ALL DAY

Sponsored by your local Purina Dealers

J. FRED WHITESIDE
Kirkwood

JAMES HIGH
Gordonville

JOHN J. HESS II
Intercourse — New Providence

JOHN B. KURTZ
Ephrata

SNADER'S MILL
Mt. Airy

JOHN J. HESS
Kinzers — Vintage

WENGER BROS.
Rheems

WARREN SICKMAN
Pequea

S. H. HIESTAND
Salunga

B. F. ADAMS
Bird-in-Hand

