

## Seed Board Urges Research In Report

Improvement of seed production and harvesting equipment, study of the basic physiology of vegetable seeds, and research on factors and practices affecting seed quality were among the high-priority needs cited by the U. S. Department of Agriculture's Seed Research and Marketing Advisory Committee at its annual meeting, held this year at the University of California, Davis, Calif., March 4-7.

The committee is composed of persons outside USDA, selected to review Department research on seeds and to advise the Secretary of Agriculture on needs in this field. The group called for a broad program of research on seed production and marketing.

Among high-priority research needs cited by the Committee were:

**PRODUCTION:** Expand studies on seed-production equipment for vegetables, legume, and grass seeds. Increase research on the influence of light, temperature, and other factors on seed germination and seed development. Widen the search for varieties of legumes, grasses, and vegetables with resistance to insects affecting seed production.

**MARKETING:** Expand research to obtain information on factors responsible for changes in seed dormancy, hardseededness, seedling vigor, and loss of seed viability in storage. Increase efforts to develop more rapid, accurate, and objective methods and equipment for seed testing. Intiate studies to adapt new developments in research to prevent insect infestations in stored grains.

**UTILIZATION:** Expand research to develop and improved uses of honey as one of the most promising ways of assuring a prosperous beekeeping industry, which is essential for seed-crop pollination.

The group is submitting a detailed report of its recommendations to USDA. Copies may be obtained in a few weeks from the committee's executive secretary, Marshall J. Goss, Office of the Administrator, Agricultural Research Service, U. S. Department of Agriculture, Washington 25, D. C.

Committee members at the meeting were: Clarence L. Benson, Benson Honey Co., Phoenix, Ariz.; Sam Frantz, Dublin, Ohio; Dr. D. D. Hill (vice chairman), head of farm crops department, Agricultural Experiment Station, Oregon State College, Corvallis, Ore.; Dale H. Johnston, Johnston Seed Company, Enid, Okla.; John W. Mathys, vice president, garden seed division, Northrup, King & Co., Minneapolis, Minn.; Donald M. Murphy, vice president, Corneli Seed Company, Inc., Twin Falls, Idaho; W. T. Nolin, Hamburg, La.; Walter Peirce, Peirce's Green Acres, Hutchinson, Kans.; Maurice A. Perry (chairman), Hemet, Calif.

## Benson Urges Hog Farmers To Farrow Less

In a statement released March 25, Sec. Benson urged hog farmers to hold close to their indicated March 1 intentions as to spring pig crop farrowings.

He emphasized the fact that hog prices are largely influenced by farmers' production, and that producers can maintain their relatively favorable position by maintaining stable production.

Careful planning, he said, will help avoid a repetition of the heavy production of 1955 which forced prices down to undesirably low levels during the fall and winter of 1955-56.

## Prolong Ladders Life With Linseed Oil

Max H. Falkner, farm buildings specialist at the University of Tennessee suggests treating ladders with a protective coat of linseed oil to keep rails and rung smooth, free from cracks, splinters, and prevent drying out and loosening up of rungs.

## Guernsey from Willow Street Herd Second High Fat Producer in Class

PETERBOROUGH, N. H. — A new record placing second in fat production among the 10 highest of the Guernsey breed in her class has just been completed by the registered cow, Zeitler Actor's Lizzy, a senior two year-old, owned by Raymond and Louise

Witmer, Penn Del Farm, Willow Street.

"Actor's Lizzy" produced 11,693 pounds of milk and 665 pounds of fat in 305 days on two times daily milking.

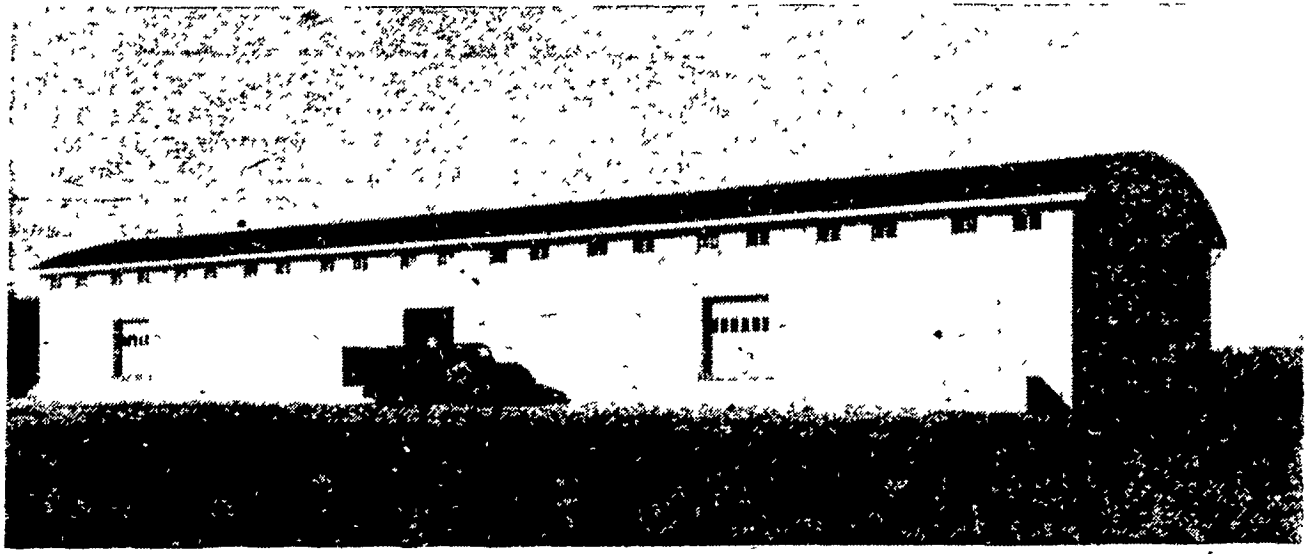
This purebred cow was bred

for production. Her dam Zeitler's Prediction Lizzy, has a record of 10,477 pounds of milk and 576 pounds of fat, made as a senior three year-old, in the 305 — 2X division and met calving requirements. "Actor's Lizzy" was sired

by Zeitler's Nanita's Actor, that has six tested daughters in the Performance Register of the American Guernsey Cattle Club

The record of this cow was supervised during the test period by Pennsylvania State University.

# P. L. Rohrer & Bro.'s Increased Facilities Means Better Service For You



P. L. ROHRER & BRO.'S new modern warehouse was designed and built to better serve you and your needs. It represents another step of P. L. Rohrer & Bro.'s continued effort to give you immediate service on seeds, fertilizers, and spray materials.

## ROHRER'S OFFER YOU THE HIGHEST QUALITY

Farm — Garden — Flower & Lawn Seeds  
DeKalb Corn — DeKalb Sorghum — DeKalb Chix  
Alfalfa — Clovers — Grasses

- ★ Certified Garry, Clinton, & Craig Oats
- ★ Certified Maine Grown Seed Potatoes
- Cobblers ● Katahdins ● Kennebecs
- Green Mountains

## SPRAY MATERIALS FOR:

Farm — Garden — Orchard  
Weedone 2, 4D Products

Special Prices to Custom Spray Operators

Time to top dress

## AEROPRILLS®

Ammonium Nitrate

33 1-2 % NITROGEN

High analysis means LOW COST application.

80 lb. bag ..... 3.45

Ton ..... 82.00

## MILLER'S FERTILIZER

5 - 10 - 10 Mineralized

80 lb. bag ..... 2.60

5 bags (400 lb.) ... 12.25

Ton (cash price) . . . 54.50

## HEPTACHLOR

5 gal. can ..... 24.00

4% Heptachlor Dust

50 lb. bag ..... 6.50

NO-SEED HORMONE

## Blossom-set

Makes tomatoes ripen one to three weeks earlier. Just spray on tomato blossoms. Practically every blossom sets fruit. Yields are much bigger. Many tomatoes are seedless.

12 oz. Aerosol . . . 1.79



## Seed Guard

Protects Seed Corn, Soy Beans, Sweet Corn, etc., against

- Wireworm
- Seed Corn Maggot
- Seed Rot Fungus
- Damping-Off Disease

Increase stands and yields

Costs approx. 10c acre

4½ oz. can treats

3 bu. corn 1.69

1 lb. can treats

10 bu. corn 4.59

## Rohrer's Fancy LAWN GRASS SEED



Contains approx. 42% Kentucky Blue Grass plus creeping Red Fescue, Bent Grass and Red Top. Does NOT contain any Rye Grass or other coarse grasses.

1 lb. Covers 250 Sq. Ft.  
1 lb. 1.35  
5 lb. 6.25  
25 lb. 28.75

Special Prices on Larger Quantities and to Landscape Gardeners.



Large 7 cu. ft.

Bale 4.75

4 cu. ft. 3.45



GOLDEN VIGORO Top Dress Lawns

Without Burning

25 lb. bg. 2.60

50 lb. bg. 3.95

## VIGORO

Regular

25 lb. bag ..... 1.70

50 lb. bag ..... 2.50

100 lb. .... 4.85

500 lb. .... 19.50

Get Maximum Yields on Your Alfalfa and Clover Crops by Adding to Your Spittle Bug Spray

## Nutri-Leaf

(60)

(A soluble (20-20-20) fertilizer containing added trace elements.)

or

## Liqua-Leaf

(10-10-8)

Don't fail to have your custom sprayer add Nutri-Leaf or Liqua-Leaf to your Spittle Bug Spray.

Nutri-Leaf 5 lb. bag .. 1.50

Nutri-Leaf 25 lb. bag . 6.75

Liqua-Leaf—1 gal .... 2.75

5 gal. 12.25 30 gal. 63.00

STORE HOURS: MON.—FRI. 7 A. M. TO 6 P. M. SAT. TILL 5.

# P. L. ROHRER & BRO., INC.

SMOKETOWN, PA.

Ph. Lanc. EX 2-2659