

895,276 Soil Bank Agreements Signed by Farmers by March 1

Reports from state Agricultural Stabilization and Conservation committees show that as of March 1, a total of 895,276 agreements had been signed by farmers placing 17,592,134 acres in the 1957 acreage reserve program of the

Soil Bank.

The agreements signed so far cover 3,029,655 acres of corn, 2,295,917 acres of cotton, 113,397 acres of rice 77,154 acres of tobacco and 12,076,011 acres of wheat, including winter wheat.

These figures are not yet final because of the fact that some counties have two lists:

one; Farmers who could not sign because the county allocation of funds was exhausted, and two: Farmers who desired to put more acres in the acreage reserve than the initial farm limit for each of the crops.

Until farmers on these lists are signed up, the figures will continue to increase, the USDA says.

The department estimates that it will be mid-March before the final figures on cotton and tobacco are in, and near the end of the month for other crops.

PASTURES

For year round grazing sow a Swiss Permanent Pasture. Ready to pasture in 8 weeks. No more reseeding. We also have an excellent Hay—Pasture—Silage Mix 2-3 cows per acre grazing. Casapa — Super — Green Pastures

FRED FREY
QUARRYVILLE, PA.
ST 6-2235

LANCASTER FARMING
Classifieds Ads Pay

Farmers Ask Quarantine For Witchweed

Farmer representatives from eight counties in North Carolina and South Carolina, where witchweed has been found, went on record as favoring a Federal quarantine against this recently discovered pest of corn and other crops at a public hearing called by the U. S. Department of Agriculture in Washington, D. C., March 5.

About 60 persons, including farmers, state and USDA pest-control officials and research workers, Congressional representatives, and others interested, attended the hearing, held in the Department's South Building.

A committee of eight farmers, one from each of the affected counties — four in North Carolina and four in South Carolina — presented a statement at the hearing endorsing a Federal witchweed quarantine in the interest of their own and other states. They urged, however, that regulatory action under the quarantine be confined to areas actually infested with the parasitic weed. Bill Hooks of Whiteville, N. C., and W. B. Norwood of Marion, S. C., acted as spokesmen for the group.

Farm Calendar

Today
County wide swine meeting—8 p. m., at the Farm Bureau Cooperative Dillersville Road.

Saturday
Lancaster County Flying Farmers — 10 a. m. at the heated hangar at Lancaster Airport.

Lunch will be held at the Glass Kitchen at 12:30 p. m. At 1:45 p. m. there will be a guided tour for the group through the Landis Valley Farm Museum.

Election of officers of executive committee of Lancaster County Agricultural and Home Economics Extension Assn.—9:30 a. m. at Farm Bureau Cooperative Assn., Dillersville Road.

Monday
Mens Garden Club, annual meeting and banquet—6:30 p. m. at the Brunswick Hotel.

Lincoln Community 4-H Club—7:30 p. m. at the Ward Bottled Gas Co., Route 222, Ephrata.

Tuesday
Dairy barn remodeling demonstration and meeting—9:30 a. m. at the farm of Melvin Wenger, R1 Mt. Joy, located about one mile southwest of Rheems.

Dairy barn remodeling demonstration and meeting—1:30 p. m. at the farm of B. Snively Garber, R2 Willow Street, located about three miles south of Lancaster and about ½ mile northeast of Mylin's Corner.

Annual dinner and meeting of the Beekkeepers Assn. — 6:30 p. m. at Hostetter's Banquet Hall, Mt. Joy.

Drumore 4-H Community Club—7:30 p. m. at the Chestnut Level Church.

Wednesday
Farm and Home Planning meeting—9:30 a. m. to 3 p. m. at the North Queen St. Branch of the Lancaster County Bank.

Hempfield Community 4-H Club—7:30 p. m. at the Farmdale School.

County-wide sheep growers meeting—room of the Farm Bureau Cooperative, Dillersville Road, Lancaster.

Mr. Ben Morgan will discuss current management practices.

Thursday
Garden Spot Community 4-H Club—7:30 p. m. at the Farm Bureau, Lancaster.

Western 4-H Tractor Club—7:30 p. m. at Naaman G. Hershey Implement Co., Manheim.

Monday through Saturday, March 25-30

Philadelphia Flower Show
Wednesday, March 27

District Extension Conference for southeast counties—at the First Presbyterian Church, 137 East Orange St., Lancaster.

Sixth Annual Polled Hereford Show, Sale to Be Held Monday

The sixth annual eastern Polled Hereford Assn. annual sale will be held Monday at the Guernsey Breeders Sale pavilion on Lincoln Highway East. Fifty-two animals are listed.

In addition to the sale, the association will hold its annual meeting at 4 p. m. Sunday at the Hotel Brunswick. The annual banquet will be at 7 p. m. Sunday at the Brunswick.

A show will be held Monday morning before the sale.

Judge for the show will be W. J. Largent, Merkel, Texas and Col. Jewett Fulkerson, Liberty, Mo., will cry the sale.



FOR BIGGER EGG PROFITS

Six years of leadership as the Highest Average Profit producers in America's two oldest 3 and 5 year Random Sample Tests (New York and Calif.) is proof that H&N BALANCED BREEDING pays off consistently with extra egg profits for you.

BROILER GROWERS: For peak broiler profits make your next flock 1st generation white Vantress Broiler Chicks from Florin Farms.

FREE price list and literature sent on request

FLORIN FARMS, INC.

Wt. Joy 2 - Lancaster County - Penna.

If you have a feeding problem . . . tell us.
43 years of continuous service to our many customers.

Full line Eshelman Dairy & Poultry Feeds

Profit
proved
plan

W. W. F. POULTRY & DAIRY FEEDS

- * Farm Seeds
- * Hardware & Tools
- * Spray Materials
- * Coal
- * Fertilizer
- * Lime

OUR REPEAT BUSINESS IS A SURE SIGN OF SATISFACTION

WEST WILLOW FARMERS ASSOCIATION

WEST WILLOW Ph. Lanc. EX 4-5019
FAMOUS FOR DELIVERY IN MINUTES

Myer's Metered Gas Service For All Homes

- ★ Home Heating
- ★ Warm Air and Hot Water
- ★ Caloric, Tappan and Wincroft Gas Ranges
- ★ Lawson Stone Lined Water Heaters
- ★ Servel Refrigerators
- ★ Revco Freezers
- ★ Cabinets for Kitchens—wood and metal
- ★ Maytag Washers and Dryers



MYER'S METERED GAS SERVICE

Manheim Phone MO 5-2775

Learn The Facts About This Amazing New Invention

The Hawkins Patented Slatted Poultry House Floor

Permanent Mechanical Litter Perpetual Cleanliness



... patents pending

THERE IS A NEW, EASIER AND MORE PROFITABLE WAY TO HOUSE YOUR LAYING HENS

1. Would you like to keep twice as many Hens in your present houses?
2. Would you like to Clean your Laying Houses only once each year?
3. Would you like to Eliminate all Litter Cost and Labor with Litter?
4. Would you like to get better Egg Production?
5. Would you like to gather Cleaner Eggs than you ever thought possible?
6. Would you like to Eliminate Filth and Wet Spots in your laying houses?
7. Would you like to produce Better Quality Market Eggs?
8. Would you like to Eliminate Medication Costs to control Intestinal Parasites?

If Your Answer Is "Yes" To The Above Questions—Stop In To See Us Today. Let Us Show You This Revolutionary New Invention—

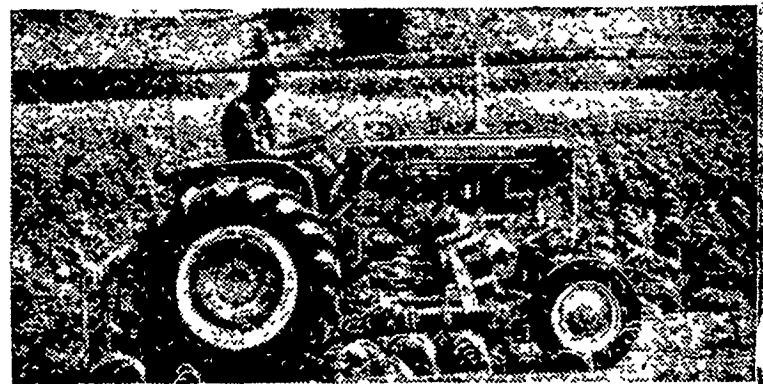
"The Hawkins Patented Slatted Poultry House Floor"

See the HAWKINS Floor on Our Farms

HIESTAND, Inc.

MARIETTA R. D. 1. Ph. HA 6-9301

Low-Line, High-Crop Clearance Are Combined in NEW TRACTOR



A new low-line, high-crop clearance 3-plow tractor weighing approximately 4,100 pounds, said to be a new concept in tractors, is announced by Allis-Chalmers according to their local dealers, who attended a sales meeting at the company's Harrisburg branch where this new tractor was introduced.

Allis-Chalmers, says this new Model D-14 gives farmers the conveniences of a low-profile tractor, easy to get on and off, but with as much cultivating clearance as a high-wheel row-crop tractor.

Some of the other exclusive features in this tractor are a new power control system that permits shifting on-the-go to high or low range, providing 8 forward speeds; completely enclosed hydraulic system; unusual comfort, security, and vision with the new easy-ride seat and wide roomy platform;

and new POWER-CRATER engine rated at 35 hp plus (manufacturer's rating).

A new roll-shift front axle which also changes the spacing of front wheels for row widths is now available for the first time in a tractor. This combines with power-shift rear wheels introduced by Allis-Chalmers in 1948 so that all wheel spacings can be changed without blocks or jacks.

Among other Allis-Chalmers "firsts" included in the new tractor are two-clutch power control; automatic TRACTION BOOSTER; and SNAP-COUPLER hitch. A brand-new line of "ROLL-IN" quick-hitch cultivators that can be rolled into position and quickly put on or removed without wrenches has been designed for the D-14. These are a part of the complete line of implements available for this tractor. Adv.