

Farm Calendar

Today
Lancaster County Farmers' Assn. meeting at the Poultry Center, Lancaster. Speaker and refreshments

Saturday
Executive committee of the Extension Assn.—9 30 a. m. at the Farm Bureau
Lancaster Senior Extension Club banquet—7 p. m. at Kauffman's Tea House, East Petersburg.

Monday
4-H Farm and Home Electric Club—7 30 p. m. at the PP & L building, Lancaster.
4-H Ayshire and Jersey Club reorganization meeting—7 30 p. m. at the Artificial Breeding Cooperative, Route 230 Bypass.
John Deere Day at H. S. Newcomer & Son, Mt. Joy.

Garden Spot Organic Club—7.30 p. m. at the Poultry Exchange Building, Roseville Rd.
Speaker will be Ben Glanzer, former president of the Washington D C Organic Club

Tuesday
Tobacco seed treating and cleaning demonstration meeting—9 a. m. at the farm operated by Reed Wissler, R2 Ephrata, located along Route 222, one mile southwest of Akron
Tobacco seed treating and cleaning demonstration meeting—1 30 p. m. at the farm of Harry Metzler, R4 Lancaster, located along Leamon Rd. between Strasburg and Hartman Bridge Pikes.
Donegal 4-H Community Club at the Washington School, Florin.

Wednesday and Thursday, International Harvester meeting at D. L. Diem & Sons, Lititz.
Tuesday, Wednesday and Thursday
State County Agents Conference at Penn State with the Soil Conservation Service

Wednesday
Tobacco seed treating and

Swine Feeding Trails Favor Pelleted Rations

The results of swine-feeding trials by the Montana Agricultural Experiment Station show that the feeding of pelleted rations increases the daily gains of pigs, reduces the amount of feed required per 100 pounds of grain, and reduces the time to reach market weight

In these trials the rations consisted largely of small grains and their by products and were fed in both pelleted and meal form to different groups of pigs. In one experiment the pellet-fed pigs gained 12 pound more per day, consumed 53 pounds less feed per 100 pounds of gain, and reached market weight 12 days sooner than meal-fed pigs.

cleaning demonstration meeting—9 a. m. at the farm of S. S. Boshnaugle, R1 Columbia, north of Route 30, between Mountville and Columbia.
Tobacco seed treating and cleaning demonstration meeting—1 30 p. m. at the farm of J. Raymond Newcomer, R2 Lititz, located along Manheim Rd. between Lititz and Erb's Church.

4-H Guernsey Club in the Vo-Ag room, Solanco High School, Quarryville.
Eastern 4-H Tractor Club at Neuhauser Implement Co., Bird-in-Hand

Thursday
Lititz-Manheim 4-H Community Club at the Fairland School on Fruitville Pk
Western 4-H Tractor Club at Brubaker's Implement Co., Salunga.

Saturday, March 16
Lancaster County Flying Farmers—10 a. m. at the heated hangar at Lancaster Airport
Lunch will be held at the Glass Kitchen at 12 30 p. m. At 1 45 p. m. there will be a guided tour for the group through the Landis Valley Farm Museum

Complete Soil Test Use Urged For Top Results

The practice of taking soil samples and using complete soil tests was emphasized at a soils and crops meeting at White Horse Fire Hall Tuesday night by County Agent Max M. Smith, Amos H. Funk, president of the Lancaster County Soil District and W. Martin Muth, U. S. Soil Conservation Service.

Funk urged the 28 eastern county farmers attending to use the complete tests. He cited as an example an occasion when a crop on his farm showed a nutritional deficiency.

The test showed that the crop needed not just one nutrient but a balance of fertilizer applied to make it grow properly.

Max Smith said that organic matter and phosphorus levels are low in Lancaster County soils. To build up organic matter, he suggests longer rotations, erosion control, and the use of more grasses in the crop rotation.

Most of the natural nitrogen available to the crop is found in the organic matter in the soil.

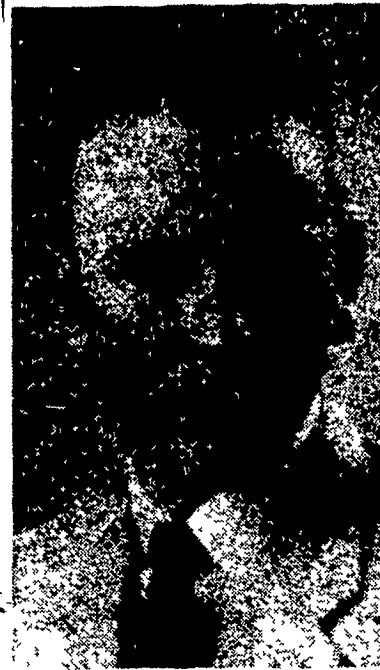
The phosphorus level can be best determined and maintained by following the recommendations given as the result of a soil test

Muth showed slides of various soil saving structures and results obtained with their use. Included were tillable terraces, diversion terraces, strips, tiles, and ditches. He said that drainage of low places is just as important as soil and water conservation as construction of soil saving terraces on rolling land

He also recommends an integrated program of wildlife conservation with certain phases of soil and water conservation work.

Farmer attending the meeting were given an opportunity to request assistance for individual problems on their farms

James A. Hess Named Delegate To National 4-H Conference



James A. Hess

James A. Hess, 20, son of Mr. and Mrs. Elvin Hess, Strasburg, RD1, Lancaster county, has been selected for outstanding achievement in 4-H Club work and for leadership in club and various community affairs, and named as one of four delegates to the national 4-H Conference, in Washington, D. C., June 15 to 20, according to an announcement made Monday by Allen L. Baker, state 4-H Club leader, Pennsylvania State University.

The four delegates, were picked from the nearly 40,000 4-H Club members in Pennsylvania by the 4-H Club staff at Penn State.

Hess is a graduate of high school, and helps operate his father's 117 acre farm. He has

completed 4-H projects in baby beef, dairy, corn, tobacco and capons. He has served two terms as president of his local 4-H Club, is president and treasurer of Sunday School, and has been president of the county-wide baby beef club, and vice president of the county-wide dairy club. When he was 18 he was a member of the 4-H Dairy Demonstration team sent by Pennsylvania 4-H to represent the state in the National Dairy Cattle Congress, at Waterloo, Iowa.

The other three delegates are Fred A. Strouse, 19, R1 State College, Centre County; Sylvia Salinshuck, 16, R3 Monaca, Beaver County, and Nancy Heath, 17, R3 Benton, Columbia County.

In Washington the four winners will meet with delegates for a program of instruction designed to equip them for added responsibilities in club and community leadership.

They will be accompanied by Chauncey P. Lang, and Miss Patricia Kelley, assistant state 4-H Club leaders

E. M. Linton Reserves Name for Guernseys

Earl M. Linton, Kirkwood, has reserved the prefix "Linton Acres," use in naming his purebred Guernsey cattle, according to the American Guernsey cattle Club.

This new prefix has been placed on file with the club, and from now on Linton will have exclusive use of it. In fact "Linton Acres" will be his trademark in the Guernsey world.

Build stronger litters with Red Rose "early nutrition"



Early critical growth periods call for extra nutrients to build stronger litters. Red Rose Pig Starter Pellets supplies this "early nutrition" with essential growth nutrients, including Vitamin B₁₂ and antibiotics.

Red Rose Pig Starter Pellets and other Red Rose Pig Feeds are scientifically compounded to help overcome growth setbacks and runtiness . . . keep pigs well conditioned for vigorous, profitable weight gains. For more pork profits feed your pigs Red Rose.

Red Rose Pig Starter Pellets

Supplies "early nutrition"—added vitamins and antibiotics that permit the litter to be weaned earlier without growth setbacks. Ready to feed Pig Starter helps pigs grow faster, more uniformly.



MUSSER FARMS, INC.
Pa.

R. W. HOLLINGER & SONS, INC.
Manheim, Pa.

OWN & REA
Pa.

BRO.

IT'S HERE!



The new FORD two-way PLOW

Throw all furrows in same direction
Eliminate dead furrows . . . back ridges

Fully tractor mounted, this new two-way two-furrow moldboard plow is just the thing for convenient operation—effective, low-cost performance. Bottoms raise, reverse and lower quickly and easily with Ford Tractor's hydraulic control system . . . and the plow is convenient to transport, maneuver and store.

By throwing all furrows the same direction you can eliminate dead furrows and ridges for smoother irrigated fields. Or you can throw all furrows uphill on hillsides to slow water run-off and erosion. Also excellent for contour and strip farming and for terrace maintenance.

See this plow in action . . . ask for a demonstration

Allen H. Matz

Ph. AN 7-6502

Denver



Sauder Bros.

New Holland

Ph. EL 4-8721

Haverstick Bros.

Columbia Pike

Lancaster Ph. EX 2-5722

Elizabethtown Farmers Supply Inc.

Ph. 7-1341

Conestoga Farm Service

Quarryville

Ph. ST 6-2597