

Lancaster Farming

Vol. II, No. 13

Quarryville (Lancaster County) Pa., Friday, Feb. 1, 1957

\$2 Per Year

Exchange Use Heavier in 1956 Says Brubaker

Two hundred twenty-six more growers took advantage of the marketing facilities of the Lancaster Poultry Exchange in 1956 than in 1955, Levi H. Brubaker, president, reported at the annual meeting Jan. 17.

In all, 871 growers marketed 6,407,415 birds in 82 sales for an average price of 21.38 cents for the Tuesday sales and 20.65 cents for the Thursday sales. Sixty-two per cent of the sales were on Thursday.

In predicting the future of the poultry business, Brubaker said, "With the government creating new acres of productive land and loaning money for business, I wonder if the government wants to preserve the family farm or just make a token effort in that direction."

The construction of the new Poultry Center building was the topic of much discussion both by Brubaker and by a seven-man panel representing various segments of the poultry industry.

Brubaker said, "There is probably no more difficult time to undertake a project such as this and there probably is no time when it was more needed."

"But when the new Civic Auditorium is built just across the road, we will be right at the hub of the county here with this building."

A panel composed of Glenn H. Herr, Manheim; Paul Andes, Bareville; Willis McCarthy, New Holland; Reynolds Minnich, Lancaster; Robert Thompson, Lancaster; Roy B. Erb, Lancaster; and Charles D. Warfel II, Conestoga, discussed some of the problems facing the industry.

Lowell Blass, Reading, was moderator.

One point on which the panel found agreement was that a federal and state inspection program for dressed poultry is due for the immediate future.

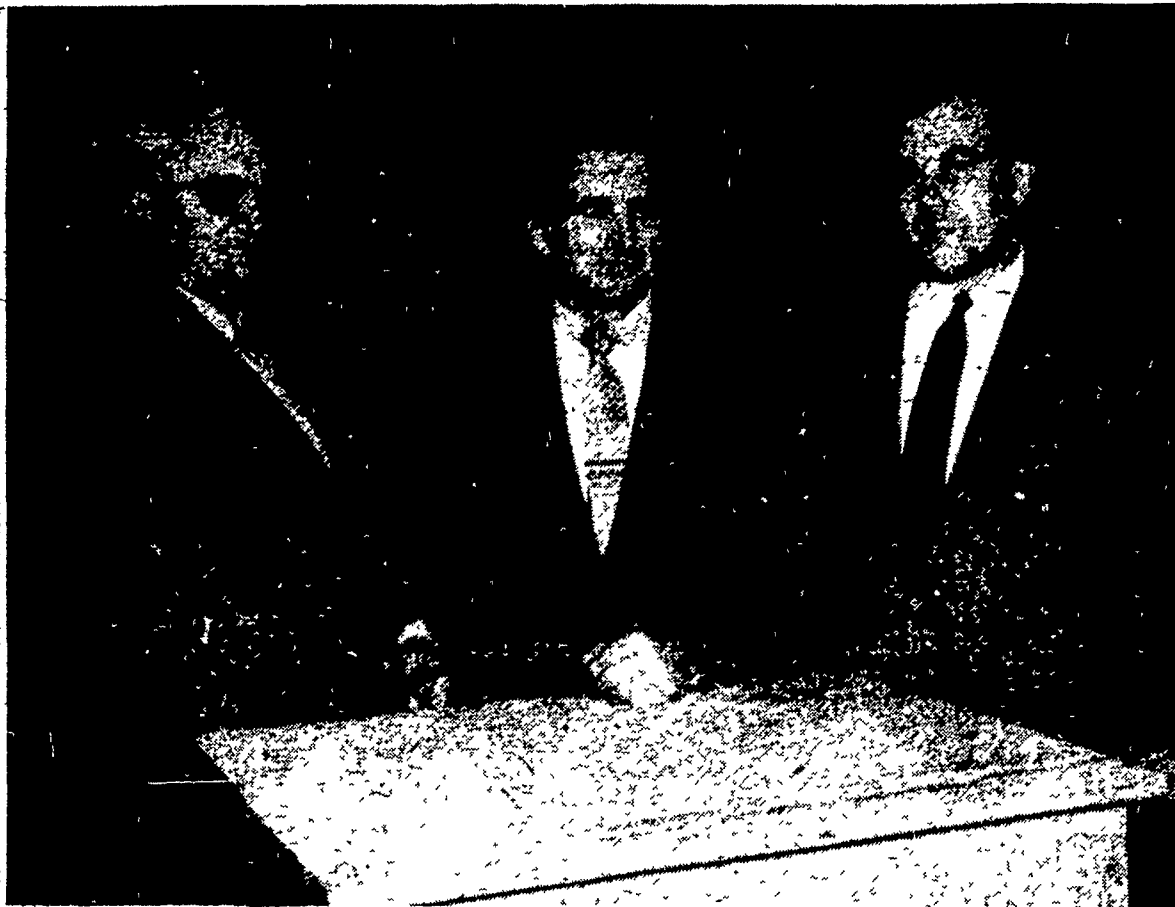
However, it was felt that the inspection will not affect either production methods or the market. As one member noted, processors grade and inspect their own products on the line now.

L. Howard Martin, Lancaster, was re-elected to the board of directors of the association. Newly elected members are Carl B. Risser, Lititz, and Paul Rowe, Strasburg.

Martin represents feed and hatchery men, Risser the buyers and processors, and Rowe the producers.

A guest of the association was Abram G. Bucher, who serves as an advisor to the board of directors.

Entertainment was furnished by the Catalina Four, a quartet composed of Raymond D. Engler, Aaron Landis, John Stoner and Stanley Longenecker.



ELECTED TO THE BOARD of directors of the Lancaster County Poultry Exchange Jan. 17 were (l. to r.) Carl B. Risser, Lititz; Paul Rowe, Strasburg; and L. Howard Martin, Lancaster. Risser represents buy-

ers and processors; Rowe, producers; and Martin, feed and hatchery men. This is Martin's second term on the board. (Staff Photo)

Lancaster Milk Price \$5.95 Effective Today

Dairymen start receiving \$5.95 a hundredweight for milk marketed in the Lancaster area today under a tentative order issued by the Pennsylvania Milk Control Commission.

At a hearing held Jan. 18 in Harrisburg, milk dealers and producers in the Lancaster area had proposed price changes that would have upped the price of milk to consumers by nearly two cents a quart. The proposal was based on increased operating costs.

Of the new increase, the producer is getting a 25 cents increase and the dealers are getting 15 cents for each hundred pounds of milk. This means a price rise to the consumer of about a cent a quart. There are 46½ quarts to a hundred pounds of milk.

The action followed closely on the heels of a similar order for the Philadelphia area suspending the quarterly one cent a quart price decrease scheduled to go into effect there on the first of the year.

Half-pints of milk sold to schools will be returned to the levels paid during October, November and December of last year. Milk sold to schools for resale through dispensers will be priced at two cents a quart less than the price of milk sold through dispensers in restaurants during those same months.

Milk dealers had been granted a 15 cent a hundred increase and producers 5 cents a hundred last April 1. The Commission granted a half-cent a quart drop in price to consumers instead of the scheduled one cent decrease.

Milk prices to the consumer are now 24 cents a quart for home delivery and 23 cents in the stores.

Prices to the consumer will decrease by one cent a quart from the Feb. 1 levels on April 1, increase one cent on July 1 and again on Oct. 1 and decrease one cent a quart next Jan. 1 under the quarterly price adjustments set up by the Milk Control Commission.

Pennsylvania Second In Holstein Numbers

BRATTLEBORO, Vt. — Pennsylvania was again second in America in both the number of Holstein registrations and the total of animals transferred last year.

American Holstein-Friesian Assn. figures show that 27,740 head of Holsteins were registered in the state last year and that 16,825 animals changed owners during the same period.

New York was first in both categories with totals of 37,041 registrations and 24,442 transfers.

Other states ranking in registrations are Wisconsin, 25,598; Ohio, 15,930; Michigan, 12,597; and Illinois, 10,341. In transfers other leading states are Wisconsin, 14,657; Ohio, 10,890; Michigan, 9,509; and Illinois, 6,571.

Nationally, new all-time highs of 205,527 Holsteins registered and 127,769 transferred were set. For the second consecutive year, both figures were greater than the combined totals of all other dairy breeds.

Inter-State Producers Told Market Pool Can Cost Producer

Members of the Quarryville and Southern Lancaster County locals of Inter-State Milk Producers Cooperative were told Jan. 24 that adoption of a marketwide pool for the Philadelphia milk marketing area will cost either the producer or the consumer two to two and one-half cents a quart.

O. H. Hoffman, Jr., general manager of Inter-State said that the marketwide pool system will result in the top quality producer receiving a little less for his milk and the other producer receiving a little more for his as long as no more milk comes into the marketing area.

"I have never known of a single instance in which the introduction of a market pool did not bring into the area more milk than could be used," Hoffman said.

Inter-State is now battling to retain the present handler pool system, under which the producer is paid on the basis of milk used by the handler to which he ships rather than the average for all handlers in the area. A lengthy hearing is being conducted by the Pennsylvania Milk Control Commission.

Twenty-five year membership awards were presented James W.

Heavy Poultry Breeds Susceptible to Typhoid

The American Veterinary Medical Assn. reports that the heavy breeds of poultry seem to be more susceptible to fowl typhoid than are the light breeds.

Farm Bureau Coop to Meet On Wednesday

The twenty-third annual meeting of the Lancaster County Farm Bureau Cooperation Assn. has been scheduled for Wednesday, Feb. 6.

Charles C. Burkins, general manager of the cooperative, said the meeting would begin at 10 a.m. in the Guernsey Breeders Sales Pavilion at Ronks, six miles east of Lancaster.

Burkins also said the program will include the election of four members to three-year terms on the association's board of directors.

He added the nominating committee has announced the following slate of candidates for the directorships:

Northeastern district — Walter Witwer, R2 Gordonville, incumbent, and Adam Esbenshade, R2 New Holland.

Northwestern district — Henry L. Shenk, R2 Manheim; and Henry L. Hess, R2 Elizabethtown.

Southwestern district — Everett Kreider, R1 Quarryville, incumbent, and Robert Shellenberger, R2 Columbia.

Southeastern district — Elvin Hess, R1 Strasburg, incumbent, and Walter Himmelreich, R1 Ronks.

Additional nominations may be made from the floor of the meeting.

Reports on the past year's operation of the farmer-owned business will be made by Burkins and Charles M. Wolgemuth, assistant manager.

A report on farming conditions in Lancaster county will be made by M. M. Smith, county agricultural agent.

Luncheon will be served at noon and the afternoon session will include a question and answer period in which members will quiz Lancaster County and Pennsylvania Farm Bureau employees about the cooperative's services.



O. H. Hoffman, Jr.

Gardner, R1 Peach Bottom, and Leiper Jackson, R2 Peach Bottom.

About 300 members and wives attended the luncheon meeting at the Quarryville Methodist Church.

Poultry Inspection Bill Introduced in Congress

Bills calling for compulsory poultry inspection were introduced in the opening session of the 85th Congress. In the Senate such a bill was introduced carrying the signature of 11 sponsoring Senators as follows: Geo. D. Aiken (R. Vt.); Gordon Allott (R. Col.); Edward J. Thye (R. Minn.); Margaret Chase Smith (R. Me.); William Purtell (R. Conn.); Irvin Ives (R. N.Y.); Frederick Pyne (R. Me.); J. Allen Frear (R. Del.); John Butler (R. Md.); and John W. Brecker (R. Ohio).

This bill would place poultry inspection in the U. S. Department of Agriculture. Another bill specifies that it must be under the meat inspection bureau of the USDA.