

Prizes

Corn

Class 4 — (district I)  
10 ear hybrid dent — second place — S. S. Boshnagle, R1 Columbia

Class 6 — (State wide)  
10 ear open pollinated dent of flint first — D. M. Landis, R6 Lancaster, second, Daniel A. Brubaker, R1 Ephrata, fourth, Clyde Brubaker, R1 Ephrata, fifth, G. A. Brubaker, R1 Ephrata.

Class 7 — (district 1)  
30 ear hybrid dent — first, S. S. Boshnagle, R1 Columbia, fifth, Frank Frederick, R2 Denver

Class 9  
30 ears open pollinated dent or flint — first, D. M. Landis, R6 Lancaster; fourth, G. A. Brubaker R1 Ephrata, fifth, Clyde Brubaker, R1 Ephrata.

Class 13 (4-H Club Class, Dist. II)  
Third, William and Robert Maule, Quarryville, fifth, James R. Groff, R7 Lancaster.

Class 15 (Vo-Ag, Dist. I)  
Seventh, J. Nelson Harnish, Willow Street

Dressed Turkeys

Class 168A (Large Young Toms, 18 lbs. or over)

first, Harry Lamparter, Mountville; third, Harry Lamparter.

Class 168C (Large Loung Hens, 12 lbs. or over)

first, second and third, Harry Lamparter.

Class 168D (Small young hens less than 12 lbs.)

First and second, Harry Lamparter, Champion Dressed Turkey —

Harry Lamparter, Reserve Champion Dressed Turkey — Harry Lamparter, Best Display Dressed Turkeys — Harry Lamparter.

Edible Nuts — Walnuts

Class 85D (Kernels)

Second, Daniel A. Brubaker, R1 Ephrata; third Mrs. Edna G. Shearer, R2 Mt. Joy.

86B (Seedling)

Second, Daniel A. Brubaker.

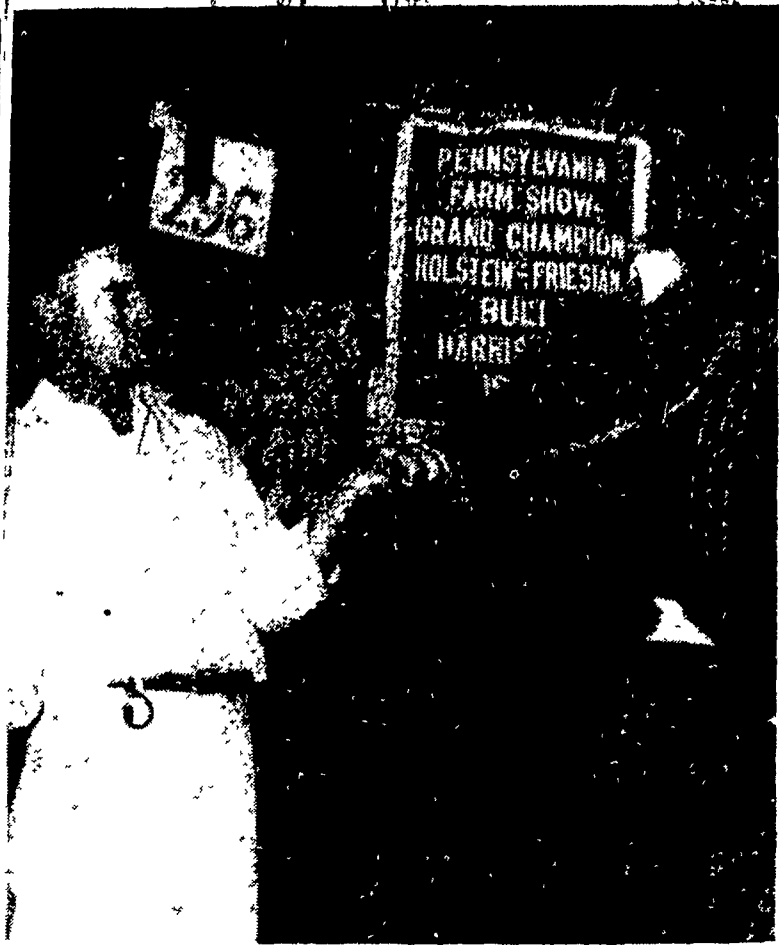
Edible Nuts — Hickory Nuts

Class 85D (Kernels)

Mockernut)  
Second, Daniel A. Brubaker, R1 Ephrata.

Pecans

Class 95C (Kernels)  
First, Mrs. Edna G. Shearer, R2



SWAMPY HOLLOW RAG APPLE LEADER, a two-year-old Holstein bull, owned by John N. Umble, R1 Atglen, was judged grand champion of the breed. He was reserve junior champion in 1955, and reserve grand champion at the 1956 Farm Show (Staff Photo)

Mt. Joy.  
Vocational School Class Clothing

Class 74 (afternoon dress)  
Third, Judy Martin, Landisville

Class 74 (cotton afternoon dress)  
Second, Trevena Stehman, Landisville

Class 74 (school dresses)  
Second, Julie A. Hafnly, Landisville

Class 77 (wool jumper)  
Fifth, Lurda Stehman, Landisville

Class 78 (rayon suits)  
Third, Betty L. Herr, Quarryville

Tobacco  
Type 41 Pennsylvania Seedleaf or Broadleaf

Class 69. Wrapper B's  
Division A. Over 26 inches

First, Elmer F. Shelly, R4 Manheim; Second, Donald Swarr, R1 Landisville, Third, Art Reist, 1050 Eder Rd., Lancaster; Fourth, Roy M. Rohrer, R1 Strasburg, Fifth, LeRoy H. Kreider, R1 Kinzers, Sixth, J. A. Hostetter, R1 Manheim, Seventh, Fred Gestewitz, R1 Box 342, Lancaster, Eighth, J. Arthur Swarr, Landisville; Ninth, Lee Snyder, R4 Manheim; Tenth, Jay Richard Nissley, R4 Manheim; Eleventh, Landis L. Nissley, R4 Manheim; Twelfth, Lizzie Snyder, R4 Manheim.

Class 69. (C1) Wrapper B's  
Division B. 26 inches and under

First, Lee Snyder, R4 Manheim; Second, Leroy H. Kreider, R1 Kinzers, Third, Witmer J. Rohrer, R1 Strasburg; Fourth, J. Arthur Swarr, Landisville; Fifth, James Hess, R1 Manheim; Sixth, Willis Hackman, R3 Elizabethtown; Seventh, O. H. Martin, R1 Mt. Joy; Eighth, Lizzie Snyder, R4 Manheim; Ninth, A. B. Weaver, R1 Narvon, Tenth, Abner C. Brown, R1 East Earl; Eleventh, Donald Swarr, Landisville; Twelfth, Elmer F. Shelly, R4 Manheim.

Class 70. (C2) Filler B's  
Division A. Over 26 inches

First, David E. Buckwalter, R3 Lititz; Second, Lizzie Snyder, R4 Manheim; Third, Art Reist, 1050 Eaden Rd., Lancaster; Fourth, Witmer J. Rohrer, R4 Strasburg; Fifth, Donald Swarr, Landisville; Sixth, Lee Snyder, R4 Manheim; Seventh, J. Arthur Swarr, Landisville; Eighth, James Hess, R1 Manheim; Ninth, Roy M. Rohrer, R1 Strasburg; Tenth, Larry Nissley, R2 Holtwood; Eleventh, John H. Hess, R1 Manheim; Twelfth, Euguen Rohrer, R1 Strasburg.

Class 70. (C2) Filler B's  
Division B. 26 inches and under

First, John D. Habecker, R2 Lancaster; Second, Donald Swarr, Landisville; Third, John S. Habecker, R1 Lancaster; Fourth, Kenneth H. Habecker, R1 Lancaster; Fifth, A. B. Weaver, R1 Narvon; First, Lizzie Snyder, R4 Manheim, Seventh, Roy M. Rohrer, R1 Strasburg; Eighth, John Henry Hess Jr., R1 Manheim; Ninth, J. Arthur Swarr, Landisville; Tenth, James Dougherty, R1 Lancaster, Eleventh, A. L. Hostetter, R1 Manheim, Twelfth, Willis Hackman, R2 Elizabethtown

Class 71 Binder Type  
Division A Over 26 inches

Fifth, Lizzie Snyder, R4 Manheim, Second, C. H. Martin, R1 Mt. Joy, Third Donald Nissley, R2 Holtwood, Fourth, Milton Marton, R1 Mt. Joy; Fifth, Witmer J. Rohrer, Strasburg, Sixth, Lee Snyder, R4 Manheim, Seventh, J. Arthur Swarr, Landisville, Eighth, Donald Swarr, Landisville, Ninth, Abner C. Brown R1 East Earl, Tenth, Roy M. Rohrer, Strasburg, Eleventh, Paul Nissley, R2 Holtwood, Twelfth, J. Roy Nissley, R4 Man-

heim

Class 71 Binder Type  
Division B 26 inches and under

First, Lee Snyder, R4 Manheim, Second, A. L. Hostetter, R1 Manheim, Third, Donald Swarr, Landisville; Fourth, James Hess, R1 Manheim; Fifth, J. Arthur Swarr, Landisville; Sixth, Abner C. Brown, R1 East Earl, Seventh, John Henry Hess, R1 Manheim, Eighth, Lizzie Snyder, R4 Manheim, Ninth, Roy M. Rohrer, Strasburg, Tenth, Landis L. Nissley, R4 Manheim, Eleventh, A. B. Weaver, Narvon, Twelfth, John Shererberger, R4 Manheim.

4-H Club Classes  
Type 41 Pennsylvania Seedleaf or Broadleaf

Class 72 (C1) Wrapper B's  
First, James Graybill, R2 Lititz, Second, James Wolgemuth, R1 Bareville, Third, LeRoy Esbenshade, 1631 Esbenshade Rd., Fourth, Stanley Newcomer, R1 Mt. Joy; Fifth, Mark Nestleroth, R3 Manheim, Sixth, Carl Weaver, R1 New Holland, Seventh, Melvin Graybill, R2 Lititz, Eighth, David Martin, R1 Mt. Joy, Ninth, Jay Hostetter, R1 Manheim; Tenth, Betty J. Hahn, R1 Columbia

Class 73 (C2) Filler B's  
First, James Graybill, R2 Lititz, Second, David Martin, R1 Mt. Joy, Third, Edward Graybill, R2 Lititz, Fourth, E. Bruce Boyd, R1 Ephrata, Fifth, Melvin Graybill, R2 Lititz, Sixth, Carl Weaver, R1 New Holland, Seventh, James Wolgemuth, R1 Bareville; Eighth, Jay Hostetter, R1 Manheim, Ninth, Eugene Buckwalter, R3 Lititz, Tenth, David Boyd, R1 Ephrata

Class 74. Grand Champion Wrapper James Graybill, R2 Lititz

Class 75 Grand Champion Filler James Graybill, R2 Lititz.

Vegetable  
Class 99kk — Squash — Mammoth — Sweet Type

First, Millard Heisev, Elizabethtown.

Class 99ll — Sweet Potatoes — Jersey Type

First, Freeman H. Becker, 365 N. Broad St., Lititz; Second, Wm.

Diffenderfer, Elizabethtown

Class 101h — Sweet Potatoes

First, Donald H. Fellenbaum, Washington Boro Second, J. Nelson Harnish, Willow St., Third, Mervin Conrad, R2 Lancaster

Class 99K — Onions — Globe Type

Second, Daniel A. Brubaker R1 Ephrata

Class 99L — Onions — Flattened Type

Second, Daniel A. Brubaker R1 Ephrata

Class 97B — Tomatoes, 2 lbs

First, A. H. Miller, R1 Manheim, Fourth, Edwin Miller, Landisville.

Guernsey Cattle  
Class 430 — Heifer, 1 Year And Under 18 Months

Sixth, C. Kenneth Young, R1 Mt. Joy.

Class 431 — Heifer, 18 Months And Under 2 Years (Never Freshened)

Fourth C. Kenneth Young, R1 Mt. Joy.

Class 435 — Heifer, 2 Years And Under (Never Freshened)

Sixth, Glenn B. Bushong, R2 Columbia

Class 439 — Cow 5 Years Or Over  
Third H. Robert Mumma, Landis-

heim

Class 71 Binder Type

Division B 26 inches and under

First, Lee Snyder, R4 Manheim, Second, A. L. Hostetter, R1 Manheim, Third, Donald Swarr, Landisville; Fourth, James Hess, R1 Manheim; Fifth, J. Arthur Swarr, Landisville; Sixth, Abner C. Brown, R1 East Earl, Seventh, John Henry Hess, R1 Manheim, Eighth, Lizzie Snyder, R4 Manheim, Ninth, Roy M. Rohrer, Strasburg, Tenth, Landis L. Nissley, R4 Manheim, Eleventh, A. B. Weaver, Narvon, Twelfth, John Shererberger, R4 Manheim.

Class 99K — Onions — Globe Type

Second, Daniel A. Brubaker R1 Ephrata

Class 99L — Onions — Flattened Type

Second, Daniel A. Brubaker R1 Ephrata

Class 97B — Tomatoes, 2 lbs

First, A. H. Miller, R1 Manheim, Fourth, Edwin Miller, Landisville.

Guernsey Cattle

Class 430 — Heifer, 1 Year And Under 18 Months

Sixth, C. Kenneth Young, R1 Mt. Joy.

Class 431 — Heifer, 18 Months And Under 2 Years (Never Freshened)

Fourth C. Kenneth Young, R1 Mt. Joy.

Class 435 — Heifer, 2 Years And Under (Never Freshened)

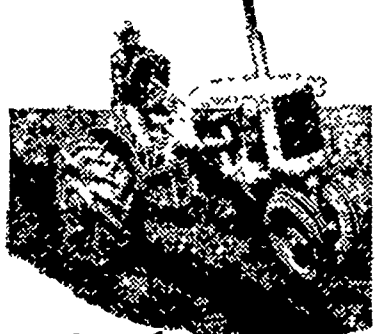
Sixth, Glenn B. Bushong, R2 Columbia

Class 439 — Cow 5 Years Or Over  
Third H. Robert Mumma, Landis-

(Continued on page 8)

**MUSSER**  
**Leghorn Chicks**  
For Large White Eggs  
**DONEGAL**  
**WHITE CROSS**  
For Broiler Chicks  
"Direct from the Breeder"  
Phone Mt. Joy 3-4811  
*Musser Leghorn*  
FARMS  
MOUNT JOY, PA.

Allis-Chalmers CA



Complete  
2-Plow Tractor

When you want performance in the 2-plow tractor class, be sure to let us show you the Allis-Chalmers CA. Nowhere can you find a tractor — as complete an all-around-the-farm tractor — that offers so much for so little.

**ALLIS-CHALMERS**  
SALES AND SERVICE

**Mann & Grumelli**  
Farm Service  
Quarryville, Pa.

**R. S. Weaver**  
Stevens, Pa.

**L. H. Brubaker**  
Lititz, Pa.

**N. G. Myers & Son**  
Rheims, Pa.

**L. H. Brubaker**  
Lancaster, Pa.

**Snavelys Farm Service**  
New Holland, Pa.

More beef at less cost!

Red Rose 30% Cattle Supplement  
with miracle S.B.L.\*



\*S.B.L. is the Red Rose abbreviation for Stilbestrol—the wonder beef-building additive that boosts beef gains over 35%! Your cattle can gain an extra 1/2 to 3/4 pounds per day — yet the cost of gain is cut from 2 to 4 cents per pound. For faster, cheaper gains . . . for more beef profits—get complete, ready-to-feed, Red Rose 30% Cattle Supplement with miracle S.B.L.!

Red Rose Steer Feed

Added to corn or other grain, Red Rose Steer Feed will produce economical gains and build well-finished carcasses. Goes far toward shortening the time required to fatten steers on corn alone.



MUSSER FARMS, INC.  
R. D. 2. Columbia, Pa.

DAVID B. HURST  
Bowmansville, Pa.

WEST WILLOW FARMERS  
ASSOC.  
West Willow, Pa.

R. W. HOLLINGER & SONS,  
INC.  
Manheim, Pa.

BROWN & REA  
Atglen, Pa.

A. L. HERR & BRO.  
Quarryville, Pa.