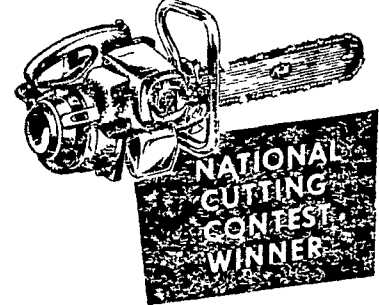


HEADS TURKEY GROUP

CINCINNATI, Ohio — Trevor L. Jones, Springfield, Ill., was elected president of the National Turkey Federation at its ninth annual winter convention here.

**MORE FARMERS
and "TREE MEN"**

Use This
Mall MODEL 2MG
THAN ANY OTHER CHAIN SAW



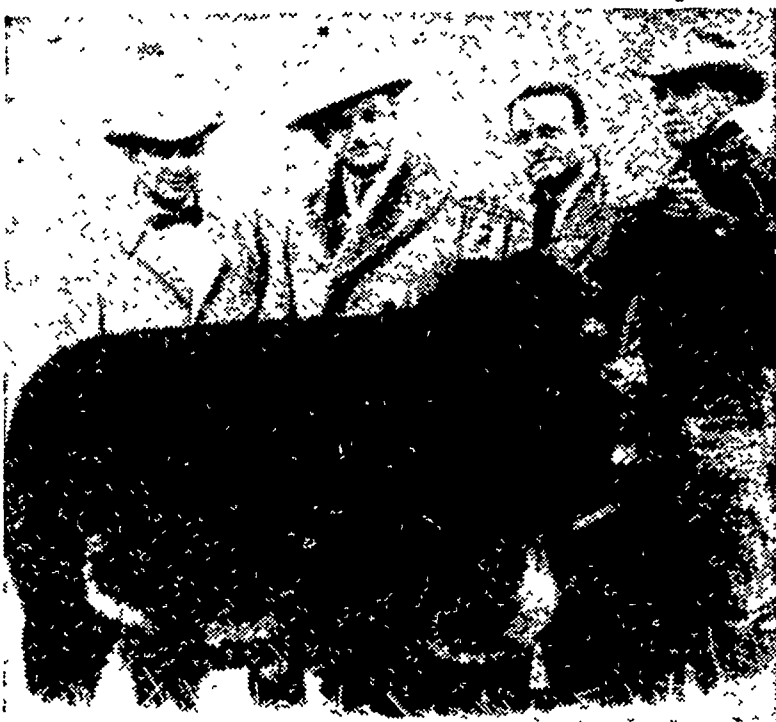
HERE'S WHY farmers, nurserymen, arborists and estate owners favor MALL 2MG over all other saws — It's faster, easier handling packs 5½ brake horsepower into a light but rugged 29 lb. unit. Swivels to cut at any angle with engine level, 18" to 54" bars. Falls up to 4½ ft timber. Come in... TRY IT!

Models Low As \$169.00

**Snavelly's Farm
Service**

Phone EL 4-2214
NEW HOLLAND

Penn State Steer International Champion



This is P. S. Troubador, the Shorthorn steer from the Pennsylvania State University herds named grand champion at the International Livestock Exposition, Chicago. He is scheduled to appear at the Pennsylvania Farm Show, Harrisburg, Jan. 14 to 18. Showing him are, (left to right), H. R. Purdy, W. L. Henning, G. R. Kean, and R. S. Sour, of the Department of Animal Husbandry and Agricultural Experiment Station. Dr. Henning, currently on leave, is State Secretary of Agriculture. Quality cattle, represented by Troubador, were made possible for use in teaching and research at the University by special funds appropriated by the General Assembly.

**High Cow, Herd Honors Awarded
At Pennsylvania Dairyman Banquet**

HARRISBURG — High milk and butter honors for cows and herds in dairy herd improvement associations in 1956 were announced Wednesday night at the annual Farm Show banquet meeting of the Pennsylvania Dairy-men's Assn. These included some all-time highs

H. C. Gilmore, extension dairy specialist, the Pennsylvania State

University, said a registered Holstein of Clarence Mowry & Son, Roaring Springs, RD, Bedford County, took individual honors in butterfat, with 1,107.9 pounds, a new state DHIA high, and also was high in the state in milk, with 25,804 pounds.

High herd honors in butterfat went to Clark Bowen, Wellsboro, whose 27 registered Holsteins averaged 663.8 pounds of fat and 16,704 pounds of milk. Nine DHIA herds exceeded 600 pounds of butterfat per cow, and 171 topped the 500-pounds average — a new high number in that category.

Breed association awards for high DHIA performance in butterfat included: Ayrshire — high herd and high individual cow, Abram J. Strite, Greencastle; Swiss — high herd, Charles Daubert, Jr., Pine Grove; Guernsey, high cow on three-times milking, Grace Farms, Patin, high cow on two-times milking, Dagostine Brothers, Sugarloaf; high herd of over 30 cows, Gene Harding, Brookville; high herd, 10 to 30 cows, Echo Valley Farm, Trucksville.

Holstein — Top registered herd milked three times daily, Lewis A. Zimmerman, Lehigh; top registered herd on two-times milking, Clark Bowen, Wellsboro; top registered and grade herds, three-times milking, Wesley Baxter, Fredonia, and twice milking, Ray M. Ard, Lewisburg; top individual cows, for three milkings, Pennsylvania State University, University Park; two milkings, Clarence Mowry & Son; top individual cows in milk, three times, Lewis A. Zimmerman, Lehigh; and two times, Clarence Mowry & Son, Roaring Springs.

Jersey — Top Jersey herd, Stanley L. Spencer, Newville; top cow, Vosburg Farm, Titusville; highest index proven sire, Western Pennsylvania Artificial Breeding Cooperative, Clarion.

**USDA Extends Time
To File Grading Views**

The U. S. Department of Agriculture has extended the time for filing views and comments on the proposed amendment of grades for frozen lima beans.

The proposed amendment was published in the Nov. 10, 1956, issue of the Federal Register.

In consideration of comments and suggestions received indicating the need for further consideration of the proposal by industry, notice is given of an additional period of time until Feb. 15, 1957, for filing data, views, or comments in connection with the proposed amendment of U. S. Standards for Grades of Frozen Lima Beans.

**Farm Women Societies Want
'Better, Cleaner' TV Programs**

HARRISBURG — "Better and cleaner" television programs and adequate school facilities were called for by the Society of Farm Women of Pennsylvania in resolutions adopted at its 38th annual meeting at the Pennsylvania Farm Show.

Another resolution urged the farm women to register for voting and to exercise their right of franchise.

Mrs. Herbert W. Rousch, Lebanon, was elected secretary to succeed Mrs. Ed. Boyd, Stoyestown. Mrs. Charles Shriver, Waynesburg, president, reported four new societies formed during the year and that paid membership

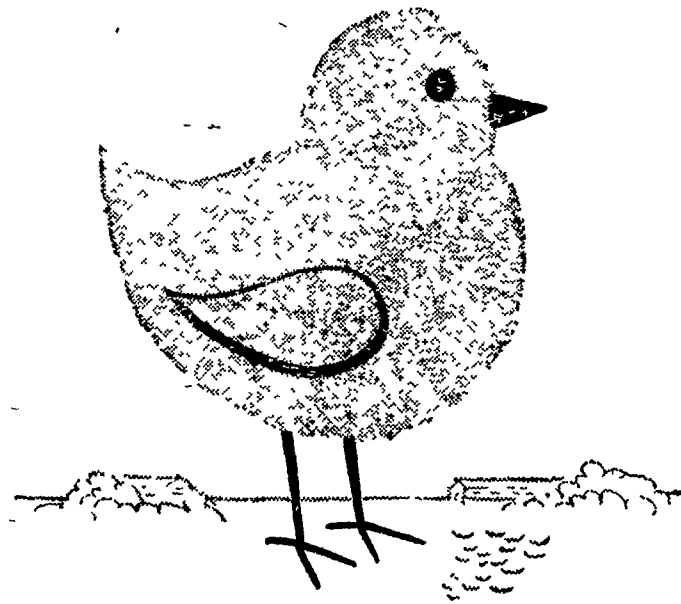
totals 3,260.

The Lancaster Holstein Quartet—John Stoner, R7 Lancaster; Raymond Denlinger, R4 Lancaster; Aaron Landis and Stanley Longenecker, R1 Strasburg, entertained at the morning session.

Other society offices are: First vice president, Mrs. Mark Herr, Collegeville; second vice president, Mrs. Ferd Bilde, Fayetteville; treasurer, Mrs. Milton Eberly, Elizabethtown.

Directors are Mrs. Harold Shrader, Johnstown; Mrs. George Gerberick, Dover; Mrs. Clayton Kahn, Shippensburg; Mrs. Edwin Paschall, R1 Kennett Square, and Mrs. D. L. Howard, Hummelstown. Mrs. Wesley Johnson, Waynesburg, is historian.

**BEACON COMPLETE STARTER
BEACON-TROLLED
FOR TOMORROW'S PROFITS**



Your future egg profits begin with your chick feeding program. This program, to be profitable, must be practical. It must protect your investment while building for the future.

Beacon Complete Starter and the Beacon Chick Program are based on the practical premise that properly developed chicks will become pullets able to produce heavily over a longer than usual laying period.

We call this program of chick development a *Beacon-trolled* Feeding and Management Plan. It lays the important foundation for *sustained* high production. It controls every stage of chick growth by giving you well-feathered chicks just as soon as bred-in characteristics permit; it builds strong bones, big frames, and the body capacity for heavy, high production. *Beacon-trolled* feeding proves itself—in the nest—as the practical way to build chick raw material into future egg profits. *Beacon-trolled* Feeding and Management assures you that when layers go on the nest they'll be physically equipped for long, profitable laying life.

LIVING PROOF—

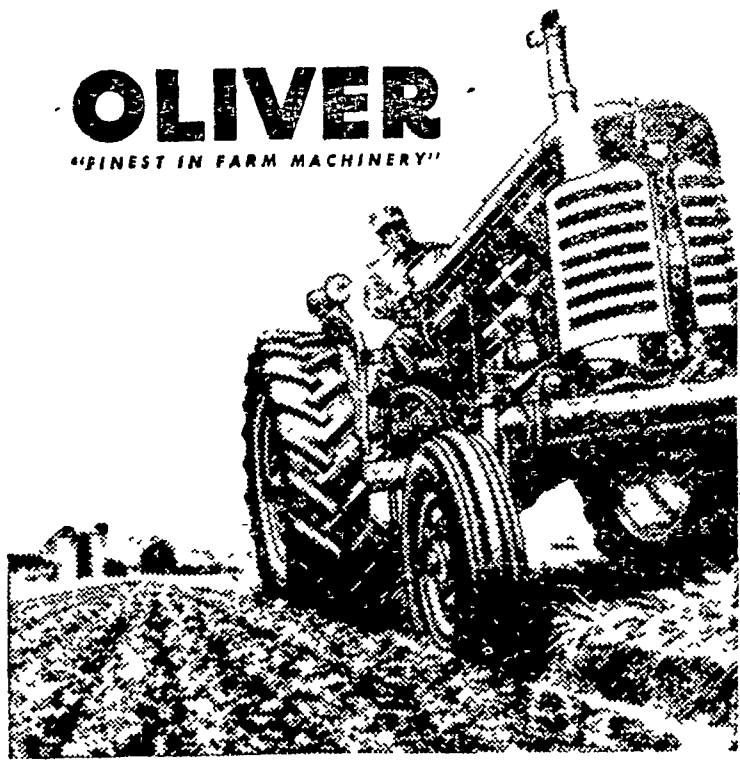
Continuing tests are run at Beacon's Poultry Research Farm, Cayuga, New York. Thousands of chicks like this one are started and grown yearly under commercial brooder house conditions. Results of these continuing tests keep the Beacon Program practical and efficient—prove the value of *Beacon-trolled* Feeding and Management for today's poultrymen.



BEACON FEEDS
ARE UNIFORMLY BETTER BECAUSE THEY'RE BEACON-TROLLED
Before manufacture During manufacture After manufacture

- | | |
|--------------------------------------------------------------------|-------------------------------------------|
| J. M. Bomberger
ELM | O. Kenneth McCracken
MANHEIM |
| Farmers Supply Co.
137-39 E. KING ST.,
LANCASTER | Millport Roller Mills
LITITZ |
| Paul H. Gehman
DENVER | Earl Sauder
NEW HOLLAND |
| Fred L. and John E. Homsher
STRASBURG AND
QUARRYVILLE | Osceola Flour Mills
GORDONVILLE |
| | Wenger's Feed Mill, Inc.
RHEEMS |

OLIVER
"FINEST IN FARM MACHINERY"



you save **2/3...**

...yes, you can put as much as two-thirds of your present tractor fuel bills back in your pocket if you switch to an Oliver Diesel Tractor. Oliver Diesels use lower-cost diesel fuel and give you more horsepower-hours per gallon. It averages out at about a two-thirds saving, depending on local fuel prices.

Only Oliver can supply you with diesel power in six farm tractor sizes. Oliver Diesel Tractors use no special starting fuels, no extra starting equipment. Touch the starter button and you are ready to work.

The over-all design of Oliver Diesels will please you. Some tractors have some Oliver features—no other tractor has all of them. See us for full details.

N. G. Hershey & Son
Manheim, RD. 1

Farmersville Equipment Co.
Ephrata, R.D. 2

Chas. J. McComsey & Sons
Hickory Hill, Pa.

E. L. Herr
Peach Bottom