

THIS CHART shows the general nature of the total precipitation which fell during the preceding 30 days. Precipitation is expressed in three classes: light, moderate, and heavy, and the precipitation amounts which determine these classes are ob-

tained from an analysis of many years of record at many stations. Like temperature classes, the numerical ranges, vary from place to place and month to month, are given on page 4 of the Outlook issued one month ago.

Educators charge that U. S. science training lags. Personal income rate continues to gain.

**WAS HE SATISFIED?**  
 "Daddy, if you give me a dime I'll tell you what the iceman said to mama."  
 "O.K., here's your dime."  
 "He said: 'Any ice today, lady?'"

### FHA Chapters Plan Farm Show Window Displays

HARRISBURG — Selection of Future Homemakers of America chapters in nine Pennsylvania high schools to prepare special window exhibits for display during the 1957 Pennsylvania Farm Show, Jan. 14-18, was announced Monday.

A special committee of homemaking education advisers selected nine schools from a total of approximately 35 that had submitted plans for exhibits illustrating some phase of homemaking activity in the school. The committee worked under the direction of Mrs. Cho Reinwald, chief of homemaking education, State Department of Public Instruction.

The nine special homemaking displays will be set up at the Farm Show flanking a similar number of exhibits prepared by Future Farmers of America chapters. The Farm Show Commission will provide \$820 in prizes. Top prize is \$60 in each division.

Future Homemaker chapters and topics chosen for their exhibits are:

Trinity High School, Washington, Pa., "Going My Way," dress accessories.

Rush High School, Montrose, "The Future is in Your Hands," illustrating the 1956-57 theme for Future Homemakers of America. Cumberland Valley High School, Mechanicsburg, "Textile Painting," showing a variety of decorated skirts.

James Buchanan High School, Mercersburg, "Are You Ready," civil defense.

Catawissa High School, Columbia County, "The Old With the New," a home furnishing contrast.

Blue Mountain Joint High School, Cressona, Schuylkill County, "Choose Wisely," buying small electrical appliances.

Meshoppen High School, Wyoming County, "From the Attic to the Bedroom," transformation of an old chair.

Middleburg Area Joint High School, Snyder County, "Watch Your Step," food selection.

Berwick High School, Columbia County, "As the Twig is Bent," how to live graciously.

Two exhibits were selected to be held in reserve in case an emergency prevents any of the other schools from placing their exhibit. They are Danville High School, Montour County and Falls-Overfield High School, Mill City, Wyoming County.

Leaders of organized labor said that their political efforts had been more fruitful in this election than in 1952.

### Three Counties Brucellosis-Free In Pennsylvania

HARRISBURG — Three more counties have been added to the State's honor roll of certified brucellosis-free areas, State Agriculture Secretary William L. Henning announced today.

Counties that bring the certified total to 45 out of the State's 67 counties are Erie, Snyder and Warren.

Each has achieved highest recognition in the Commonwealth's 34-year battle against the most bothersome of all cattle diseases—certification from the state and federal departments of agriculture.

Secretary Henning expressed renewed hope that the entire State will be certified as free of brucellosis or Bang's disease by early 1958.

"We are receiving excellent cooperation from herd owners and veterinarians in cattle testing and in calfhood vaccination," Henning declared.

To become officially certified as brucellosis-free, incidence of the disease within a county must be reduced to less than 5 per cent of all herds and 1 per cent of all dairy and beef breeding cattle.

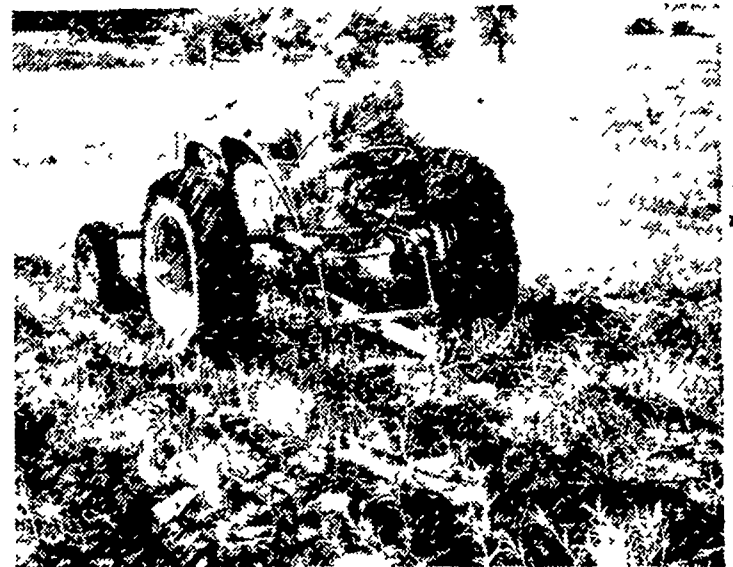
### IT'S AN ILL WIND

HINTON, Okla. — Three blacks of Main Street here were accidentally paved recently. A truck, loaded with 4,000 gallons of hot asphalt, overturned in the business district. City officials promptly threw in some sand and spread the mixture evenly over the thoroughfare.

An outstanding control record was achieved in Erie County, Department records show. When the first county-wide test was completed in 1954 more than 20 per cent of the herds and 5.4 per cent of the cattle were infected with brucellosis. This has been reduced to 2.3 per cent of the present 2,362 herds and .36 of 1 per cent of the 31,229 cattle participating in the certification test.

In Snyder County the first complete test early this year showed 11.3 per cent of herds and 3.56 per cent of cattle infected. It is now down to .98 of 1 per cent of the 1,012 herds and .15 of 1 per cent of the 9,474 cattle in the county.

Initial tests in Warren County showed 19 per cent of herds and 6.3 per cent of cattle infected. The latest test shows only 3.4 of the 1,038 herds and .53 of 1 per cent of the 15,436 cattle infected.



Allis-Chalmers subsoiler shatters 18 inches deep.

### More Power for Saving Your Soil with Allis-Chalmers



Blade reverses, leans forward or back for penetration.

Soil conservation . . . better use of soil and water . . . means more money in your pocket . . . more value in your land. Build your own terraces, dams, waterways . . . and do your own subsoiling . . . with your own convenient Allis-Chalmers equipment.

Why not visit us right away? Get ready now with low-cost Allis-Chalmers equipment for low-cost soil conservation work.

### ALLIS-CHALMERS

SALES AND SERVICE

Mann & Grumelli Farm Serv. R. S. Weaver  
 Quarryville, Pa. Stevens, Pa.

L. H. Brubaker  
 Lancaster, Pa.

Snavelys Farm Service  
 New Holland, Pa.

N. G. Myers & Son  
 Rheems, Pa.

L. H. Brubaker  
 Lititz, Pa.

**LOANS**  
 For any farm purpose  
 Made the farmer's way  
**LANCASTER PRODUCTION CREDIT ASS'N.**  
 36 E. Chestnut St.  
 Lancaster, Pa.  
 Ph. Lanc. EX 3-3921

**DE-STROY**  
 the PROVEN Rat Killer  
 with **WARFARIN**  
  
 NOW ONLY \$1 per lb  
 MONEY-BACK GUARANTEE  
 Mouse Size 99c - 3 lbs. Size \$2.75  
**L. H. BRUBAKER**  
 (2 Stores to Serve You)  
 Lanc. R. 4 Lititz R. 3

**NOW! BIG SAW FEATURES IN LITTLE GIANT CHAIN SAW**  
  
 Model 1MG  
 Here is BIG saw dependability and staying power in a low cost, lightweight 3 1/2 brake horsepower saw. Ideal for farm woodlot and production cutting. Takes 18" to 42" bars.  
 Models low as \$169.95  
**Snavely's Farm Service**  
 Phone EL 4-2214  
 New Holland

Here is the **NEWEST**  
**Way to Treat CRD**  
 Simply Dust Your Flock With  
  
**Dry-Strep-Spray**  
 (DIHYDROSTREPTOMYCIN SULFATE, VETERINARY)  
 Convenient, effective, and economical treatment of CRD (Chronic Respiratory Disease) or AIR SAC INFECTION in chickens. For less than one cent a bird, YOU can treat your flock. Most effective if caught in the early stages.  
 Ask for it by name **Dry-Strep-Spray**  
 At your local **Feed Dealer**  
 DISTRIBUTED BY  
**New Holland Supply Co. Ph. EL4-2149 New Holland**