

### Grading, Inspection Rules on Poultry Might Be Changed

Regulations governing the Federal grading and inspection programs for poultry would be changed in an amendment proposed today by the U. S. Department of Agriculture.

The more important of the changes under consideration include: (1) a change in the definition of "ready-to-cook poultry" requiring the removal of kidneys; (2) the addition of a requirement that licensed graders be Federal or State employees; (3) the inclusion of a provision to permit the use of limited-licensed graders working under the immediate supervision of a licensed grader; (4) the listing of specified prohibited acts (connected with employees of the service) which would be grounds for denial of service.

### DEPENDABLE SERVICE



### GARBER OIL COMPANY

Mt. Joy, Pa. Phone 3-9331

### International Champion Angus Heifer



The grand champion Aberdeen-Angus female at the 1956 International Livestock Exposition in Chicago is Bordulac Burgess 2nd Bee Mac, senior yearling entry of Heckmere's Highlands, Valencia, Pa. Shown with her in the picture from left to right are Herman Purdy, Pennsylvania

State University, judge of the Angus breed show; Mrs. E. H. Heckett, owner of the Highlands herd; Woodroe Adams, herdsman; Don Schmidt, cattle manager; and Ed Fowler, at halter. The female classes were judged November 27. (Photo by American Angus Association).

The Nobel Prize in physics was awarded to three Americans who worked as a team in developing the transistor for Bell Laboratories.

### One in Ten of Us Gets at Least One Cold Per Season, It Is Said

Over ten per cent of the United States population suffers at least one cold per "season" — a total of over 130 million cold sufferers annually. This is according to officials of Grove Laboratories, Inc., the world's largest manufacturer of cold tablets.

The common cold is a year around disease, however, it reaches a peak outbreak three times each year. The first high point results from the sniffles and sneezes occurring between mid-September and the end of October. The second, and most severe, takes place between early January and mid-February, while the third occurs from late March to late April.

The latest treatment of a cold's citrus bioflavonoids coupled with vitamin C. Amazing results with this drug have been accomplished. The relief is noted in these three days. First, the prompt or gradual subsidence of the usual symptoms of the common cold; next the degree of im-

provement reported by the patients and the evident remission of his symptoms up to and on the third day after medication; the patient feels much relieved in a general way, whether complications ensued.

Even young children can be given the new bioflavonoids and benefit.

There is still a great deal of work to be done in this field — However, it is a major medical discovery and may some day completely control the common cold.

### By 1957 Consumption Of Tree Nuts Might Exceed U.S. Supply

Washington, (USDA) — By 1975 the consumption of tree nuts in the United States is likely to exceed present supplies, according to a marketing research report just released by the U. S. Department of Agriculture. Along with the rise in consumption, production is also expected to increase.

If per capita consumption of tree nuts remained at 1955 levels, population increases alone would insure an annual domestic consumption of over 300 million pounds, shelled basis, by 1975. However, per capita consumption of tree nuts is expected to increase due to improved marketing methods and increased consumer education concerning use of nuts in main course dishes as well as in desserts and confections.

The effect of tariffs on imports of tree nuts and on domestic nut prices, the channels of tree nut distribution and the effect of current market prices on future supplies were among the problems studied.

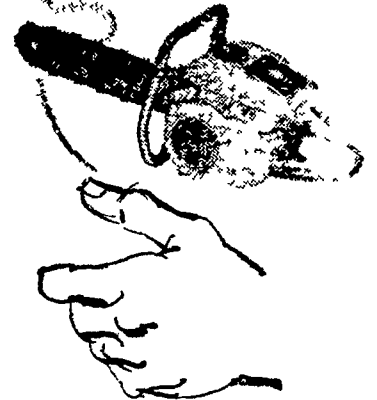
### BITES DOG CATCHER

HUNTINGTON PARK, Calif. — A jury couldn't agree recently on whether Mrs. Margie Gomes, 26, was guilty of battery for biting a dog-catcher. The dog-catcher, Donald Baird, testified she bit him on the arm as he was trying to snare her beagle pup. Mrs. Gomes said Baird twisted her around and shoved her against the back door of the truck, so she bit him. A new trial was set.

### NO SIGN

There is still no sign of a general reduction in rail fares. But plans are believed to be well in hand to prolong journeys, and so give better value for money. — Punch.

### Light Touch IN PRICE NEW McCULLOCH DIRECT-DRIVE D-44



Take a good look at the McCulloch D-44... test it for balance, see how easily it cuts, how little it weighs. Then, check the price of this tough, speedy little saw and you'll agree it's a real buy!

Easily Outperforms All Other Direct-Drive Saws!



**MAST** Saw and Knife Service

605 Marietta Ave. Lancaster Ph. EX 24291

Serving Lancaster County Since 1841

IF YOU HAVE A FARM PROBLEM CONSULT THE "COUNTY BANK"

STANLEY M. MUSSELMAN,

Manager of Our Farmer Relations Department, At Your Service.

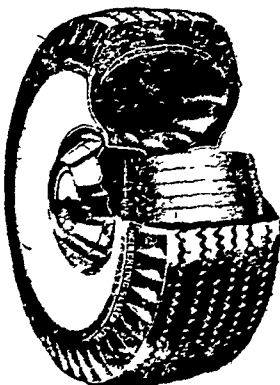


The Lancaster County National Bank  
23 E. King St — Cor. Prince and James Sts. — 138 N. Queen St.  
Member Federal Deposit Insurance Corporation

### H. M. KRADY

Distributor For

### SEIBERLING SAFETY TIRES



Let Us Handle Your Tire Problems

AUTO TRUCK

Tractor Tires Recapping

WRITTEN GUARANTEE ON ALL SEIBERLING TIRES

Phone EX 2-9507  
608 N. Prince St.  
Lancaster, Pa.

### New Holland Business Assoc.

MEMBERS WILL BE OPEN

Mon., Tues., Wed., Thurs., Fri., and Sat.

Dec. 17, 18, 19, 20, 21, and 22

In The Evenings Until 9 P. M.

AND CLOSE MONDAY EVENING

DECEMBER 24TH AT 6 P. M.



THE EMBLEM OF QUALITY and SERVICE

### Wolgemuth Bros., Inc.

Florin, Pennsylvania

Phones: Mount Joy 3-9551 and 3-8311