

Broilers Thursday Move Higher to 18.9 Average, Year Ago Avg. 20.95

Lancaster Poultry Exchange (Rohrerstown, Pa.) (Sales Report, Sale 188, Thursday, Nov. 15, 1956) — Additional gains were scored by broilers in the Thursday, Nov. 15, 1956 auction of 20 lots, 53,925 birds on the Lancaster Poultry Exchange.

Listed were 25 lots, 56,550 birds, offered were 23 lots of a total 57,725. Fourteen lots, 48,475 broilers, sold from 18 to 19 cents, averaging 18.90. One lot, 400 heavy fowl, brought 16 cents, one lot of 700 leghorn fowl 11½ cents, one lot of 900 heavy capettes, 25.25 cents, one lot of 950 capettes 28, and two lots totaling 23.75 cents.

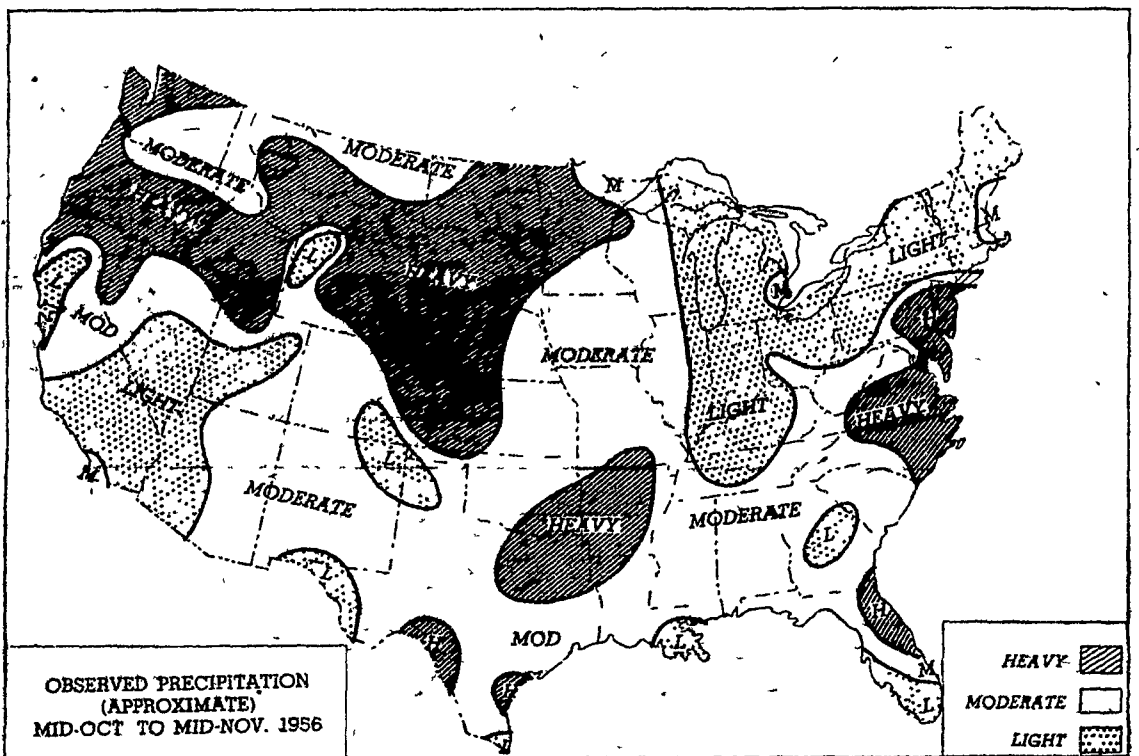
For the corresponding sales a year ago, Tuesday, Nov. 15 and Thursday, Nov. 17, Sales 100 and 101 in 1955, offered

were 53 lots, 167,380 birds including turkeys, sold were 37 lots, 108,910 birds including 1000 turkeys, with Tuesday prices from 20.25 to 22, averaging 20.95, and Thursday prices from 18.25 to 21.25, averaging 20.48, a two-cent decline for the week.

Prices last Thursday were up .8 of a cent from the previous Thursday's auction.

Here are Thursday, Nov. 15, 1956 sales, listed by lot number (each preceded by 15-), seller and grower, amount and breed, age by weeks and days, buyer and price

1, Kenneth McCracken (Merwin Hess), 600 Barred Cross pullets, 18 wks. withdrawn prior to sale, 2, Roy B. Erb, 400 New



This chart shows the general nature of the total precipitation which fell during the preceding 30 days. Precipitation is expressed in three classes light, moderate, and heavy, and the precipitation amounts which determine these classes are obtained from an analysis of many years of record at many stations

ALTMAN'S SUPER-A FEEDS

are timed-tested, scientifically balanced, vitamin complete and are manufactured daily in three modern plants. Compare our prices

Gloves 35c	\$1.50	Horse Feed	4.20
Pastry Flour	1.60	O F Hog Feed	4.50
Stazdry	2.25	15% Hog Feed	3.65
Peat Moss	4.20	16% Dairy Feed	3.40
Water Softener	\$2.15	Fitting Ration	3.55
Barn Snow (sack)	.88c	Production Egg Mash	4.25
Salt Med. 100 lbs	2.15	Quality Egg 4.00 D.P.	4.10
Salt (block 50 lbs) 85c	1.30	Bluebird Egg	3.85
4 lb Salt Bricks 18 c	.23c	Scratch 380 D P	4.00
Oats 80 lbs	3.30	Corn	3.55

SPECIAL CHOP FOR STEERS & HOGS WE DELIVER 3 20

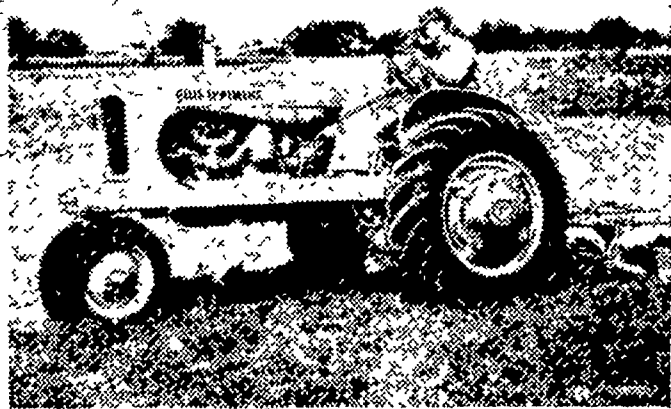
ALTMAN'S CASH FEED STORE

WILLIS H. WEAVER MANAGER

947 Harrisburg Ave. Phone Lanc. EX 4-7715

10c per hundred discount on half ton lots or more.

PRICES SUBJECT TO CHANGE



BUY TIME for Wise Buyers
... is NOW.

Thinking about a new tractor? Other new machinery? Then this fall is the time to buy it... to finish fall plowing before winter sets in... to be ready to go fast when the spring rush begins.

Whether your choice is the big 4-pow, 4-row WD-45 or the 2-row CA Tractor, you'll be happy with added work power and the cost-saving convenience that Allis-Chalmers Engineering in Action can give you.

Standard equipment on both WD-45 and CA includes:

- TRACTION BOOSTER system
- SNAP-COUPLER hitch
- Power-Shift wheels
- Two-Clutch Power Control
- Complete Hydraulic system

Decide now on a new Allis-Chalmers Tractor. You'll be glad you did.

TRACTION BOOSTER and SNAP COUPLER are Allis-Chalmers trademarks.

ALLIS-CHALMERS 
SALES AND SERVICE

Mann & Grumelli Farm Serv. R. S. Weaver
Quarryville, Pa. Stevens, Pa.

L. H. Brubaker Snavelys Farm Service
Lancaster, Pa. New Holland, Pa.

N. G. Myers & Son L. H. Brubaker
Zheems, Pa. Lititz, Pa.

Lancaster Livestock: Choice, Prime Steers About Steady, Others Lower

By DAVID S. LORENSON
USDA Market News Service

WEDNESDAY TO
WEDNESDAY REVIEW

LANCASTER, NOV. 21

(Weekly Review) USDA —

CATTLE Three day receipts 4,739, week ago 3,851. Compared with last Wednesday, slaughter steers high choice and prime about steady, standards to average choice 50-75 cents lower. Heifers about steady, cows fully steady and bulls mostly steady. Stockers and feeders steady to 50 cents lower, most decline on feeding steers 300-lbs and over. The supply was comprised of around 70 per cent stockers and feeders and 10 per cent cows. Balance mainly good and choice fed steers except for moderately supply of bulls and heifers. Prime fed steers scarce. Bulk choice fed steers \$23.00-25.50, one load 1076-lb prime steers \$29.00. Good and low choice steers \$20.00-22.50, some standard down to \$17.00. A few small lots standard to good heifers \$15.50-19.00. Most utility and commercial cows \$11.00-13.50, canners and cutters \$8.00-11.75. Utility and commercial bulls \$14.75-17.25, good fed bulls \$21.00, cutter grades down to \$12.50. Bulk medium and good stock steers 750 lbs and lighter \$16.00-19.00, common stock steers \$12.50-14.75. Most medium and good 800-1000 lb feeding steers \$17.00-19.50, load 860 lb fleshy feeding steers \$20.25 and one load partly fattened high good feeder steers \$21.00.

CALVES: Three days, 834, week ago 934. Vealers about steady with last Wednesday. Bulk good and choice vealers \$21.00-27.00, high choice and prime \$27.50-31.00, utility and standard \$14.00-21.

HOGS: Three days 1,069, week ago 1,325. Compared with last Wednesday barrows and gilts around 25 cents lower, sows

scarce about steady. Bulk barrows and gilts U. S. mixed 1-3, \$16.00-16.50, a few sales around 220-250 lbs No 3 down to \$15.75. Several lots mostly No 1 and 2, 200-220 lbs \$16.75-17.00 and a few was high as \$17.50 to local small killers. Weights 250-270 lbs \$15.25-16.00, some around 160 lbs down to \$15.25. Sows all weights U. S. mixed 1-3, \$12.50-14.50.

SHEEP 432, week ago 355. Supply mainly wooled slaughter lambs. Compared to last Wednesday slaughter lambs mostly steady. Bulk good and choice lambs \$18.50-22.00, a few choice to \$22.50; utility and low good grades \$14.50-18.00.

ettes, 13-2, to Harry H. Weaver, Jr., 23.75¢; 11, Miller & Bushong (Charles Boose), 1500 White Rock capettes, 13-2, to Harry H. Weaver, Jr., 23.75¢; 12, Miller & Bushong (Alfred Fisher), 2700 White Vantress, 9 wks, to C. F. Manbeck, Inc., 19¢, 13, Miller & Bushong (J. Lester Buckwalter), 600 White Vantress, 9 wks, to C. F. Manbeck, Inc., 18.75¢; 14, Miller & Bushong (J. Lester Buckwalter), 600 White Vantress, 9 wks, to C. F. Manbeck, Inc., 18.75¢; 15, Miller & Bushong (Jacob C Herr), 4000 White Vantress, 9-2, to Walter C Mellinger, 19¢; 16, Henry Longenecker, 1850 White Vantress, 9 wks, to Walter B. Lehman, 19¢, 16A, Henry Longenecker, 1650 White Van-

(Continued on page 3)

KILL CHICKWEED
in Alfalfa, Clover
and Strawberries
with

CHLORO I. P. C.

—Use one 1/2 quarts per 30-100 gallons of water.

—Spray when temperatures are below 50 degrees—but not below freezing.

Highly recommended by Agricultural Authorities.

P. L. ROHRER & BRO. INC.

Smoketown, Pa.

Ph. Lanc. EX 22659

FREE... FREE... FREE

150 McCULLOCH

D-44 Direct-Drive

Chain Saws to be given away free!

Absolutely nothing to buy!

See Us Today For Details of the exciting
MCCULLOCH SAW-DRAW

CONESTOGA FARM SERVICE

Quarryville Ph. 282