

Lancaster County Baby Beef Round-Up Winners

Listed below are winners of the Lancaster County Baby Beef Roundup that brought a total of 124 entries to Union Stock Yards, Lancaster, Tuesday.

Winners whose place numbers bear an asterisk (*) will show at the Farm Show in Harrisburg next January.

SHORTHORNS

Judge Dwight Younkin, University of Pennsylvania

Lightweight 1, Shirley Long-124 entries to Union Stock Yards, enecker, R2 Lititz, 2, Mary Louise Miller, R2 Manheim; 3, Elwood Pfaumiller, R3 Elizabethtown, 4, Bruce Boyd, R1 Ephrata

Heavyweight 1, Ned Bushong, R1 Lititz, 2, Jean Boose, R5 Lancaster; 3, Kenneth Miller, R2 Manheim, 4, Betty Jane Long-enecker, R2 Lititz.

HEREFORDS

Judge Thomas W. King, livestock extension specialist, the Pennsylvania State University

Lightweight: *1, James Gible, R3 Elizabethtown; 2, Janet Frey, R1 Lancaster; *3, Joanne Foreman, R3 Manheim; 4, Tom Daugherty, Kirkwood; 5, Mervin Skiles, R2 Narvon.

Mediumweight: *1, Dennis Sangrey, R2 Conestoga; 2, Joanne Shenk, R3 Manheim; 3, Fred Barnhard, R2 Mt. Joy; 4, Leona Augsburger, R1 Reinholds; 5, James Nolt, R1 Reinholds

Heavyweight *1, Christ Miller, R2 Elizabethtown; 2, Judy Daugherty, Kirkwood; 3, James Groff, R7 Lancaster, 4, Walter Augsburger, R1 Reinholds; 5, Gloria Brubaker, R1 Ephrata.

Light Heavyweight: *1, Joyce Nolt, R1 Reinholds; *2, Peggy Hackman, R3 Elizabethtown; 3, John Henry Hess, R1 Manheim; *4, Doris Shenk, R3 Manheim; 5, Carl Bollinger, R1 Lititz.

ANGUS

Judge: Prof. Herman Purdy,

department of animal husbandry, the Pennsylvania State University

Lightweight 1, Heibert Frey, Running Pump Road, Lancaster, 2, Robert Becker, R2 Mt. Joy; 3, Kenneth Rutt, Peach Bottom, 4, James Bowman, R1 Ronks, 5, Gloria Kreider, R1 Strasburg

Mediumweight 1, Sam Long, R3 Manheim, 2, Donald Rutt, Peach Bottom, 3, James Hess, R1 Manheim, 4, John Zimmerman, R1 Reinholds, 5, Darwin Boyd, R1 Ephrata

Light heavyweights 1, Glenn Foreman, R3 Manheim, 2, Verna Landis, R4 Lancaster; 3, Dorothy Stehman, R3 Lancaster; 4, John Marsh, R1 Kinzer, 5, Lorraine Hackman, R3 Elizabethtown.

Heavyweight *1, Henry Greiner, R4 Manheim, *2, Robert Gible, R3 Elizabethtown, *3, Marian Graybill, R3 Manheim; 4, Donald G. Herr, R2 Quarryville, 5, Jean Graybill, R1 Manheim.

Game Commission Opens New Offices

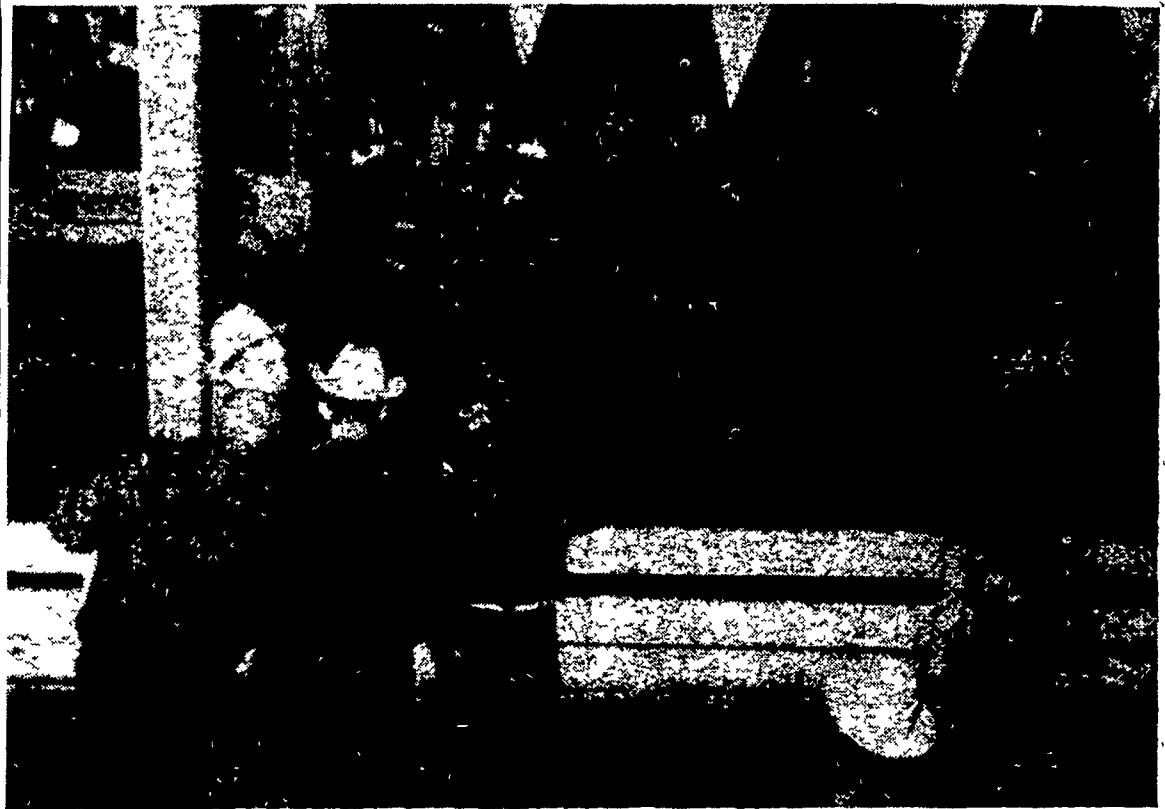
The Game Commission's Southwest Division office staff was recently moved into another building in Ligonier. The new office was established in the one-time passenger station of the Ligonier Valley Railroad. The property, one acre in size, is beautifully landscaped.

The Commission remodeled the station building, a large, substantially-built structure, to provide adequate office space for the staff on the ground floor. The second floor now provides six storage rooms and a large conference room.

The former freight station is being used to store Commission equipment, grains and lime.

This division headquarters, one of six in the state, is the only one owned by the Commission.

Ringside Bidders



STANDING AT RINGSIDE, talking with Scott L. French, fieldman for the Pennsylvania Angus Breeders Association, are Fred Frey (with hat) and his brother Ernest, R2 Quarryville, high bidders in the

Saturday feeder calf auction at the Lancaster Stock Yards, paying 50 cents a pound for the top animal (Lancaster Farming Staff Photo).

Frey Brothers Buy Top Steer

(Continued from page one)

the Frey bid topping the \$42 paid last year in the first annual sale. The sale totaled \$34,052.37, and each lot averaged 478 lbs.

First eight lots, all Angus, averaged \$33.68 cwt on individuals. Lester B. Good, R1 East Earl, took the first fancy Black, a 525-pounder at \$35 cwt; Ronald Book, R7 Lancaster had the winning bid on lot 2, a 425-lb steer, at \$31.50. Gene Hoover, R3 Lititz, took the fourth lot at \$32.

Five fancy Herefords averaged \$27.25, selling at a \$28 top, with the bulk at \$27. Shorthorns averaged \$25.44 in the three fancies offered.

Fifteen fancy calves, all breeds, averaged 473 lbs and averaged \$30.68 cwt; 97 choice calves figured \$25.06 cwt, weighing 486 average; 90 good calves scaled an average of 465 lbs and figured \$23.28. In the heifer division, 42 choice scaled an average of 473 lbs and figured \$18.90; forty-two good heifer calves averaged 460 lbs and \$16.69.

Frey Bros. were contenders on the second high of the sale, a fancy 440-lb Angus that finally was sold at \$38 cwt to Quisenberry Farm of York County.

J. A. Mays, Clarion, Pa., was one of the outstanding buyers of the day, taking a total of 31 head.

Many sales were made into Lancaster County, to Elmer Boyd of R1 Ephrata, a fancy 440-lb Angus at \$27 cwt, to Lester Weaver, R1 New Holland, a lot of 13 choice Angus at \$26; and to Roy Buch of Lititz, a 635-lb Angus at \$23.75.

Leon Falk, Jr., of Falklands Farms, Pittsburg, president of the Pennsylvania Livestock and Allied Industries Association, extended greetings prior to the sale. Sponsors included the Lancaster Live Stock Exchange and the Union Stock Yards Co., of Lancaster, with the association.

In the first sale, Nov. 5, 1955, a total of 319 head were sold, including 87 heifers. Twenty-five fancy steers averaged \$29.80 last year, 87 heifers \$16.19, and all grades \$24.70.

Other representatives at the sale included Scott L. French of the Pennsylvania Angus Breeders Association, and Thomas W. King, livestock extension specialist of the Pennsylvania State University. Greetings were also extended by the Stock Yards Co.

Alfred M. Gruenther, General, retiring Supreme Allied Commander in Europe: "The present Russian 'dictatorship' is as unhurried as it is relentless."

Inspection Required On Christmas Trees In Gypsy Moth Area

WASHINGTON — (USDA) —

The U. S. Department of Agriculture reminds dealers and the public that, because of the gypsy moth, Christmas trees and evergreen boughs from Connecticut, Rhode Island, Massachusetts, most of New Hampshire and Vermont, and numerous counties in Maine and eastern New York require Federal inspection and certification before they are moved to areas not infested by this forest insect.

Reason for the inspection is that Christmas trees and greens may carry over-wintering, buff-colored egg clusters of the gypsy moth, which could be the source of new infestations of this destructive pest of forest, shade, and fruit trees. Gypsy moth caterpillars devour tree leaves and can defoliate entire forests. The insect destroys about \$1 million worth of trees a year.

The Department asks the public to cooperate in preventing spread of the moth and urges all shippers to secure certification of trees and green at loading points, where it can be done with a minimum of delay.

Deadline Dates For Farm Show

(Continued from page 1)

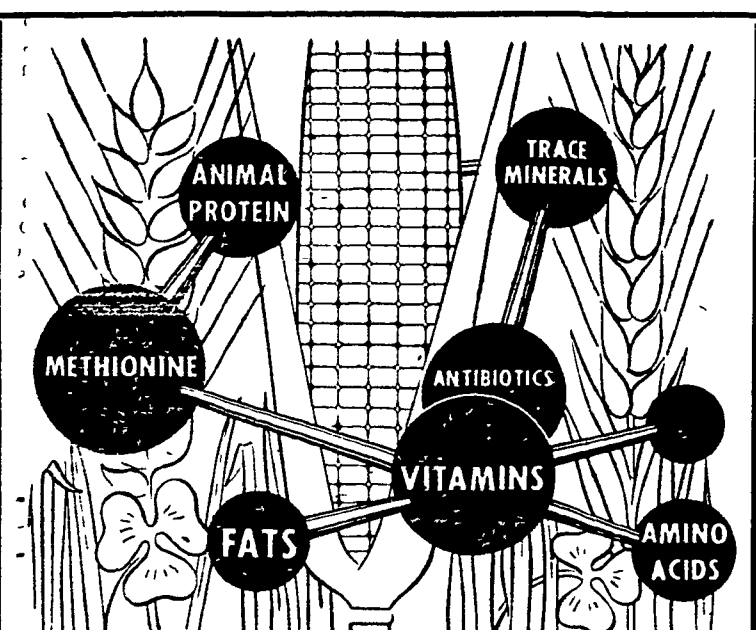
Vocational and 4-H poultry entries are due Dec. 1 and the deadline for turkeys, roiler, roaster and caponette chickens is Dec. 17.

Entry notices for vocational agriculture and homemaking window exhibits are due Nov. 12. Two days later, Nov. 14, the homemaking demonstration entries are due. Schools entering the vocational agriculture demonstration contest must be on file by Dec. 1. Future Farmer and 4-H tractor driving contest entries must be filed by Dec. 8.

Notice of entry of collective or county exhibits of honey and beeswax must be filed by Dec. 1. Deadlines for entries in other competitive displays for the 1957 Farm Show fall during the week prior to the opening of the exposition. All dates are listed in the 1957 Premium List.

E. LaVerne Mull Is Now Junior Member Of Guernsey Club

E. LaVerne Mull, has been accepted as a junior member of the American Guernsey Cattle Club. The junior membership will be in effect until Mull reaches the age of twenty-one.



You can't grow all the nutrients your poultry need

Make home-grown feed a complete ration with Red Rose Poultry Supplements. Red Rose 36% Poultry Supplement, 40% Starter-Broiler Supplement and 32% Breeder Supplement are concentrated sources of essential ingredients that combine with your grains to make complete, balanced, high-production rations. You get higher egg production... faster growing birds with a high quality finish. For more poultry profits, use Red Rose Poultry Supplements.

Red Rose Poultry Supplements

- | | |
|--|---|
| MOUNTVILLE FEED SERVICE
R.D.2 Columbia, Pa. | JOHN H. BONHOLTZER
R.D.4 Lancaster, Pa. |
| LEROY GEIB
R.D.2 Manheim, Pa. | SNADER'S MILL
R.D.1 Stevens, Pa. |
| FAIRVIEW ROLLER MILLS
R.D.1 Narvon, Pa. | JOSEPH M. GOOD & SON
R.D.1 Bird-in-Hand, Pa. |
| I. B. GRAYBILL & SON
Refton, Pa. | WALTER & JACKSON, INC.
Christiana, Pa. |

For Souder Roots... For Healthier Plants... For Finer Crops...

- Use Nature's Own Neutralizer
- 97% Pure Belmont Limestone —
 - ★ 20% Magnesium Oxide... the mineral base of Chlorophyll
 - ★ 30% Calcium Oxide... nature's own Root builder
 - ★ 57% Calcium Equivalent — making a superior neutralizer.

KILN-DRIED FOR LOW MOISTURE CONTENT

— SOIL TESTING SERVICE —
— EVEN SPREADER SERVICE —

DAVID B. JOHNS
Ronks, Ph. Strasburg OV7-3301

Wenger & Sensenig Co.

R. D. No. 1, Paradise, Pa. Ph. Gap HI2-4500