

LANCASTER MARKETS

Lancaster Broilers Thursday Drop Again; 16.08 Cents Three-Year Low

Lancaster Poultry Exchange (Rohrerstown, Pa.) (Sales Report sale 186, Tuesday, Nov. 1, 1956) — Broiler prices on the Lancaster Poultry Exchange Thursday, Nov. 1 dropped to a three-year low in average prices, with heavy receipts bringing an average of 16.08 A year ago the average was 18.54 cents

Listed Thursday were 59 lots, 227,750 birds, offered were 58 lots, 227,450, and sold were 214,200 in 54 lots. Forty-eight lots, 211,650 broilers, sold from 15.25 to 17 cents, averaging 16.08, two lots, 625 Leghorn fowl, brought 10.50, one lot of 350 capettes sold at 19, one lot of 1,000 New Hampshire cockerels brought 12.50, one lot of 500 heavy fowl sold at 15.75 and one lot, 75 bronze turkeys, brought 24.50 cents per pound.

For the corresponding day a year ago, Thursday, Nov. 3, 1955, sale 97, offered were 53 lots, 153,445 birds, sold were 51 lots, 151,285 birds at 15 to 19.25 cents, averaging 18.54, low for the year.

Receipts were extremely heavy, just 10,000 short of the record for one week at the Lancaster Exchange

Topping the market was John Rettinger, Halifax, in buying 1000 White Vantress, 10 wks, 3 days, grown by Elam S. Glick, Bareville

Here are Thursday, Nov. 1, 1956 sales by lot number, seller with grower shown in parentheses, amount and breed, age by weeks and days, buyer and price

1, Miller & Bushong (Paul

LANCASTER BROILERS

Wertz), 1000 White Vantress, 10-6, to Ray W. Gible, 16¢, 2, J. W. Eshelman & Sons (Red Rose Research), 75 Broad Breasted Bronze turkeys, 24 1/2 wks, to Grimes & Hauer, 24.5¢, 3, Miller & Bushong (Roy B. Martin), 5000 Indian Rivers, 10 wks, to Victor F. Weaver, Inc., 16.25¢, 4, Miller & Bushong (Roy B. Martin), 5000 Indian Rivers, 10 wks, to Victor F. Weaver, Inc., 16.25¢, 5, Miller & Bushong (Roy B. Martin), 12,000 White Vantress, 9-2, to Victor F. Weaver, Inc., 16¢, 6, Allen E. Moyer, 1200 Red Vantress, 10 wks, to Roy E. Ream, 16.5¢, 7, Allen E. Moyer, 100 White Vantress, 10-3, to College Hill Poultry, 16¢, 8, Wenger's Mill (V. B. Hilsher), 1000 White Vantress, 11 wks, to Meader's Poultry, 16¢, 9, Wenger's Mill (David Heisey, Sr.) 2000 White Vantress, 10-6, to Walter B. Lehman, 16.25¢, 10, Wenger's Mill (David Heisey, Jr.) 2100 Red Vantress, 10 wks, no sale, 15.75¢ bid,

11, Dale King, 9000 White Vantress, 9-6, to Victor F. Weaver, Inc., 16¢, 12, Eugene Schlosnagle, 8400 White Vantress, 9-2, to Grimes & Hauer, 16¢, 13, Eugene Schlosnagle, 8400 White Vantress, 9-2, to Grimes & Hauer, 16¢, 14, John W. Wall, 4800 White Cornish Cross, 11 wks, no sale, 16¢ bid; 15, Clayton H. Shenk, 1200 White Vantress, 10-2, to Meader's Poultry, 15.75¢;

16, Irvin W. Weaver, 300 Leghorn fowl yearlings, to Carl B. Rasser, 10.5¢; 17, Robert Neff, 600 White Mountains, 9-6, to Roy E. Ream, 15.5¢; 18, Elam S. Glick, 1000 White Vantress, 10-

3, to John E. Rettinger, 17¢, 19, Stegemerten's, 6000 Indian Rivers, 10 wks, no sale, 14.5¢ bid, 20, Stegemerten's, 300 White Cross capettes, withdrawn prior to sale,

21, Frank Garman, 1400 Red Vantress, 10 wks, to Leola Poultry, 15.75¢, 22, Miller & Bushong (Evans Dague), 2700 White Vantress, 10 wks, to Producers Cooperative Exchange, 17.75¢, 23, Miller & Bushong (R. C. Garman), 8000 White Vantress, 9-6, to College Hill Poultry, 16¢, 24, Miller & Bushong (Leonard Dertz), 4500 White Vantress, 10 wks, to Victor F. Weaver, Inc., 16¢; 25, Miller & Bushong (Harold Stansfield), 6000 White Vantress, 9-3, to Victor F. Weaver, Inc., 16.25¢,

26, Miller & Bushong (Harold Stansfield), 6000 White Vantress, 9-3, to Victor F. Weaver, Inc., 16.25¢, 27, Miller & Bushong (Elmer Garber), 1200 Red Vantress, 10 wks, to Walter C. Mellinger, 16.25¢; 28, Miller & Bushong (Elmer Garber), 1000 White Vantress, 10-4, to College Hill Poultry, 16¢, 29, Miller & Bushong (Elmer Garber), 2800 White Vantress, 9-5, to H. W. Longacre, 16¢; 30, Miller & Bushong (Parke K. Herr), 4900 White Vantress, 10-2, to College Hill Poultry, 16.25¢;

31, Miller & Bushong (Parke K. Herr), 4750 White Vantress, 10-2, to College Hill Poultry, 16.25¢; 32, Red Rose Experimental Farm, 3900 White Vantress, 10 wks, to Producers Cooperative Exchange, 16¢; 33, Red Rose Experimental Farm, 3900 White Vantress, 10 wks, to College Hill Poultry, 16¢; 34, Red Rose Ex-

perimental Farm, 1400 White Vantress, 10 wks, to H. W. Longacre, 16¢, 35, Clayton Hirneisen, 3200 White Cornish cross, 10-5, to College Hill Poultry, 16¢,

36, Aaron E. Beiler, 350 White Mountains capettes, 13-2, to Walter C. Mellinger, 19¢, 37, Harvey M. Zimmerman, 350 Beltsville turkeys, 17 wks, no sale, 26.75¢ bid, 38, Richard Trostle, 1000 New Hampshire cockerels, 11 wks, to Daniel K. Good, 12.5¢; 39, Richard Trostle, 500 New Hampshire fowl, 14 months, to Producers Cooperative Exchange, 15.75¢, 40, Wilbur Hess, 2000 Indian Rivers, 11 wks, to Victor F. Weaver, Inc., 15.75¢,

41, Paul K. Shoemaker, 1200 Red Vantress, 9-6, to Producers Cooperative Exchange, 15.25¢; 42, Farmers Supply, (John Graver), 4900 White Vantress, 10-2, to H. W. Longacre, 16.25¢; 43, Farmer's Supply (John Graver), 3800 White Mountains, 10-2, to H. W. Longacre, 16¢; 44, Clair Oundt, 2700 Red Vantress, 10 wks, to Walter C. Mellinger, 16.25¢, 45, Miller & Bushong (Mearl Long), 4500 White Vantress, 10 wks, to Victor F. Weaver, Inc., 16¢;

46, Miller & Bushong (Mearl Long), 3300 White Vantress, 10 wks, to College Hill Poultry, 16¢; 47, Miller & Bushong (Mearl Long), 1000 White Vantress, 10 wks, to College Hill Poultry, 16¢; 48, Miller & Bushong (Dean F. Bacon), 3000 White Mountains, 10-2, to Daniel K. Good, 16¢; 49, Warren Witmer, 325 Leghorn fowl yearlings, to Roy E. Ream, 10.5¢; 50, George Weaver, 7000 Indian Rivers, 10-1, to Roy E. Ream, 10.5¢;

51, George Weaver, 7000 White Cornish Cross, 10-1, to Harry H. Weaver, Jr., 16¢; 52, Paul Rowe, 5250 White Vantress, 9-2, to College Hill Poultry, 16¢; 53, Paul Howe, 5250 White Vantress, 9-2, to Pennsylvania Dutch Farms, 16¢; 54, Raymond N. Miller, 10,000 White Vantress, 9-3, to Producers Cooperative Exchange, 16¢; 55, Raymond N. Miller, 10,000 White Vantress, 9-3,

(Continued on page 3)

ALTMAN'S SUPER-A FEEDS

are timed-tested, scientifically balanced, vitamin complete and are manufactured daily in three modern plants. Compare our prices

Water Softener	\$2.15	Quality Mash 3.90 D.P.	4.00
50 lb. Bulk 85c	1.30	Blue Bird All Mash	3.75
4 lb Bricks 18c	23c	20% O. F. Hog feed	3.55
Weed Salt 100 lb.	2.15	Oats 80 lbs	3.20
16% Super A. Dairy	3.30	Rabbit Pellets	4.75
Fitting Ration	3.45	Dog Meal 25lb	2.05
Corn	3.45	Pastry flour (25 lb)	1.58
Scratch 3.70 D.P.	3.90	Grower Crumbles	4.30
Fine Chick	4.80	Peat Moss	4.20
20% Production Mash	4.15	Rock Salt	1.60

SPECIAL CHOP FOR STEERS & HOGS 3.10

WE DELIVER

ALTMAN'S CASH FEED STORE

WILLIS H. WEAVER MANAGER

947 Harrisburg Ave. Phone Lanc. EX 4-7715

10c per hundred discount on half ton lots or more.

PRICES SUBJECT TO CHANGE

Lancaster Livestock: Choice, Prime Steers Move Mostly 50 Cents Lower

By DAVID S. LORENSEN
USDA Market News Service
WEDNESDAY TO
WEDNESDAY REVIEW

Lancaster Nov. 8. (Wednesday to Wednesday Review) (USDA)—CATTLE Three days 3,970, week ago 3,534. Compared with last Wednesday, slaughter steers choice and mixed choice and mixed choice and prime mostly 50 cents lower, some sales \$1.00 off Standard and good grades about steady. Heifers scarce, weak to 50 cents lower, cows around 25 cents higher, bulls mostly steady. Stockers and feeders more active than a week ago, fully steady with a week ago. The week's supply comprised around 75 per cent stockers and feeders and 10 per cent cows. Bulk good and choice fed steers \$20.50-25.50, a few lots prime and mixed high choice and prime \$26.50-28.00. Load 1280 lb prime steers \$28.00 with 25 per cent sort at \$27.00. Standard and low good grade steers \$16.50-20.00. A few lots standard and good heifers \$15.00-20.00. Utility and commercial cows \$11.25-13.75; canners and cutters \$8.25-12.00. Utility and commercial bulls \$15.00-16.50, good fed bulls to \$20.50, cutters down to \$12.50. Bulk medium and good stock steers 750 lbs and lighter \$16.00-19.50 a few loads mixed good and choice 725-760 lb. stock steers \$20.00-21.50. Common grades \$12.50-14.75. Several lots medium and good 800-1000 lb. feeding steers \$17.50-20.50, a few loads mixed good and low choice \$21.00-21.50 and load 880-lb choice feeding steers \$22-10. A few good and choice stock steer calves \$20.00-22.00.

Calves: 925, week ago 914. Compared with last Wednesday, choice and prime vealers mostly steady, lower grades weak to \$1.00 lower. Bulk vealers good and choice \$21.00-27.00; high choice and prime \$27.50-31.00. Utility and standard grades \$14.00-20.00, culls down to \$10.00. HOGS: Three days 1,421, week ago 1,584. Compared with last Wednesday, barrows and gilts around 25 cents higher. Sows scarce mostly steady. In Wednesday's trade bulk barrows and

gilts U. S. mixed 1-3, 190-240 lbs. \$16.50-16.75, a few sales late back to \$16.25. Scattered small lots mostly No. 1 and 2 up to \$17.00. Weights 240-270 lbs. \$15.75-16.50 a few around 160-lb weights down to \$16.00. Sows all weights U. S. mixed 1-3, \$12-50-14.50.

SHEEP 273, week ago 201. Lamb supply small mostly woolled slaughter lambs. Aged sheep scarce. Slaughter lambs mostly steady with last Wednesday. Bulk 70-95 lb woolled slaughter lambs good and choice \$18.00-21.50, a few choice to \$22.00. Utility and low good grades \$14-00-17.50. Cull lambs down to \$8.00

LOANS

For any farm purpose
Made the farmer's way

LANCASTER
PRODUCTION
CREDIT ASS'N.
36 E. Chestnut St.
Lancaster, Pa.
Ph. Lanc. EX 3-3921

Go from
Chick to Check
in Record Time

Martin's
Vantress-Nichols
Chicks

The Best Broiler Cross
at its Best

Martin fuses the work of the nation's leading breeders to give you top quality chicks that mature early for quick broiler profits.

PLACE YOUR ORDER NOW
MARTIN'S HATCHERY
POULTRY FARMS, INC.
Lancaster, Pa. Phone 2-2164

FOR SALE

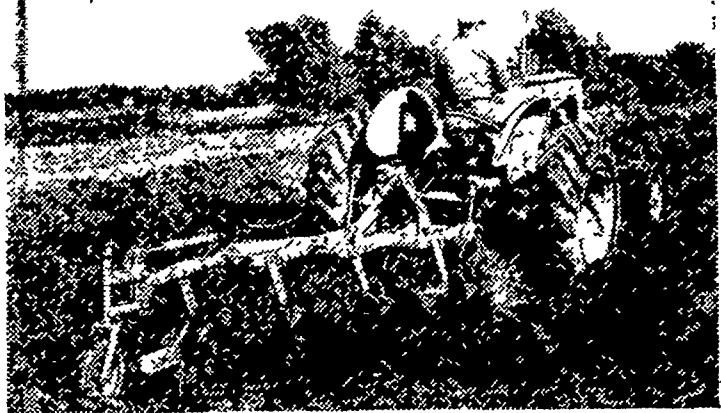
Single, Stucco Home, in Mt. Joy, Pa., in a residential neighborhood. This home is almost brand new (4 1/2 years old) and in excellent condition. There is a large living-dining room, beautiful kitchen with knotty-pine cabinets, tiled bath with shower, 2 large bedrooms, and plenty of closets—all on a one-floor plan. Has a full basement, and a garage with a porch attached.

Some Outstanding Features:

- ✓ Oil-Hot Water Heat with Summer-Winter Hook-Up
- ✓ Beautex Colored Plaster Walls and Ceilings
- ✓ Ceramic Tile Window Sills
- ✓ Paved Driveway
- ✓ Venetian Blinds
- ✓ Fireplace

Can be seen at 208 Park Avenue, Mt. Joy, or call Mt. Joy 3-6772 for inspection. Price \$15,500.00

MODERN 4-PLOW POWER — WD-45



POWER CRATER and TRACTION BOOSTER are Allis-Chalmers trademarks.

ALLIS-CHALMERS 
SALES AND SERVICE

Mann & Grumelli Farm Serv. R. S. Weaver
Quarryville, Pa. Stevens, Pa.

L. H. Brubaker Snavelys Farm Service
Lancaster, Pa. New Holland, Pa.

N. G. Myers & Son L. H. Brubaker
Rheems, Pa. Lititz, Pa.