



TWENTY-FOUR TOP steers were selected Tuesday at Union Stock Yards, Lancaster, to be shown as Lancaster County entries in the 1957 State Farm Show at Harrisburg. Here is a general view of the event. (Lancaster Farming Staff Photo).

Farm Show Committee Launches Last Preparations for Big 1957 Exposition

Intensive preparations for the 1957 Pennsylvania Farm Show next January 14-18 started with the annual fall meeting of the Farm Show Committee composed of representatives of 52 statewide farm and allied organizations.

The 41st State Farm Show theme was announced as "Pennsylvania Agriculture Builds for Tomorrow."

State Secretary of Agriculture W. L. Henning, chairman of the Farm Show Committee, also announced at the Oct. 4 meeting that a record-breaking total of \$58,556 is being offered by the Farm Show Commission for premiums on winning exhibits at the 1957 show. This exceeds the previous record set last Jan. by \$2,588.

Committee members filed requests for rooms in which to hold the annual meetings of their associations. Approximately 30 statewide farm organizations plan to hold educational meetings during Farm Show week.

Declaring that the 1957 Farm Show theme is most timely, Secretary Henning said "Every industry must plan ahead in this, the atomic age, if it is to survive. Agriculture is no exception. Technological developments in farming are bringing change and advancement at a rapid pace."

He said education has been "the sparkplug for past achievements in Pennsylvania agriculture," and the Farm Show "is recognized nationally as one of the State's most valuable assets in the education of producers and consumers of farm products."

The theme will be reflected in every phase of the exposition, "making the 1957 Farm Show one of the most effective ever held," he added.

Two new departments have been added for the coming Farm Show, the committee was told. The Commission is offering \$240 in premiums for Christmas trees and \$360 as prizes in a hay show. The additions make a record total of 27 departments for competitive exhibits at the exposition.

Representatives of the Pennsylvania Flying Farmers Association and the Pennsylvania Yorkshire Swine Club attended their first meeting of the Farm Show

Committee. Both organizations were elected to membership at the 1956 spring meeting of the Committee.

A report of progress on the coming show was made by John B. McCool, Farm Show Director.

He said competitive display units in the lobbies have been revised to include the hay display and provide a new area for the nut exhibits.

The Pennsylvania poultry industry is to supply a special exhibit in the front lobby where a dairy "globe" display was shown at the 1955 and 1956 Farm Shows.

The Pennsylvania Flower Growers Association once more will have floral displays throughout the building similar to the 1956 show.

Change in Mutton And Lamb Grading

WASHINGTON — (USDA) — The U. S. Department of Agriculture has proposed to amend the official standards for grades of lamb and mutton carcasses. Proposals to change the standards were discussed and demonstrated at several meetings with various segments of the industry during the last 18 months, and the proposed changes were approved by an industry-wide committee appointed by the National Wool Growers Association.

Herefords Dominate Chicago Feeder Show, Sale at \$42.50 Top

CHICAGO, Ill. — (Special) — Herefords continued to dominate the annual Chicago Feeder Cattle Show and Sale when a uniform load of 20 Hereford feeder steers were named grand champion of the show over all breeds. These Herefords were shown by Mike Hinman Ranches, Kremmling, Colo., and sold for the top price in the sale of \$42.50 cwt. to Elkhart, Ind., 4-H Club. The steers weighed an average of 386 pounds.

There were a total of 826 loads of all major beef breeds exhibited, and Herefords made up 674 loads of the total.

The reserve champion Hereford load of feeder steers was shown by the Egan Cattle Co., Ashby, Nebr., and sold to the Elkhart, Ind., 4-H Club for \$32.50 cwt.

In the Hereford yearling steer division, the first place load was shown by A. J. Barta & Son, Buffalo Gap, S. Dak.

In the Hereford heifer calf division, first place went to Milton Starr, Stapleton, Nebr.

In the yearling Hereford heifer show, Earl Macke, Bloomington, Wis., showed the first place load.

The show was judged by a committee made up of Tilden Berg, Sciota, Ill.; Anton Wintner, Wisner, Nebr.; Warren Monfort, Greeley, Colo.; and Armour Morgan, Perryville, Ind.

HIS LOSS

COVENTRY, England — in order to get a little extra needed money, a husband sold his wife's sewing machine for six pounds (about \$30). She objected strenuously and made him buy it back. The husband had to pay the dealer's new price — twelve pounds — or about \$60.

Buff Coleman To Direct 1957 Livestock Show

HARRISBURG — Buff L. Coleman of Easton, for more than 30 years county agricultural agent in Northampton County, today was named director of the annual Pennsylvania Livestock Exposition to be held in the Farm Show arena in November of next year.

Announcement was made by Chairman Leon Falk, Jr., Pottsville, following a meeting of the exposition's executive committee. He said Coleman's background in livestock work, including activities during each Pennsylvania Farm Show, fit him ideally for the task of handling all details for the exposition. Coleman, who started county agent work in Cumberland County, retired from his Northampton duties in September.

The new manager said the exposition will attract several thousand head of outstanding beef cattle, sheep and swine from livestock breeding areas of the United States and Canada, making it an open show of international proportions.

The 1957 show is being made possible through a \$50,000 appropriation to the State Department of Agriculture. The event will be conducted by the Pennsylvania Livestock and Allied Industries Association in cooperation with the Department.

Falk reported progress in arrangements for the appearance during the exposition of one of the nation's outstanding western rodeos in the Farm Show arena. Steps are being taken to arrange for educational exhibits stressing new aids to the livestock industry.

Date for the Pennsylvania Livestock Exposition is Nov. 12-16, 1957.

MODEL T RACES POLICE

WAUSAU, Wis. — Two men in a Model T of 1917 vintage failed to outrace a police car and were fined a total of \$508 recently. The old car, however, didn't stop until it turned into a farm yard and banged against a shed. The driver, Joseph Ustuska, 36, was fined \$279, given a mandatory 30-day jail sentence and lost his driving license for a year, after being convicted of drunken driving and two other traffic charges. Mike Somers, 43, owner of the car, was fined \$229 on charges of drunkenness and two traffic violations.

California tops all the states in the rise in population.

SEE THE NEW
SILVER KING
Direct Drive
CHAIN SAW
LESTER A. SINGER

RONKS
Ph. Strasburg, OV 7-3226

MAR-GRO Vitamin Supplement Your cattle and hogs need
DUTCH BELL for Dairy
BETTER BEEF for steers and
TRIPLE RICH for Hogs
We also have the famous
DAN PATCH HORSE POWDER
Manufactured by Mar-Gro
Mfg. Co., R2 LANC.
AARON S. MARTIN
DISTRIBUTOR
R1 EAST EARL

Authorized Dealers

- * Master Mix
- * Ferguson Equipment
- * Lincoln Welders
- * Thermopane
- * Universal Milkers
- * Miller's Insecticides
- * Koppers Creosoted Posts
- * Wirthmore Feeds
- * Haverly Bulk Tanks
- * Sauder Loaders
- * Anhydrous Ammonia
- * Wheel A-Way Egg Washers
- * Irrigation Equipment
- * DeKalb Chix & Started Pullets

HIESTAND Inc.

MARIETTA
HA 6-9301

Attention FUEL OIL USERS!!

A price increase in fuel oil has recently been awarded BUT you can protect yourself against rising prices.

You can **SAVE**
up to **30¢**

on every dollar you spend for fuel with

Johns-Manville
Spintex
INSULATION
Call Us Today
INSULATION CO.



WM. M.
THOMPSON

Quarryville, R. 1
PA 90R3

H. M. KRADY

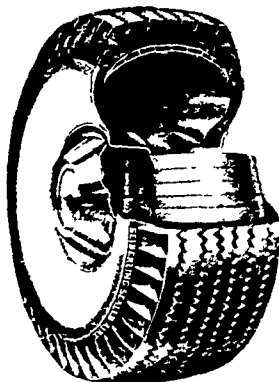
Distributor For

SEIBERLING SAFETY TIRES

Let Us Handle Your
Tire Problems

AUTO
TRUCK

Tractor Tires
Recapping



WRITTEN GUARANTEE
ON ALL
SEIBERLING TIRES

Phone EX 2-9507

608 N. Prince St.

Lancaster, Pa.