

2 Pennsylvania Holstein Sires Win Recognition

Two Holstein bulls owned by Pennsylvania Holstein breeders have recently been recognized as Silver Medal Production Sires by The Holstein-Friesian Association of America.

Awarded on a basis of performance of the bull's daughters as compared with the production of their dams, this recognition is accorded only a select few of the many Holstein bulls in service.

Similar in many respects to the well-known "sire proofs" issued by the DHIA organizations, Daughter-Dam comparisons used for medal awards must include 10 pairs of daughters and dams.

All records must have been made under official Herd Improvement Registry or Advanced Registry test supervised by the state college in cooperation with the Holstein Association. Such comparisons are issued for hundreds of bulls, yet only a small percentage qualify for silver medal honors.

Bulls honored in Pennsylvania include:

Pabst Jess Rowayne 1104658, owned by H. M. Gans, Gans: 14 daughters, 14,776 lbs. of milk, 579 lbs. fat, and 14 dams, 14,352 lbs. milk, 531 lbs. fat.

Pabst Roamer Burcader 1080777 (VG), owned by NEPA Artificial Breeding Coop., Tunkhannock: 15 daughters, 15,283 lbs. milk, 559 lbs. fat, and 15 dams, 15,125 lbs. milk, 567 lbs. fat.

Poultry Conference Set for Feb. 26-27

A poultry housing and equipment conference will be held at the Pennsylvania State University Feb. 26 and 27, 1957. The two-day conference will center on the University's solar poultry house which has gained worldwide attention.

This past year a conventional house the same size as the solar house has been built. At the time of the conference, observations can be made of a flock housed at 3 square feet per layer in the conventional house compared to 1 square foot per layer in the solar house.

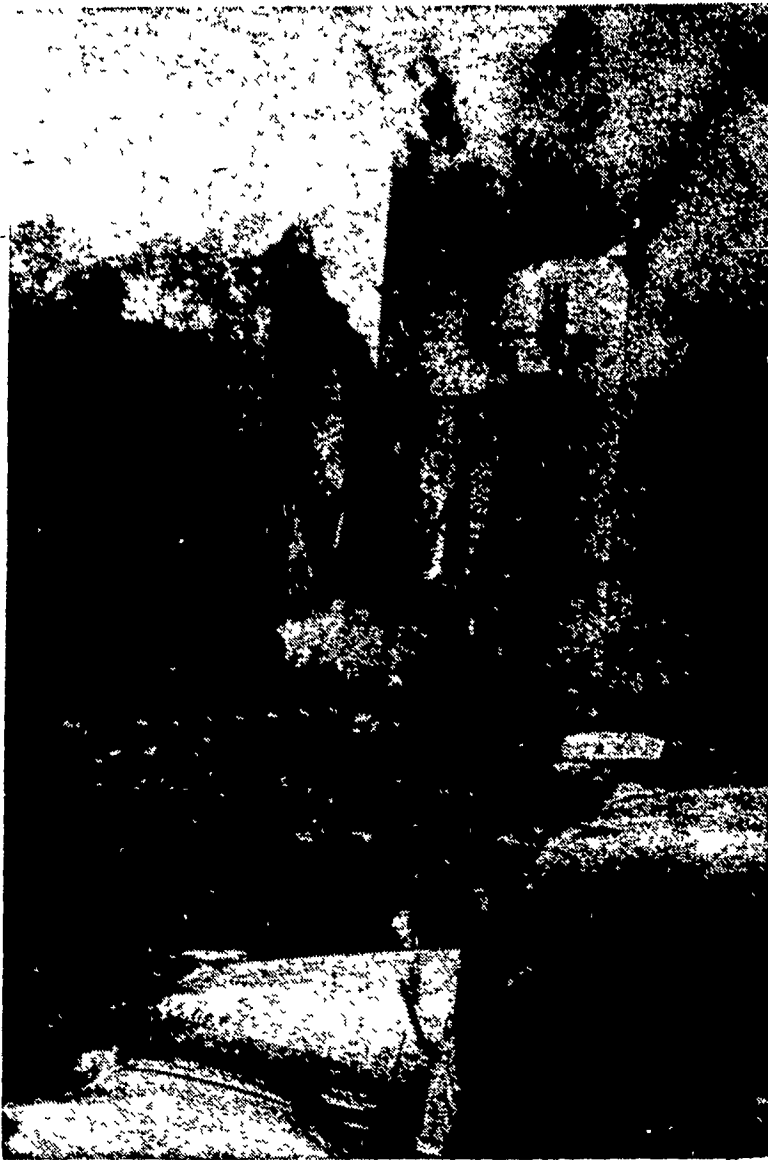
The flocks will be compared with respect to egg production and quality, mortality, feed efficiency, and labor requirements.

A similar conference two years ago was attended by over 200 poultrymen, industry representatives, and research workers from 21 states, Canada, Spain, and Scotland.

TRAFFIC TOLL

The traffic toll for the first five months of 1956 amounted to 14,720, a nine per cent increase over the corresponding period of 1955, and a new record. May was the 15th straight month that traffic deaths showed an increase in comparison to corresponding months of the previous years. For the first four months of 1956, there was a six per cent increase in travel and a ten per cent increase in fatalities.

Fire Destroys Home



Here is a view of the fire which Saturday destroyed the farm home of the Robert Lentz family just southeast of Quarryville. In the foreground is the Quarryville fire truck, which, with the Bart Co., responded. (Lancaster Farming Staff Photo).

Corn Support in Price Range of \$1.40-\$1.65 Here

Price supports for corn grown this season in Lancaster County remain at \$1.65 for acreage allotments participants and \$1.40 per bushel for those not in full compliance with the Soil Bank provisions.

Corn-grading No. 3 or better, testing not more than 20.5 per cent moisture and stored on the farm is eligible for loan. The top price will be paid producers who planted within measured acreage allotments and who did not harvest more than 85 per cent of their Soil Bank base while placing at least 15 per cent of this base in Acreage Reserve.

Farmers wishing to store corn are urged to contact the Lancaster County Agricultural Stabilization and Conservation Committee office. A service fee of \$3 is charged, and corn must be cribbed at least 30 days before samples may be taken.

High moisture is reported in corn being picking now by many farmers.

Population, Income In 1956 Estimated

The nation's population is expected to reach 185 million by 1965. Figuring from present trends, the economists expect a 30 per cent increase in per capita disposable income by 1965.

The people of this country have traditionally spent about 5 1/2 per cent of their disposable income for meat, according to the National Live Stock and Meat Board.

Marshal Bulganin, Soviet Premier, when asked about Russian aid offers to Latin America: "That (aid) given by the United States is help; ours is collaboration."

Editorial, Daily Mirror, British newspaper: "Harry Truman stepped down from power politics as unspooled a man as when he stepped up."

Gamal Abdel Nasser, President of Egypt "We want the American people to understand us . . . At the same time, we want to be completely independent."

PREMERGE

Is Best For Control of CHICKWEED in ALFALFA in STRAWBERRIES in OATS, BARLEY & WHEAT and it is economical, too

These dealers and applicators will supply you and assist you with practical advice:

- | | |
|--|---|
| Bareville
Dick Harry & Chet Nolt | Manheim
Farm Bureau |
| Buck
Musser's Feed Mill | Millersville
Millersville Supply Co. |
| Denver
Denver Supply Co. | New Holland
Clarence H. Rutt & Son |
| Elizabethtown
Kaylor Bros., R. D. 1 | Paradise
Victor J. Denlinger
Ben. B. Landis, RD. 1 |
| Florin
Hess Bros., S. Market St. | Peach Bottom
C. E. Wiley & Son |
| Gap
Summers Bros. | Quarryville
Ross H. Rohrer & Sons |
| Kirkwood
L. H. Jackson | Stevens
Herbert F. Gehr |
| Lancaster
Farm Bureau
L. H. Brubaker, R. D. 4 | West Willow
West Willow Farmers Assn., Inc. |
| Letort
Ament's Hardware | Willow Street
Cope & Weaver Co. |

PREMERGE is a product of DOW CHEMICAL CO.

J. C. EHRlich CO.

736 E. Chestnut St.
Lancaster, Pa.
EX 3-2489

Lifts High, Loads Fast

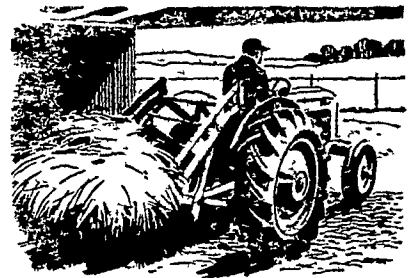
WITH A FLICK OF YOUR FINGER!



DEARBORN REAR MOUNTED LOADER

You can put the hand fork in the shelf . . . this team takes the pain out of lifting and loading! It helps you get more work done faster, too, with a saving in time and money. Just take five minutes to attach this tool, after original installation on the Ford Tractor. Then flick your finger and watch the booster cylinders, teamed with Ford's Hydraulic Touch Control, lift loads as heavy as 460 pounds . . . as high as six feet. The fork dumps easily by trip rope from the tractor's seat. A handy hitch lets you use your Ford Tractor for hauling and other drawbar jobs without removing the loader.

SEE this easy-on, easy-off loader that has capacity, ease of operation and a low price. Buy this money-making equipment on your farm. Convenient terms.



WORKS INSIDE OR OUT—Rear mounting makes this loader useful even inside barns with low overhead clearance. It's close coupled for operating ease and efficiency in close quarters. It's a "man-saver" any way you use it!



Allen H. Matz
Denver Ph. AN 7-6502

Sauder Bros.
New Holland Ph. EL 4-8721

Elizabethtown Farmers Supply, Inc.
Ph. 7-1341

Haverstick Bros.
Columbia Pike Lancaster Ph. EX 2-5722

Conestoga Farm Service
Quarryville Ph. 282