

Hereford Association Marks 75 Years; National Observance Set for Oct. 22

KANSAS CITY, Mo. — (Special) — Seventy-five years of dedicated efforts to build a better breed of beef cattle will be marked officially by Hereford breeders from across the nation during American Royal week in Kansas City.

Highlighting the series of special events scheduled for the anniversary will be the Diamond Jubilee banquet to be held in the Grand Ballroom of the Hotel Muehlebach at 7 p. m. Monday, Oct. 22.

Main speakers at the banquet will be Herbert Chandler of Baker, Ore., former president of the Association and a member of the board when the Association marked its fiftieth anniversary, and Mayor H. Roe Bartle of Kansas City, Mo.

The Association's seventy-fifth annual business meeting will be held at 2 p. m. Monday in the dining room of the headquarters building on Hereford Drive. President Dale Carthers of Mission San Jose, Calif., will preside at the session.

Opening event on the Diamond Jubilee schedule will be a social gathering and buffet supper to be held in the Grand Ballroom at the Muehlebach at 6:30 p. m. Sunday with members of the Kansas City Hereford Club serving as hosts. Visiting Hereford breeders and dignitaries attending the Royal will be guests of the club.

Climaxing the special events marking the occasion will be an American Royal Livestock Show salute to the Hereford breed in the show arena Wednesday night, Oct. 24, during the judging of the best 10 head show. TV announcer Randall Jessee of WDAF, Kansas City, will carry the commentary on the history of the breed.

It was 75 years ago that the American Hereford Cattle Breeders Association evolved from a meeting held in Chicago. First officers were C. M. Culbertson of Chicago, president; T. E. Miller

of Beecher, Ill., secretary, and Adams Earl of Lafayette, Ind., treasurer.

"The objects and purposes of the organization, as set forth by resolution adopted at the first meeting was to promote the interests of the Hereford breed of cattle and to secure their introduction and trial more generally throughout the beef producing section of the country, believing that a fair and impartial trial of these alongside the other beef breeds would establish their superiority as profitable beef producers, both as grazers and in the stalls, in ability to withstand hardships and in quality of product."

Up to 1900 a total of 125,000 entries had been recorded. The next ten years increased total registrations to 350,000. The next decade brought an increase to 982,356. Today, nearly 9 1/2 million Herefords are entered on the Association records with registrations last year equal to the total registrations for the first 35 years.

He thinks of Herefords because he has learned to associate the white faces and red bodies with scenes that have become typical across America. He sees them grazing in pastures along highways from coast to coast and from the Canadian border to Florida. He has seen them munching at troughs in feedlots over the nation. He has enjoyed the Hereford industry's end product in the form of a succulent T-bone steak, and he has learned to associate Herefords in the grand champion's circle in livestock shows in virtually every state.

Deadline to Sign Under Soil Bank Extended, Nov. 30

WASHINGTON — (USDA) — Final date for farmers to enter into Conservation Reserve contracts under the Soil Bank for this year, 1956, has been extended from Oct. 15 to Nov. 30, 1956, the U. S. Department of Agriculture announced Oct. 9.

At the same time, the Department said that all Conservation Reserve contracts, including those for tree planting, will be limited to 10 years, except when seedling trees are not available to a participating farmer. In cases where seedlings are not available during one or more years of a Conservation Reserve contract, the contract may be extended at the option of the participating farmer for a like number of years. In no case may a contract be extended so as to cover a total or more than 15 years, nor beyond Dec. 31, 1974, the Department emphasized.

Extension of the deadline for signing 1956 Conservation Reserve contracts to Nov. 30 was necessary because the press of other Soil Bank business — the 1956 Acreage Reserve program and payments under it and the 1957 winter wheat Acreage Reserve — has kept many county Agricultural Stabilization and Conservation committee from doing the necessary work on the Conservation Reserve program, the Department explained. While this has not been true in all States, the extension will give those States where the condition exists relief from the pressure of making the Oct. 15 deadline.

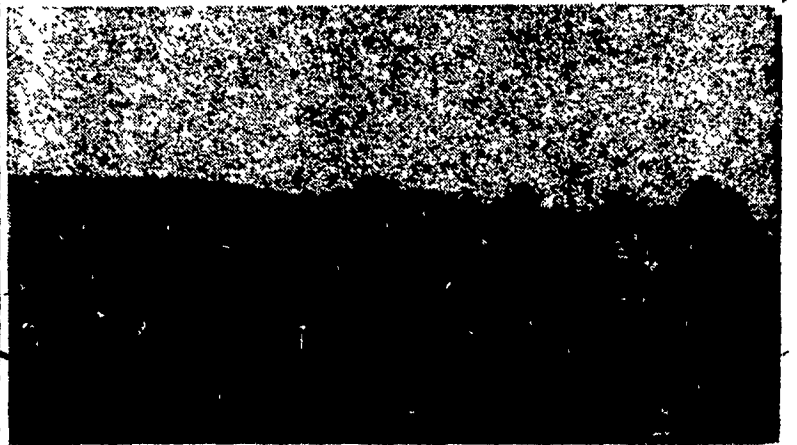
To participate in the 1956 Conservation Reserve, a farmer must have eligible land which has not been cropped or grazed this year. He must also have reduced production of Soil Bank base crops this year to qualify for an annual payment at the regular rate.

The final date for signing Conservation Reserve contracts to begin in 1957 is March 15, 1957.

3000 AT BANK OPENING

Visiting the newly renovated Farmers National Bank of Litzitz last weekend were approximately 3000 customers and friends. Work started last November. The main banking room has been completely remodeled and a drive-in window has been in-

Santa Gertrudis — Feeding Time



Santa Gertrudis on the Buck and Doe Run Farms division of King Ranch, near Coatesville, follow a jeep and trailer carrying pellet feed. (Lancaster Farming Staff Photo).

MORE FARMERS and "TREE MEN"

Use This



THAN ANY OTHER CHAIN SAW



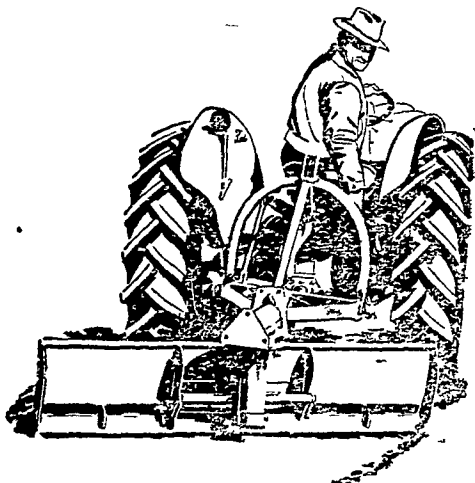
NATIONAL CUTTING CONTEST WINNER

HERE'S WHY farmers, nurserymen, arborists and estate owners favor MALL 2MG over all other saws — It's faster, easier handling... packs 5 1/2 brake horsepower into a light but rugged 29 lb. unit. Swivels to cut at any angle with engine level, 18" to 54" bars. Falls up to 4 1/2 ft. timber. Come in... TRY IT!

Models-low as \$169.95

Snavelly's Farm Service

New Holland Phone 4-2214



LOW COST WAY to —

• GRADE • LEVEL • MOVE DIRT and do many other USEFUL JOBS

FORD

Adjustable Rear Blade

Here is a rear mounted blade that will help you to perform a wide variety of useful jobs, easily and at low cost. It attaches readily to the 3-point hitch of your Ford Tractor, adding to its convenience and utility. The blade can be offset, tilted, adjusted for pitch and angled to either right or left — or may be operated straight behind, whichever is best for a particular job. It may also be reversed for such jobs as backfilling or for working up to obstructions which the tractor can't cross. A gauge wheel, ditching point and end plates are sold separately.

See us NOW for the latest in low-cost labor-saving equipment

Allen H. Matz

Denver Ph. 7-6502

Sauder Bros.

New Holland Ph. 4-8721

Elizabethtown Farmers Supply Inc.

Ph. 7-1341

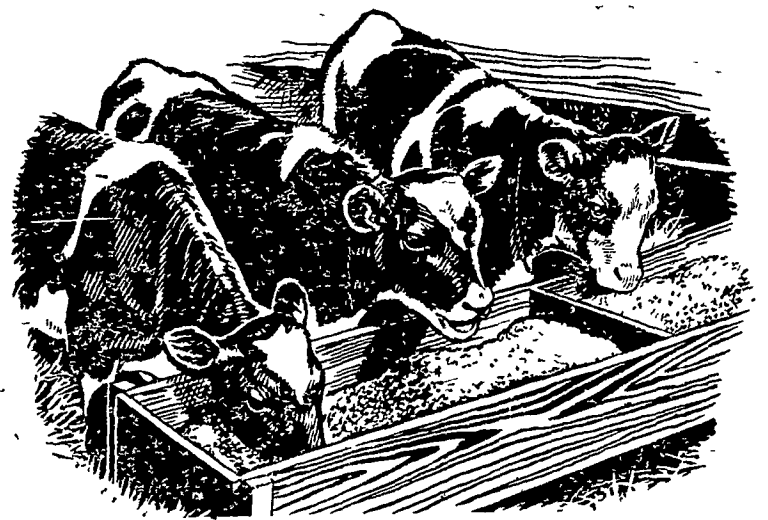
Conestoga Farm Service

Quarryville Ph. 282

Haverstick Bros.

Columbia Pike Lancaster Ph. 2-5722

NEW PURINA CALF STARTENA



Grows Calves Half-Way to Breeding Age at Four Months!

More efficient than ever before, NEW Purina Calf Startena grows calves half-way to breeding weight at four months of age... gets them off to a flying start when the growing is easy!

Fed from 3 days on, this on-the-farm tested Calf Chow contains just what calves need to make big growth at the age when growth is naturally most rapid, easiest to stimulate through proper feeding.



Get your heifers started with New Purina Calf Startena!

Snader's Mill

Mt. Airy

John J. Hess II

Intercourse—New Providence

John J. Hess

Kinzers—Vintage

John B. Kurtz

Ephrata

S. H. Hiestand

Salunga

James High

Gordonville

H. S. Newcomer

Mt. Joy

Wenger Bros.

Rheems

B. F. Adams

Bird-in-Hand

Warren Sickman

Pequea

J. Fred Whiteside J. H. Reitz & Son

Kirkwood

Millway

