

Hereford Group Will Cite Ten County Agents

Kansas City, Mo. —(Special)—The American Hereford Association will honor ten county agents and vocational agriculture instructors from various parts of the country during the American Royal week in Kansas City.

Each of the youth leaders was selected by the Association field representatives from their respective territories for their outstanding contributions to the improvement of beef cattle in their areas.

The agents and instructors will be guests of the American Hereford Association at their Diamond Jubilee banquet Monday night, October 22, and other events during the week, marking the 75th anniversary of the American Hereford Association.

Leaders selected for the trip this year are: Jim Copenhaver, Vo-Ag Instructor, Wytheville, Va.; Ray Eilers, County Agent, Winner, S. D.; H Burkett Hedgepeth, Asst. County Agent, Laurel, Miss; Charles E. Kirk, County Agent, Castle Rock, Colo.; J. L. McMullan, Vo-Ag Instructor, Jefferson, Ga.; Frank M. Newsom, County Agent, Alpine, Texas; Mitchel Ni-dever, Vo-Ag Instructor, McFarland, Calif.; Ed Schwitzky, County Agent, Princeton, Mo.; Don Walker, Vo-Ag Instructor, Amanda, Ohio, and E. L. Woods, County Agent, Prineville, Ore.

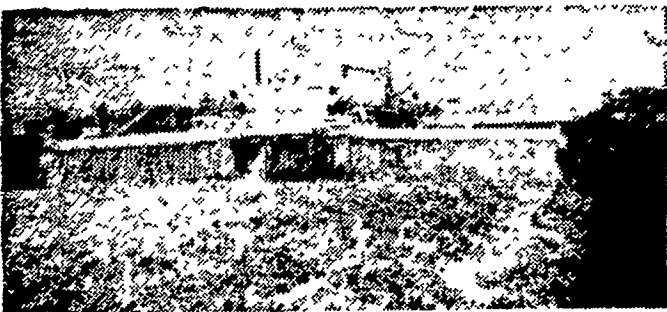
EXPERIENCED

At a Negro wedding when the clergyman read the words "love honor, and obey," the bridegroom interrupted, and said: "Read that again, suh. Read it once mo' so's de lady kin ketch de full solemnity ob de meanin', I'se been married befo."

Half million is granted for an all-out attack on palsy.

MAR-GRO Vitamin Supplement Your cattle and hogs need
DUTCH BELL for Dairy
BETTER BEEF for steers and
TRIPLE RICH for Hogs
 We also have the famous
DAN PATCH HORSE POWDER
 Manufactured by Mar-Gro
 Mfg. Co., R2 LANC.
AARON S. MARTIN
DISTRIBUTOR
R1 EAST EARL

HAVE YOUR FARMLANDS LIMED NOW BY A MODERN SPREADER LIKE THIS...



This modern 30 foot spreader will spread *Martin's Quality Lime* quickly, efficiently and make your soil more productive.

As you know, every crop makes your soil more deficient in certain minerals, which, if not replaced by liming, will cause poor crop production and unhealthy livestock.

To meet this condition, you should have your soil tested periodically to determine if your soil needs lime and the amount needed. You can do this by taking advantage of our **FREE SOIL TEST**. Phone New Holland 4-2112 or Terre Hill 5-3455. Send a card or letter to

IVAN M. MARTIN, INC.

912 Quarry Road, Blue Ball, Lancaster County, Pa.

Care of Machinery Necessary for Safety, Especially Now

HARRISBURG — An ounce of prevention is worth a pound of cure, the old saying goes, and that is especially true of safe corn picking.

Farmers who go into the fields with well adjusted and smooth-running pickers and operate them at correct speeds will not have to make many stops, for that helps to prevent accidents from attempting to unclog the machines, says Joseph McCurdy, extension agricultural engineer at Pennsylvania State University.

McCurdy urges farmers to go over their corn equipment with the help of a manufacturer's manual; replace worn parts and make necessary adjustments for smooth operation.

Snapping roller clearance of five-eighths to three-fourths inch at the bottom of the rolls is generally considered normal. McCurdy says. This clearance should be increased for lodged corn, but decreased for picking where the stalks are wet or damp and hard to snap.

McCurdy emphasizes that picker efficiency is greatly decreased as forward speed increases. Picker should not be operated faster than three to four miles per hour regardless of the condition of the corn. More rapid picking increases snapping roll losses, incompletely husks the corn and causes excessive shelling of corn.

USDA Buys 2 Million Pounds of Turkeys

Washington —(USDA)—Frozen turkey purchases amounting to 1,737,000 lbs were made in the week to Oct. 4 by the U. S. Department of Agriculture under the special buying program to help prices during the heavy marketing season for this year's record turkey crop. Purchases since first buying on Sept. 28 total 2,097,000 lbs.

Prices paid for the week's purchases (week beginning Oct. 1) ranged—from 37.23 to 39.50 cents per pound for U. S. Grade A turkeys f.o.b. plants. In making awards, consideration was given to bid prices in various areas in relation to transportation costs for distribution.

Bids were received from 42 bidders who offered a total of 6,780,000 pounds. Approximately \$800,000 of Section 32 (tariff) funds will be expended for purchases to date.



Winner of the recent West Lampeter Community Fair Showmanship Contest was Elvin Shelly, 12, R1 Manheim. The son of Mr. and Mrs. John Shelly, he is an eighth grade student at Manheim Township School.

Farm Calendar

(If you wish your Coming Events listed in these columns, write a card or letter to LANCASTER FARMING, Quarryville, Pa. Be sure to include name of sender.—Editor).

OCTOBER

Oct. 6-13 — Fourth International Dairy Show and World Championship Rodeo, Chicago.

Oct. 10-13—Mt. Joy Community Exhibit.

Oct. 12-13—Annual Lancaster County Auction, Lancaster Chapter, ABC, Lampeter Sales Pavilion.

Oct 13 — Society of Farm Women No 2 will meet at the home of Mrs. Marlin Hesler, 1 30 p m.

Oct 13 — Brandywine Feeder Calf Sale, New Holland, Pa.

Oct 15-26 — Two-week course in Farm Machinery and Tractors, by college of agriculture, The Pennsylvania State University.

Oct. 16 — Lancaster County Beef Cattle Tours, 7 30 a m Conestoga Bus Terminal.

Oct. 18-20 — Dillsburg Community Fair.

Oct. 19 — Almar Farms Dispersal Sale, Sybertsville, Pa.

Oct. 20 — Lancaster County Pomona Grange 71, entertains Berks County Pomona Grange, Brickerville Fire Hall, 8 p m.

Oct. 20-27 — American Royal, Kansas City, Mo., national Future Farmers of America convention.

Oct. 20—Methodist Men, Annual chicken barbecue, Quarryville Memorial Methodist Church, 5-8 p. m.

Oct. 22 — Fountain display, chimes, Longwood Gardens, Kennet Square, 8 p.m.

Oct. 22—Farm Women 9, Hal-lowe'en party, Mrs Bertha Herr, Herr's Nursery, R6 Lancaster, covered dish supper, 6 p.m.

Oct. 24 — Fulton Juvenile Grange, No. 343 meets.

Oct. 24 — Bucks County Poultry Association Meeting Segal Hall, National Agricultural College, Doylestown, Pa.

Oct 27 — Society of Farm Women No. 5 will meet at Kauffman's Tea Room. Guest of society will be member of Society

No 27. Dr Caleb Bucher will speak. Banquet 6 30 p. m. — Penn Harris Hotel, Harrisburg, Pa.

NOVEMBER

Nov. 3—County Convention Lancaster County Farm Women's Societies.

Nov. 3 — Feeder Calf Sale, Nov. 23-Dec. 1—International Livestock Exposition, Chicago.

JANUARY, 1957

Jan. 14-18—Pennsylvania Farm Show, Harrisburg.

Jan. 14-18, 1957 — Pennsylvania Farm Show Week, Farm Show Building, Harrisburg, Pa.

Jan 15, 1957 — Poultry Federation's Annual Farm Show

Christiana
 Bowling Center
Luncheonette
 (On Old Route 41)
 Daily Special Platters
 Homemade Soups
 Foremost Ice Cream

LANDIS STONE MEAL CO.

Consult Us For The Best
WHITE LILLY ALL PURPOSE MINERALS
 Agricultural Ground Limestone — Hard Poultry Grits
 Feed Mixing Calcium — Calcium — Stable Grits —
 Lime Spreading Service
RHEEMS, PA.
 Call Elizabethtown 7-2901 — Night Calls 7-2906

Fertilize Your Grass Now!



CONTACT US FOR SPREADING OR BAGGED HIGH QUALITY

Organic Fertilizer
AMOS EBY & CO.

Paradise Ph. Strasburg OV7-2490