

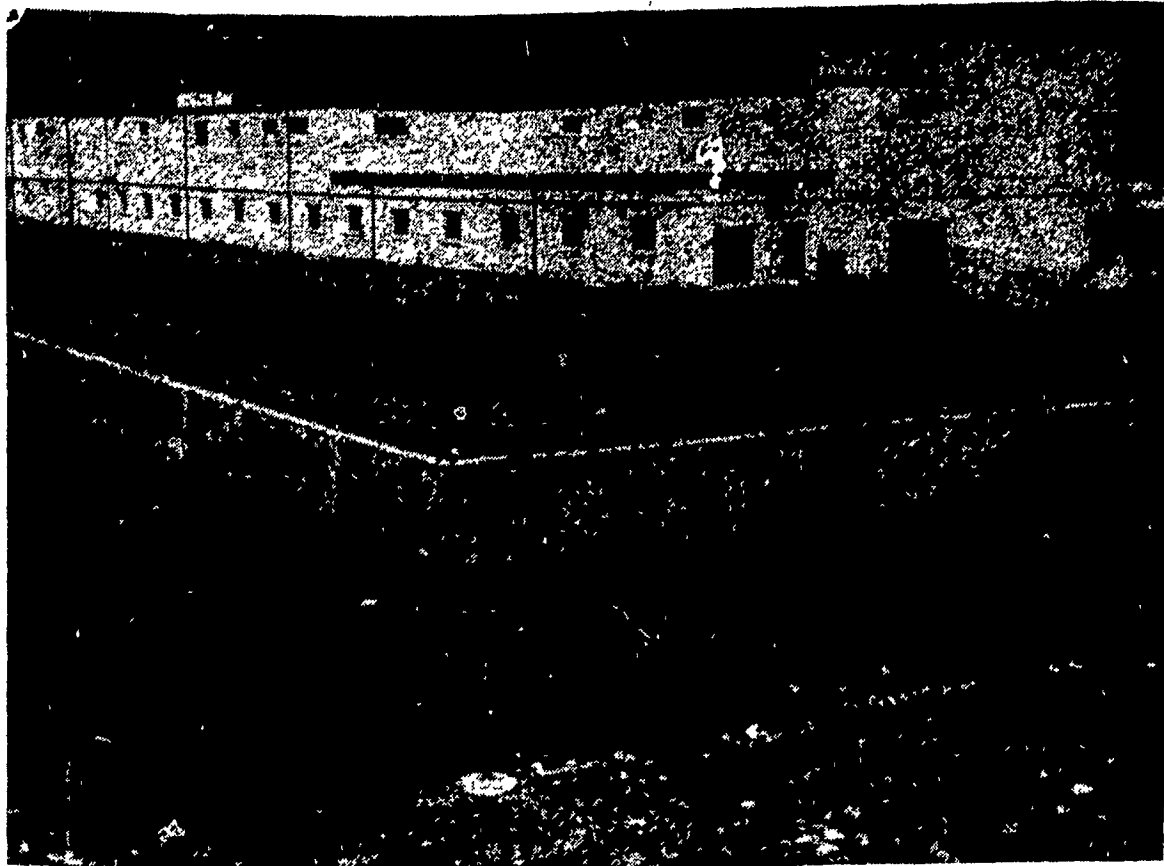
York Man Heads Millers and Feed Dealers for Year

A York man, William H. Sprenkle, partner in Spangler and Sprenkle, Inc., York, was elected President of the Pennsylvania Millers' and Feed Dealers' Association Monday at their convention meeting in Reading. Sprenkle succeeds Carl W. Boyer, Pottstown Roller Mills, Pottstown, Pa. B. E. Zechman, of Zechman's Flour Mills, Potts Grove, was elected 1st Vice President Robert I. Aten of D. D. Fritch Milling Company, Maungie, was elected Second Vice President; and T. Luke Toomey of Toomey's Mill, Wila, was re-elected 3rd Vice President.

New Treasurer for the organization is John L. Zug of Richland Rochard I. Ammon, Ephrata, is executive secretary.

Directors reelected were C. G. Pitts of Pitts Feed and Supply Company, Smithton; and F. Clay Erdley, Big Valley Feed and Grain Company, Belleville.

New Directors elected by the Association were Alvah Fassett, partner in Brown and Fassett, Tunkhannock; Robert G. Graybill, assistant manager of Miller & Bushong, Inc., Rohrers-town; and Arthur B. Stover of Edwin F. Stover Estate, Perkasio.



Principal research building on USDA's new \$10 million Plum Island Disease Laboratory is shown here, to be site of search on foot-and-mouth disease and other foreign diseases that might endanger the nation's livestock industry.

Schedule Busy for Secretary and Aide

Tuesday's visit in Reading was but one of several stops in a two-day northeastern U. S. swing made by U. S. Secretary of Agriculture Ezra Taft Benson and his assistant, Robert D. McMillen.

Flown to Reading in the company plane of the McMillen Feed Co. — no relation to the assistant, it was added — Tuesday afternoon, the party remained overnight in Reading, flying Wednesday to an Air Force base on Long Island, proceeding by auto and boat to Plum Island for dedication of the new animal disease laboratory, then back to New York City to appear on Martha Rountree's program on 100 television and 250 radio stations in simultaneous broadcast-teletext Wednesday evening.

Don't play around too much with "schemes." Hard work pays much better dividends.

ALERT
Aware of heavy penalty for sleeping on sentry duty, a recruit on early-morning relief did his best to keep his eyes open. In spite of all efforts, he blotted out standing up.

Awakened by a slight noise, he raised his eyes and saw the Officer of the Day approaching. The recruit stood for another minute with his head bowed, then lifted it slowly. Looking piously up at the sky, he murmured, "Amen."

Plum Island Lab Dedicated; New Disease Attack

Ezra Taft Benson, United States Secretary of Agriculture, Wednesday dedicated the new Plum Island Animal Disease Research Laboratory off Long Island with the statement: "With the opening of this laboratory, we launch the first full-scale attack inside our own borders on the causes of foot-and-mouth disease and other treacherous foreign diseases. This is truly a great day in animal disease research."

The Secretary cited the \$2 billion annual toll of animal disease, "the biggest single drag on livestock production."

Declaring that if foot-and-mouth disease ever became deep set in the United States, he said, "it could cost this country up to one-fourth of its production of meat, milk and other animal products. We do not intend to let it gain a hold in this country. We are hoping to keep it out."

America is "on the threshold of the most challenging and most prosperous decade the world has even seen," the Secretary said, adding that in the past three and one-half years, Federal appropriations for agricultural research have increased 75 per cent.

A man who sticks to his principles, is stubborn; a man who doesn't is a hypocrite—so what? Answer the question yourself.

24-Hour Service

LEARNER'S PERMIT
EDWARD G. WILSON
Notary Public
16 S. Lime St. Lancaster, Pa.

LOANS

For any farm purpose
Made the farmer's way

LANCASTER
PRODUCTION
CREDIT ASS'N.
36 E. Chestnut St.
Lancaster, Pa.
Ph. Lanc. 3-3921

MORE FARMERS and "TREE MEN"

Use This
Mall MODEL 2MG

THAN ANY OTHER CHAIN SAW



HERE'S WHY farmers, nurserymen, arborists and estate owners favor MALL 2MG over all other saws. —It's faster, easier handling packs 5 1/2 brake horsepower into a light but rugged 29 lb. unit. Swivels to cut at any angle with engine level, 18" to 54" bars. Falls up to 4 1/2 ft. timber. Come in TRY IT!

Models low as \$169.95.

Snavely's Farm Service

New Holland
Phone 4-2214

Go from
Click to Check
in Record Time

Martin's
Vantress-Nichols
Chicks

The Best Broiler Cross at its Best

Martin fuses the work of the nation's leading breeders to give you top quality chicks that mature early for quick broiler profits.

PLACE YOUR ORDER NOW
MARTIN'S HATCHERY
POULTRY FARMS, INC.
Lancaster, Pa. Phone 2-2164

Lancaster Broiler Market

(Continued from page 2)

Longacre, 20; 24, Melvin Sager, 250 White Rock and Rhode Island pullets, 15 1/2 wks, no sale, 19 bid; 25, Melvin Sager, 250 White Rock and Rhode Island cockerels, 15 1/2 wks. to Stauffer Farms, 21; 26, Walter B. Groff, 2500 White Vantress, 9-4, to H. W. Longacre, 20; 27, Enos R. Buckwalter, 3500 White Cornish cross capettes, 13-5, no sale, 21 bid; 28, Enos R. Buckwalter, 4000 White Cornish and White Rocks, 11-5, to H. W. Longacre, 20; 29, Enos R. Buckwalter, 3500 White Cornish Cross, 11-5, to Mandata Poultry, 20.

HARRISBURG — The State Department of Agriculture today estimated the 1956 Pennsylvania turkey crop at 2,067,000 birds, most of them to be marketed over the Thanksgiving and Christmas seasons.

The total is 10 per cent below the 1955 crop of 2,297,000 turkeys, Federal-State surveys showed.

NEED LIMESTONE?

BELMONT High Magnesium Limestone

- 57% Calcium Oxide Equivalent
- Even Spreader Service
- Free Soil Analysis
- Low Moisture Content

Call . . .

Wenger & Sensenig Co.

R. D. No. 1, Paradise, Pa. Ph. Gap HI2-4500

David B. Johns

Ronks, Ph. Strasburg OV7-3301



LOOKING FOR RESULTS?

Try WIRTHMORE HI-ENER-G 16

Here's what it will give you:

- ★ Greater returns over feed cost.
- ★ Good performance in any climate, in pens or cages.
- ★ Labor savings — easy to feed — a complete ration.

Why not try it and check the results for yourself?

WIRTHMORE FEEDS

Glenn H. Herr

Manheim RD1,
Ph. Landisville 3547

Hiestand, Inc.

Marietta
Ph. 6-9361

Clem E. Hooper

Intercourse
Ph. 8-3431

LeRoy M. Sensenig

Hinkletown
Ph. Ephrata 3-2469

