

Milk Prices Set at \$4.26

NEW YORK — Dr. C. J. Blandford, Market Administrator of the New York metropolitan milk marketing area, Sept. 12 announced a uniform price of \$4.26 per hundredweight (46.5 quarts) for milk delivered in August to 333 plants in the New York milkshed. The uniform price in July was \$3.92 per hundredweight; in August, 1955, it was \$4.15 per hundredweight.

For Top Profit Use ROHRER'S Quality SEED GRAINS

SEED WHEAT
Certified Seneca
Certified Dual
Select Pennol

SEED BARLEY
Cert. Wong Barley
Cert. Hudson Barley

WINTER OATS
Cert. Lee Cold Proof
Leconte

Orders Filled Promptly

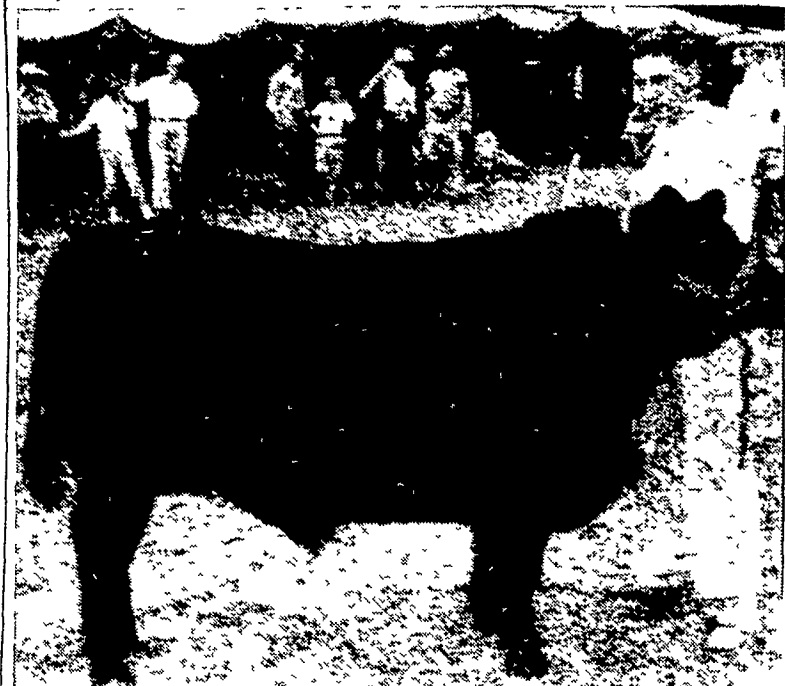
**P. L. ROHRER
& BRO. INC.**

Smoketown, Pa.
Ph. Lanc. 22659

Champion Steers



Grand Champion - Ernst Frey



Reserve Champion - Donald Herr

Champion steers at the Southern Lancaster County Community Fair Wednesday afternoon were Angus, first going to Ernst Frey of Quarryville, second to Donald Herr of Refton. (Lancaster Farming Staff Photo)

Angus 4H FFA Field Day at Fox Hill Sept. 29

Programs and regulations for the Brandywine 4H and FFA Angus Heifer show Saturday, Sept. 29 at Fox Hill Farm near Unionville are being distributed today by Scott L. French, fieldman-secretary of the Pennsylvania Aberdeen-Angus Breeders Association.

From 10:30 to 12:00, the Fox Hill Angus herd and pastures will be open for inspection. Lunch will be served at noon, with compliments of the Brandywine Association.

A demonstration of fitting and grooming will start at 1 p. m., with judging of Angus Club

Donald Quarles, Secretary of the Air Force:

"The grave danger in the present situation is that the talk of peace and the smiles from behind the iron curtain may delude us into a sense of security and cause us to relax our guard to the point where terms can be forced upon us"

heifers at 2 and presentation of awards at 3 p. m.

Prize monies, \$20 for first, second \$18, third \$15, fourth \$12, fifth \$10, sixth \$7, and 8 to 12 inclusive \$2 each, are being donated by Mr. and Mrs. Robert E. Montgomery, owners of Ash Grove Farm, New Hope, Pa., and the Brandywine Angus Breeders, Inc.

"The time to feed a cow
for **MILK PRODUCTION**
is when she's



DRY!

...says Purina
Research

Strange as it sometimes seems, dry cow feeding is a true course to milk production and long cow life.

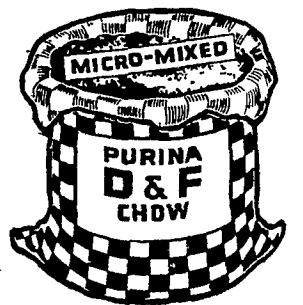
Extra body weight and built-up reserves of strength resulting from a good dry cow feeding plan put a cow in shape to deliver a big, strapping calf and go right to work on a long, steady lactation the day she freshens.

Purina on-the-farm research tells us that 100 lbs. extra body weight on a dry cow means up to 2000 lbs. more milk in her next lactation... in addition to the benefits of health she gains.

Purina D and F (dry and freshening) CHOW is tailor-made for dry cow feeding. It contains ample quantities of body-building nutrients to build both cow and unborn calf during this critical period. It contains minerals for strong bones, vitamins for health.

Properly fed, quality Purina D & F Chow not only gives cows a big head start on their next lactation... it keeps them in condition to breed again and again and again... for long, profitable, healthful productive life.

See us for details of dry cow feeding the Purina way TODAY!



Snader's Mill
Mt. Airy

John J. Hess II
Intercourse—New Providence

John J. Hess
Kinzers—Vintage

John B. Kurtz
Ephrata

S. H. Hiestand
Salunga

James High
Gordonville

H. S. Newcomer
Mt. Joy

Wenger Bros.
Rheems

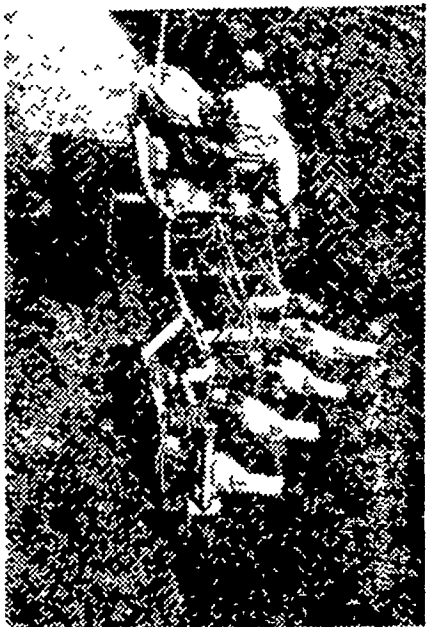
B. F. Adams
Bird-in-Hand

Warren Sickman
Pequea

J. Fred Whiteside **J. H. Reitz & Son**
Kirkwood Millway

STRETCH

YOUR
POWER
DOLLARS
FURTHER



**WD-45
4-PLOW
POWER**

\$2380 with dual front wheels
\$2475 with adjustable front axle (as shown)
Prices f. o. b. factory

Standard equipment includes power take-off, two-clutch power control, starter, lights, battery, muffler, TRACTION BOOSTER system, SNAP-COUPLER hitch, adjustable hydraulic seat, power-shift rear wheels and fenders.

TRACTION BOOSTER and SNAP COUPLER are Allis-Chalmers trademarks. Prices subject to change without notice.

ALLIS-CHALMERS 
SALES AND SERVICE

Mann & Grumelli Farm Serv **R. S. Weaver**
Quarryville, Pa. Stevens, Pa.

L. H. Brubaker **Snavelys Farm Service**
Lancaster, Pa. New Holland, Pa.

N. G. Myers & Son **L. H. Brubaker**
Rheems, Pa. Lititz, Pa.

ASC-Committee Voting Monday

(Continued from page 13)

Quarryville, and Joseph Hess, R3 Quarryville, tied for member and 1st alternate; Martin Irwin, R3 Quarryville, 2nd alternate.

13 — Ira Welk, R1 Strasburg, chairman, J Robert Hess, R1 Strasburg, vice chairman, Omar L Houck, R1 Paradise, member, Mark E Hershey, R1 Paradise, 1st alternate; Ernest Eshleman, R1 Gordonville, 2nd alternate

14 — Elmer Huber, R1 Pequea, and Ivan Sollenberger, R2 Holtwood, tied for chairman; J. Fred Shenk, R1 New Providence, member, Heishey Ressler, R2 Holtwood, 1st alternate, Landis Kreider, R1 New Providence, 2nd alternate.

15 — Frank Aument, R1 Holtwood; J. Lehman Burkins, R1 Quarryville, and Joseph Sinclair, Drumore, all tied for chairman; Charles D. Scheiber, R2 Quarryville, 1st alternate; William Bucher, R1 Quarryville, 2nd alternate.

16 — John Long, Peach Bottom, chairman; Thomas Galbreath, Peach Bottom, vice chairman, Howard Walton, RD Christiana, member; Francis Kirk, Peach Bottom, 1st alternate; Harold Jackson, Peach Bottom, 2nd alternate

ZOO IN CAR

SAN PEDRO, Cal. — Attracted by a dog and a puppy on the front seat of a parked automobile, Harbor Guard H. E. McMahon poked his head into the car and then sprang back. In the back seat were thirteen live rattlesnakes and a chuckawalla desert lizard, in cages, and 15 turtles were crawling on the floor. The car belonged to Jasper N. Maris, herpetologist and cannery worker, who said his hotel wouldn't let the creatures in.