

Broilers Tuesday Average 18.69, Low Point for Season; Year Ago Avg. 26.61

Lancaster Poultry Exchange (Rohrerstown, Pa.) (Sales Report, Sale 177, Tuesday, Sept. 11, 1956) — Broilers Tuesday dropped to new seasonal lows at the Lancaster Poultry Exchange, averaging 18.69 in a range of 18.50 to 18.75 cents. For the corresponding sale a year ago, Sept. 13, 1955, Sale 85, the range was 26.25 to 27 cents, the average 26.61.

Listed Tuesday this week were 11 lots, 50,600 birds, offered were 10 lots, 49,600 and sold were seven lots, 45,300. For the corresponding day a year ago, listed, offered and sold were 13 lots, 24,450 birds.

Listed for yesterday's auction were 34 lots, 119,500 birds.

Here are Tuesday, Sept. 11, 1956 sales by lot number, each

preceded by "11-", seller with grower indicated in parentheses, amount and bred, age by weeks and days, buyer and price: —

1, Eber Hess, 3300 White Vantress, 8-3, no sale, 17 bid; 2, Fruitville Farms (Abram Sheik), 5700 White Vantress, 9-4, to Victor F. Weaver, Inc., 18.75; 3, Fruitville Farms (Abram Sheik), 9000 White Vantress capetted, 9-4, to Victor F. Weaver, Inc., 18.75; 4, Fruitville Farms (Abram Sheik), 4800 White Vantress, 9-4, to Daniel K. Good, 18.75; 5, John Yetter, 1000 Barred Cross pullets, 16½ wks, no sale, no bid;

6, Levi Rohrer, 300 Meatpackers, 11-6, no sale, 17.50 bid; 7, L. J. Denlinger Co (Richard S

Lancaster Broilers Thursday, Sept. 6: Top 20.25, Average 19.03 on 119,500

Lancaster Poultry Exchange (Rohrerstown, Pa.) (Sales Report, Sale 176, Thursday, Sept. 6, 1956) — Broiler prices held steady in the auction of 119,500 birds in 37 lots Thursday, Sept. 6, in a range of 18.75 to 20.25, averaging 19.03 cents. Two lots,

McCauley), 2800 Indian Rivers, 10 wks, to Roy E. Ream, 18.50; 8, L. J. Denlinger Co. (A. K. King), 700 White Vantress, 10 wks, withdrawn prior to sale; 9, Raymond M. Weaver, 8000 Indian Rivers, 10 wks, to Carl B. Risser, 18.75; 10, Raymond M. Weaver, 8500 White Vantress capetted, 9-6, to Victor F. Weaver, Inc., 18.50; 11, Aberdeen Mills-Herbert Miller, 6500 White Vantress, 9 wks, to Victor F. Weaver, Inc., 18.75

700 capettes sold at 23.25 and 25 cents, one lot of 1100 pullet capettes at 30, and one lot of 600 Leghorn fowl at 14.50. Listed were 47 lots, 134,850 birds, offered 46 lots, 134,600.

Topping the Thursday trade was Ralph Zimmerman, Rohrerstown, on 1100 White Vantress, 10 wks, that sold to Ray W. Gibble, R2 Columbia.

Here are Thursday sales by lot number (each preceded by -6-), seller, with grower indicated in parentheses, amount and bred, age by weeks and days, buyer and price:

1, Miller & Bushong (Parke K. Herr), 4000 White Vantress, 9-5, to H. W. Longacre, 19.25; 2, Miller & Bushong (Parke K. Herr), 4000 White Vantress, 9-3, to H. W. Longacre, 19.25; 3, Miller & Bushong (Lloyd Ream), 4600 White Vantress, 9-2, to Tilley's Poultry, 19; 4, John V. Erb, 4000 Indian Rivers, 9-3, no sale, 18.75 bid; 5, Ira B. Landis, 3000 White Vantress, 9-3, to Grimes & Hauer, 19.75;

6, Harold O. Yoder, 1500 White Vantress, 9 wks, to John E. Rettinger, 19; 7, Benjamin F. Weaver, 250 White Vantress, 10-5, withdrawn prior to sale; 8, Benjamin F. Weaver, 6000 White Vantress, 9-2, to Roy E. Ream, 19; 9, Benjamin F. Weaver, 500 White Rock cross, 10-1, to Roy E. Ream, 19, 10, Charles D. Warfel II, 5000 Indian Rivers, 9-6, to Producers Cooperative Exchange, 19.25;

11, Charles D. Warfel II, 5000 Indian Rivers, 9-6, to Producers Cooperative Exchange, 19.25; 12, Charles D. Warfel II (Richard), 200 Indian Rivers, 9-6, to Producers Cooperative Exchange, 19.25, 13, Irvin B. Gingrich, 1100 White Vantress pullet capettes, 20 wks, to Walter C. Mellinger, 30; 14, Marlin Longenecker, 550 White Cross, 13 wks, to Stauffer Farms, 19.50; 15, William C. Schultz, 8300 White Vantress, 9-6, to Grimes & Hauer, 18.75;

16, Miller & Bushong (Glenn Deardorff), 3000 Red and White Vantress, 9-5, to College Hill Poultry, 19, 17, Miller & Bushong (Robert Thompson), 5200 Indian Rivers, 9-2, to Carl B. Risser, 18.75; 18, Miller & Bushong, (Robert Thompson), 4800 Indian Rivers, 9-2, to Carl B. Risser, 18.75, 19, Miller & Bushong (Robert Thompson), 4500

White Vantress, 10 wks, to Mandata Poultry, 18.75; 20, Leroy M. Sensenig, 5100 Red Vantress, 10 wks, to G. F. Manbeck, Inc., 19;

21, Leroy M. Sensenig, 4800 Red Vantress, 10 wks, to Walter C. Mellinger, 19.25; 22, Daniel G. Forry, 1275 White Vantress, 10-5, to Walter B. Lehman, 19.50; 23, Miller & Bushong (A. Huber Harnish & Son), 8800 White Vantress, 9-2, to Grimes & Hauer, 18.75; 24, Miller & Bushong (A. Huber Harnish & Son), 2300 White Mountains, 9-2, to Meader's Poultry, 19; 25, Miller & Bushong (A. Huber Harnish & Son), 4600 Indian Rivers, 9-2, to College Hill Poultry, 18.75;

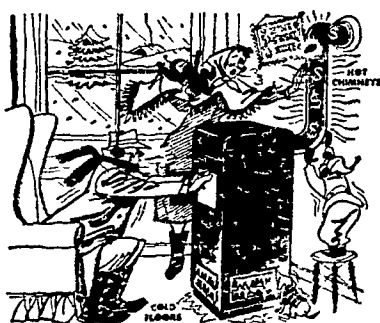
26, Miller & Bushong (Stanley Carpenter), 3000 White Vantress, 9-2, to Tilley's Poultry, 19; 27, Miller & Bushong (Stanley Carpenter), 5000 Red Vantress, 9-2, no sale, 18.75 bid; 28, Miller & Bushong (Stanley Carpenter), 3500 White Vantress, 9-2, to Tilley's Poultry, 19; 29, Miller & Bushong (Walter S. Kinsay), 3000 White Mountains, 9-6, no sale, 19 bid; 30, Miller & Bushong (Christ L. Heri), 4000 White Vantress, 10-2, to H. W. Longacre, 19.25;

31, C. Richard Neff, 1350 Indian Rivers, 10 wks, to Meader's Poultry, 19; 32, Phares Auker, 3900 Red Vantress, 9-5, to College Hill Poultry, 18.75; 33, Ralph Zimmerman, 1100 White Vantress, 10 wks, to Ray W. Gibble, 20.25, 34, Lester S. Wenger, 400 White Vantress, 10-2, to Daniel K. Good, 20; 35, Edwin K. Bare, 425 White Vantress, 12 wks, to Walter B. Lehman, 19.25;

36, Edwin K. Bare, 600 Leghorn fowl, 17½ months, to Carl B. Risser, 14.50; 37, D. H. Sharrer (L. Lefever), 3500 Red Vantress, 9-6, to Roy E. Ream, 19.25, 38, Andrew N. Miller, 6000 White Vantress, 9-2, to Tilley's Poultry, 19; 39, David H. Martin, M. S., 350 White Vantress capettes, 12 wks, to Leola Poultry, 25; 40, Vernon Frankhouser, 2000 White Vantress, 11 wks, to Roy E. Ream, 20;

41, Aaron E. Beiler, 350 White Mountain capettes, 12-2, to Carl B. Risser, 23.25; 42, Enos R. Buckwalter, 4600 White Cross and White Rocks, 10-6, to H. W. Longacre, 19.25; 43, Daniel Warner, 2600 Lancaster Cross, 10 wks, to Tilley's Poultry, 19,

STOP FREEZING!



DID YOU EXPECT A WARM HOME WHEN YOU BOUGHT YOUR HEATER?

- ARE YOU CONFINED TO ONE ROOM?
- ARE YOUR FLOORS ICY COLD?
- ARE YOUR CEILINGS OVERHEATED?
- ARE YOU WASTING FUEL ON SOOT AND SMOKE?
- IS YOUR HEAT GOING UP THE CHIMNEY?
- ARE YOUR FUEL BILLS TOO HIGH?

is your heater foolin' and freezin' you-

WHY WAIT UNTIL NEXT YEAR

SWITCH NOW—TO A

Siegler
PATENTED AUTOMATIC
OIL
furnace HEATER



SIEGLER LETS YOU LIVE IN EVERY ROOM

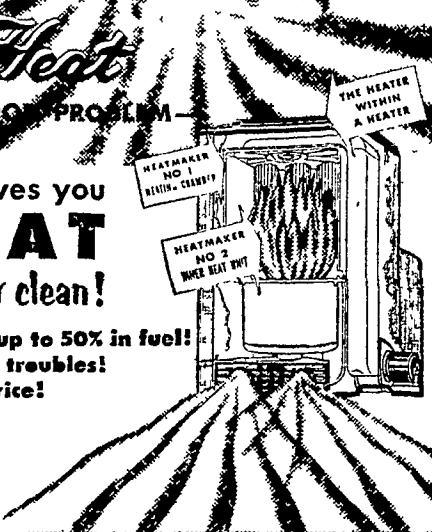
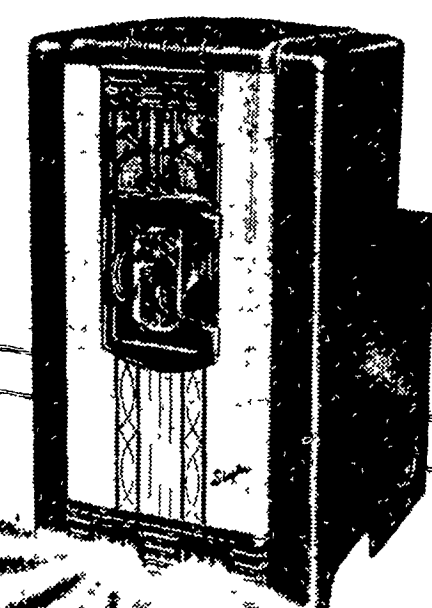
Tropical Floor Heat

GOES TO THE BOTTOM OF THE COLD FLOOR PROBLEM— ENDS OVERHEATED CEILING

For the price of a heater—Siegler gives you **FURNACE HEAT** No costly pipes or registers to install or clean!

2-IN-1 HEATMAKER stops chimney waste—saves up to 50% in fuel! SIEGLERMATIC DRAFT ends soot, smoke, chimney troubles! CAST IRON CONSTRUCTION for a lifetime of service! PORCELAIN ENAMEL for a lifetime of beauty!

MONEY BACK GUARANTEE! Prove it—make the SIEGLER 'MATCH TEST'



Lancaster Livestock: Prime Cattle Top at \$31.50; Best Hogs at \$18.50

By DAVID S. LORENSON
USDA Market News Service
WEDNESDAY TO
WEDNESDAY REVIEW

LANCASTER, Pa. Sept. 13 — (Wednesday to Wednesday Review) — (USDA) CATTLE: Three days 4,221, week ago 3,632, including holiday. Compared with last Wednesday slaughter steers and heifers strong to 50 cents higher. Best action on steers high choice and prime 1100 lbs and over. Cows 25-50 cents higher, bulls strong to 50 cents up. Stockers and feeders moderately active, around 50 cents higher. Three-day receipts included around 55 per cent stocker and feeder steers and 10 per cent cows. Slaughter steers more plentiful than a week ago and offering grading mostly good to prime. Bulk choice and prime slaughter steers 975-1330 lbs \$26.50-31.25, one load average to high prime 1265-lb steers \$31.50. Good and low choice \$22.00-26.00, some standard and low good grass and shortfed steers \$18.50-21.50, a few good grass steers to \$23.00. Good and choice heifers \$20.00-23.50; standard \$16.00-19.00. Late sales utility and commercial cows \$12.25-14.00; canners and cutters \$9.25-12.50. Utility & commercial bulls \$16.00-18.00, good fed ulls to \$21.50; cutter grades \$13.00-14.75. Most medium and good

450-750-lb stock steers \$17.00-21.00; common grades \$13.50-16.00. Medium and good 800-1000-lb feeders steers \$18.00-21.50, several loads and lots high good to low choice \$21.50-22.50, one load \$22.75.

CALVES: 1,061, three days, week ago 591 including holiday. Veal calves around 50 cents lower than last Wednesday. Wednesday's trade included good and choice vealers \$19.50-23.00; high choice and prime \$23.50-27.00; utility and commercial \$15.00-19.00.

HOGS 1,845, three days, week ago including holiday, 1,145. Compared with last Wednesday barrows and gilts mostly steady, sows unchanged. Bulk barrows and gilts this week, 200-240 lbs U. S. mixed 1-3, \$17.25-17.50, numerous small lots to local small killers \$17.75-18.00, a few Monday to \$18.50. Weights 240-270 lbs \$16.50-17.25, some around 160 lbs down to \$16.00. Sows all weights, U. S. mixed 1-3, 13.00-14.50.

SHEEP: Three days 491, week ago, including holiday, 322. Compared with last Wednesday slaughter lambs around \$1.00 higher. Bulk native spring lambs 70-90 lbs Good and choice \$20.00-23.50; a few high choice and prime \$24.00-24.50, utility grades down to \$15.00 and culls as low as \$12.00. Aged sheep too scarce for a market test.

See the Siegler Heater in Our Display at the Fall Farm Shows
LITITZ - Sept. 19, 20, 21 & 22 WEST LAMPETER - Sept. 26, 27 & 28

L. H. BRUBAKER

350 Strasburg Pike
Lancaster, Pa.

R. D. 3
Lititz, Pa.