

Farm Bureau Co. Rebuilds Plant At New Holland

A new plant costing \$125,000 is under construction by the Farm Bureau Co to replace the mill and warehouse at New Holland which were destroyed by fire on April 14, 1956. A modern office and display room, and large warehouse are completed and in use since early in August.

Construction of a modern mill is now underway. This mill is engineered and designed for the most efficient operation, and constructed in such a way that it will be a desirable part of the New Holland Community.

The new mill will be one of the most modern and up to date custom grinding and mixing operations in this part of the country. It is designed with sufficient storage bins for the handling of bulk grains as well as receiving the major feed ingredients in bulk. Also facilities to blend, store and deliver bulk feeds with the new air lift bulk delivery truck. Feed loaded in this Bulk Truck will be weighed, and a ticket printer attached to the scales will show the actual weight of the feed. With no chance of human error, farmers will be assured of getting exactly what they are billed for. Mechanical conveyors are incorporated in order to eliminate much physical labor and time.

With this new mill, patrons and farmers will receive quick and efficient service. The large hammermill, the two-ton mix-

ers, and the molasses mixer are lined up to do a fast and thorough job. When grain is delivered to the mill by the farmer to be ground and mixed into their formulas, they merely dump it into a pit where it is automatically fed into the hammermill, is automatically weighed after it is ground, and then goes through the mixers. Driving onto the scales to weigh the load, and then the empty vehicle, is completely eliminated.

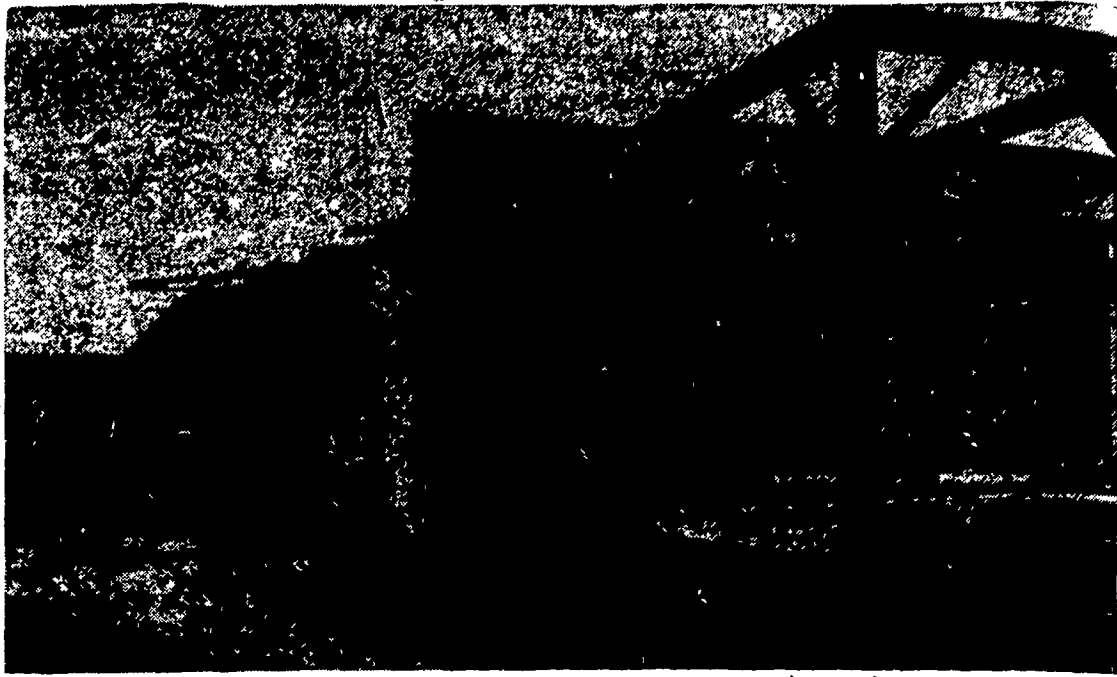
Grains received by railroad car or truck will go over the new two air super cleaner before going into the bins. A corn cutter and grader will turn out the finest cut corn for scratch grain mixtures. An oat crimper will be a new service in the county Farm Bureau operation. For the mixing of regular formulas which will be carried in stock, such as 14 per cent Dairy Feed, New Holland 22 per cent Laying Mash, 32 per cent Steer Supplement, Beef Supplement A, and others, a Gyro Whip Feder Dresser will assure high quality feeds by removing foreign material which could be harmful to live stock. Dust collectors are incorporated in the line in order to retain all the valuable feed ingredients. An automatic and fool-proof scales will weigh 100 pounds into each bag.

For the general and everyday operation, another time and labor saver is the Weigh Buggy. The exact amount of grams and ingredients for each formula will be drawn from the bins into this Weigh Buggy, and then dumped into the mixer. This eliminates the bagging, weighing and emptying the bags into the mixer. Bagged ingredients will be conveyed from the warehouse to the mixtures by belt conveyor. A portable-automatic scales can be placed under numerous overhead bins for the filling of 100 pound bags with grains, scratch feeds and others. For future improvement, provisions are made for adding a conveyor-blending system which would take part of the load off the two mixers.

This New Holland branch of the Lancaster County Farm Bureau will not only be a modern milling operation, display room and warehouse, but the architectural design of the new and practical buildings will make

Scheduled to be in operation around the first of the year is the new mill at the Farm Bureau Co. in New Holland. The office, 30 by 30, is at the left rear the warehouse in the center, and framework for

the 60-foot high mill is rising on the right. Dimensions of the new building will be 70 feet, four inches, by 173 feet in length. (Lancaster Farming Staff Photo).



New Farm Bureau Office



Here is the new office for the Farm Bureau Co. in New Holland, replacing a structure destroyed by fire last April. The new structure is much more roomy and

attractive. The office and warehouse were occupied the first week of August. (Lancaster Farming Staff Photo).

Christiana

Bowling Center

Luncheonette

(On Old Route 41)

Daily Special Platters

Homemade Soups

Foremost Ice Cream

them a desirable part of the town and community.

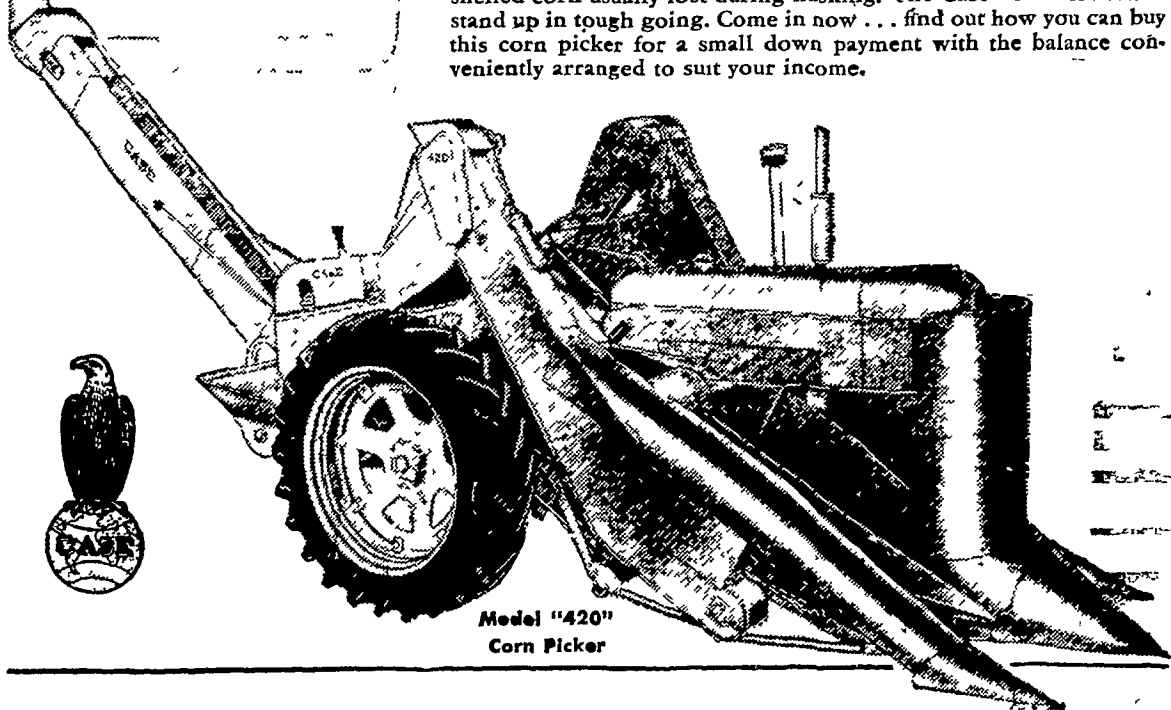
NEW MOUNTED 2-ROW CASE CORN PICKER

See the Newest Machine for the Thrifty Case "400"

... the 4-Plow Tractor That Set a World's Record for Fuel Economy

Attaching or detaching in minutes without any need for separate jacks, hoists or blocks since hydraulics do all the work, the new two-row mounted Case Corn Picker permits use of your tractor for other pressing fall-season jobs at any time.

You'll be surprised, too, at the savings this new picker will make for you. A new gathering design saves more ears, especially in down corn. Its chain-rake conveyor beneath full, 4-roll husking beds saves shelled corn usually lost during husking. The Case "420" is built to stand up in tough going. Come in now... find out how you can buy this corn picker for a small down payment with the balance conveniently arranged to suit your income.



PULL TYPE MODELS AVAILABLE

Herr's Implement Store
WEST WILLOW, PA.

A. L. Herr & Bro.
QUARRYVILLE, PA.

Kaylor Bros.
(Route 230) RHEEMS, PA.

Jared Stauffer
MARTINDALE, PA.

Walter Binkley & Son
LITITZ, PA.

Arthur S. Young Co., Inc.
KINZER, PA.

QUESTION :

What Institution In Lancaster County is currently paying

3% on its

Insured Savings and Investment Certificates ?

ANSWER :

FIRST FEDERAL
Savings and Loan
ASSOCIATION OF LANCASTER



25 North Duke St.

Phone 7-5898



Gilbert H. Hartley, Treasurer
Emlen H. Zellers, Secretary