

## Tobacco Here Moving Quick

(Continued from page 1)

sev, Long Island, Southeast Pennsylvania

**Vegetables:** Good supply, will reach peak within next few weeks; sweet corn good, quality best in past two years, those with later plantings urged to spray or dust with DDT on stalks and ears to combat corn borer and ear worm

**Tomatoes:** Hot days, warm nights, strong sun, ripening crop rapidly. If there is no more rain within the next week, the crop is assured as one of the best. William Rohrer, between Millersville and Central Manor on Blue Rock Road last week sent two trailer truck-loads for direct shipment to Camden. Need red ripe picking for best flavor, color, weight, need to supervise pickers closely

**Tobacco:** Maturing rapidly, one of heaviest crops in past 10 or 12 years. Be cautious, hang loosely, the stalks are big, sappy,

## Farm Women 14 Have 100 at Picnic

Approximately 100 persons attended the family picnic of Society of Farm Women 14, last week in Paradise Memorial Park. Games were staged for all age groups, and Mr. and Mrs. Robert Esbenshade showed pictures of their European tour.

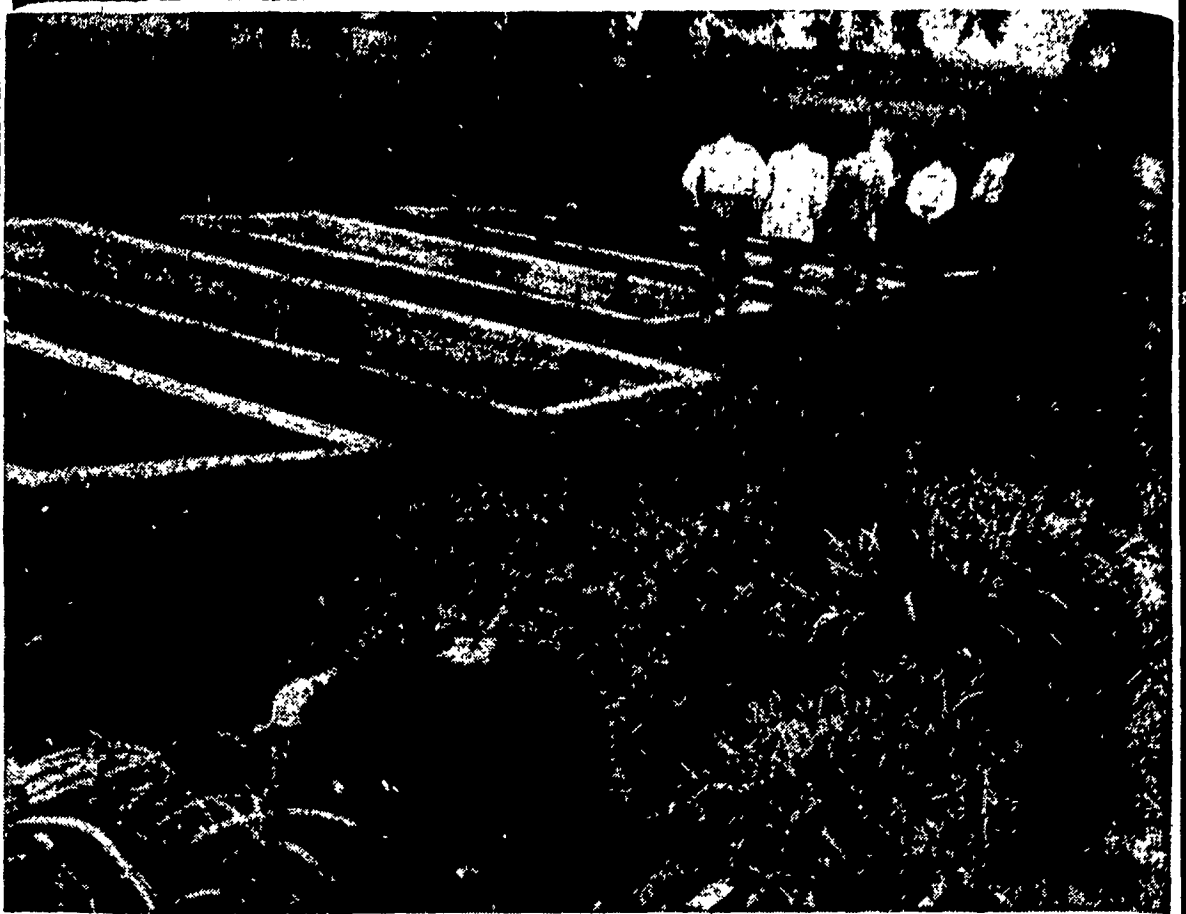
Members of Society 14 will entertain members of Society 17 at 1:30 p. m., Wednesday, Sept. 12, in the Strasburg Fire House. Members of Society 14 will provide the program, "My Talent."

Careful farmers cut down accidents

wet. It's advisable to leave space the length of your shed — 18 to 20 inches — to insure full length draft, may avoid pole burn. Some aphids going to town, and the green peach aphid, tough to kill, may feed a month or a month and a half in the shed, as long as the tobacco is green and sappy. If tobacco is not to be harvested for two weeks, use parathion, which has a 21-day residual clearance

The chance taker is the accident maker.

## Fish Ponds, Fish Plants



Some members of the Lancaster Chapter of the A.B.C. are shown passing by plants at Nolt's Ponds. Purely scenic is the waterwheel in front. (Lancaster Farming Staff Photo).

### SOUTHERN LANCASTER COUNTY COMMUNITY FAIR

QUARRYVILLE, PA.

Thursday—Friday—Saturday

Sept 19—20—21

Livestock-Entertainment-Parades-Harvest  
Queen Coronation-Music-Tractor Driving  
Contest

## Farm Calendar

(If you wish your Coming Events listed in these columns, write a card or letter to LANCASTER FARMING, Quarryville, Pa. Be sure to include name of sender.—Editor).

### SEPTEMBER

Sept. 9-16—Reading Fair  
Sept 11 — Fountain display, chimes, Longwood Gardens, Kennet Square, 8:15 p.m.  
Sept. 11-15—York Inter-State Fair.  
Sept. 12 — Farm Women 14 entertain Farm Women 17, Strasburg Fire Hall.  
Sept. 14 — Chester County Farm Women to Embreeville to improve house.  
Sept. 15-23 — Eastern States Exposition, Springfield, Mass.  
Sept. 18 — Chester County Farm Women 3 to Music Circus.  
Sept. 19-21 — Southern Lancaster County Community Fair, Quarryville.  
Sept. 19-22 — Elizabethtown Kiwanis Farm Fair.  
Sept. 26-29—Ephrata Farmers Day.  
Sept. 26-28—West Lampeter Community Fair.  
Sept. 30—Deadline to file for return of state taxes paid on farm tractor or farm machinery gasoline for year July 1, 1955 to June 30, 1956.  
Sept. 28-Oct. 6 — National Holstein Show, Waterloo, Iowa.  
Sept 29-Oct. 6—Dairy Cattle Congress, Waterloo, Iowa.

### OCTOBER

Oct. 2 — Fountain display, chimes, Longwood Gardens, Kennet Square, 8 p.m.  
Oct. 2-5—South Lebanon Community Fair, Iona  
Oct. 3-6—New Holland Farmers Fair.  
Oct. 4-6—Manheim Community Fair.  
Oct. 4-6—Unionville Community Fair.  
Oct. 6-13 — Fourth International Dairy Show and World Championship Rodeo, Chicago.  
Oct. 8 — International Junior Dairy Show, Chicago.  
Oct. 9-10 — Jersey, Guernsey, Brown Swiss judging, 4th International Dairy Show, Chicago.  
Oct. 10-13—Mt. Joy Community Exhibit.  
Oct. 11-12 — Holstein, Ayrshire, Milking Shorthorn judging, 4th International Dairy Show, Chicago.  
Oct. 15-26 — Two-week course in Farm Machinery and Tractors, by college of agriculture, The Pennsylvania State University.  
Oct. 18-20 — Dillsburg Community Fair.

Oct. 20-27 — American Royal, Kansas City, Mo., national Future Farmers of America convention.

Oct. 20—Methodist Men, Annual chicken barbecue, Quarryville Memorial Methodist Church, 5-8 p. m.

Oct. 22 — Fountain display, chimes; Longwood Gardens, Kennet Square, 8 p.m.

Nov. 23-Dec. 1 — International Livestock Exposition, Chicago

### JANUARY, 1957

Jan. 14-18—Pennsylvania Farm Show, Harrisburg.

### NOVEMBER

Nov. 3—County Convention, Lancaster County Farm Women's Societies.  
Nov. 3 — Feeder Calf Sale,

## 3 Machines in 1



You really reduce your new machinery costs with the Case Harvest-All that does three different harvesting jobs.

- 1 First, it picks and husks ears with a minimum of shelling into a trailed wagon.
- 2 At the same time it chops stalks and leaves into another wagon for low-cost feed or bedding.
- 3 Flipping a lever and inserting a deflector makes it a standard row-crop unit for chopping any silage crop.

This same base machine also mounts quick-change windrow pick-up or cutterbar head to chop hay or standing grasses and legumes for green feeding. Come in for all the cost-saving facts. Ask about the Case Time Payment Plan that lets you buy for a small down payment with the balance conveniently arranged to suit your income.



Herr's Implement Store Kaylor Bros.

WEST WILLOW, PA. (Route 230) RHEEMS, PA.

Walter Binkley & Son Arthur S. Young Co., Inc.

LITITZ, PA.

KINZER, PA.

Jared Stauffer

A. L. Herr & Bro.

MARTINDALE, PA.

QUARRYVILLE, PA.

## READY TO SERVE YOU WITH Hoffman Seeds FARM SEEDS

\*BARLEY  
"Wong"  
"Hudson"  
"Kenbar"

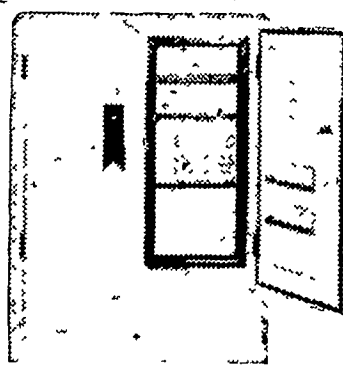
\*OATS  
"DuBois"  
"Leconte"

Elmer Brill  
Elizabethtown 7-5441  
Frank H. Bucher  
Lititz 6-9124  
C. B. Erb  
Landisville 2531  
Lester Erb  
Landisville 3216  
Martin H. Kraybill  
Elizabethtown 7-2696

\*WHEAT  
"Dual"  
"Pennoll"  
"Seneca"  
"Thorne"

\*RYE  
"Tetra-Petkus"  
"Balbo"

Jason H. Mellinger  
Strasburg OV 7-2383  
E. C. Seldomridge  
Quarryville 64-R-3  
Jonathan S. Shirk  
Intercourse 8-3111  
Levi M. Stoltzfus  
Morgantown 6-4359  
Edgar C. Umble  
Gap HI 2-4525



WILSON HOME FREEZERS

Big and rugged!  
built to farm requirements!

15 to 90  
cubic foot capacities

Get enough frozen storage space for better, year-round family eating—better business! Get a farm-size Wilson! Plenty of room to store family food of all kinds—and hold fryers, produce, etc. cold till you're ready to sell! Stop in and see the freezer line two manufacturers combined to make more convenient for you—Wilson!



Double the heritage of any other leading line!

WILSON BULK MILK TANKS 100 TO 700 GALS.

L. H. Brubaker

350 Strasburg Pike  
Lancaster