

## Inter-State Milk Mailing Out \$113,142

PHILADELPHIA, Pa. — Inter-State Milk Producers' Cooperative this week mailed checks totaling \$113,142 to approximately 6,356 of its members and former members covering one year's patronage refunds from that organization.

These refund payments are made annually, states Howard E. Jamison, treasurer of Inter-State, who reports that each member's refund check represents his pro rata share of the savings from the dues paid by the entire membership after taking care of the operating costs of the Cooperative.

These refunds, Mr. Jamison point out, differ distinctly from dividends in that they cover the refunding of unused money paid in to cover operating expenses and obligations, rather than earnings on an investment such as is the usual source of dividend payments.

Services given by Inter-State to its members, which are financed from these dues, cover a wide variety of milk marketing activities and quality control work, including a market guarantee program whereby members are protected from loss of market and from failure to receive payment for milk marketed for them by the Cooperative. More than \$5,700 was paid out under these guarantees during the past year, Jamison reported.

The refund currently being made by Inter-State to its members distributes the unused dues paid by them during the fiscal year ending August 31, 1949. Operating on a seven-year revolving capital basis, the savings of the intervening years provide operating capital and a reserve fund for the market guarantees extended to each member of the Cooperative.

This is the eleventh annual refund made by the Cooperative, which was organized in 1936. Total distribution of refunds has now reached \$829,373.

In addition to the refunds made annually on the revolving

## Two Personnel Shifts At Eshelman Feeds

John W. Eshelman & Sons, Lancaster, has announced two changes in personnel assignments to be effective Sept. 1, 1956.

H. R. Eshelman, Jr., Vice-President of the company will transfer from Circleville,



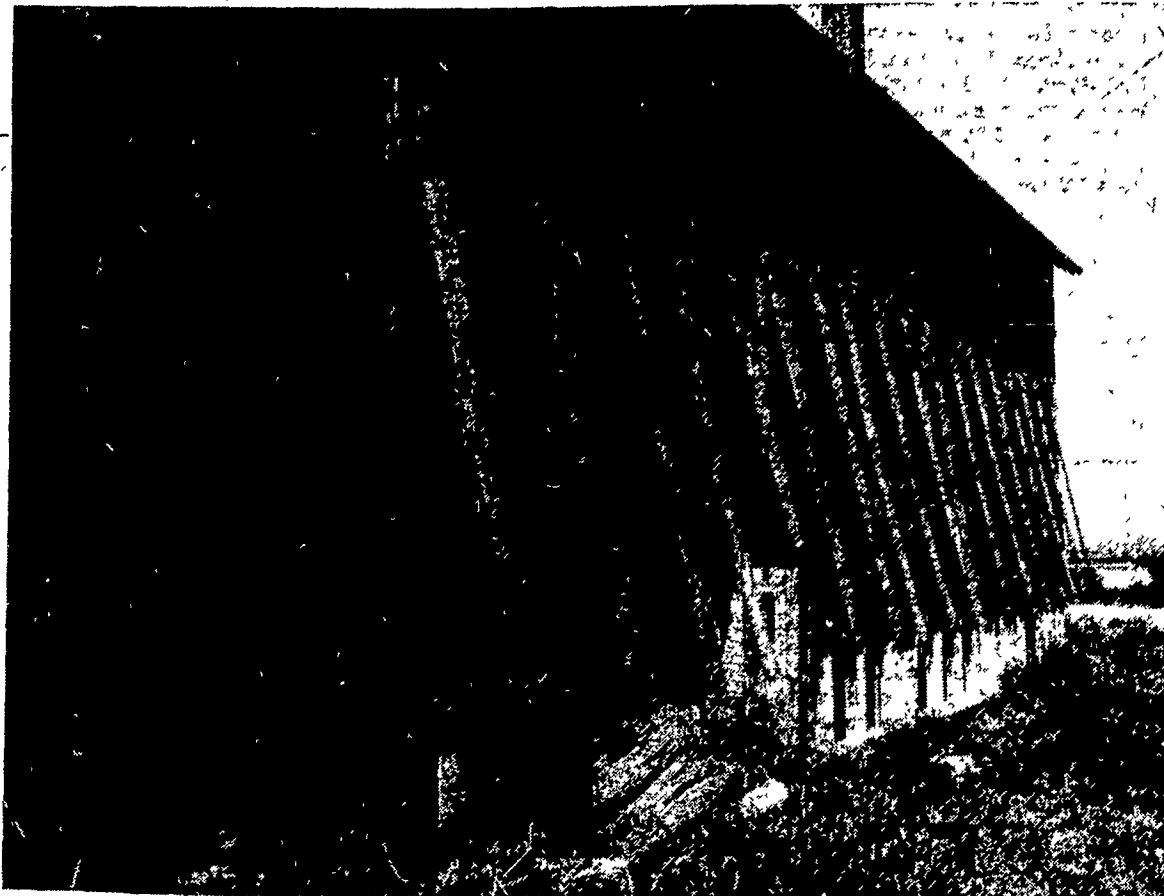
Ohio to Lancaster and assumes duties at the firm's headquarters. He will co-ordinate policies at the various

ously located Eshelman mills at Circleville, Ohio; Tampa, Fla.; Sanford, N. C. and Chamblee, Ga.

Mr. Eshelman graduated from Yale University in 1936, started with the company at Lancaster, covered a sales territory in Western Pennsylvania, then managed a company-owned grain elevator at Washington, C. H. Ohio. From 1942-1945 he served in the U. S. Navy. After his discharge, he was assigned to Eshelman's Circleville purchasing department and in 1946 was appointed manager of the Circleville plant.

Mr. Eshelman will be replaced by D. J. Carpenter as general manager of the Circleville plant. Mr. Carpenter attended the University of Michigan, started with John W. Eshelman & Sons in 1930 in the production department, and has had broad experience in all phases of the company's operations. He is presently assistant general manager of the Circleville plant.

## Ventilating Tobacco



Lancaster County tobacco is ventilated by slats opened alongside the barns, as shown in the photo above taken at the experimental station near Landisville. Farmers

here ignored Labor Day as a holiday to move the heavy 1956 crop into storage. (Lancaster Farming Staff Photo).

ing basis, refunds are also made upon proper authorization to the estates or heirs of deceased members covering all

such payments that would ordinarily be made in later years on these memberships. Distributions in this category

totaling \$6,029 have been made during the past year on the accounts of 116 deceased members.

Lancaster Farming—13  
Friday Sept. 7, 1956

## Fulton Grange Planning Minstrel Show, Golf Party

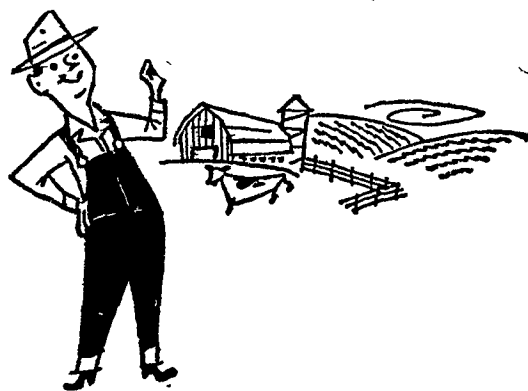
During a meeting of Fulton Grange No. 66 Monday a week ago at Oakryn Grange Hall with Master Charles G. McSparran in charge, two were named to select a play to be presented by the Grange, Miss Mabel Brabson and Miss Jennette McCummings. A committee was also named to plan a Minstrel Show, Russell Hartsoe, Carl Eastridge, Clair Murphy and Edward James.

The Home Economics committee reported that a profit of \$364.00 had been received from the Chicken barbecue.

The Youth Committee is planning a miniature golf party September 18th at Horse Shoe Grill.

During the literary program the sewing and cooking 4-H clubs of Fulton Township and Little Britain Township presented some of their work during the summer. James Bradley gave a talk on agriculture and projects boys in 4-H had. Dottie Black gave a demonstration on flower arrangements. Miss Betty

Ethel Halsey and Elaine Tindall described some of the cooking classes. The sewing class presented a fashion show with Janet Ankrum and Nancy Housekeeper as narrators.



# ATTENTION! ALL FARMERS!

52 Weeks of



## ONLY \$1

It's Real Big News For  
Farmers and Their Families

Order Your Subscription Now!

PUBLISHED EVERY FRIDAY....

Mail This Coupon  
Today!

YOU PAY  
LESS THAN  
**2c**  
PER WEEK

Lancaster Farming  
QUARRYVILLE, PA.

1 year \$1.00  
52 Issues

Please put my name on your list of charter subscribers for a one year subscription.

Enclosed find check, cash, or money order for \$1.00  
 Bill me later

Name \_\_\_\_\_  
(Please Print)

Address \_\_\_\_\_