

## Leary Prange Herd Leader In July DHIA

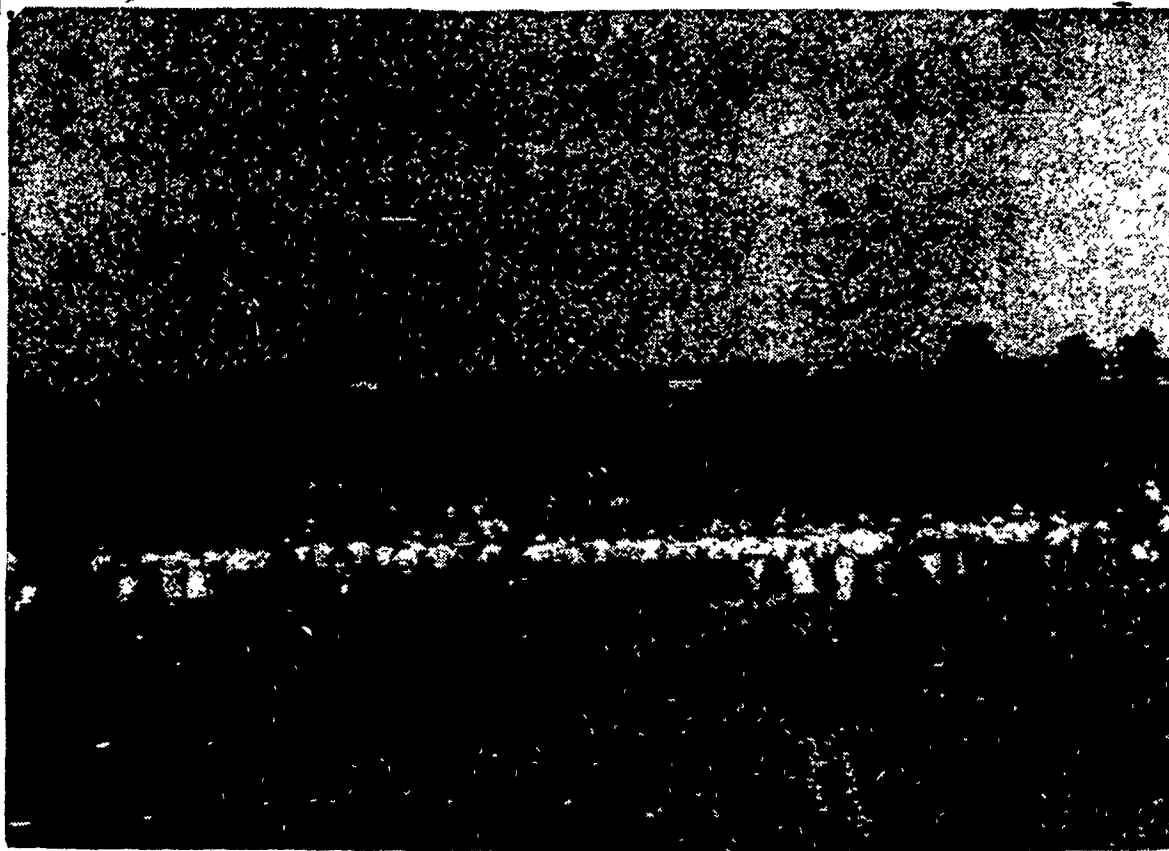
The Progressive Dairy Herd Improvement Association Reports that there were 2,901 cows in the 96 herds of the Association. There were six herds over 35 lbs of butterfat, with the leading herd belonging to Leary Prange and consisting of 35 head of Holsteins and Guernsey cows.

Leary Prange	1154	41.9
T. Barnard Walter	837	39.0
Earl Umble	1064	38.5
Henry Landis	843	37.1
Everett Cowan	932	36.9
Harry Hostetter	1008	35.6

There were 19 cows over 70 lbs of butterfat, with the leading cow belonging to Leary Prange. This cow, a 7-year-old Registered Holstein, produced 2,285 lbs of milk and 891 lbs of butterfat with a 39% test.

On Sept. 1, a fifth tester will be started in this area doing Owner Sampler Testing. To date there are several openings for herds. Further information may be obtained by contracting any officer or tester of the association.

## IHC Field Day Crowd



More than 1500 persons gathered on the John Landis Farm Tuesday for the Big IHC Field Day sponsored by 12 IHC Dealers from Lancaster and Western Berks County. Here is a view of the

crowd, watching the Parade of Progress, and units — there were 14 operating — at work in the field of the R3 Lancaster farm (Lancaster Farming Staff Photo)

## Lancaster Farming—3 Friday, Aug. 31, 1956

### EGGS

PHILADELPHIA Aug. 29 — (USDA) firm Prices advanced on most grades. Advance buying increased for week-end holiday requirements. Supplies of large top quality were barely sufficient but medium were liberally available.

Wholesale selling prices minimum 10 per cent AA quality. Large 45-48 lb white 50-51, brown 49-50, medium white 32-33, brown 31-32. Extras, min 60 per cent A qual. Large 45-50 lb. white 40-41, mixed 38-39, medium white 31-32, mixed 30-32, mixed 30-31. Standards 31-32. Checks 26-27.

Receipts Aug. 28 - 3,400 cases all by truck.

### Inflated Statistic

There are more than a million women in the United States who are overweight. Those are round figures, of course — The Centerville (Iowa) Iowegian.

### 24-Hour Service

1956 AUTO TAGS  
EDWARD G. WILSON  
Notary Public  
16 S. Lime St. Lancaster, Pa.

### SPECIAL THIS WEEK

1200 SILVER CROSS 9c  
1500 WHITE CORNISH CROSS 12c  
Heavy Seconds . . . 4c  
Phone or write today  
**REICH**  
**POULTRY FARM**  
R1 Marietta Ph. 6-7123

**CRIB YOUR CORN this LOW COST WAY**

**UNICO Corn Crib**

All-Metal Construction

- \* Rat & Vermin Proof
- \* Fully Approved for CORN LOANS
- \* Easy Filling—through vent cap

4 SIZES—550, 800, 1100, 1500 Bu.

**FARM BUREAU**

Dillerville Road, Lanc.  
MANHEIM-NEW HOLLAND  
QUARRYVILLE

## Old-Time Threshing Days Live Again On A. R. Herr Farm, Colerain Twp.

By LF Staff Reporter

Powered by a Peerless steam engine, an old-time threshing demonstration was held recently on the Abram R. Herr farm in Lancaster County's Colerain Township.

Threshing took place just opposite Hope School, and power was supplied by a 50-horsepower Peerless steam engine of 1925 vintage. The steam engine, owned by Mr. Herr, was operated by Elmer E. Adams of Mechanics Grove,

and his nephew, Horace Adams of Providence, Md.

Lined up in the same field — to show how harvesting methods have changed — were four self-propelled combines and three pull-type units.

Mr. Herr started steam threshing at an early age, and when just a boy ran his father's engine, delighting in firing the engine, especially in the cool days of fall. The smell of smoke still lingers in his memory.

At the age of 18, Mr. Herr started branching out on his own, running a thresher on "the halves" with Harold Swisher, and at 20 bought his own gasoline-powered threshing outfit. He gradually increased the number of units he ran until he had seven in operation.

Then came the "combine," and the switchover to the method of threshing preferred by many farmers. Back-breaking duties were eliminated for the most part.

Today he still personally prefers the old-time method, which, he believes produces a cleaner job and better grade of wheat and he uses the old-timers whenever he can on the four farms he operates.

Still the memory of smoke and steam lingers.

**Fertilizers  
Farms Gardens  
Lawns  
Cocoa Bean Shells  
Organic Plant Food Co.**

GROFFTOWN RD.  
Ph. Lancaster 2-4963

## FORAGE HARVESTERS

- ★ N.H. PTO with row crop att.
- ★ Papec w/motor, cutter bar, & row crop
- ★ Dearborn PTO w/row crop
- ★ AC mounted 2 row corn picker

Oliver Superior 13 x 7 single disc tractor  
Grain drill w/power lift & band seeder.

**PAINT CLOSE OUT SALE**  
PTS. 49c-QTS. 89c-GALS. \$2.99

A few specials left from our remodeling sale on electrical appliances & freezers. Also good used refrigerators & automatic washers.

**L. H. Brubaker** Lancaster 37607  
Strasburg OV 72305  
350 Strasburg Pike Lancaster

## Reading Fair Opens Sept. 1, Deadlines Set

READING, Pa. — The Reading Fair opens soon, and the usual press of eleventh hour details confront fair prexy John S. Giles and his associates.

Of paramount importance this week are closing dates for entries in two important fair contests: The Miss Reading Fair beauty contest which has its entry deadline Saturday (Sept. 1), and a new "Farm Maid Contest" in which entries close Friday (Aug. 31).

Another important date on the pre-fair calendar is next Tuesday (Sept. 4). On that day, the grandstand reserved seat ticket sale opens at the fair's downtown ticket office, located at 117 S. 5th St., Reading. Reserved seat tickets for all performances of the fair will be available there.

The fair, one of Pennsylvania's largest, operates Sunday, Sept. 9 through 16, eight days and seven nights.

## LOANS

For any farm purpose  
Made the farmer's way

**LANCASTER  
PRODUCTION  
CREDIT ASS'N.**  
36 E. Chestnut St.  
Lancaster, Pa.  
Ph. Lanc. 3-3921



**LOOKING  
FOR  
RESULTS?**

**Try WIRTHMORE  
HI-ENER-G 16**

Here's what it will give you:

- ★ Greater returns over feed cost.
  - ★ Good performance in any climate, in pens or cages.
  - ★ Labor savings—easy to feed—a complete ration.
- Why not try it and check the results for yourself?

## WIRTHMORE FEEDS

**Glenn H. Herr**  
Manheim RD1,  
Ph. Landisville 3547

**Clem E. Hooper**  
Intercourse  
Ph. 8-3431

**Hiestand, Inc. LeRoy M. Sensenig**  
Marietta  
Ph. 6-9301

**Hinkletown**  
Ph. Ephrata 3-2009

