

Pomona Grange Holds Picnic at Oakryn

Lancaster County Pomona Grange held a picnic and short business meeting at Oakryn Grange Hall Saturday evening. A resolution was approved to have a plaque placed in the State Grange Headquarters at Harrisburg honoring John McSparran, a past State Grange Master and active in the local Fulton and Pomona Granges. A resolution was also favored concerning the milk control as it is now set up, rather than

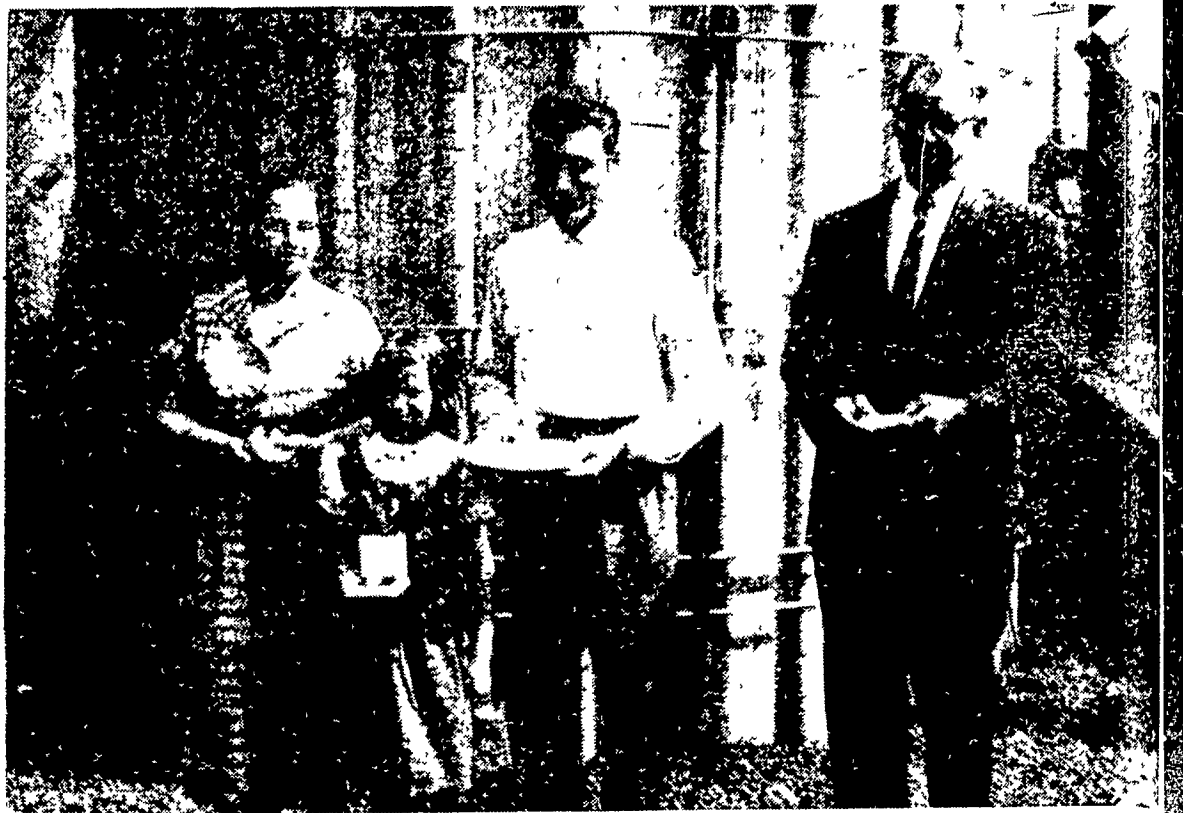
AUTO HIT 3 BEARS

Game Protector William Denton considers it only routine to report eight deer killed on highways in his Clarion County district in June. But he called it quite unusual when three bears were hit by autos in that area in the same month.

permit the non-modern dairyman to be raised for milk payment over the dairyman who has his barn modernized. Mr. and Mrs. Melvin Boyce were named delegates to the State Grange at Erie in October.

The next meeting will be with the Ephrata Grange at Bricker-

Judging Contest Winners



Winners of the Guernsey cattle judging contest at the County Association Field Day on the Frank R. Hershey farm, R5 Lancaster, are shown above, left to right, Mrs. Melvin B. Stoltzfus, R1 Ronks, ladies' division, silver salt and pepper shakers;

her daughter, Nancy, winner of the junior division, a wrist watch; Jacob Kreider, Kinzers, adult division winner, silver creamer set, and Herbie Ferguson, Kirkwood (Lancaster Farming Staff Photo).

Serving Lancaster County, Since 1841

IF YOU HAVE A FARM PROBLEM
CONSULT THE "COUNTY BANK"

Stanley M. Musselman,
Manager of our Farmer Relations
Department at your service.

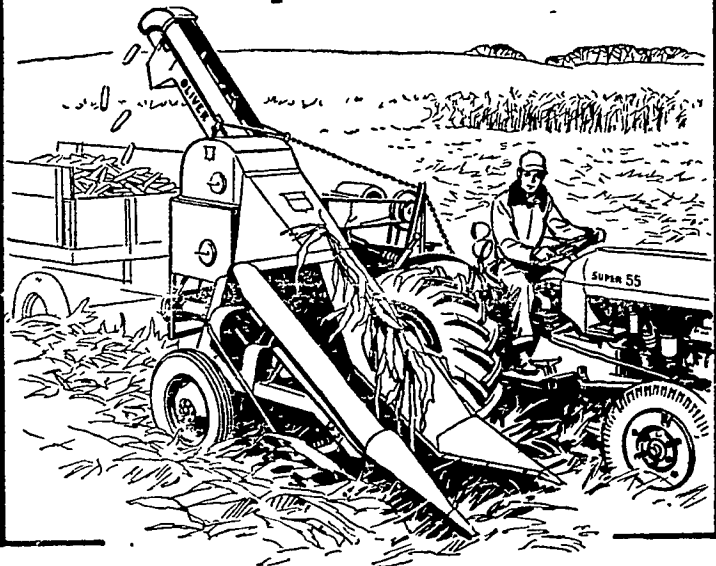


The Lancaster County National Bank

23 E. King St. — Cor. Prince and James Sts. — 138 N. Queen St.
Member Federal Deposit Insurance Corporation

NEW OLIVER Semi-Mounted ONE-ROW PICKER

Best for 3-point hitch tractors



Now you can pick your bumper yields and save corn every year with your 3-point hitch tractor. New Oliver Model 6 gives you mounted picker-type "hitch-up-and-go" convenience.

Adjustable snapping roll spacing lets you adjust the gathering unit to fit every crop condition. Lets you clear the gathering unit from the tractor seat... on the go. Long snapping rolls and "live" points get the down and leaning corn. Swayback center elevator reduces shelling, increases capacity of the gathering unit.

Roller-type gathering chains are another Oliver "exclusive"... twice as strong, wear three times as long as ordinary kinds.

If you're the fortunate owner of a new Oliver Super 55 or similar 3-point hitch tractor, be sure to see the new Oliver Semi-Mounted Model 6 picker.



E. L. Herr
Peach Bottom

N. G. Hershey & Son
Manheim, R.D. 1

Farmersville Equipment Co.
Ephrata, R.D. 2

Chas. J. McComsey & Sons
Hickory Hill, Pa.

Daughter and Mother Best as Guernsey Judges

Mrs. Pauline (Melvin) Stoltzfus, R1 Ronks, and her daughter, eight-year-old Nancy Tuesday, topped the ladies' and juniors' judging division of the Lancaster County Guernsey Breeders Association Field Day at the Frank Hershey farm northwest of Witmer.

Little Nancy scored 292 points out of a possible 300, her mother 285. Nancy received a salt and pepper shaker.

Leading the senior division, and receiving a cream and sugar set, was Jacob Kreider of Kinzer, with 296—highest score made during the event attended by 125. Second high was Herbie Fergu-

son of Kirkwood with 295. His prize was a halter. Placing third was Grant Miller, Donegal High vocational instructor with 293, and fourth high, Clyde Brenaman, R1 Willow Street, with 291.

Official judge was Al McKay of the American Guernsey Cattle Club.

Donald G. Herr, R2 Quarryville, and Donald M. Herr, Ref-ton, presented their program on control of internal parasites in cattle, a program they hope to present at the national meeting in Chicago. Al Stag, Westminster, Md., talked on livestock nutrition.

Nov. 16 has been designated for the annual county meeting at Rhoad's Tavern, Quarryville. President Raymond F. Witmer, R1 Willow Street, announced.

Solanco Name Held For Guernsey Herd

PETERBOROUGH, N.H.—F. S. Dryness of Quarryville, Pennsylvania has reserved the prefix "Solanco" for use in naming his purebred Guernsey cattle, according to the American Guernsey Cattle Club.

This new prefix has been placed on file with the Club, and from now on Mr. Dryness will have exclusive use of it. In fact, "Solanco" will be his trademark in the Guernsey world.

The American Guernsey Cattle Club is a non-profit agricultural registry organization serving some 40,000 purebred Guernsey breeders from coast-to-coast.

Rough, Tumble Museum Likely

(Continued from Page One)

antiques of the farm scene.

Thousands turned out for the reunion, and saw the old-timers in action, saw mills, steam threshers, horse treadmills and grain separators, saw the huffing and puffing engines test their own strength on fanning mills and dynamometers.

Officers were named a memorial service held for the founder of this Lancaster County based national organization, Arthur S. Young, who served long as association president. His son, Everett Young was named new president.

Others elected were A. D. Mast, Lancaster, first vice president; Roy H. Herr, East Petersburg, second vice president; Jane Y. Brackbill, RD Kinzers, secretary-treasurer; Ralph Eby, RD Paradise, solicitor; E. L. Ritzman, Enoah, Chaplain, Charles Rice, New Holland, publicity director.

Seven directors were named, Clarence E. Hershey, Paradise; Willis Hershey, RD Paradise; William Knott, Philadelphia; William Brackin, RD Parkesburg; Arthur Kauffman, Kinzers; Ralph Green, Elizabeth, N. J., and C. J. Hochstetler, Bareville.

It is estimated between 12,000 and 15,000 attended the three-day celebration. Only men over 21 registered, and admission they paid is being applied to the construction fund for the new museum. By Saturday more than 5,000 registration cards had been issued.



...a low-cost P.T.O.
2-ROW CHOPPER
Even costs less than some 1-Row Choppers!

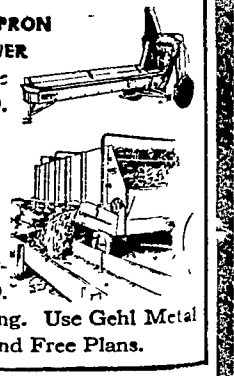
Prove to yourself what farmers helped Gehl prove—that this new Gehl 2-Row "Chop-All" was just what they wanted. Plenty of capacity to handle tall corn. Ideal for emergency cutting to save crops after frost or drought. Saves time, travel, wear and tear on tractor and equipment. It is the custom operators' chopper at farmers' prices. Increases custom harvesting income. Motor available if desired.

Only Gehl gives you 4 attachments with the famous "Quick Switch"—windrow pick-up, 5 or 6-foot mower bar, 1 or 2-Row Attachment for corn, sorghum and other row crops. More farmers own Gehl "Chop-All" Harvesters than any other independent make.



NEW GEHL APRON FEEDER BLOWER has exclusive direct P.T.O. drive.

MAKE YOUR OWN BUNK FEEDER BOX... all-purpose, P.T.O. side-unloading. Use Gehl Metal Parts Kit, and Free Plans.



Come in and see it—Today!

Conestoga Farm Service

Quarryville Ph. 282

THERE'S NOTHING BETTER THAN A GEHL!