

Interested Spectator



Deep was the dust and warm the sun, but nothing would faze this young spectator while log-sawing, with steam-driven power, held his attention at the recent Rough and Tumble Steam Engineers' reunion in Kinzer. (Lancaster Farming Staff Photo).

Model - Center of Interest



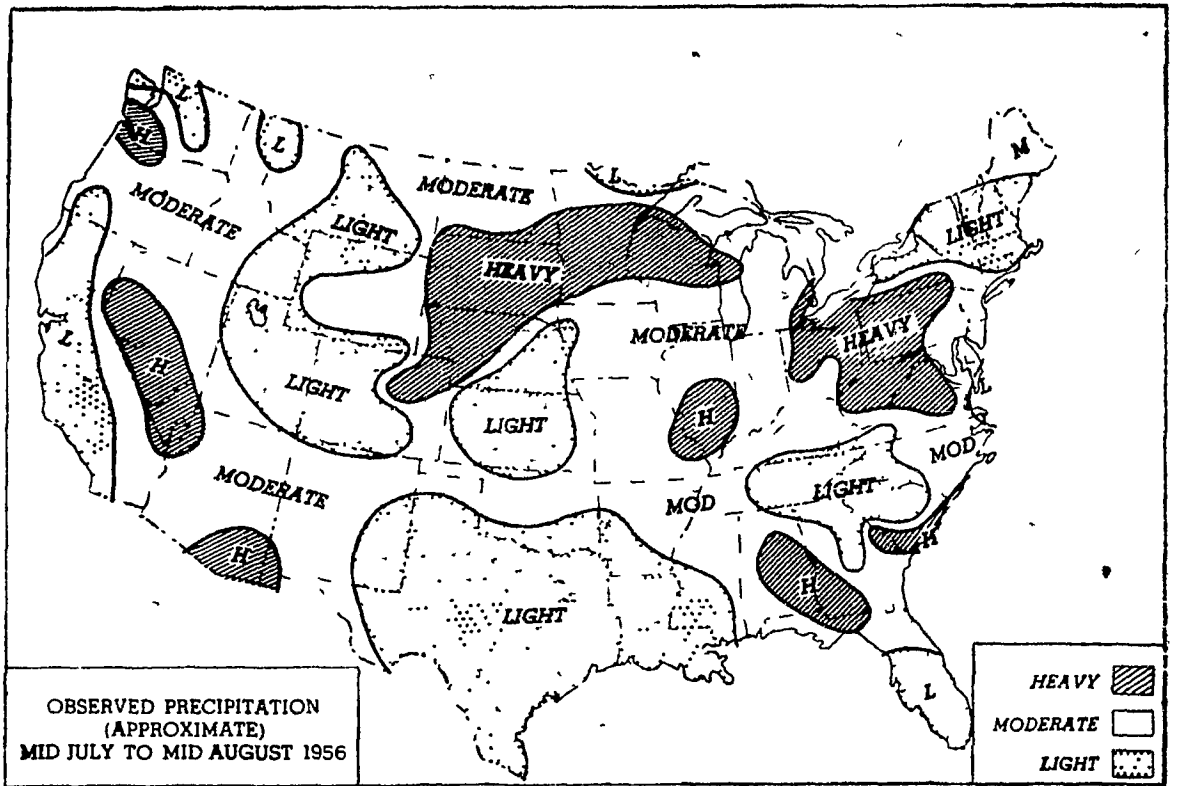
One of the most attractive exhibits for the younger — and older generation — at the Steam Threshers' reunion in Kinzer was this model steam engine and baler-thresher at the Groffdale Steam Threshers' Hobby booth. (Lancaster Farming Staff Photo).

Brother vs. Brother



Still uncertain who the winner will be, John (right), knows he's in first position, his brother in reserve at the Garden Spot Baby Beef Show. The R2 Quarryville brothers wound up this way when purples were awarded, John with the grand champion, Ernest in reserve. (Lancaster Farming Staff Photo).

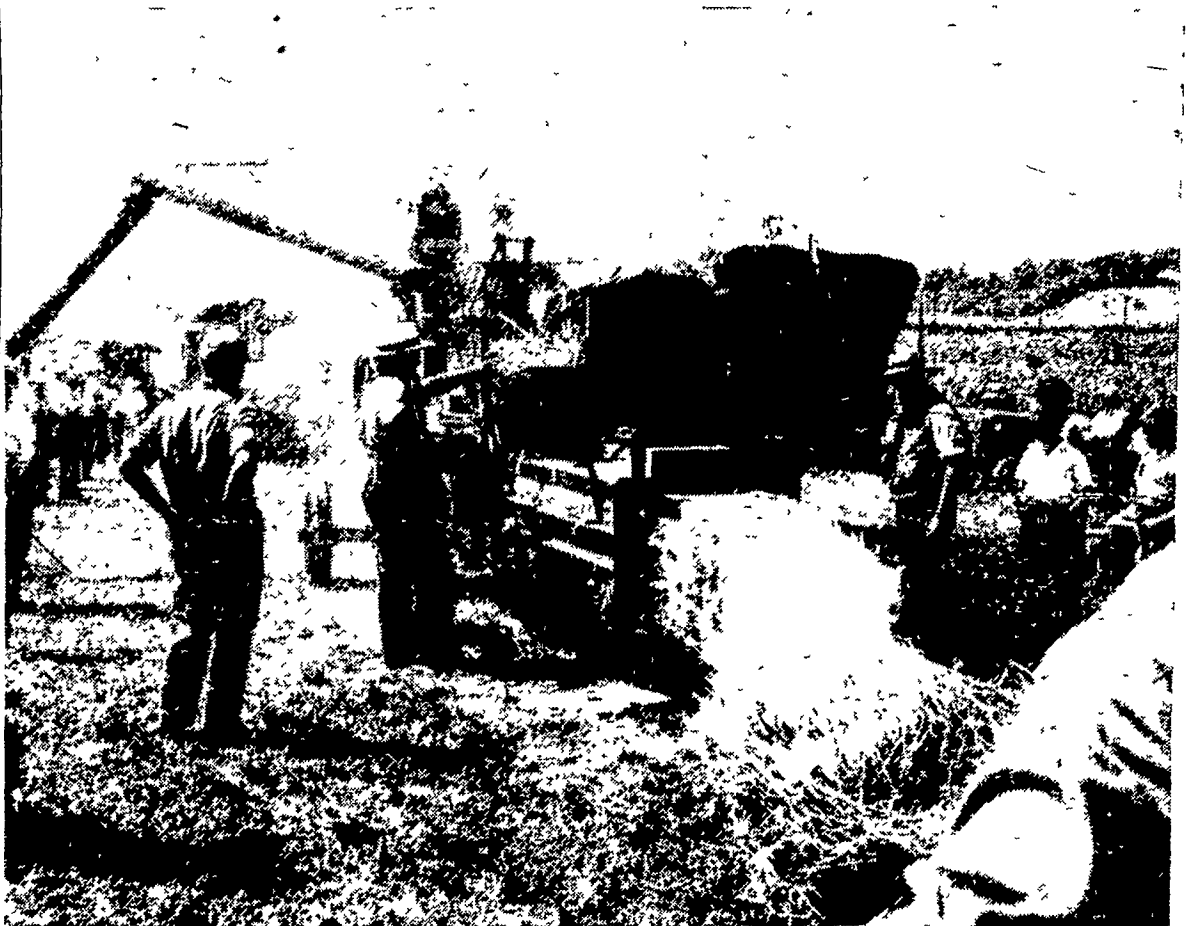
Precipitation - Preceding 30 Days



This chart at the right shows the general nature of the total precipitation which fell during the preceding 30 days. Precipitation is expressed in three classes: light,

moderate, and heavy, and the precipitation amounts which determine these classes are obtained from an analysis of many years of record at many stations.

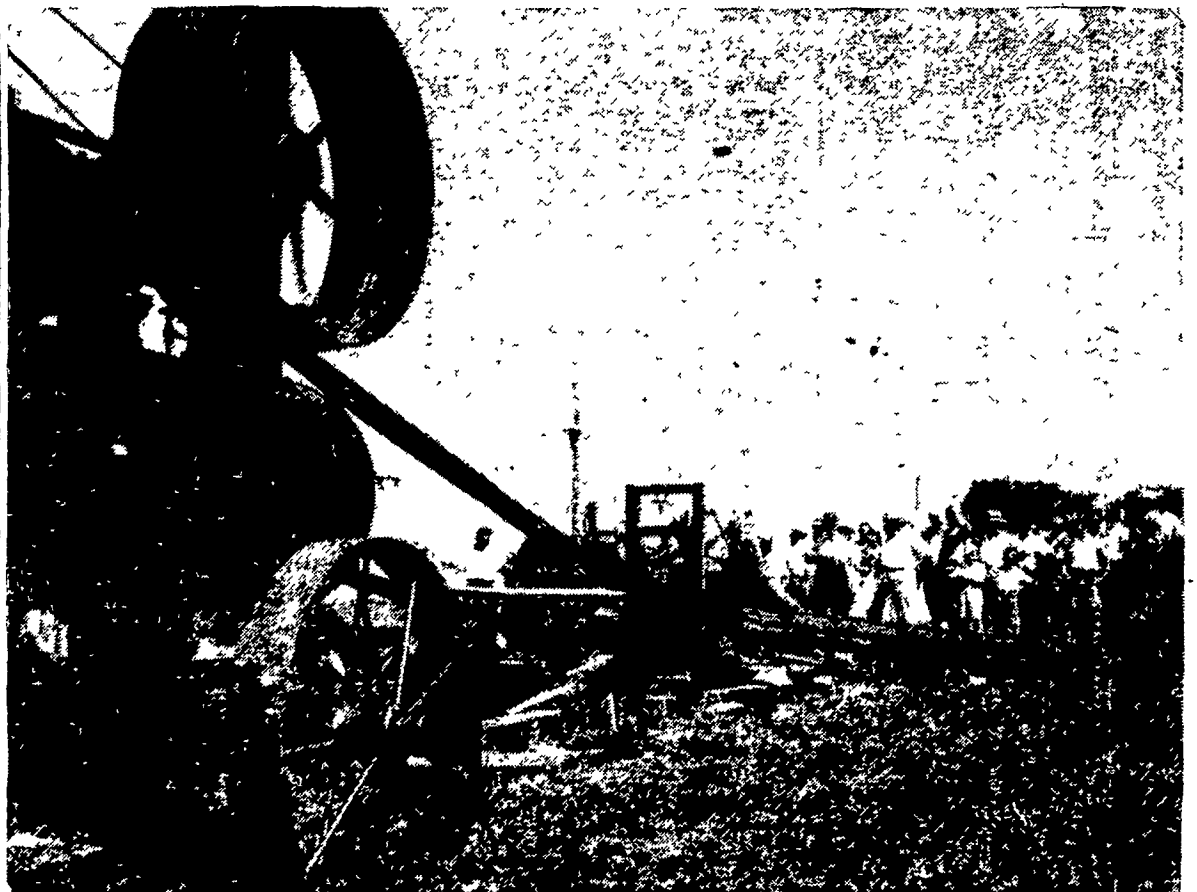
Thresher-Baler at Kinzer



Old-timers lived again the days of the steam thresher-baler at the annual reunion of the Rough and Tumble Engineers

at Kinzer last weekend. Here is one of the relics that renewed many a memory. (Lancaster Farming Staff Photo).

Old-Time Sawmill in Action



Whirling governors, whirling flywheels, and whirling sawblades, the smoke and screech that accompanies such — that's the scene above, as an old-time sawmill

goes into action at the convention of the Rough and Tumble Engineer's at Kinzers last weekend. (Lancaster Farming Staff Photo).