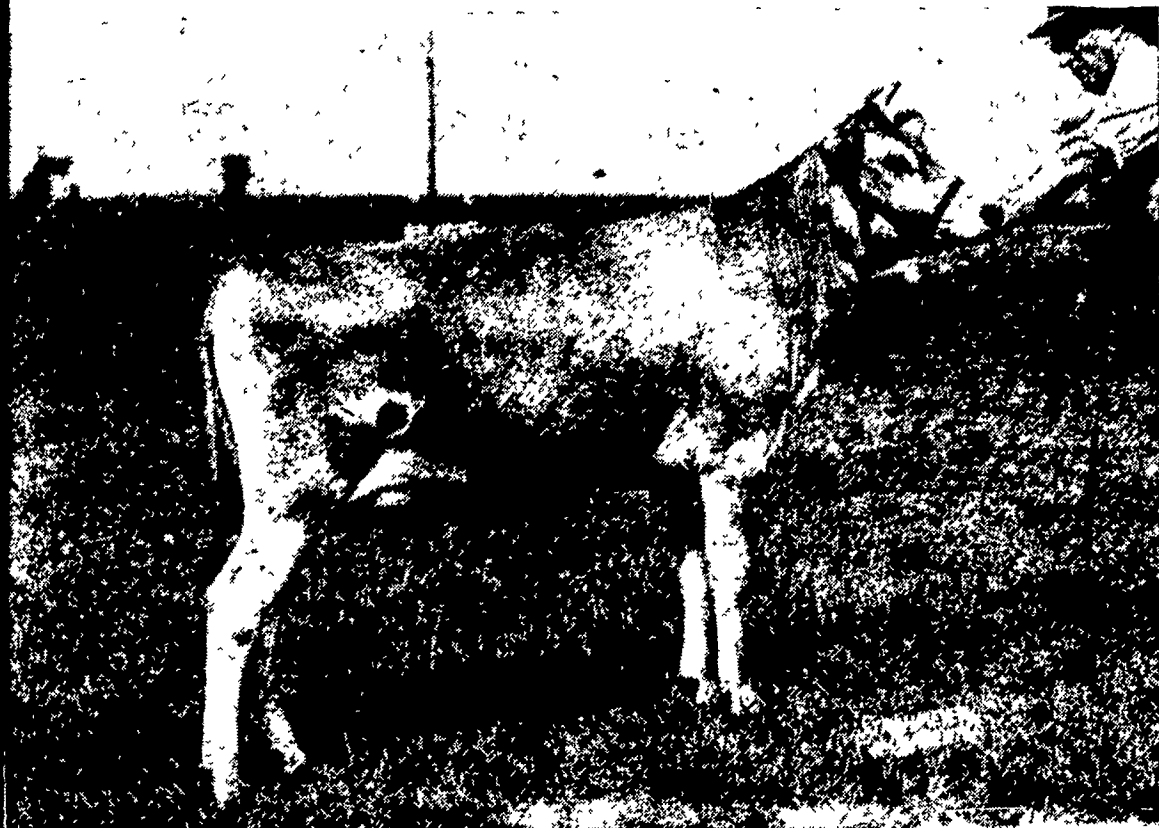


Junior Champion Jersey



Junior champion in the Jersey division of the recent SPABC cattle show was Roseland Czar Helen, a Dec. 27, 1954 heifer shown by John Stiles & Sons, R1 Mt. Airy, Md. Her sire was SJ23 Imp. Roseland Czar, her dam, Heir's Duchess of Jericho.

Solvent Cleaner Eases Problems of Painting

Take the easy way to prepare surface for painting. If the surface is smooth, use a solvent cleaner to cut the glossy surface and make "tooth" for the next coat.

Doris L. Snook, extension home management specialist of

the Pennsylvania State University, points out that the use of a solvent cleaner eliminates the need for using abrasive paper, steel wool, or undercoat.

Solvent cleaner dries instantly and paint may be applied at once. A number of brands of cleaner are available.

HEARTLESS ROBBERS

Oklahoma City, Okla. — The robbers who accosted a local man recently certainly didn't have any feeling. They took the man's billfold, wristwatch, and diamond ring. Not satisfied, they also took his shoes, commenting, "They just fit fine."

Italy Authorized to Purchase U.S. Tobacco

Washington (USDA) — The U.S. Department of Agriculture has announced issuance to Italy of an authorization to finance purchase of up to \$2,200,000 worth of tobacco from United States suppliers under Title I of Public Law 480.

The authorization, No. 20-08, was issued pursuant to an agreement between Italy and the United States announced on July 6, 1956. It provides for the purchase of approximately three billion pounds of unmanufactured tobacco which must have been produced in the continental United States or Puerto Rico in 1955 or prior crop years.

Sales contracts entered into between suppliers and importers on or after August 2, 1956 and on or before August 31, 1956 will be eligible for financing. Delivery will be to importers, by a vessel, United States ports on or after Aug. 2, 1956 but not later than October 1, 1956.

The tobacco will be purchased by the Amministrazione Nazionale di Stato, Rome, Italy.

ONE WAY TO DO IT

Renews, Nfld — After digging a hole 18 feet deep, trying to get water, a man here got disgusted and left. Returning to fill in the hole, he found his brother's horse staring up at him unhappily. Faced with the problem of getting the horse out of the well, the two men came upon a happy thought. They slowly dumped clay into the hole and the horse cooperated by stomping it down. When the hole was filled, the horse was on top of the heap and casually strolled away.

The President will have little trouble attending the G O P convention in California if he can fly to Panama City for an international gathering there, earlier.

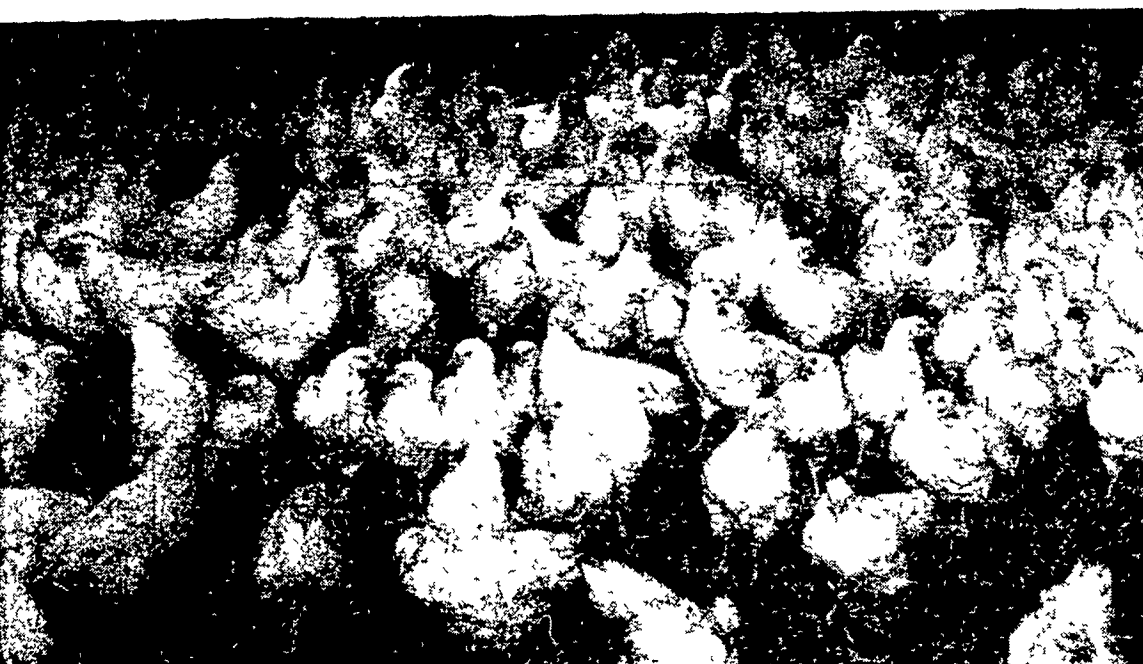
Lancaster Farming—7
Friday, Aug. 17, 1956

Forest Pest Control Campaign Advancing

Washington — (USDA) — All control work on forest insects and diseases has been consolidated into one division of the Forest Service, the U.S. Department of Agriculture has announced.

This new division of Forest Pest Control will be responsible for the department's activities in controlling insect infestations, disease epidemics, and white pine blister rust control on Federal, State, and privately owned forest lands. Warren V. Benedict, formerly in charge of the white pine blister rust control program, will head the new division.

But since most of the work will be done cooperatively with State foresters and other public agencies or private land owners, the division will be under the general supervision of William S. Swingler, assistant chief of the Forest Service in charge of

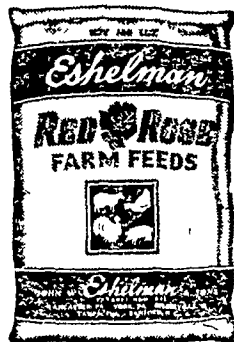


For more POULTRY PROFIT

feed

Eshelman
RED ROSE
Poultry Feeds

Every Red Rose Poultry Feed is flock-Tested, scientifically compounded and balanced to give every bird in your flock all the nutrients needed for vigorous growth and production.



Red Rose Poultry Feeds are formulated from highest quality ingredients. Combined with years of manufacturing experience and the science of Red Rose research they give better results . . . and help you feed with more satisfaction, and more profit.

RAISE YOUR FLOCK ON RED ROSE . . . START TO FINISH . . . AND GET MORE PROFIT FROM YOUR FEED DOLLAR!

MOUNTVILLE FEED SERVICE
R D 2, Columbia, Pa

LEROY GEIB
R D 2, Manheim, Pa

FARVIEW ROLLER MILLS
R D 1, Narvon, Pa

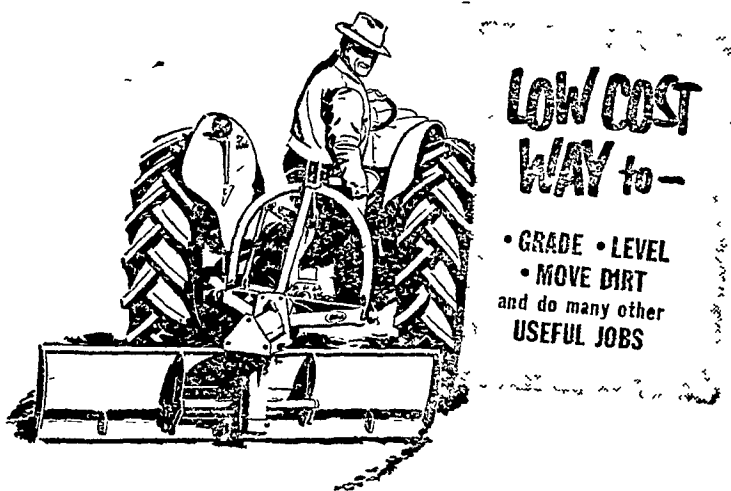
I. B. CRAYBILL & SON
Reiton, Pa

JOHN H. BONHOLTZER
R D 4, Lancaster, Pa

SNADER'S MILL
R D 1, Stevens, Pa

JOSEPH E. GOOD & SON
R D 1, East-End, Pa

WALTER & JACKSON, INC.
Christiana, Pa.



LOW COST
WAY to—

• GRADE • LEVEL
• MOVE DIRT
and do many other
USEFUL JOBS

FORD

Adjustable Rear Blade

Here is a rear mounted blade that will help you to perform wide variety of useful jobs, easily and at low cost. It attaches readily to the 3-point hitch of your Ford Tractor adding to its convenience and utility. The blade can be offset, tilted, adjusted for pitch and angled to either front or left. It may be operated straight behind, whichever is best for a particular job. It may also be reversed for such jobs as backfilling or for working up to obstructions which the tractor can't cross. A gauge wheel, ditching point and end plates are provided separately.

See us NOW for the best in low-cost labor saving equipment

HAVERSTICK BROS.

Columbia Pike Lancaster Ph. 2-5722

ELIZABETHTOWN FARMERS SUPPLY INC.

Ph. 7-1341

SAUDER BROS.

New Holland Ph. 1-8721

ALLEN H. MATZ

Deer Park Ph. 2-6524

CONESTOGA FARM SERVICE

Quarryville Ph. 28 2