

Thursday, Aug. 9 Broiler Auction: Prices Drop Three-Quarters of Cent

Lancaster Poultry Exchange (Rohrerstown, Pa.) (Sales Report. Sale 170, Thursday, Aug. 9, 1956) — Prices continued minor declines at the Lancaster Poultry Exchange Thursday of last week, with 47 lots totaling 136,175 broilers selling in a range of 18.50 to 21.75, averaging 19.77 cents. One lot of 700 Leghorn fowl sold at 16½ cents. This shows a decline of three-quarters of a cent from the Tuesday sale.

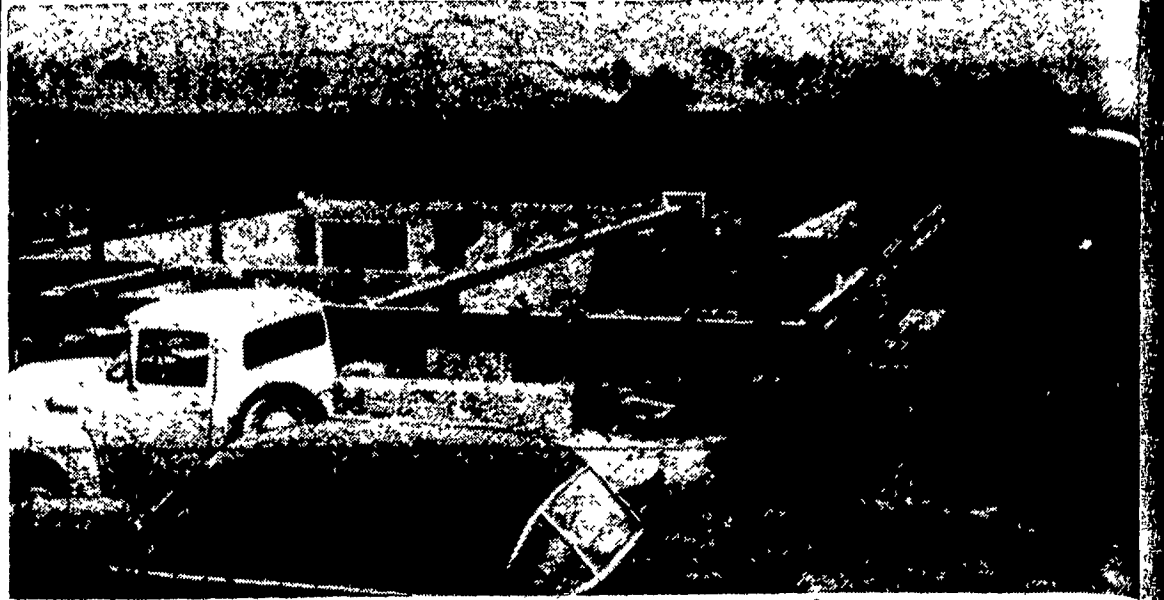
Listed Thursday were 51 lots, 142,800 birds, offered 50 lots, 137,800 birds, and sold, 48 lots, 136,875 birds.

Daniel K. Good, R1 Columbia, topped the market with 1,000 eleven-week Meatpackers that were purchased at 21.75 from Norman Moyer, R4 Manheim.

Last week, in sales Aug. 7 and 9, a total of 53 lots, or 157,725 birds were sold, compared to the corresponding week last year where 39 lots, 89,425 birds were sold. For the corresponding sale last year, Aug. 11, 1955, sale 77, listed and offered were 31 lots, 80,500 birds, sold were 30 lots, 77,500 birds, with broilers bringing 26.75 to 30, averaging 28.59. One lot of Leghorn fowl sold last year from 18 to 18.75.

Here are Thursday sales by lot number (each preceded by "9-"), seller with grower indicated in parentheses, amount and breed, age by weeks and days, buyer and price

1, Melvin Weaver, 475 White



Facing brick on the basement portion of the new Lancaster Poultry Center goes in place. Basement walls have been erected, but delays have been encountered in obtaining steel trusses to provide floor

support for the ground level. This is view looking east over the new building being constructed as much as possible volunteer labor. — (Lancaster Farming Staff Photo).

ALTMAN'S SUPER-A FEEDS

are timed-tested, scientifically balanced, vitamin complete and are manufactured daily in three modern plants. Compare our prices

Get your AROMA PEP at ALTMAN! You must see our started chicks to appreciate them! First Come—First Served!

Super A Dog Meal		Fine Chick	5.05
25 lbs.	2.05	Hog Feed	3.65
Rabbit Pellets 25 lbs	1.40	Hog Concentrate	5.15
B Starter Meg 100 lbs	4.40	16% Dairy	3.20
Grower	4.25	Oats 80 lbs	3.15
Broiler Ration	5.10	Corn	3.85
Bluebird All Mash	3.75	Turkey Starter	4.65
20% Quality Mash	4.05	Peat Moss	4.20
Scratch	4.05	Stazdry	2.20
Closed Labor Day		STEER & HOGS	\$3.20

SPECIAL CHOP FOR
WE DELIVER

ALTMAN'S CASH FEED STORE

WILLIS H. WEAVER MANAGER

947 Harrisburg Ave. Phone Lanc. 4-7715

10c per hundred discount on half ton lots or more.

PRICES SUBJECT TO CHANGE

Stretch Your Grain with Sugared Schumacher Feed

It's an

ALL-PURPOSE

Livestock Feed

for

**DAIRY & BEEF CATTLE
HOGS, SHEEP & HORSES**

YOU'LL LIKE YOUR FEEDING RESULTS when you feed Quaker Sugared Schumacher Feed to your livestock—either as the entire grain ration or in combination with other grains. You see, it's a blend of grain products plus molasses, added proteins and minerals—including important trace minerals. It's nutritious, palatable and digestible. And it's priced right... for economical feeding.



Contains:

- ✓ GRAIN PRODUCTS
from corn, oats
wheat, barley
- ✓ MOLASSES
- ✓ ADDED MINERALS
... including
trace minerals
- ✓ ADDED PROTEIN

See or call us today for Sugared Schumacher

J. C. Snavely & Sons, Inc.
Landisville, Pa.

George Rutt
Stevens R. D. 1, Pa.

Paul M. Ressler & Son
Paradise, Pa.

D. W. Hoover
East Earl, R. D. 1, Pa.

Millport Roller Mills
Lititz, R.D.4, Pa.

Grubb Supply
Elizabethtown, Pa.

J. C. Walker & Son
Gap, Pa.

Ross C. Ulrich
Peach Bottom, R.D. Pa.

We also have Ful-O-Pep Feeds for livestock and poultry

Brickwork at Poultry Center

Vantress, 10 wks, to Tilley's Poultry, 19½, 2, Miller & Bushong (Richard Grossman), 1500 White Vantress, 10 wks, to H. W. Longacre, 20; 3, Miller & Bushong (Evans Dague), 2400 White Vantress, 10 wks, to H. W. Longacre, 20½; 4, Miller & Bushong (Leonard Deitz), 4500 White Vantress, 9-3, to Mandata Poultry, 20; 5, Miller & Bushong (Mearl Long), 1100 White Vantress, 10 wks, to Meader's Poultry, 20½,

6, Miller & Bushong (Mearl Long), 1500 White Vantress, 10 wks, to Meader's Poultry, 20½; 7, Miller & Bushong (Mearl Long), 2900 Meatpackers, 10-3, to C. F. Manbeck, Inc., 20; 8, Miller & Bushong (Mearl Long), 3400 White Vantress, 10 wks, to Mandata Poultry, 20; 9, Miller & Bushong (John Bacon), 5000 White Mountains, 9-2, to Daniel K Good, 20, 10, Miller & Bushong (David Huyard, Jr.), 2500 Indian Rivers, 9-2, to Victor F. Weaver, Inc., 20,

11, Miller & Bushong (Frederick H. Sherrick), 3850 White Vantress, 10 wks, to H. W. Longacre, 20½, 12, O. Kenneth McCracken (Enos Eshbach), 5800 White Mountains, 9-2, to Mandata Poultry, 20, 13, Frank Gorman, 1400 Red Vantress, 10 wks, to Walter C. Mellinger, 20; 14, Eugene Schlosnagle, 8400 White Vantress, 9-2, to Pennsylvania Dutch Farms, 20, 15, Eugene Schlosnagle, 5600 White Vantress, 9-2, to Mandata Poultry, 20,

16, Eugene Schlosnagle, 2800 Red Vantress, 9-2, to Pennsylvania Dutch Farms, 20, 17, Norman Moyer, 1000 Meatpackers, 11-2, to Daniel K Good, 21½, 18, Clair Nissley, 2800 White Vantress, 9 wks, to College Hill Poultry, 20, 19, Titus Martin, 1050 Indian River Cross, 9-6, to Leola Poultry, 20; 20, Mervin Hess, 200 White Mountains, 9-6, to Walter C. Mellinger, 19½, 21, W. F. Ruoss, 400 Red Vantress, 10 wks, to Walter C. Mellinger, 20; 22, Emmanuel Flaud, 1000 White Mountains, 9-6, to Victor F. Weaver, Inc., 20, 23, Emanuel Flaud, 1600 Indian Rivers, 9-6, to Victor F. Weaver, Inc., 20, 24, Paul G. Hershey, 700 Leghorn fowl yearlings, to Carl B. Risser, 16½, 25, Elvin Nolt, 3500 White Vantress, 9-2, to Grimes & Hauer, 20,

26, Elvin Nolt, 3650 Red Vantress, 9-2, to Pennsylvania Dutch Farms, 20; 27, John Cochran, 2000 White Vantress, 9 wks, to Grimes & Hauer, 20, 28, John Cochran, 2000 White Vantress, 9 wks, to Grimes & Hauer, 20; 29, John Cochran, 2000 White Mountains, 9 wks, to Grimes & Hauer, 20, 30, John Cochran, 2000 Barred Cross cockerels, 9 wks, to Roy E. Ream, 19;

31, John Cochran, 2000 White Mountains, 9 wks, to Grimes & Hauer, 20, 32, Red Rose Experimental Farms-Wm. Eshelman, 3850 White Vantress, 10 wks, to Carl B. Risser, 20; 33, Red Rose

Experimental Farms-Wm. Eshelman, 3800 White Vantress, 10 wks, to Carl B. Risser, 20; 34, Red Rose Experimental Farms-Wm. Eshelman, 4000 White Vantress, 10 wks, to Walter C. Mellinger, 19, 35, Red Rose Experimental Farm-Wm. Eshelman, 4150 White Vantress, 10 wks, to Roy Ream, 19½,

36, Red Rose Experimental Farm-Wm. Eshelman, 4000 White Vantress, 10 wks, to H. W. Longacre, 19½; 37, Red Rose Experimental Farm-Wm. Eshelman, 4050 White Vantress, 10 wks, to H. W. Longacre, 19½; 38, Jere H. Cassel, 500 White Mountains, 9-6, to Carl B. Risser, 19½; 39, Paul Kreider, 225 White Vantress, 10-6, to Martin M. Bren-

dle, 20; 40, Clyde W. Martin, 1200 White Vantress, 9-5, sale, 19½ bid,

41, Richard Maule, 500 New Hampshire cockerels, 10 wks, Roy E. Ream, 18½; 42, Samuel Faus, Jr., 300 White Vantress, 10-2, to Walter B. Lehman, 20, 43, Roy R. Schultz, 700 New Hampshire fowls, 15-16 months, sale, 19 bid; 44, Lester Fritz, 900 White Vantress cockerets, 10-5, to Walter C. Mellinger, 21; 45, Arthur Graybill, 14,000 White Vantress, 9-2, Mandata Poultry, 20;

46, Indian River Poultry Farm (Reuben Beiler), 3000 Indian River pullets, 10-2, to H. W. Longacre, 20; 47, Red Poultry Farm (Elmer Dieffler,

(Continued to page three)

Serving Lancaster County Since 1841

IF YOU HAVE A FARM PROBLEM
CONSULT THE "COUNTY BANK"

Mr. Stanley M. Musselman,
Manager of our Farmer Relations
Department at your service.



The Lancaster County National Bank

23 E. King St — Cor Prince and James Sts. — 138 N. Queen St

Member Federal Deposit Insurance Corporation

MARKET-MAKER

That's the new Meatpacker Cross... Time and time again top place and top price bird at the Lancaster Poultry Exchange. Wider breast—heavier legs—bigger size—put the Meatpacker Cross on top! White feathering makes cleaning and dressing easier! Big meaty body keeps dressing weight loss down, gets premium price from poultry buyers!

COST-SAVER

That's the new Meatpacker Cross. A bird that practically grows while you watch. Goes well over three pounds in 10 weeks — uses less feed to get there too! Disease resistance makes the Meatpacker Cross hardy, cuts early chick loss!

LET THIS NEW BIRD
PROVE ITSELF IN YOUR FLOCK

Order Meatpacker Cross Chicks for 1956 delivery!
Call or Write.



Goldfus Hatcheries, Inc.

R. D. #3, Lititz, Pa. Phone 6-2407

Exclusive hatchery for

THE MEATPACKER CROSS