

## Grand Champion Jersey



Taking the purples in Jerseys at the recent Fifth Annual SPABC Cattle Show in Lancaster was King Lawn Maple Dafty, a Sept. 28, 1950 daughter of DJ7 Dairy-

like Sybil King, and out of the dam, King Maple Lawn Dewdrop. Her owner is Charles T. Wollaston, Toughkenamon, Pa.

## Grand Champion Guernsey



Penn Manor Farm, R3 Newark, Del., topped the Guernsey division of the recent SPABC Cattle Show in Lancaster with

their Sept. 25, 1949 Berkley Lady Glória, sired by DG29 Coldspring's Noble's Fashion. Her dam was Berkley Lady Gloria.

## Dairy Farms in State Decline; Milk Yield Up

HARRISBURG — A decline of 5,500 or 12.5 per cent in the number of dairy farms in Pennsylvania during the past five years has been offset largely by an increase of 39,000 or 5.5 per cent in the number of milk cows, enabling dairy farmers of the Commonwealth to maintain milk production at record levels.

Dr. William L. Henning, State Secretary of Agriculture, discussing the coming observance of June as Dairy Month, today said the cost-price squeeze in milk production has forced many small milk producers to give up their herds. The better producing cows have been absorbed by the larger dairy farms, he explained.

The 1950 census reported 43,800 dairy farms in Pennsylvania. The 1955 tally totaled 38,300 farms where the major source of income is from milk.

Improved breeding for higher-producing cows, better feeding and disposal of low-producing animals have been important factors in keeping milk output at high levels, he said. Also, average annual production of milk per cow has been increased 7 per cent in the 5-year period and last year stood at a record 6,770 pounds per milk cow. The average number of cows in milking herds now totals 940,000 or 39,000 more than in the spring of 1950 when 891,000 head was record high to that time.

Volume of milk production last year reached a record 6,364,000 pounds with a farm value of \$289,562,000, Department records show. The average price received by producers in 1955 was \$4.51 per hundred lbs. at wholesale compared with \$4.45 in 1950 when the total value of milk produced was \$250,580,000.

Lancaster Farming—11  
Friday, Aug. 17, 1956

## Farm Calendar

### OCTOBER

- Oct. 2 — Fountain display, chimes, Longwood Gardens, Kennet Square, 8 p.m.
- Oct. 2-5 — South Lebanon Community Fair, Iona
- Oct. 3-6 — New Holland Farmers Fair.
- Oct. 4-6 — Manheim Community Fair.
- Oct. 4-6 — Unionville Community Fair.
- Oct. 6-13 — Fourth International Dairy Show and World Championship Rodeo, Chicago.
- Oct. 8 — International Junior Dairy Show, Chicago
- Oct. 9-10 — Jersey, Guernsey, Brown Swiss judging, 4th International Dairy Show, Chicago.
- Oct. 10-13 — Mt. Joy Community Exhibit.
- Oct. 11-12 — Holstein, Ayrshire, Milking Shorthorn judging, 4th International Dairy Show, Chicago.
- Oct. 18-20 — Dillsburg Community Fair.
- Oct. 20-27 — American Royal, Kansas City, Mo., national Future Farmers of America convention.
- Oct. 20 — Methodist Men, Annual chicken barbecue, Quarryville Memorial Methodist Church, 5-8 p.m.
- Oct. 22 — Fountain display, chimes, Longwood Gardens, Kennet Square, 8 p.m.

### NOVEMBER

- Nov. 3 — County Convention, Lancaster County Farm Women's Societies.
- Nov. 3 — Feeder Calf Sale, Union Stock Yards, Lancaster.
- Nov. 10-16 — Eastern National Livestock Show, Timonium, Md.
- Nov. 23-Dec. 1 — International Livestock Exposition, Chicago.

### JANUARY, 1957

- Jan. 14-18 — Pennsylvania Farm Show, Harrisburg.

## Turkey Tests Underway as Proving Ground

The second annual test designed to advance Pennsylvania's standing as a high quality turkey producing state is now underway. Turkey eggs totaling 2,800 selected at random from the farms of 11 growers were hatched May 15 at the Pennsylvania State University. The poults are being raised under uniform growing and feeding conditions, measured and weighed at regular intervals.

The project is regarded as a proving ground for the breeding ability of various turkey strains produced by the growers.

Each of the 11 growers provided 200 turkey eggs as an entry, three breeders making two entries each. Fifty male and 50 female poults from each entry will be raised on the turkey farm of Donald McAlvaine, Whitford, Chester County. Representatives of the Bureau of Markets will make weight and body measurements at intervals up to 28 weeks. The birds then will be killed, dressed, weighed, measured and sold.

The special test is conducted by the Department with the cooperation of the State Poultry

Federation and the poultry department at Penn State University. Entry fees by growers cover all expenses.

Success of the 1955 test was such that nine out-of-state breeders sought entry to the new test. Due to limitations, six of these had to be refused.

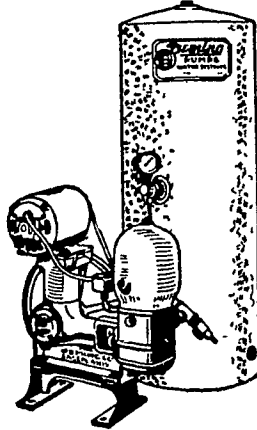
MAR-GRO Vit-min Supplement Your cattle and hogs need  
**DUTCH BEL** for Dairy  
**BETTER BEEF** for steers and  
**TRI LE RICH** for Hogs  
We also have the famous **DAN PATCH HORSE POWDER**  
Manufactured by Mar-Gro Mfg. Co., Lancaster  
**AARON S. MARTIN**  
DISTRIBUTOR  
#1 EAST EARL

## Belmont

97 Per Cent Pure  
Agricultural Limestone  
Calcium Oxide . . . . 30%  
Magnesium Oxide . . 20%  
Calcium Equivalent 57%

**Wenger & Sensenig Co.**

Phone Gap HI 2-4500  
RD 1, Paradise, Pa.



## PUMPS

FOR EVERY  
FARM HOME

AND  
INDUSTRIAL NEED

## HERR THE PUMP MAN

211 N. Ann St. Lancaster, Pa. Ph. 3-3694

## APPLICATION BLANK

## American Mechanics Building and Loan Association

"Lancaster's Oldest"

Organized 1868

Meets Fourth Monday of Each Month

58 N. Duke St., Lancaster Pa.

New Series Opens Monday, July 23, 1956. Shares \$1.00 per month.

I hereby subscribe for \_\_\_\_\_ shares. **4%** currently paid on installment shares

GIVE FULL NAME INDICATE MISS OR MRS

ADDRESS

MAIL OR PRESENT APPLICATION TO OFFICE, OR CONTACT ANY ONE OF THE FOLLOWING DIRECTORS.

Bruce A. Boggs  
John D. Brenner  
H. Clay Burkholder, Esq.  
H. F. Duffenderffer  
H. Stanley Harner

S. Richard Harr, Esq.  
Lester H. Herr  
E. Melvin Hubley  
E. L. Matterer  
Harold E. Smith

O. J. Smith, Jr.  
Robert A. Smith  
Earl V. Stauffer  
Albert F. Witmer

Arthur W. Siegler, Treas.

Joseph R. Byars, Solicitor