

Lancaster County Ranks Among Top Ten in Total Cattle, Calf Sales

Despite the fact it is pitted against the cattle-producing counties of the California range, the Arizona flatlands, and Colorado mesas, Lancaster County in 1954 placed ninth in the total number of cattle and calves sold, with total value of \$18,843,548.

Even the Sand Hills of Nebraska couldn't equal the rank of the Garden Spot, for the 120,584 head sold here stood well above Cherry County, Neb., in 11th place with 115,016. The Sand Hills are noted for supplying feeder cattle to Corn Belt lots for fattening.

Weld County, Colo. First Standing first was Weld County, Colo. was 297,829 — 0.6 per cent of the U.S. total of 44,350,808, valued at \$47,996,987. Maricopa County, Ariz. was second with 213,159 worth \$33,648,263. Los Angeles County, Calif., was third with 210,178 and seventh in value with \$21,528,976, and famed Imperial County, Calif., fourth in number and third in value with 182,626 bringing \$28,621,134.

Among the top 100 counties in number of cattle and calves sold alive in 1954, twenty were in Iowa, 14 in California, 13 in Nebraska, 12 in Illinois. Others standing above Lancaster County were 1, Weld County, Colo.; 2, Maricopa county, Ariz.; 3, Los Angeles County, Calif.; 4, Imperial County, Calif.; 5, Kern County, Calif.; 6, Pottawattomie county, Iowa; 7, Tulare County, Calif.; 8, San Joaquin County, Calif.

New York County 39th

St. Lawrence County, New York, standing in 39th place.

was the only other eastern states county listed among the first 100 in numbers sold.

Lancaster County ranked 11th in value of sales in 1954. The total U.S. value was \$4,283,451,830.

Again among the top counties in cattle and calves on farms, Lancaster County ranked 18th in number with 146,848 against a national total of 95,027,041. Cherry County, Neb. was first with 285,296, Weld County, Colo., second with 283,836, and Maricopa County, Ariz., third with 236,961.

West Lampeter Plans Horse Show, Broiler Barbecue on Saturday

To raise additional funds for operating the 1956 Community Fair, the West Lampeter Community Fair, Inc., will sponsor a horse show and broiler barbecue at the Lampeter Community Grounds Saturday, Aug. 11.

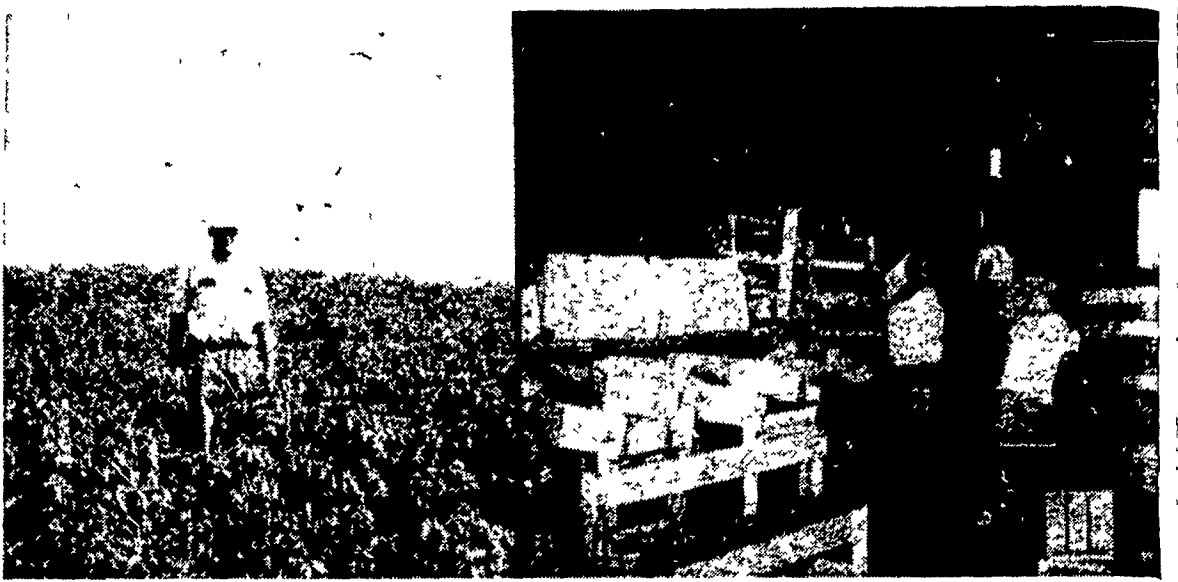
Chairman of the horse show committee is Robert E. Good of Willow Street, and heading the broiler barbecue is Roy B. Herr of R7 Lancaster. First event will open at 10 a.m. DST Saturday.

Twenty-eight classes are listed in the horse show, with morning sessions from 10 a.m. to 12:30 p.m., afternoon sessions from 1:30 p.m. to 8:00 p.m.

The West Lampeter Community Fair is scheduled Sept. 26, 27 and 28 with a gymkhana Friday, Sept. 28.

Modern science can shed much light on times and conditions and even philosophies of biblical times — and must be taken into account by theologians.

Growing—and Packing

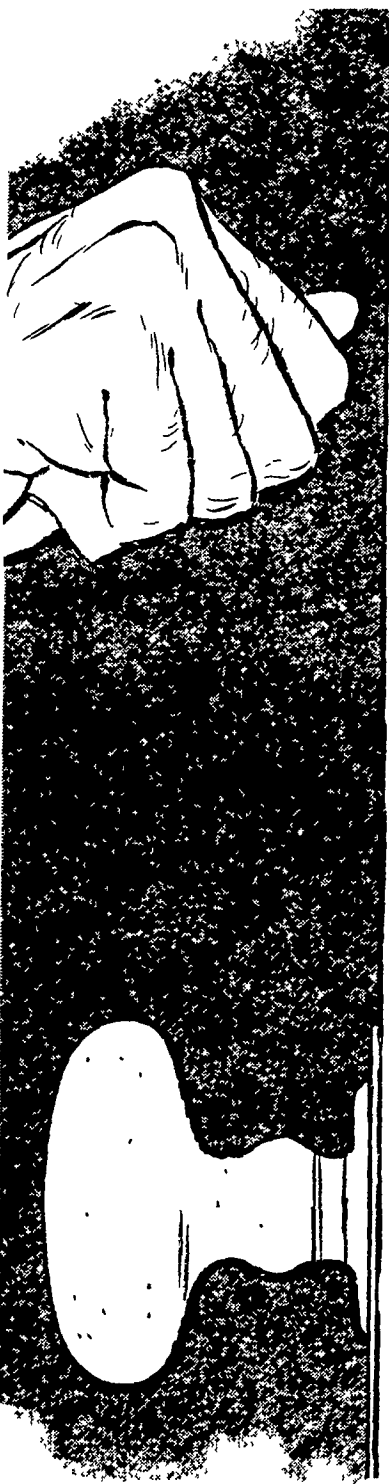


Charles A. Ressler, R2 Holtwood, stands in a tomato patch adjacent to the packing plant on his farm. Stalks average three feet in height. He has 100 acres in toma-

atoes under cultivation this year. At the right is a photo showing packing operations at the plant of Chris Atkinson & Son. (Lancaster Farming Staff Photos)

FOOD PRESERVATION

Industrial scientists are busy looking at the atom and miracle drugs in their search for ways to prolong the edible life of food. While housewives are intently interested in the subject, research is proceeding particularly with the armed forces in mind, since food storage and transportation is one of the Army's greatest problems.



OPPORTUNITY KNOCKING

Every year many more poultrymen discover Beacon feed does something extra.

Experienced nutritionists point out that even an ordinary feed will satisfy birds as they come into their first flush of production. But temporary satisfaction is expensive in the end.

The profit formula for long-season sustained production is based on a feed so well balanced . . . and so highly concentrated in nutritional values . . . that it can maintain body weight and peak production over many months.

Beacon is so formulated . . . to justify itself on a profit over feed cost basis . . . not to meet a certain price per bag.

That's why TOP poultrymen who have made comparisons say, "Birds lay more and longer on Beacon . . . feeding cost per dozen is lower."

OPPORTUNITY KNOCKS. You must open the door. Beacon Feeds and the Beacon Program can boost your poultry profits.

CALL YOUR BEACON DEALER

J. M. Bomberger
ELM

Farmers Supply Co.
137-39 E. KING ST., LANCASTER

Paul H. Gehman
DENVER

Fred L. & John E. Homsher
STRASBURG AND QUARRYVILLE

Wenger's Feed Mill, Inc.
RHEEMS

O. Kenneth McCracken
MANHEIM

Milport Roller Mills
LITITZ

Earl Sauder
NEW HOLLAND

Osceola Flour Mills
GORDONVILLE

Angus Trophy for International



Miss Jo Ann Williams, a secretary in the offices of the American Angus Association, St. Joseph, Mo., examines the Stephen Birch Perpetual Challenge Trophy which is available for presentation to the exhibitor of the Grand Champion Steer at the International Livestock Exposition in Chicago for the first time this year. The cup will be awarded if the steer is an Aberdeen-Angus, and if the breeder and owner are the same. The winner will keep the trophy for a one-year period, and will be given the small replica of it, which Miss Williams holds. However, if won three times by the same person, the large trophy becomes the winner's permanent property. It has been donated by Stephen Birch, Jr., of Mahrapo Farms, Mahwah, N. J., in memory of his father. Mr. Birch, Jr. will also donate a cash prize of \$250 to the breeder and owner of the steer, which is in addition to the \$250 to be donated by the American Angus Association.

BEACON