

## Farm Groups to Be Queried on New Civic Center

Lancaster County farm organizations will receive a questionnaire within the week on which they can give their expression of individual needs to be incorporated in the proposed Civic Center at Lancaster.

In a Wednesday afternoon meeting, committee chairmen were named, with Laverne Powell of Kirkwood presiding. Representing the banks will be Stanley Musselman, County Agricultural Agent Max M. Smith, Levi Brubaker, representing the poultry interests, Gerald Brenner for the Future Farmers of America, and Mrs. Robert Nolt, president of the Lancaster County Farm Women's associations.

When questionnaires are tabulated, results will be presented to the Civic Center committee in September.

A lively discussion was reported, and nearly 20 organizations were represented.

### PICNIC FAVORITE

On your next picnic, take along some carrot and celery strips in a plastic bag surrounded by ice cubes. It's surprising how the family goes for this finger food, reports Marguerite L. Duvall, Penn State extension family life specialist.

### Avi-Tab

gives new life



For birds of any age, Avi-Tab gives new pep and vigor. Appetizing ingredients increase feed consumption, aid digestion. Trace minerals help build up run-down birds. Avi-Tab speeds convalescence after disease. Give Avi-Tab to chicks, growing birds, or layers on a monthly basis. It's easy to use—sprinkle over mash, work in lightly. Ten-day treatment costs 1¢ or less per bird. Ask for Dr. Salsbury's Avi-Tab now.

When you need poultry medicine...ask for

Dr. SALS'BURY'S

F. W. FISHER

Rep.—Ph. Leola 6-2482

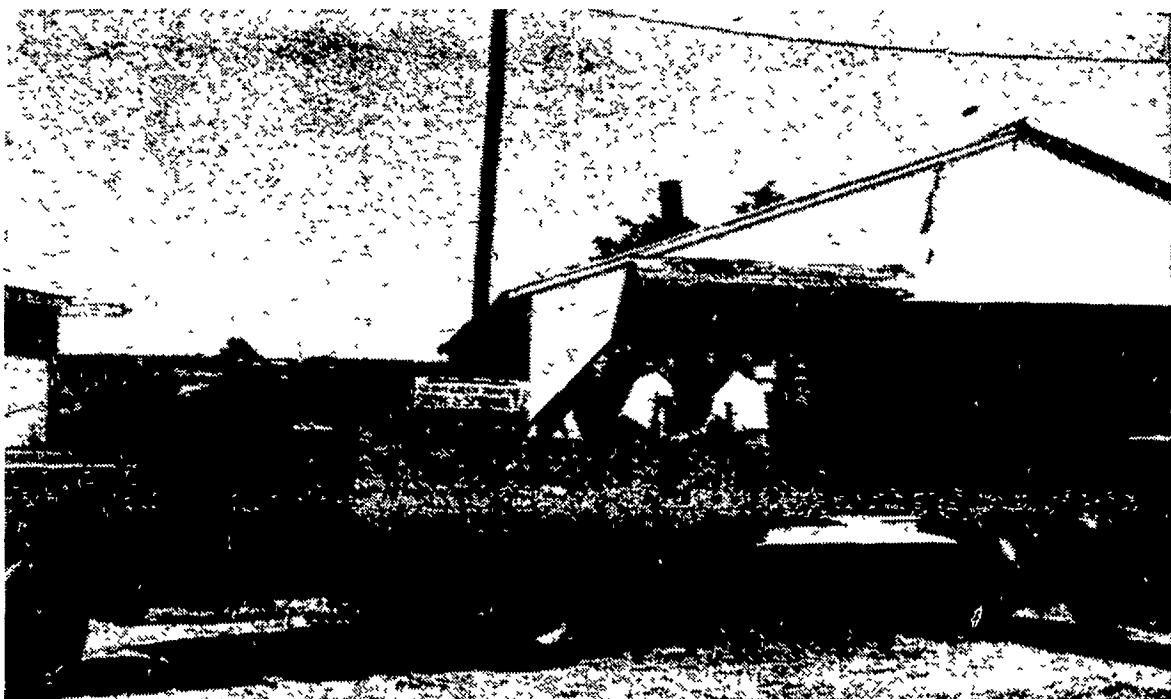
LEACOCK, PA.

## Washing, Waxing, Grading



Laundered, waxed and graded — the first two processes machine-done — tomatoes pass through machinery at a Lancaster County tomato receiving station. Workers hand-grade tomatoes as they pass by, and at the left baskets are full, awaiting transport to southern markets. (Lancaster Farming Staff Photo).

### "We Buy Green Tomatoes"



Traffic is heavy around a green tomato buying station, and trucks may stand in line to move the perishable crop as quickly as possible. Here is the receiving dock on the Park Eshelman farm near Rawlinsville. (Lancaster Farming Staff Photo).

### Colorized Jamboree Held At Lititz

Eby's Mill, Lititz, recently held their Colorized Jamboree at Lititz Spring Park. The affair was attended by over 450 people, and the program included Dr. J. R. Wiley of Whitmoyer Laboratories, musical entertainment, and colorized slides of local poultry operations. Prize winners announced included Willis Geib, Paul Balmer, David Merky, Jacob Geib, Keystone Poultry Breeders, Amos Funk, Daniel Haldeman, Haldeman Poultry Farm, Joanne Shenk, Levi Rohrer, Harold Eby, and Harold Sander Ave.

### More Tenderness In Lower Grades Of Beef Sought

RENO, Nevada — A University of Chicago biochemist said the meat industry is seeking new ways to improve the tenderness of lower grades of beef as a means of reducing production costs.

Dr. B. S. Schweigert, assistant director of research and education of the American Meat Institution Foundation at Chicago, spoke on the University of Nevada campus. He addressed the Western Division of the American Society of Animal Production and the American Dairy Science Association on "New Frontiers in Meat Research."

He said the Foundation, whose research by 55 scientists is supported by domestic and overseas meat packing companies, has an active beef tenderization program under way. It includes studies on tenderizer preparations and seeks to avoid the need for costly, wasteful procedure of heavy feeding of concentrates to beef cattle.

Studies also are being made, he added, which are aimed at finding better ways to preserve meats, either through irradiation or the use of antibiotics. He said results with irradiation thus far have been more favorable with pork than with beef.

Every minority has a tendency to blame the majority for its own mistakes

### For Fall Seeding . . .

- ★ Alfalfa
- ★ Clover
- ★ Timothy
- ★ Canadian Green-Lands Pasture
- ★ Fertilizer
- ★ Lime
- ★ Limestone

Spreader Service Available For Lime and Fertilizer

WEST WILLOW FARMERS ASSOCIATION

WEST WILLOW

Ph. Lanc. 4-5019

## Wolgemuth Bros., Inc.



FOR

POULTRY & LIVESTOCK

Florin, Pennsylvania

Phones: Mount Joy 3-9551 & 3-8311

## Christmas Trees Will Compete in 1957 Farm Show

HARRISBURG, — Christmas trees are to be displayed in competition for the first time at the 1957 Pennsylvania Farm Show here Jan. 14-18. The Farm Show Commission announced today.

Arrangements have been completed by the commission and representatives of the Pennsylvania Christmas Tree Growers Association whereby six varieties of trees will be judged at the Farm Show.

Premiums totaling \$246 will be awarded by the commission. Five prizes will be offered in each of the six classes, the premiums being \$12 for first place, \$10, \$8, \$6 and \$5 for the remaining four places, according to Dr. William L. Henning, chairman of the Farm Show Commission.

A state champion Christmas tree will be selected by the judges. It will be displayed on a rotating platform in the west lobby of the Farm Show building, suitably decorated.

"Production of Christmas trees is one of the fastest growing farm industries in Pennsylvania," Secretary Henning declared. "We lead all other states in production of nursery-grown, symmetrical trees that are in such great demand. It is only proper that the growers be given opportunity to display their products and show the public the characteristics of high class, quality Christmas trees. The display will have great educational value."

ride the flashing new

**Cushman**

**EAGLE**

New Beauty-New Riding Comfort—

- Powered by Cushman Husky 4-cycle engine
- Up to 75 miles per gallon... 1/2¢ per mile operating cost

Shank's Garage  
216 NEVIN STREET  
LANCASTER

### Authorized Dealers

- \* Master Mix
- \* Ferguson Equipment
- \* Lincoln Welders
- \* Thermopane
- \* Universal Milkers
- \* Miller's Insecticides
- \* Koppers Creosoted Posts
- \* Wirthmore Feeds
- \* Haverly Bulk Tanks
- \* Sauder Loaders
- \* Anhydrous Ammonia
- \* Wheel A-Way Egg Washers
- \* Irrigation Equipment
- \* DeKalb Chix & Started Pullets

HIESTAND Inc. Marietta 6-9301