

**Intercourse Plans
Summer Jubilee**

Plans for the Intercourse Summer Jubilee Aug 18 and 19 are well underway, with a horse show for the opening afternoon. A chicken barbecue will start at 4 p.m. That evening, a concert will be given by the Pequea Valley High School Band. Sunday at 7 p.m. there will be a community hymn sing on the Intercourse Elementary School grounds.

**Dutch Dishes
Featured at
"Dutch Days"**

Hershey, Pa.—All of the traditional Pennsylvania Dutch dishes, often imitated, rarely duplicated, will be available to visitors attending the eighth annual Pennsylvania Dutch Days celebration at Hershey Park, Aug. 23 through 26.

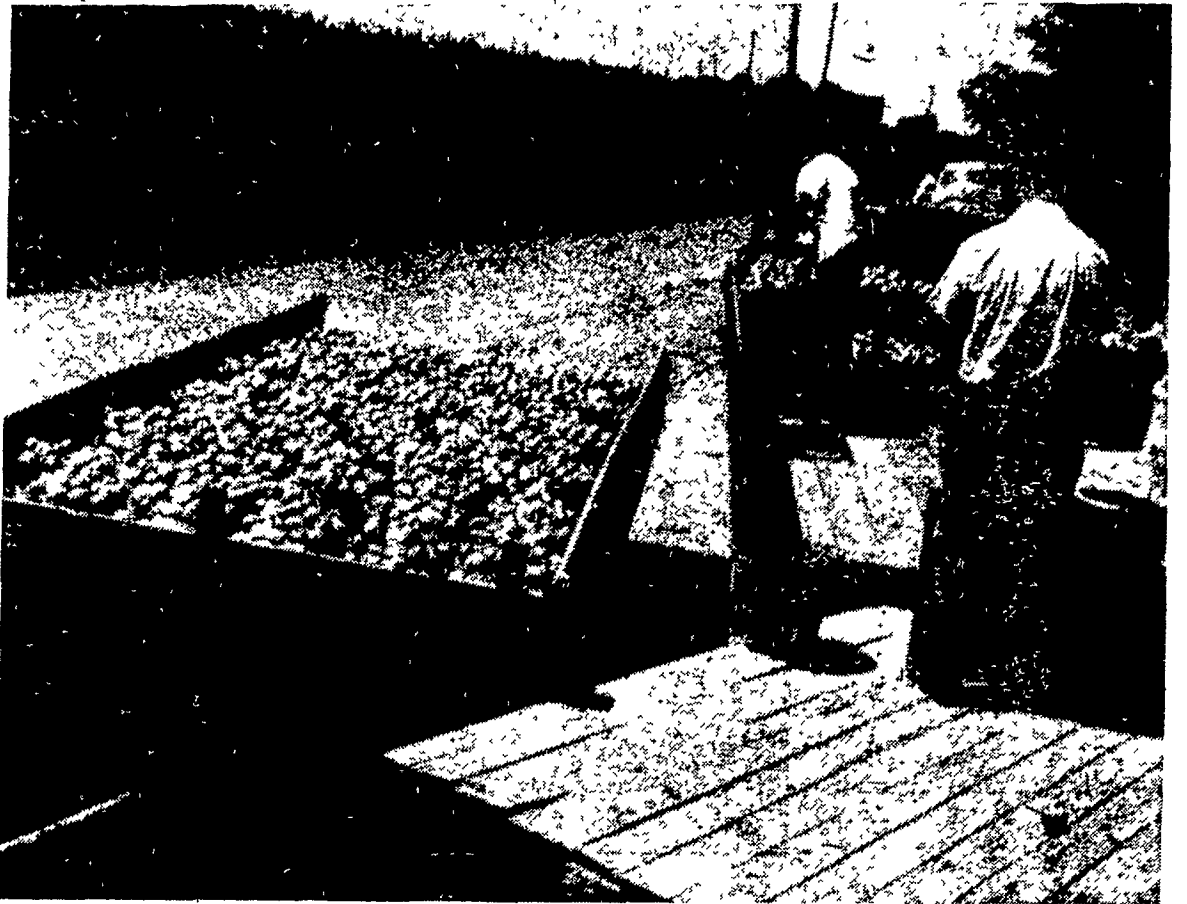
Guests will find delight in such epicurean favorites as schnitz and knepp, pot pie, and, of course, good old-fashioned roast beef and gravy. In addition, there will be the popular seven sweets and sours, home made bread, smearcase, apple butter and, for desert, shoo-fly and snitz pie.

Ladies of Derry Presbyterian Church and the Ladies Auxiliary of the Hershey Volunteer Fire Company will serve full course menus, while the Hanoverdale Church of the Brethren will dispense chicken corn soup and shoo-fly and snitz pie in the park itself.

Baked chicken pot pie will be offered by Derry Church on Thursday and Saturday, with the fire company group featuring the same menu on Friday. Schnitz and knepp will be the menu topper at Derry Church on Friday, and roast beef and gravy is scheduled as the featured dish by the fire company auxiliary on Thursday.

Barbecued chicken will be served upwards of 10,000 persons at the park athletic field on Saturday, beginning at 11:00 a.m. by the Pennsylvania Poultry Federation. The food will be cooked over outdoor pits and served in cafeteria fashion.

One Unloading, One Waiting



When tomatoes start pouring into receiving stations and packing plants, there's not a moment to be lost. While a truck (right) is nearly unloaded, a tractor-drawn

wagon (left) awaits at a Lancaster County packing plant. (Lancaster Farming Staff Photo)

BELMONT
97 Per Cent Pure
Agricultural
Limestone
Soil Testing Service
CALL
DAVID B. JOHNS
Overland 7-3301
**WENGER &
SENENIG CO.**
R. D. 1, Paradise, Pa.
Phone Gap HI 2-4500

**County Seeks
\$840,431 For
"Red Feather"**

The 22 Red Feather Services of the Community Chest and the Red Cross need \$840,431 next year to continue serving a growing Lancaster County population, the United Community Campaign Joint Policy Committee announced today. This amount will constitute the goal of the United Community Campaign to be held in Lancaster County from October 1st through 26th and in the city from October 8th through 26th.

The \$840,431 is an increase of \$68,202 over the \$772,229 goal of the 1955 United Community Campaign.

Increased Demands

The Joint Policy Committee stated that the Boards of the Community Chest and the Red Cross based their anticipated needs on the increased demand for services due to the population growth in Lancaster County and on the current rise in prices. Lancaster County population increased from 234,717 in the 1950 census to an official estimate of 248,296 as of April 1, 1954. If this rate continues, a population of over 280,000 is expected by the 1960 census. The net population gain in 1955 — based on births over deaths — was the highest in the county's history and higher than the state in general or neighboring counties.

The Community Chest and the Red Cross will also find it more expensive to serve this growing number of persons, the Committee declared. Food, clothing, utilities, rent and insurance costs are higher, and social agencies can hardly hold the line in meeting demands and increased costs. The cost-of-living index has been steadily rising each year, in April the consumer price index in the United States reached 114.9 per cent of the 1947-1949 average.

We Have The Resources

Martin C. Dellinger, Campaign Chairman, stated today that a look at Lancaster County shows that we have the resources to reach the goal. He cited the fact that average hourly earnings for industrial employes in Lancaster County have increased from \$1.18 in June of 1949 to \$1.69 in May, 1956. The Lancaster general business index made a gain of 12 per cent from May 1955 to May 1956. He pointed out that of the 183 standard

**Two Changes Made
By Eshelman Feeds**

Linwood P. Beltz has joined the firm of John W. Eshelman Sons as assistant comptroller.



R. A. REED - L. P. BELTZ

A native of Philadelphia, he is a graduate of Temple University. He is married and father of three children. Comptroller for John W. Eshelman & Sons is R. C. Heagey, who has been with the firm since March 1, 1911.

Meanwhile, Marshall M. Ford has retired as head of the jobbing division, and Richard A. Reed has been appointed as his successor. Mr. Ford served with Eshelman's since July 1, 1917. Mr. Reed, a native of Missouri, was owner and manager of R. A. Reed Co., Corning, Ark., before coming to Lancaster County.

The world is a great place; stand on any street corner and watch the couples go by.

metropolitan areas in the United States, Lancaster County ranks 85th in population, but 12th in the United States and first in Pennsylvania in the consumer spendable income per household.

"The amount of the goal was arrived at after months of analysis and conferences", Dellinger stressed.

Problems Alone Grow Worse

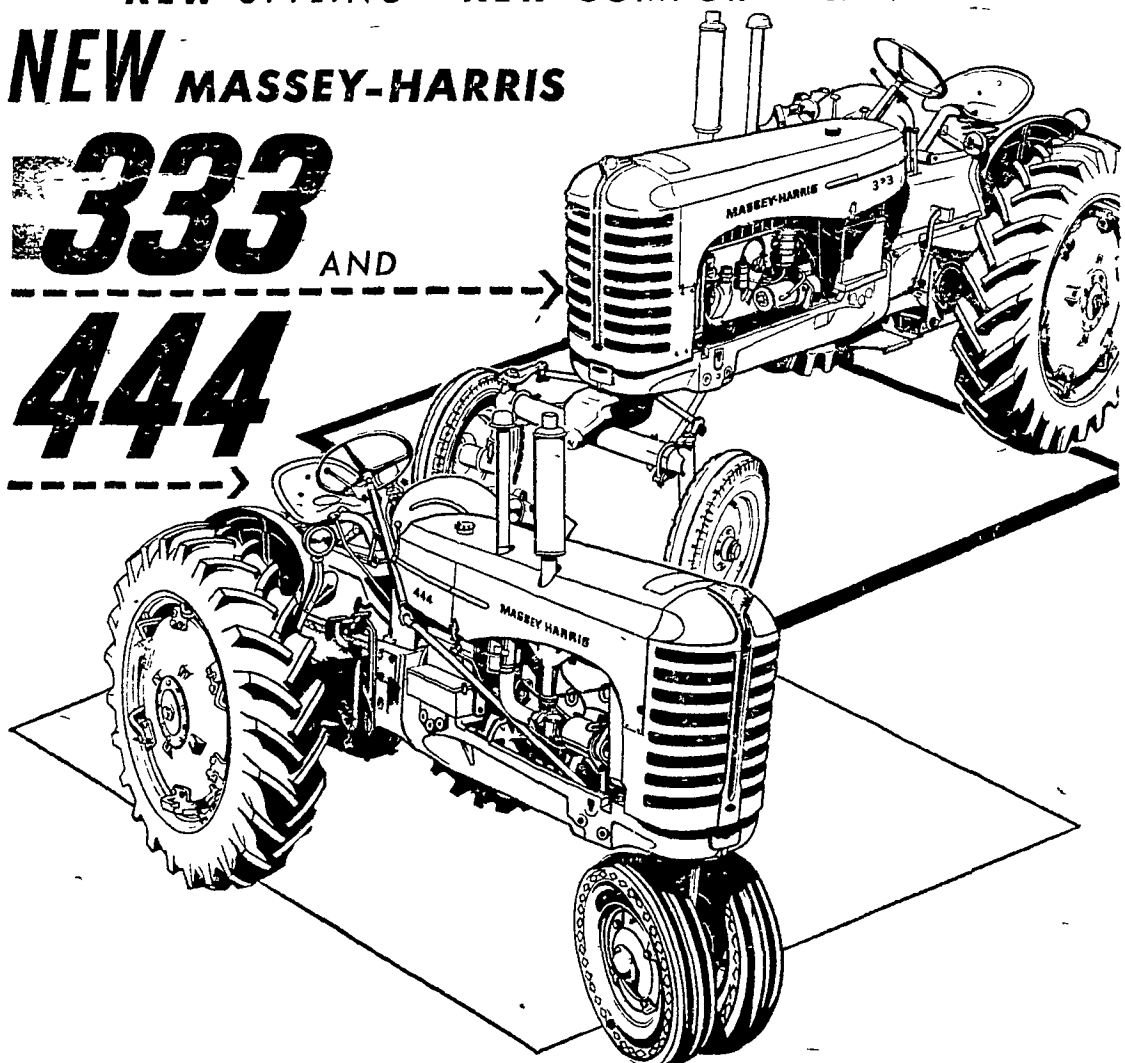
He explained that the Community Chest and the Red Cross drew up their own budgets. Each of the 22 Red Feather Services of the Community Chest had to justify its budget to three separate community groups first, to its own Board of Directors, then, to the Chest Budget Committee, and finally, to the Chest Board of Directors. The original requests of the Red Feather Services amounted to \$742,667. This was adjusted during the budget conferences to 656,973.

One thing Democratic delegates to Chicago this month can count on it hot weather.

NEW STYLING NEW COMFORT NEW CONTROL

NEW MASSEY-HARRIS

333 AND
444



Here's a pair with power . . . new 3 plow 333 with the all new 208 cu. in. engine . . . and the new 4 plow 444 with the historic 277 cu. in. engine. Dynamic new performance . . . new features, comfort, control . . . more power, speed, traction.

Two great Massey-Harris tractors packed with outstanding features—from the feel of the wheel to the close-cultivating vision of modern styling.

Here's a partial line-up of the new, miracle designed 333 and 444 advantages:

- NEW 10-speed Hi-Lo transmission**
- NEW power steering**
- NEW 12-volt electrical system**
- NEW power-adjusted rear wheels**
- NEW Level-Drive PTO**
- NEW hour-speed-1pm meter**

Call us for a demonstration . . . get the complete power and economy story as only Massey-Harris tractors can tell it.

**...MIRACLE ENGINEERED
TO MAKE YOU
FORGET
THE PAST!**

M. M. Weaver & Sons

BAREVILLE, R. D. 1

Ph. Leola 6-3321

R. M. Brubaker, Inc.

SALUNGA

Ph. Landisville 4016

Always
KEEP YOUR
EYE ON
MASSEY-HARRIS