

**Broilers Tuesday**  
**Aug. 21.2,**  
**1.5 Avg. 28.50**

Lancaster Poultry Exchange (Lancaster, Pa.) (Sales Report) Sale 167, Tuesday, July 31, 1956—Averaging 21.21, thirteen lots totaling 55,600 broilers sold at the Lancaster Poultry Exchange Tuesday this week in a range of 21 to 22 1/4. One lot 500 broilers, sold at 16 1/4. List—16 lots, 60,800 birds—

at the corresponding sale at Lancaster, Pa., Aug. 2, 1955, sale 74, 11 lots and offered were nine lots, 50 birds, sold were eight lots, 20,000 birds in a range of 28 to 30 averaging 28 1/2.

July sales at the Lancaster Poultry Exchange total 266,575 birds, more than in July, 1955, but prices were considerably lower, averaging from 21 to 23.98 in July 1956 averages just 27.94 to 29.65 cents July a year ago.

Topping Tuesday's market was a lot of 1200 White Vantress, 7 weeks, one day, consigned by Clayton H. Shenk, R6 Lancaster, Pa., sold to John N. Thomas, R6 Lancaster, at 22 1/4.

Listed for Thursday were 185, 000 birds, adding up a new year's record in receipts for the Lancaster Exchange.

There are Tuesday sales by lot numbers (each preceded by 31-) seller, with grower indicated in parentheses, amount and bred, by age by weeks and days, buyer, and price.

Eli B. Stoltzfus, 200 Leghorn fowl yearlings, withdrawn prior to sale; 2, Clayton H. Shenk, 1200 White Vantress, 10 wks, to John N. Thomas, 22 1/4; 3, Edna Horst, 1500 White Vantress, 9-6, to Tilley's Poultry, 21; Wenger's Mill, (Joseph Deitz), 1500 White Vantress, 9 wks, withdrawn prior to sale, 5, Clair Mey, 500 Leghorn fowl yearlings, to Walter B. Lehman, 16 1/4; David S. Hoover, 1900 Indian cross, 10 wks, to Walter C. Singer & Son, 21; 7 Red Rose Experimental Farm-William Eshelman, 3850 Indian Rivers, 9-5, to Victor J. Koser, 21 1/4; 8, Red

**Magazine Editors Find Magic Under the Rafters**

"Many older homes waste thousands of cubic feet of space in the attic while rooms on lower floors are straining at the seams... That unused space can easily be transformed into one or more very useful rooms—largely by yourself, too."

So said HOME MODERNIZING magazine's editors in their first edition. Now, they feel they have proved the point—with an attic modernizing project that created two bedrooms, a playroom, and a compartmented bathroom in a mere 25x23 feet of floor space.

The roof was literally raised on one side, permitting inclusion of a dramatic window wall in the boy's bedroom.

Wooden folding doors increase efficiency, close off the tiny bedrooms when they are in use. With doors open, bedrooms are in effect part of the play space for the boy and girl sharing the attic. Folding doors also divide three bathroom compartments.

Plywood built-ins make the best possible use of space. Most notable is the built-in bunk arrangement used to divide the bedrooms. The lower bunk is on the girl's side, with a bulletin board above. On the other side of the bulletin board is the boy's bunk. An electric-train table pulls out from underneath the girl's bunk into the boy's room. A movable storage unit at the end of the bunks is shared. Under-the-eaves cabinets and closets store clothing, playthings and other equipment.

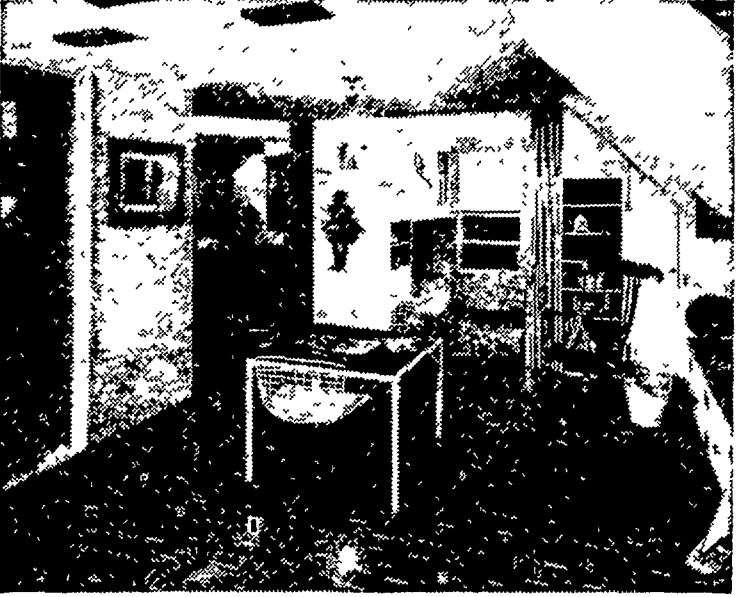
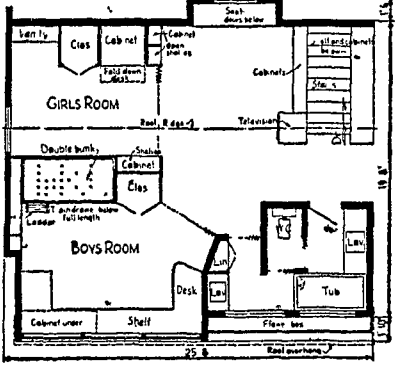


Photo shows general view of HOME MODERNIZING editors' attic from far end of playroom. Wooden folding doors close off the sleeping cubicles when they are in use. With doors open, bedrooms become part of play area. Attic walls are finished in plywood, with panels of different textures used for accent. Wallpaper is also used for decoration. In floor-plan drawing, note how folding doors are placed to compartment attic proper and multi-use bathroom to secure privacy.



**Clearance Sale Of Used**

**Combines & Balers**

- John Deere 12 A w Engine
- Mc-Deering 52 w Engine
- Case 12A w Engine
- A-C Roto Baler P. T.O.
- Case Wire Baler w Engine

Priced For Quick Sale!

**Snavelly's Farm Service**  
 NEW HOLLAND  
 Phone 4-2214

Rose Experimental Farm-William Eshelman, 3850 Indian Rivers, 9-5, to C. F. Manbeck, Inc., 21 1/4; 9, Red Rose Experimental Farm-William Eshelman, 1350 Indian Rivers, 9-5, to Walter C. Mellinger, 21; 10, Red Rose Experimental Farm-William Eshelman, 3950 Indian Rivers,

9-5, to Daniel K. Good, 21; 11, Paul Rowe, 5500 Red Vantress, 9 wks, to C. F. Manbeck, Inc., 21 1/4; 12, Paul Rowe, 4000 White Vantress, 9 wks, to Victor F. Weaver, Inc., 21 1/4; 13, Funk Bros., 7500 White Vantress, 10 wks, to Victor F. Weaver, Inc., 21 1/4; 14, Funk Bros., 7500 White Vantress, 10 wks, to Pennsylvania Dutch Farms, 21 1/4; 15, Funk Bros., 7500 White Vantress, 10 wks, to College Hill Poultry, 21 1/4; 16, Funk Bros., 6000 White Vantress, 9-4, to Victor F. Weaver, Inc., 21 cents.

**SPECIAL BABY CHICK BARGAINS**  
 White Cornish Cross Broiler Chicks Available For Immediate Or Future Delivery  
 \$12.00 per 100  
 Heavy Seconds . . . 4c  
 Phone or write today  
**REICH POULTRY FARM**  
 Rt Marietta Ph. 6-7123

**8 Million Acres Signed for Soil Bank Reserves**

WASHINGTON — (USDA) — More than eight million acres of cropland had been signed up by farmers under the 1956 Acreage Reserve program of the Soil Bank through July 20, according to reports for that date which have been received by the U. S. Department of Agriculture from State Agricultural Stabilization and Conservation offices.

The amount of cropland listed for the Acreage Reserve during the third week for which reports have been available almost doubled the previous week's figure. During the week ended July 6, slightly under two million acres had entered the Soil Bank Acreage Reserve. Last week's total, which covered the period through July 13, was 4,400,000 acres. Deadline for producers to enter land in the 1956 Acreage Reserve was July 27.

According to the July 20 report from the State ASC offices, 368,296 Acreage Reserve agreements were signed. If the signatory producers comply with requirements of the program, they can earn nearly \$165 million on the eight million acres entered under the program.

**attention poultrymen!**

Guard flock health . . . immunize against virus diseases

Prevent mortality and loss of egg production. Purchase vaccines made by the American Scientific Laboratories, Inc. of Madison, Wisconsin, from . . .

**Eastern States Farmers' Exchange**  
 or call your local representative  
 Tel. 178 Quarryville . . . Tel. 43755 Lancaster

**Eggs**

Philadelphia, Aug 1—Market weak. Prices declined on most grades. Increased supplies were more than sufficient for the relatively lighter demand. Current receipts in slow sale in small-lots mostly at -37-38 cents with most arrivals showing quality defects due to heat.

Wholesale selling prices: minimum 10 pct AA quality. Large 45-48 lb white 46 1/2-47, brown 46-46 1/2, medium white 40-40 1/2, brown 39 1/2-40 Extras, minimum 60 pct A quality. Large 45-50 lb white 43-44 1/2, mixed color 42 1/2-43, medium white 38-39, mixed 37-38. Standard 39-40, Checks 30-31.

Receipts July 31—4,500 cases all by truck

**Processed Poultry**  
 Philadelphia Aug. 1—Processed poultry. Ready-to-cook: Young chickens - about steady. Supplies were fully adequate to meet the fair demand. Selling competition was active from distant producing areas and buyers had wide selection.

Prices paid for ice packed poultry delivered warehouse Philadelphia (cent per lb.): Grade A and U S. grade A hens 36 cents, young chickens 1 1/2-1 3/4 lb 33-34 cents, 2-3 lb 33 1/2-35. Caponettes 4 1/2 and over 42 cents.

Hens frozen (ready to cook) wholesale selling prices 3-4 lb 41 cents, 4-4 1/2 lbs 42, 4 1/2-5 lbs 43 cents

Ducklings frozen ready to cook wholesale selling prices 42-44 cents

Receipts July 31 included other than turkeys Maryland 103,000 lbs, Delaware 92,000 lbs, North Carolina 21,000 lbs, Virginia 22,000 lbs.

**Live Poultry**

By USDA

Philadelphia, Aug 1—Market unsettled. Demand fair and very selective as to size and quality. Supplies of most classes were more than adequate. Large white rock and cross pullets 28-29 cents. Large white rock caponettes 25-28 cents few lots fancy quality. Higher crosses in slow sale at 25 cents, ordinary quality 20-22 cents. Few lots roasters sold slowly at 18-22 cents. Cross fryers in slow sale at 20-23 cents white rocks 20-23 cents, vantage reds 23 1/4-25 cents. Carried over fryers all kinds mostly 20 cents. Light type broilers 17-19 cents without clearing. Turkeys unsettled Demand light for light supplies Few lots bronze young hens 36 cents.

Receipts July 31 included Delaware 4,000 lbs, Maryland 16,000 lbs

Wholesale selling prices No 1 and fancy quality broilers light type under 3 lbs 17-19. Broilers or fryers heavy type 3-4 lbs 20-25 Roasters 18-22, pullets 4 1/2 lbs and over 28-29. Hens heavy type 19-25 light type 15-19 Old roosters 12. Ducks: Pekins 25-28 Turkeys young hens 36.

**LOANS**

For any farm purpose  
 Made the farmer's way

**LANCASTER PRODUCTION CREDIT ASS'N.**  
 36 E. Chestnut St.  
 Lancaster, Pa.  
 Ph. Lanc. 3-3921

**24-Hour Service**

ON  
**1956 AUTO TAGS**  
**EDWARD G. WILSON**  
 Notary Public  
 16 S. Lime St. Lancaster, Pa.



**LOOKING FOR RESULTS?**

**Try WIRTHMORE 14 Fitting Ration**

You can't beat this feed for fitting your cows. A 14% protein ration available with or without pellets, it contains all of the top quality ingredients needed to fit your cows and keep them in perfect health.

Year after year, on hundreds of farms and with every breed, Wirthmore Fitting Ration is building record-smashing herds in production and in showing.

Why not try it and check the results for yourself?

**WIRTHMORE FEEDS**

- Hiestand, Inc. LeRoy M. Sensenig**  
 Marietta Ph-6-9301  
 Hinkletown Ph. Ephrata 3-2009
- Glenn H. Herr**  
 Manheim RD1, Ph. Landisville 3547
- Clem E. Hooper**  
 Ph. 8-3431 Intercourse