

INDUSTRIAL OUTLOOK

A generally favorable industrial climate for the rest of 1956 has been forecast by the Commerce Department, which also noted that some soft spots are evident. Prospects for construction and aircraft industries are reported brighter and sales of consumer durable goods are expected to hold at last year's high level. An easing of activity in the steel, farm machinery and textile industries are predicted.

Japanese exports of portable radio receivers soar.

Cattle Leading Cash Receipts From Marketing

Washington — (USDA) — Half of farmers' 1955 cash receipts for farm commodities in the United States came from the sale of five major commodities — cattle, wholesale milk, hogs, cotton and wheat. Cattle and calves accounted for 16.7 percent, wholesale milk 12.2 percent, hogs 9.9 percent, cotton 9 percent, and wheat 5.7 percent. Thirty years ago, according to the United States Department of Agriculture, cotton receipts led all the rest, cattle was second, hogs third as in 1955, wheat fourth, and wholesale milk fifth.

States Summarized

Changes in farmers' cash receipts for farm products in the country as a whole and in each of the 48 states are shown in the bulletin, publication of which is announced today by the Department.

Each page gives a summary of the data for a State. Pages appear in alphabetical order, from Alabama to Wisconsin. On each page are graphs that trace the development of cash receipts, as a percentage of the total, for two to four important farm products by five-year intervals from 1924 to 1955. Tables give percentages of State totals of cash receipts of each of 12 commodities at the same 5-year interval in the 30-year period covered by the report. Summaries of the United States as a whole are also given.

Average Sizes Shown

In addition, the tables show the average size of farms at each five-year interval.

FOREST FIRES

The Forest Service, together with Munital Foundation, a nonprofit group, are studying ways of controlling — or preventing — bolts of lightning and violent hailstorms in areas where they can do heavy damage to persons or property. Lightning accounts for millions of dollars worth of damage to property each year, particularly in forest areas, which is estimated at \$10 million a year.

Weather Wet, Crops Suffer

(Continued from page one)

wildfire by proper management at seeding, and in seed beds," Mr. Sloat reminded. Wildfire can spread from field to field.

Corn in the Garden Spot is tall. Infestations of corn borer are perhaps heaviest in the past five years. Early sweet corn was especially hard hit by worm damage, causing market depreciation and lowered quality. Further corn borer threats are not too serious, but the second brood will be on the wing here between Aug. 15 and 20.

Most vegetables are late, and sweet corn quality is improving day by day.

There have been isolated reports of late blight in tomatoes, but by using a high copper concentrate and by double spraying, it can be eliminated. Being airborne, the blight can spread from one field to another, from tomatoes to potatoes. Green-wrap tomato marketing has been hit by adverse weather too.

Leaf hoppers are very abundant in potato and alfalfa fields. Insecticides are needed now, Mr. Sloat warns. After the second crop of alfalfa is harvested and growth is two to three inches high, spray with 1½ quarts of methoachlor to 40 to 100 gallons of water per acre.

Potatoes are not sizing well due to the backward weather, but vine growth is heavy. Should conditions moderate, good sized tubers could develop soon.

Small grains are reported in another story in today's Lancaster Farming.

NATIONAL DEBT

The United States Government started the new 1957 fiscal year with a national debt of \$272,750,813,649. This is \$1,623,409,153 below the debt outstanding on July 1, 1955. It still amounts to about \$1,623 for each of the 168 million men, women and children in the nation.

Steel users face a bleak supply situation.

Potato Field Days Stress Farm Safety

COUDERSPORT, Pa. — Farm Safety Week is being observed in farm pond "rescue" demonstrations this week at the annual field days of the Pennsylvania Potato Growers Association at nearby Potato City.

A helicopter and rescue team the U. S. Naval Air Station at Niagara Falls, N. Y., staged the rescue of a seaman from the waters of Lake Potato at noon Wednesday.

A farm pond safety demonstration was staged Wednesday evening by the Red Cross Chapter of Bardford.

A special exhibit of potato growing and grading equipment provided opportunity for de-

POEIO SECOND TIME

EL MONTE, Calif. — Robert Shipman, Jr., 14, has learned that polio can strike twice. Robert was stricken in 1943, when, during a period of a week, the disease struck three members of his family. At that time, his father and a brother, Billy, were also hospitalized. Recently, Robert was admitted to the Sister Kenny Memorial Hospital for the second time.

monstrations and safe use of family size farm machines. There was a spraying demonstration by helicopter. Newest types of machines were demonstrated in plowing, fitting, cultivating, spraying, digging and grading potatoes.

Avi-Tab

gives new life



For birds of any age, Avi-Tab gives new pep and vigor. Appetizing ingredients increase feed consumption, aid digestion. Trace minerals help build up run-down birds. Avi-Tab speeds convalescence after disease. Give Avi-Tab to chicks, growing birds, or layers on a monthly basis. It's easy to use — sprinkle over mash, work in lightly. Ten-day treatment costs 1¢ or less per bird. Ask for Dr. Salsbury's Avi-Tab now.

when you need poultry medicine... ask for



F. W. FISHER

Rep.—Ph. Leola 6-2482

LEACOCK, PA.



a little better feed may CUT YOUR COST PER DOZEN EGGS

Chances are you buy your chicks with great care to get a heavy-laying strain. Do you feed them after they grow up to get all the eggs they're bred to produce?

Poultrymen who buy high-producing strains have found that Purina HIGH-EFFICIENCY Laying Chows help them get lots of eggs per bag of feed. Also to help keep heavy-laying birds in good condition which helps hold down mortality. Most poultrymen who have tried Purina HIGH-EFFICIENCY Chows have found that they got so many more eggs per bag that they LOWERED THEIR FEED COST PER DOZEN EGGS. This was true even though Purina cost a

little more per bag than lower-efficiency feeds.

Try Purina for several weeks. Keep an accurate record. See for yourself how much money you save. We'll be glad to help you keep records and figure your costs.

PURINA HIGH-EFFICIENCY LAYING CHOWS



Wenger Bros.
Rheems

H. S. Newcomer
Mt. Joy

Warren Sickman
Pequea

B. F. Adams
Bird-in-Hand

J. H. Reitz & Son
Millway

J. Fred Whiteside
Kirkwood

Snader's Mill
Mt. Airy

John J. Hess II
Intercourse—New Providence

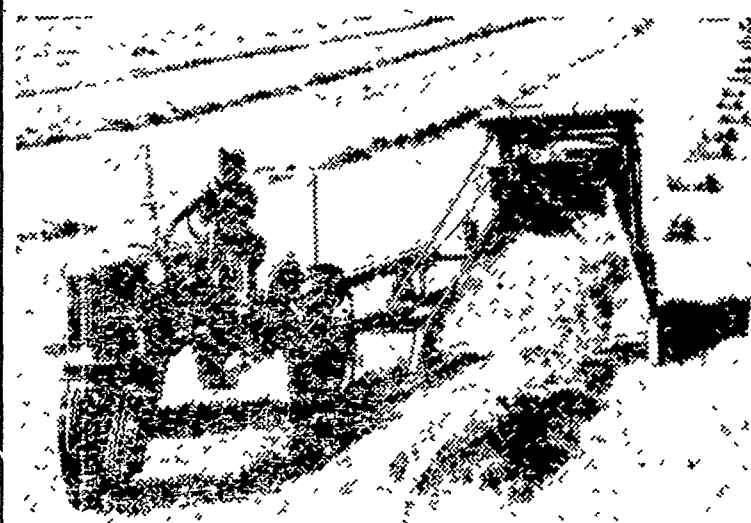
John J. Hess
Vintage

John B. Kurtz
Ephrata

S. H. Hiestand
Salunga

James High
Gordonville

PROTECT YOUR HAY'S PROTEIN



With a ROTO-BALER, you seal leaves inside round bales that shed weather like an umbrella. In the leaves, you save ¾ of the protein content of your hay... the real punch for animal growth and health.

- ★ Leaves are sealed in
- ★ Weaner is sealed out.
- ★ Livestock prefer hay from round bales.
- ★ Round bales can't buckle or break.
- ★ Less twine cost per bale — per ton.
- ★ ROTO-BALER costs less to own and operate.



WONT YOUR HAY SPOIL IN THE RAIN, BULLDOZ?
NOT THIS YEAR, FERO ROUND BALES KEEP HAY DRY.

ROTO-BALER is an Allis-Chalmers trademark.



When your hay is ready to bale, call us for a demonstration. Let us prove every word we say.

L. H. Brubaker
Lancaster, Pa.

Snavelys Farm Service
New Holland, Pa.

N. G. Myers & Son
Rheems, Pa.

Mann & Grumelli Farm Serv
Quarryville, Pa.

L. H. Brubaker
Lititz, Pa.

R. S. Weaver
Stevens, Pa.

THE STORE WITH THE CHECKERBOARD SIGN

