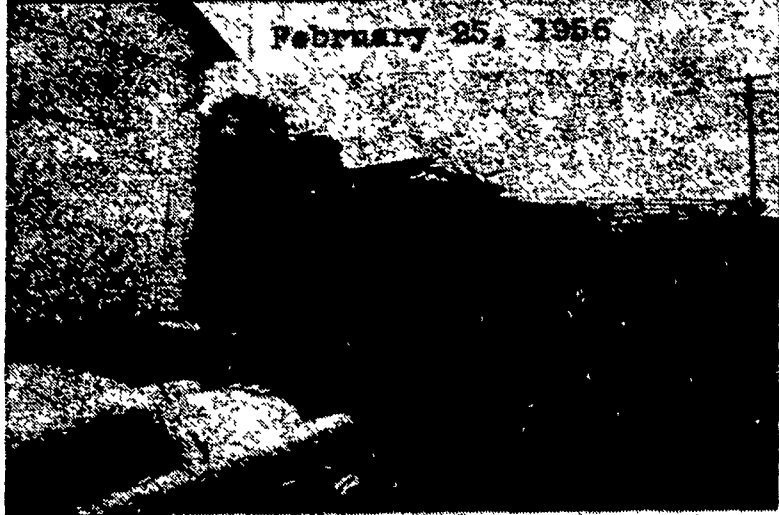
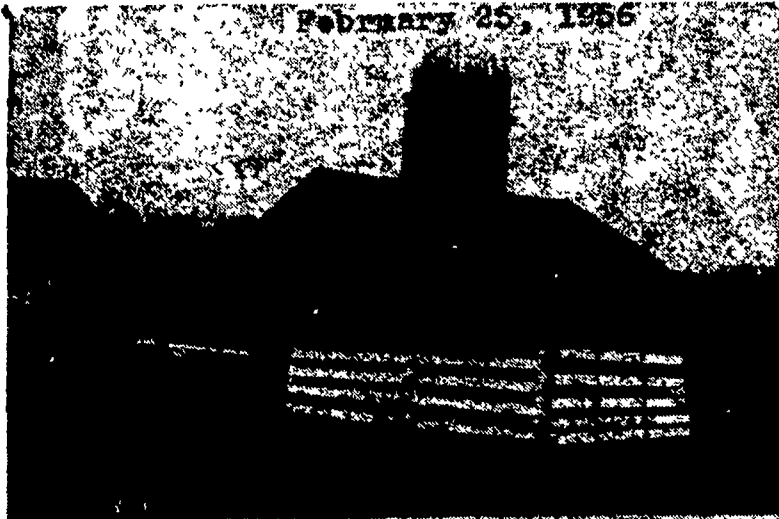


### Chapters of a Barn



Here are three dated chapters of a barn, one owned by Aaron S Glick in southern Lancaster County. The top photos show what destructive winds did in February, and, in the bottom picture, cleanup crews of friends and neighbors who moved in a few weeks later. In this edition of Lancaster Farming, another chapter is recounted, the construction of another barn — a typical Lancaster County barn-raising. (Lancaster Farming Staff Photo).

### Barn Raising On Glick Farm

(Continued from Page One)

Hostetter, David Myer, Fred Esbenshade, John Esbenshade, David Graham.

John V. Glick, Emanuel Nafziger, Enos B. Myer, Aaron Slaymaker, Aaron Slaymaker Jr., James Eby, Harlan H. Hoover, Earl M. Johnson Sr., Cyrus Graeff, Samuel P. Glick, Samuel Lapp of Maryland, Amos L. Zook Jr., C. S. Petersheim, Moses E. Stoltzfoos, Jay R. Leever, George I. Knight, Christ B. King, A. Clyde Kreider, John B. Stoltzfoos.

Carlton Homsher, Bill Rutter, J. Robert Miller, Irvin Slaymaker, Sam King, Sam Stoltzfoos, Omar Stoltzfoos, William J. Townsley, Mason Druck Jr., B. Clair Aument, Harry E. Kreider, Seth J. Lapp, Herbert Hess, Jason Weaver, John Logan, LeRoy Hershey, John M. Clymer, Ivan Clark, Milton A. Esbenshade, Hiram Bollinger Jr., LeRoy S. Lapp, Christian Lapp. — Samuel Lloyd Glick, Amos L. Stoltzfoos, John S. Glick, Elmer S. Glick, Elmer L. Fisher, Benj. J. Fisher Jr., Jacob S. Beiler, David E. Lapp, Samuel K. Petersheim.

Among those helping Mrs. Glick in the kitchen were Mrs. B. Clair Aument, Lydia King, Mary Ann Lapp of Maryland, Elizabeth Stoltzfoos, Lena Lapp, Lucy Lapp, Linford Lapp, Evelyn Rutt and Maryetta Lapp.

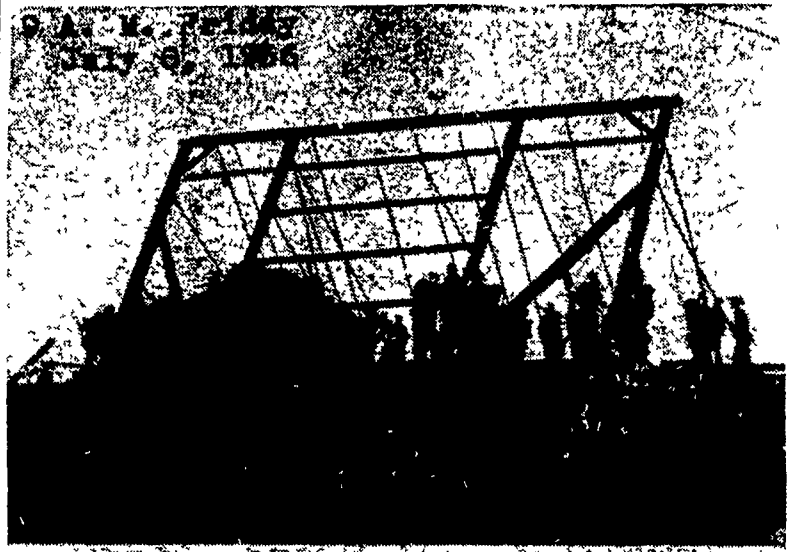
Materials for the barn were pre-cut and laid in position on the ground just south of the barn site. Sections were assembled on the floor of the barn, then raised into position with ropes, manpower, and pike-staves. Some material was salvaged from wreckage of the previous barn, other material was trucked to the Glick farm by L. J. Denlinger, Co., of Leaman Place.

In the series of photos in today's Lancaster Farming, the time shown indicates the hour during which the depicted work was accomplished.

senior three year-old, in the Herd Improvement Register, in the 305-3x division and met calving requirements. Her dam, Sterling Princess, has a record of 16,307 lbs of milk and 786 lbs of fat, made as a five year-old, in the 305-3x division and met calving requirements. "Soma" was sired by Count Sterling, that has six sons and 72 tested daughters in the Performance Register of the American Guernsey Cattle Club.

During the week of April 30-May 4th, the nation's auto production sank to the lowest level of the year, when a total of 116,165 cars were built.

### From Nine to Three



A short day, it may have been, but much work can be accomplished when 90 friends and neighbors pour in to build a barn. Here is a series of three pictures showing the Aaron S. Glick barn-raising, with time indicated on each. (Lancaster Farming Staff Photo).

### Schuylkill Haven Cow Owned by Schwalm Wins AGCA Citation

PETERBOROUGH, N. H. — A new record placing eighth in milk and ninth in fat production among the 10 highest of the Guernsey breed in her class has just been completed by the registered cow, Sterling's Sonia, a senior four year-old, owned by Leslie J. Schwalm, Kulespring Farm, Schuylkill Haven, Pennsylvania.

of milk and 734 lbs of fat in 365 days on two times daily milking and was bred to meet calving requirements. Converted to everyday terms, this record-breaking production represents approximately 7,010 quarts of high-quality milk.

This purebred cow was bred for production. "Sonia", who is classified, Very Good for type, produced 10,766 lbs of milk and 524 lbs of fat, as a junior two-year-old in the Herd Improvement Register in the 305-3x division, and 12,707 lbs of milk and 614 lbs of fat as a

"Sonia" produced 15,072 lbs

### Elk County, Pa., Sweeps Honors in Guernsey Production

PETERBOROUGH, N. H. — Registered Guernseys swept just about every honor for milk fat production during the DHIA testing year just completed by the Elk County, Pa. DHIA Association.

Youngdahl's Dairy of Brockport had the highest group of three cows for exceptional fat production in Highland Vale's Belflower with 11,864 lbs of milk and 578 lbs of fat; Keystone's Flower, with 10,794 and 542; and Keystone's Twila, 9763 and 514.

"Belflower" also became the second highest lifetime fat producer in the county with 89,449 lbs milk and 4364 lbs fat in eight years, an average of 11,181 and 546. The only cow above her had been on test for 12 years.

The third high lifetime fat producer for the county was also a registered Guernsey, Jory, with 83,587 lbs milk and 4333 lbs fat to her credit. The herd with the highest average fat production for the county association was the purebred Guernsey one owned by Harry McMinn and Sons of Ridgway. This fine herd averaged 439 lbs of fat during the testing year recently completed.

### Madeira Farm Cows Finish HIR Records

PETERBOROUGH, N. H. — Eugenia C Madeira, Berwyn, is the owner of two registered Guernseys that have recently completed Herd Improvement Registry production records, according to the American Guernsey Cattle Club.

**Sawette**  
NEW POWER - NEW ENGINEERING -  
New equipped with double power, double fuel capacity.  
Trims weeds on rocky or uneven ground. Cuts grass or weeds close to buildings. Clips roots or undergrowth.  
Cuts with ease wherever a man can walk, wade, or row a boat. Equipped with 2 1/2 h. motor, 1-gal. capacity gas tank, 26-inch oscillating cutter bar. Weighs only 26 lbs.  
4 TIMES FASTER THAN ORDINARY METHODS  
America's most revolutionary chain saw cuts trees, or any growth up to 4" in diameter, level with terrain while operator is in upright position. Speedy, efficient, rugged, the Sawette is the answer to heavy growth clearing problems.  
PRODUCT OF HOFFCO INC., RICHMOND, INDIANA

**MAST Saw and Knife Service**  
605 Marietta Ave.  
Lancaster Ph. 24291

**APPLICATION BLANK**

## American Mechanics Building and Loan Association

"Lancaster's Oldest" Organized 1868

Meets Fourth Monday of Each Month  
58 N. Duke St., Lancaster Pa.

New Series Opens Monday, July 23, 1956. Shares \$1.00 per month.

I hereby subscribe for \_\_\_\_\_ shares. **4%** currently paid on installment shares

GIVE FULL NAME INDICATE MISS OR MRS.

ADDRESS \_\_\_\_\_

MAIL OR PRESENT APPLICATION TO OFFICE, OR CONTACT ANY ONE OF THE FOLLOWING DIRECTORS.

Bruce A Boggs	S Richard Harr, Esq.	O. J. Smith, Jr
John D Brenner	Lester H. Herr	Robert A Smith
H Clay Burkholder, Esq.	E Melvin Hubley	Earl V. Stauffer
H. F. Diffenderffer	E L Matterer	Albert F. Witmer
H Stanley Harner	Harold E. Smith	

Arthur W Siegler, Treas. Joseph R. Byars, Solicitor