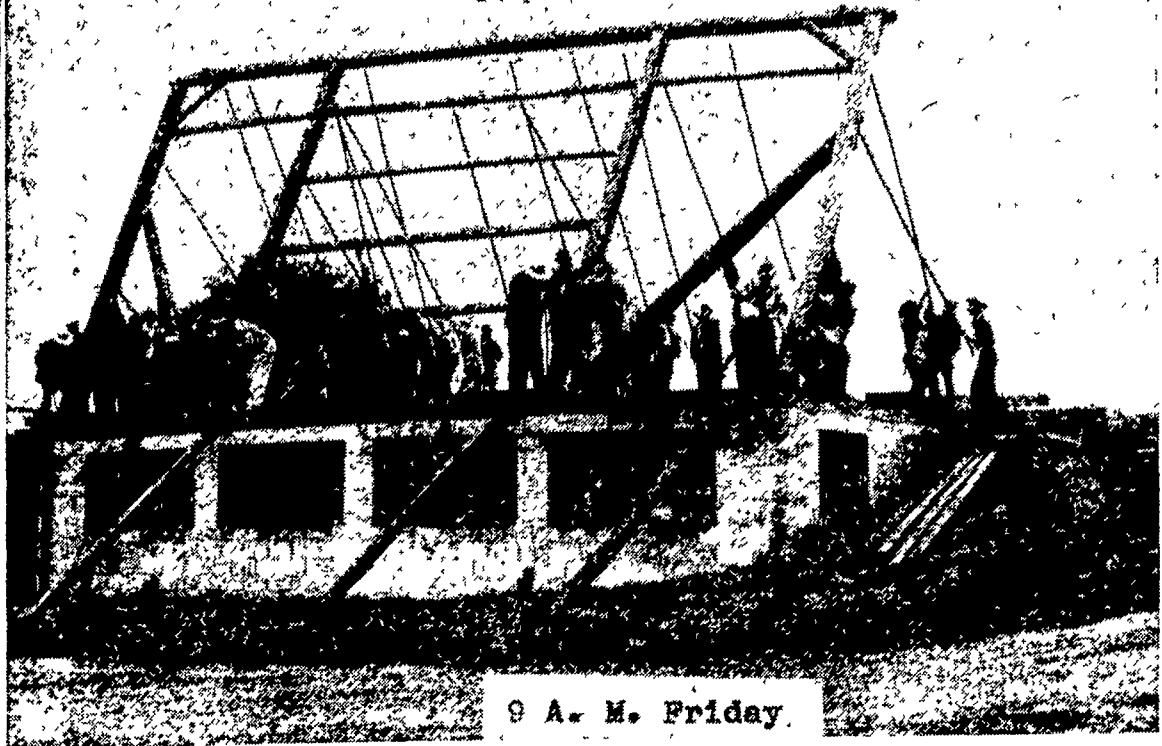


First Frame Is Placed



9 A. M. Friday

Pike poles, rope, manpower and muscle pushed and pulled together to raise the first section of the new barn on the Aaron S. Glick farm this weekend — as another

old-time Lancaster County barn-raising took place. (Lancaster Farming Staff Photo).

Sleeping Sickness Again Seasonal Threat to Horses

A warning against the approaching dangers of sleeping sickness in horses and mules was issued today by the American Foundation for Animals Health. "This condition is spread by biting-insects, and with a build-up in insect numbers occurring now of warmer weather, prompt action should be taken to protect horses and mules against this disease," the Foundation says.

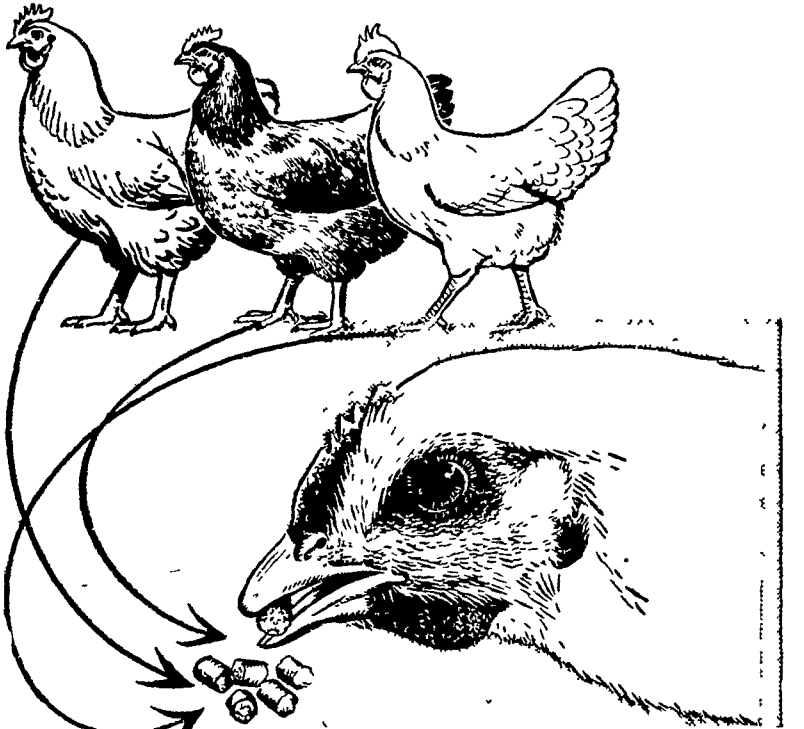
Vaccination by veterinarians is the only way of preventing the disease. Horses of all ages should

be vaccinated each year, since firm protection lasts for only one season. In addition to the vaccination program, veterinary medical officials suggest keeping the animals away from low, swampy areas and instituting good insect control programs.

"The symptoms of sleeping sickness resemble those of heat stroke, rabies and some other ailments, making an accurate veterinary diagnosis of great importance," the Foundation says.

"Losses may run as high as 60 per cent in a group of unvaccinated animals. Afflicted horses and mules should be isolated under insect-free conditions or mosquitoes and other carriers cannot spread the disease further."

NEW PURINA Bite-Size CHECKER PLAN OF GROWING PULLETS



CUTS GROWING COST by cutting feed waste

Compared to usual mash feeding, the new Bite-Size Checker plan can make a big cut in your growing cost. Chicks start eating the new, smaller Checkers when only 4 to 6 weeks old. It takes less feed because pullets spill less out of the hoppers. And the few Checkers that are spilled are quickly picked up—not lost on the ground like mash.

Save more money with PURINA PULLET DEVELOPER

When pullets are 10 weeks old, change to Pullet Developer Checkers which produce a big laying bird at still lower cost.



James High
Gordonville

S. H. Hiestand
Salunga

Wenger Bros.
Rheems

H. S. Newcomer
Mt. Joy

Warren Sickman
Pequea

B. F. Adams
Bird-in-Hand

J. H. Reitz & Son
Millway

J. Fred Whiteside
Kirkwood

Snader's Mill
Mt. Airy

John J. Hess II
New Providence

John J. Hess
Vintage

John B. Kurtz
Ephrata



Colorful Dedication Ceremonies At Angus Opening in St. Joseph, Mo.

A rousing welcome was given members of the American Angus Association by citizens and city officials of St. Joseph, Mo., as hundreds of visitors were conducted through the Association's new national headquarters building following dedication ceremonies Friday, June 29.

The colorful dedication of the \$350,000 office building at 3201 Frederick Boulevard began at 10 a. m. on the front lawn, with a moving invocation by the Rev. R. Kermit Roebuck, executive secretary of the St. Joseph Council of Churches.

Mayor Gives Welcome

Mayor Stanley I. Dale was introduced by Master of Ceremonies Frank Richards, executive secretary of the Association. "Mr. and Mrs. Black are now residents of St. Joseph, and we are going to make them feel at home," Mayor Dale told the audience of about 500 who had gathered for the morning event. He reviewed the work done by the St. Joseph committee of businessmen who had worked to bring the Association's headquarters here and complimented the members and board of directors on the efficient structure and modern features of their new home.

In a response Otto G. Nobis of Davenport, Iowa, president of the national breed registry association, dedicated the new headquarters in the name of the more than 32,000 members who own it. "This building belongs to the thousands of Angus breeders who have been members of the Association over the 73 years of its existence. In turn, it will belong to other thousands of Angus men who will follow in the footsteps of the founders," he said.

Introduces 15 from Board

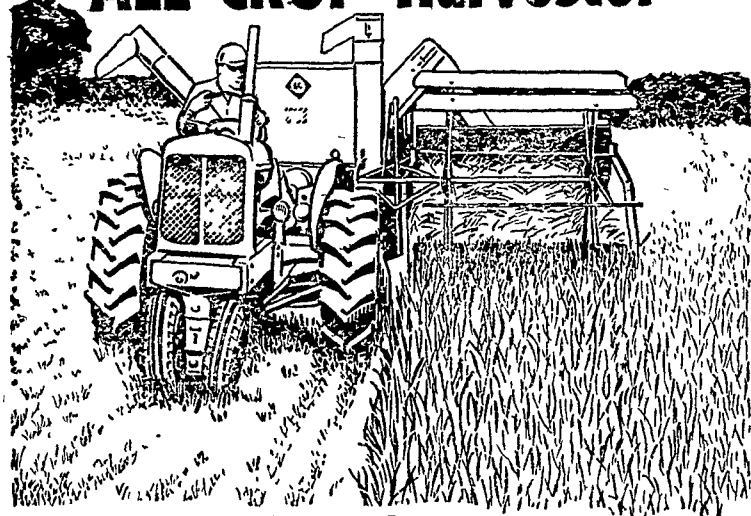
Mr. Nobis then introduced the 15 members of the board of directors who had traveled from as far away as Oregon and Virginia to attend the event. Members of the building committee, the architects, and builders, were also introduced by President Nobis.

Following the dedication, groups of visitors were conducted through the flower-banked offices by the Association's field staff, acting as tour guides. Among special features of the modern office building which they observed were the IBM Department where the complicated work of registering the cattle is recorded by efficient business machines, the public relations department and photographic darkroom where breed promotion work is carried out, and the new kitchen and recreation room which have been built into the lower level for the use of employees.

YEGG FAINTS 3 TIMES
FORT WORTH, Texas—Three safecrackers were hard at work in a store when police sneaked in, surprising them. Whereupon one of the three, Jimmy Coffey, 22, fainted. Later he came to and fainted again. In all, he fainted three times before officers could take him to the city jail.

When a man is satisfied that he is qualified for a position, the law of gravity cannot measure the attraction.

Model 66 ALL-CROP Harvester



A New Standard of Harvesting

Now comes a new Six-Foot ALL-CROP Harvester — the Model 66 — bringing a still higher standard of harvesting — for grains, beans, sorghums, and high-value seed crops.

Crops travel in a broader WIDE-FLOW stream to the famous rubber-cushioned bar cylinder. You can easily harvest two wide-planted rows of soybeans or sorghums.

A new STEP-UP strawrack boosts capacity in over 100 crops, gives straw a faster, rougher ride; separates cleaner.

Own an ALL-CROP Harvester and make 1953 the best harvest year you've ever had. Come and see us — and remember to ask the price. The New Model 66 is a leader in dollar value as well as performance.

ALL CROP is an Allis Chalmers trademark.

Hear farm news — music — markets — NATIONAL FARM & HOME HOUR — NBC — every Saturday

ALLIS-CHALMERS
SALES AND SERVICE

For Limited Time Only - Special Reduced Prices on SP 100 Self Propelled Harvester

L. H. Brubaker Snavelys Farm Service
Lancaster, Pa. New Holland, Pa.

Mann & Grumelli Farm Serv R. S. Weaver
Quarryville, Pa. Stevens, Pa.

N. G. Myers & Son L. H. Brubaker
Rheems, Pa. Lititz, Pa.