

## International Dairy Show Has New Directors

CHICAGO — Four new directors of the International Dairy Show are announced by the show headquarters in Chicago.

They are John F. Cuneo, Chicago, owner of the well-known Hawthorn-Melody Farms and Dairy, Paul Dikson, Kenton, Ohio, Brown Swiss cattle breeder, W. P. Watson, Ontario Livestock Commissioner, Toronto, Canada, and William G. Karnes, President of the Beatrice Foods Co., Chicago. This increases the number of show directors to 23.

W. A. Wentworth, Frankfort, Kentucky, is President of the International, Dean Emeritus H. H. Kildee, of the Iowa State College, Ames, and also William Wood Prince, President of the Chicago Stock Yards, and owner of the International Amphitheatre, are members of the show's Advisory Committee.

Scheduled Oct. 6-13

The fourth International Dairy Show and World Championship Rodeo is scheduled for Oct. 6 to 13 in the recently enlarged International Amphitheatre, the country's largest show building.

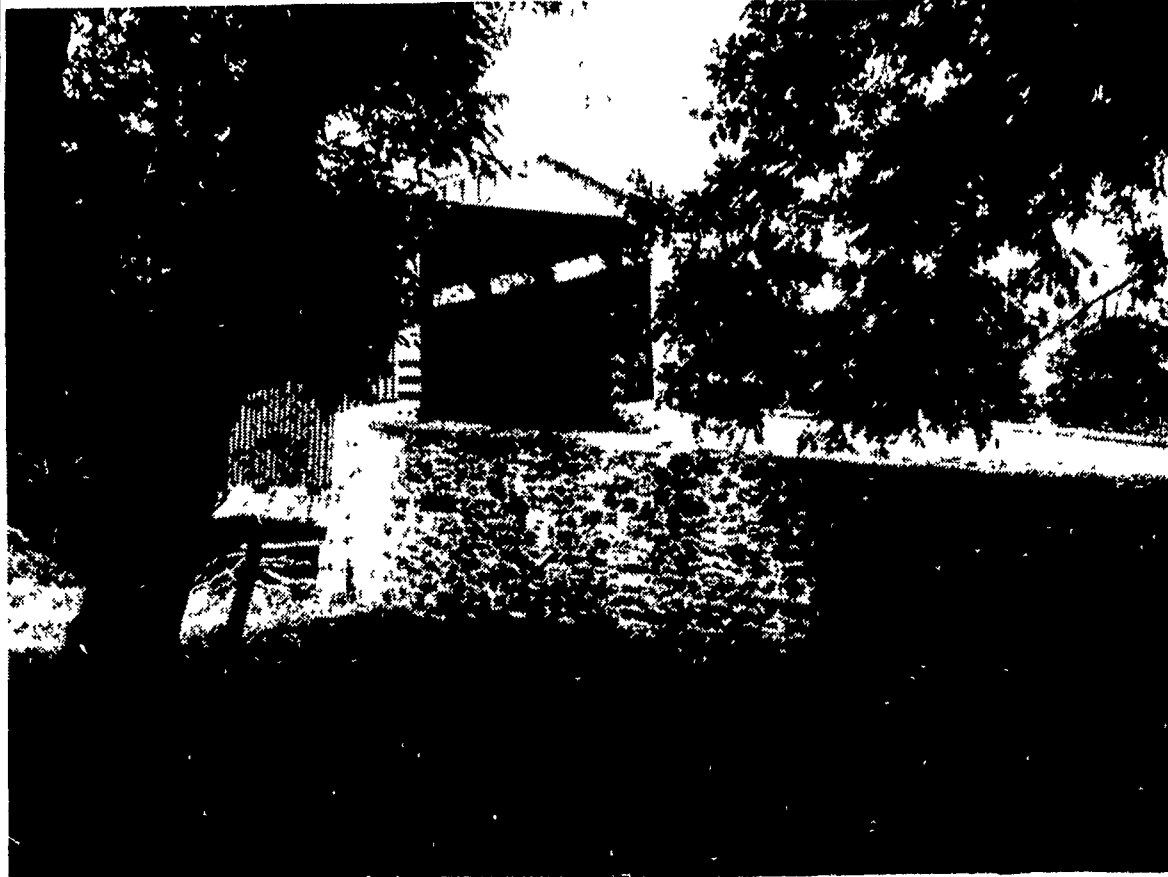
The management announces that all of the show cattle will be quartered in the new 4-acre addition to the International Amphitheatre equipped with the most modern ventilation system. Judging will take place in the air-conditioned arena seating 8,000.

The Jersey breed will feature its national show in conjunction with the International Dairy Show this year. Jerseys, along with Guernseys and Brown Swiss, will be judged on Tuesday and Wednesday, October 9 and 10.

Holsteins, Ayrshires, and Milking Shorthorns are scheduled for Thursday and Friday, Oct. 11 and 12, and all breeds in the International's Junior Show, open to 4-H and FFA exhibitors, will be judged on Monday, Oct. 8, by the same judges who officiate in the open classes of each breed.

Judges for International  
Judges announced for the 1956 International are Gordon A. Cairns, Dean of Agriculture, University of Maryland, College Park, Ayrshires, Harold Kaeser,

## Another Covered Bridge



Between Paradise and Intercourse, this ancient covered bridge spans a stream and carries an unusually heavy amount of traffic between the two towns. This is one of some 40 covered bridges in Lancaster County. (Lancaster Farming Staff Photo).

### MINE DEATHS UP

Roof falls in coal mines caused 27 per cent more deaths during the first three months of 1956 than in the corresponding months of 1955. Bureau statistics showed there were 121 coal mine fatalities in the first quarter of 1956, compared to 115 a year ago.

Dairy Science Department, Ohio State University, Columbus, Brown Swiss, William Hitz, of Polk City, Iowa, Guernseys, Harvey Swartz, of Waukesha, Wisconsin, Holsteins; Professor W. W. Yapp, dairy specialist at the University of Illinois, Jerseys, and John O. Rowe, of Davis, California, Milking Shorthorns.

The National Committee on 4-H Club Work, Chicago, announces that the National 4-H Dairy Conference and Tour, held at the Chicago show for the first time last year, will be repeated on a larger scale. Top 4-H boys and girls from 18 states will attend this year's show.

### Soil Bank Topic For Angus Meet At State College

Possible effects of the soil bank program on Pennsylvania agriculture will get close study this Saturday when members of the Pennsylvania Aberdeen Angus Association meet at State College.

Scott L. French, fieldman-secretary of the state group, announces that the featured speaker of the annual meeting will be Ervin L. Peterson, Assistant Secretary of the U. S. Department of Agriculture. "Mr. Peterson will place special emphasis on how the program will affect the beef industry here," French says.

The soil bank program was recently signed into law by President Eisenhower, a Pennsylvania Angus breeder himself. Peterson's speech will follow a luncheon and business meeting at the Student Union Building on the Penn State campus, the Angus fieldman reports.

Theme of the morning session

is "How Big Should Angus Be?" Discussion and demonstrations will be led by Professor Herman Purdy of the University staff and Thomas King, extension livestock specialist. The program is scheduled for 10 a. m. at the University beef barn.

Also on the agenda for Angus breeders will be the election of new officers for the coming year. The state organization is now headed by George R. Atterbury, Chester Springs, Pa. Charles J. Dannemann, Towanda, is vice president while John G. Auld, Homer City, is secretary.

## Neppco Clinic Will Scan Egg Quality Ills

SYRACUSE, N. Y. — Is your egg quality slipping? Northeastern marketing specialists believe it is, so an egg quality clinic, staffed with the finest "doctors" in the area, will be on hand at the annual exposition of the Northeastern Poultry Producers Council (NEPPCO) to make an expert diagnosis.

The three-day convention, expected to attract more than 7,000 poultrymen from 14 states, opens in the War Memorial Building here on Oct. 2.

Egg quality "physicians," under the leadership of John Scholes, Beacon Milling Co., Cayuga, N. Y., will staff the clinic throughout the exposition. Growers, egg handlers and marketers are expected to bring in a wide range of egg quality problems for expert consultation and remedial prescriptions.

"We're now in the process of bringing together some of the nation's top authorities on producing and maintaining high quality in eggs," Scholes commented. "If your eggs are failing to bring top market prices because of quality defects, this egg clinic is the spot to bring the 'patient'."

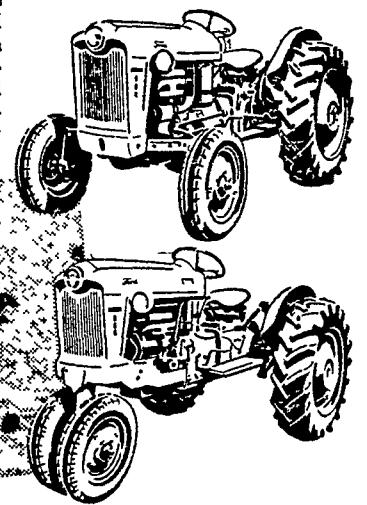
He went on to point out that excellent interior quality is a key factor in the economic well-being of today's poultry industry.

### Seven Cattle Killed By Lightning Bolt

Seven head of cattle on the Jacob B. Stoner farm, R2 Mechanicsburg, were killed by lightning during a storm Sunday night. Four other cows were stunned, and probably will have to be killed.

Value of the cows was placed at \$4,000. They were grouped under a tree when the bolt struck. Four cows escaped.

THE 800 SERIES — 4-Wheel — Here's the time-proved Ford 4-wheel design that's famous for its stability, handling ease and versatility. These powerful tractors offer more for your tractor dollar.



Here's a BONUS OF POWER...

### FORD's Full 3-Plow Tractors

Yes sir, here's real power! These are Ford's most powerful tractors... designed and built to handle the big jobs faster, easier and better. They have the power you need, the features you want and the performance that can mean bigger profits for you. See them in action and watch the work fly with Ford's 800 and 900 Series Tractors.

THE 900 SERIES — Tricycle — Featuring Ford's new tricycle design, these full 3-plow tractors offer outstanding performance for row crop farming. Come in and see the new Ford Front Mounted equipment—2 and 4-row cultivators and planters, corn harvesters, corn pickers and farm loaders.

Be sure and see Ford's full 2-plow tractors, too... the 4-wheel 600 Series and the tricycle 700 Series.

Come in soon... see what FORD's bonus of power can mean to you... ask for a demonstration



### Haverstick Bros.

Columbia Pike Lancaster Ph. 2-5722

### Allen H. Matz

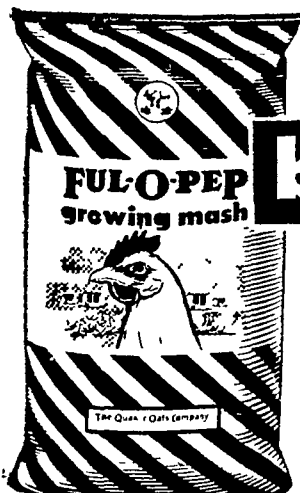
Denver Ph. 7-6502

### Elizabethtown Farmers Supply Inc.

Ph. 7-1341

### Conestoga Farm Service

Quarryville Ph. 282



## Ful-O-Pep Growing Mash

# builds better pullets

### at less feed cost

The Ful-O-Pep Pullet Growing Plan and nutritious Ful-O-Pep Growing Mash form a combination that can't be beat for raising big, husky pullets at a low feed cost. Ful-O-Pep raised birds mature into healthy, full-bodied pullets than can stand the strain of heavy continuous egg production.

see us for details

J. C. Snively & Sons, Inc. D. W. Hoover Paul M. Ressler & Son

Landisville, Pa.

East Earl, R. D. 1, Pa.

Paradise, Pa.

3511

New Holland 4 7201

OV 7-2493

Ross C. Ulrich

J. C. Walker & Son Millport Roller Mills

Peach Bottom, R. D. Pa.

Gap, Pa.

Lititz, R. D. 4, Pa.

Hensel 19R3

Hickory 24169

Lititz 6 8831