

## 35 "Good Neighbors" Lend Hand To Stricken R1 Holtwood Farmer

By LF Staff Reporter

Thirty-five friends and neighbors gathered Saturday to lend a helping hand to Percy Martin, R1 Holtwood, and his two sons, Ira and Donald, who have taken over the task of working the farm since their father was stricken with a heart attack about two years ago.

He has been confined to his bed since the attack.

By Saturday evening, the group had dug ditches, hauled stones from a nearby farm, hauled manure to the fields and laid pipe in the ditches — completing the work in time to meet the deadline set by the milk company to which the Mar-

uns had been shipping. Due to their father's condition, the sons have been dividing their time between their own work and working on Mr. Martin's farm, located on the road connecting Cochran's Corner and Liberty Square.

Because of all the work involved, they had fallen behind schedule.

The milk company to which they have been shipping gave Ira and Donald notice problems of drainage about the milk house and water from the house must be cleared by July 1 or their milk would not be accepted.

### Good Neighbor Policy



Friends and neighbors of Percy Martin, Holtwood R1, lent a helping hand to the bedridden farmer on Saturday. A group of them are shown above working on a drainage ditch on the farm. (Lancaster Farming Staff Photo)



### Logans Celebrate

#### 25th Anniversary

Mr. and Mrs. L. L. Logan, who operate the Logan Poultry Farm and Hatchery at R1 Kennett Square, Saturday celebrated their silver wedding anniversary at their home.

Members of the 1931 wedding party in Butler, Pa., were guests at a dinner in the home. Later other guests were received on the lawn. Congratulations were received by the Logans from friends all over the world.

Martin Eshleman and Everett Kreider, together with Golden Davis, fieldman from the Interstate Milk Producers Association contacted friends and neighbors and arranged for Saturday's project.

Included in the group working on the farm Saturday were

Jesse Cutler, Everett Kreider, Roy Kauffman, Carl Herr, Oliver Shacffer, Luther Kauffman, Walter Martin, Robert Powell, G. L. Louthean, Richard Louthean, Raymond Smoker, Larry Miley, Ita Martin, Leon Kreider, Stanley Kreider, John Denlinger, Henry Burns, Sam Sprout, Harry Wiggins, Clarence Murray, James Humphrey, Golden Davis, Wilmer Bolton, Glenn Kreider, Earl Herr, Sylvan Smoker, Robert Smith, Martin Eshleman, Donald Martin, Joseph Sinclair, Ted Beck, John Burkins, Paul Ankrum, William Sprout and William Ambler.

### \$270,000 Alloted for State Bridge Repair From Heavy Rains

HARRISBURG — Authorizations totaling \$270,000 for the repair of roads and bridges in Lawrence, Butler and Armstrong Counties caused by heavy rains on June 16 and 17, have been approved by Secretary of Highways Joseph J. Lawler.

The heaviest damage, about \$200,000, was in Lawrence County where several small bridges were washed out, and shoulders and surface on roads adjacent to streams were damaged. In Butler County damage totaled \$10,000 and in Armstrong the damage approximated \$60,000.

Rehabilitation work which started early Sunday, June 17, was handicapped by heavy rain storms during the week.

## Pike County Now Brucellosis Free In State Drive

HARRISBURG — Progress on two important agricultural fronts was reported today by State Agriculture Secretary William L. Henning.

Mercer County became the 37th in Pennsylvania to win honor roll status in the elimination of brucellosis or Bang's disease, and

Pike County became the 38th among the State's 67 counties to be set up as a county-wide soil conservation district.

"Programs in these two fields of departmental activity affect the health and welfare of all citizens of the Commonwealth," Dr. Henning declared.

Since he became secretary 18 months ago nine counties have been certified by the State and Federal Departments of Agriculture as brucellosis-free and eight counties have joined the expanding soil conservation district movement.

When the first county-wide brucellosis test was made in Mercer County in March 1954 the disease which causes abortion in cattle was present in 65 per cent of the herds and 14 per cent of the cattle. To attain certification 95 per cent of the herds and 99 per cent of the cattle must be free of the bovine disease. When county-wide tests were made this spring only 11 per cent of the herd and two tenths of one per cent of the cattle were found to be infected, a highly satisfactory record, the Secretary declared.

Organization of the Pike County Soil Conservation District is now underway. As chairman of the State Soil Conservation Commission, Dr. Henning certified those county-wide farm organizations that are eligible to send delegates to a meeting called by the County Commissioners to nominate farmers for membership on a five-man district board of directors. As in all similar cases, establishment of the Pike County district was accomplished through passage of a suitable resolution by the county commissioners.

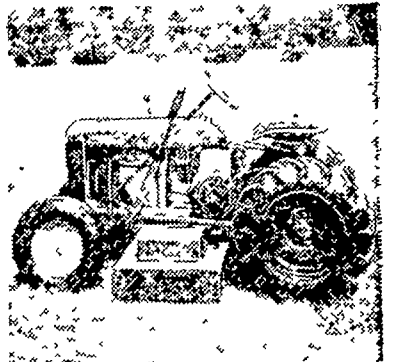
A free press, to work in a democracy, must be a really free press.

## Rabid Fox Attacks Cattle in Maryland

Harford County, Md., and York County, Pa., farmers have been advised a fox that attacked cattle in the Farm Grove, Pa., community showed signs of rabies.

Dick Reynolds, sawmill operator, killed the fox, and Dr. Thomas W. Brown, Fawn Grove veterinarian, sent the head to the Maryland Health Department at Bel Air where the rabies diagnosis was made.

### fun-work yard tractor.



- Mows big lawns the easy way
- Does all yard and garden jobs
- Clears snow in 1/3 time

## WHEEL-HORSE

RIDE-AWAY  
ONLY \$329.00

The Tractor That Turns Work Into Fun!

Yes, this amazing little tractor actually turns work into carefree FUN. Let the Wheel-Horse "Ride-Away" do the work around your place while you just sit and steer. Do lawn jobs in a jiffy with 3-gang mower that cuts a 5-ft. swath! Mounted rotary mower cuts 32" in winter with nary a huff or a puff. Plow, cultivate, use any of the 22 attaching tools to do all yard and garden jobs. This versatile fun-work tractor has 5 forward speeds and a reverse. It's powered by a husky 3 1/2 hp (or 2 1/2 hp) engine mounted on heavy channel steel chassis. Come in and see this popular Fun-Work tractor, today.



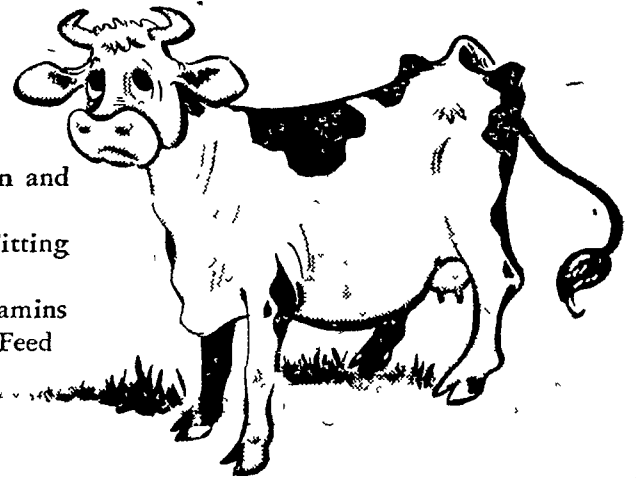
## Snavelly's Farm Service

NEW HOLLAND  
Phone 4-2214

# BUILD UP DRY COWS

## with Ful-O-Pep Fitting Feed

Give your dry cows a special vitamin and mineral boost. Condition them with bulky, nutritious Ful-O-Pep Fitting Feed, built around crimped grains and fortified with extra vitamins and minerals. Ful-O-Pep Fitting Feed sure builds big, strong, calves... prepares cows for heavy, continuous milking. Stop in soon.



J. C. Snavelly & Sons, Inc. D. W. Hoover Pa. W. Ressler & Son

Landisville, Pa.

East Earl, R. D. 1, Pa.

Paradise, Pa.

3511

New Holland 4 7201

OV 7 2493

Ross C. Ulrich

J. C. Walker & Son Millport Roller Mills

Peach Bottom, R. D. Pa.

Gap, Pa.

Lititz, R. D. 4, Pa.

riensel 19R3

Hickory 24169

Lititz 6 8831

Tractors and manpower, hydraulic scoops and manure spreaders did a king-sized job in clearing the farm of Percy Martin, R1 Holtwood, last weekend, as two sons, Ira and Donald, fulfilled instructions on correcting drainage problems. This series of three pictures shows part of the 35 friends and neighbors who gave a helping hand. (Lancaster Farming Staff Photo).