

**Bobst Offers \$100,000 to Lititz Park**

Elmer H. Bobst, chairman of the board for Warner-Lambert, has offered \$100,000 to restoration of Lititz Springs Park, one of the highlights of the bi-centennial celebration which came to a close there July 4.

"My main purpose is to see the park provide a place of amusement and entertainment for young people, to keep them off the streets, and to provide a safeguard against the all too precipitate development toward juvenile delinquency," he said.

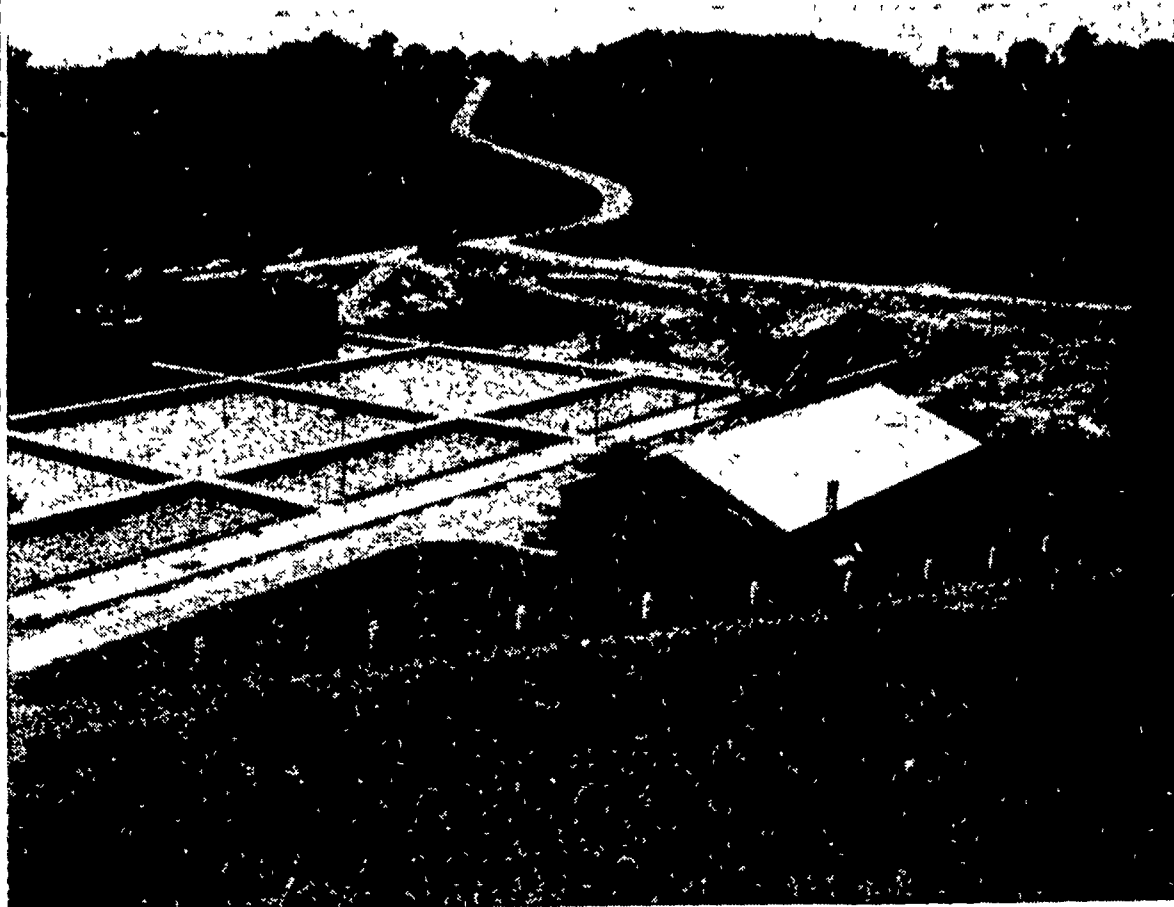
He requests that his gift be contingent upon several items, that the park be restored in an orderly manner, that perpetuity be guaranteed. Members of the Lititz Moravian Church, owners of the park, and the officials of Lititz borough council are to discuss the proposition

**Wheat Support Set At \$2 Per Bushel**

WASHINGTON — (USDA) — The U. S. Department of Agriculture announced today that on the basis of the July 1, 1956 parity price for wheat the national average support price for 1956-crop wheat will be \$2.00 per bushel, the same as announced by the Department April 23.

In the announcement of April 23, Secretary of Agriculture Ezra Taft Benson stated that in the event that 82½ per cent of the parity price for wheat as of the beginning of the marketing year (July 1, 1956) was more than \$2.00 per bushel the support price would be increased.

The parity price for wheat as of July 1, reported today by the Agricultural Marketing Service, is \$2.42. Since 82½ per cent of this is not more than \$2.00, the \$2.00 minimum national average support price announced earlier remains in effect, as do the minimum 1956 terminal and county wheat price-support rates announced by the Department on May 31.



Chester Municipal Authority's filtration plant at Pine Grove, on the southern Lancaster-Chester county line is currently undergoing an expansion program which will increase the daily capacity from 18 to 30 million gallons of processed

water for the City of Chester and its suburbs. Above is an overall view of the facility, including the six-year-old main plant. Work in progress, to cost a million and a half dollars, is to be completed in October. (Lancaster Farming Staff Photo.)

**New & Used Tractors & Farm Equipment**  
**CLYDE E. KEENER**  
 Located at Intersection Of Rt. 230 & 72  
 R. D. 3 Lanc. Ph. 4-6414  
 Sale 2nd Thursday each month  
 Private Daily

**STILL HUNGRY**  
 RIVERSIDE, Calif. — Jerry Leighton, 2, still complained of being hungry after attendants at a hospital relieved him of a meal of rusty nails, which had been washed down by a drink of gasoline. Jerry, evidently undamaged, wanted a cookie as he left the hospital.

**Sales Dates**

- July 7th — Florence M Neft, 600 Hodgson St., Oxford, real estate, 1:30 p. m.
- July 7 — Intercourse Community Sale, starting at 11 a. m. Household Goods, Farm Implements. Mennonite carriage, locust posts.
- July 7 — John J Lehman, half mile south of Quarryville, half mile west of Route 222, turn at Martin's Gas Station, household goods, 1 p. m.
- July 10 — Helfred, Inc. (Herbert Mowery, sales manager), half mile north of Oxford on Pine Street Road, premises known as Summer Farm, 68 Holstein dairy cows, nearly all vaccinated, with two clean blood and TB tests. 12:30 p. m. DST.
- July 12 — Della and Jay Frymyer, Rothsville, household goods, 6:30 p. m.
- July 14 — Alma E Erb, at Erb's Store, road from Mt. Nebo to Erb's Mill, Martic Twp., real estate and household goods, 12 noon DST.
- July 21 — William Handel Estate Rawlinsville Martic Twp., real estate and personal property, 12 noon DST.
- July 28 — Mrs. Ira K Stauffer, Manor Twp., on road from Letort to Washington Boro at Creswell, farming implements, household goods and some antiques. 12:30 p. m. DST.
- July 21 — By the Martindale Fire Hall, household goods.
- August 9 — Clyde E. Keener, 1½ miles n. of Lancaster (at intersection of Rts. 72 and 230), farm machinery, including tractors. Starts at 12 noon, through evening.
- August 11 — Charles O. and Agnes H. Fox, road from Bachmanville to Campbelltown, 13-acre farm, sheep, barn tools, household goods; also tract to timberland, 12:30 p. m.

**Philadelphia Milk Price Up 60 Cents**

Increased 60 cents to \$5.64, the value of fluid milk on the Philadelphia market per hundredweight has been figured for the summer months. Under Federal Order 61, prices for July August and September will be 60 cents higher than the previous three-month period. Two-thirds of the increase is the regular result of the federal pricing provision, and the remaining 20 cents from the increase in the formula index. This makes present quotations equal to those of last October.

**USED TRACTOR SPECIALS**

- John Deere L Cult. and Grass Mower
- 50 Farmall Cub and Cult.
- 54 Farmall Super A & Cult.
- 44 Farmall BN & Cult.
- 46 Farmall H & Cult.
- 40-62 Huber Threshing Tractor

**C. J. B. Hooper**  
 FARM EQUIPMENT  
 Phone 8-3501  
 INTERCOURSE PA.

**SAVE AND EARN**

With Lancaster's Oldest Building and Loan Association

- 4% currently paid on installment shares
- 3% on full paid shares - payable semi-annually
- 3% on optional shares credited semi-annually

Your money invested in first mortgages on Lancaster County homes

**American Mechanics Building and Loan Association**

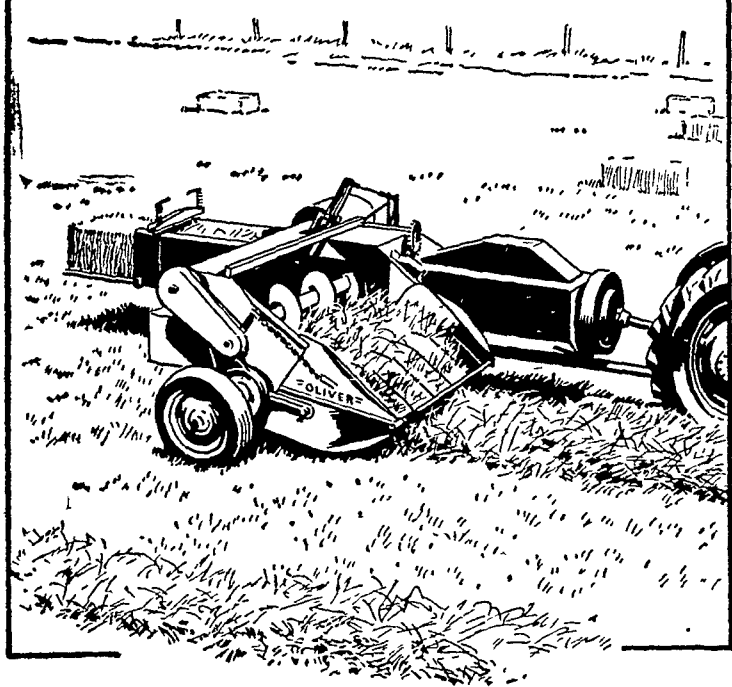
Call or See Joseph R. Byars, Attorney, 58 N. Duke St., Lancaster, Pa.

**Authorized Dealers**

- \* Master Mix
  - \* Ferguson Equipment
  - \* Lincoln Welders
  - \* Thermopane
  - \* Universal Milkers
  - \* Miller's Insecticides
  - \* Koppers Creosoted Posts
  - \* Wirthmore Feeds
  - \* Haverly Bulk Tanks
  - \* Sauder Loaders
  - \* Anhydrous Ammonia
  - \* Wheel A-Way Egg Washers
  - \* Irrigation Equipment
  - \* DeKalb Chix & Started Pullets
- HIESTAND Inc. Marietta 6-9301**

**Low Cost...Big Capacity**

**OLIVER MODEL 50 BALER**



You bale up to 9 tons per hour with the Oliver model 50. Handle hay gently from pickup to finished bale, save more leaves, more of your crops' goodness. You get neat, twine-tied, sliced bales that store and feed easier. Your choice of separate engine or power take-off operation. The Oliver 50 ties bales 14 x 18 x 12 to 50 inches. Has a special safety device that keeps the plunger from hitting the needles. Most important—the model 50 is a baler the average farmer can afford. Stop in and see it today.



**N. G. Hershey & Son**  
 Manheim, RD. 1

**Farmersville Equipment Co.**  
 Ephrata, R.D. 2

**E. L. Herr**  
 Peach Bottom

Why is it we find so easy to mind other people's business, especially if they live in another section of the country?

**Stanley H. Deiter**

Auctioneer And Appraiser  
 1906 Willow Street Pike  
 Ph. Lancaster 4-1796