

## Farm Calendar

(If you wish your Coming Events listed in these columns, write a card or letter to LANCASTER FARMING, Quarryville, Pa. Be sure to include name of sender.—Editor).

### JULY

July 4-8—7th Annual Pennsylvania Dutch Folk Festival, Kutztown.

July 7—Farm Women's Society No. 6, auction at home of Mr. and Mrs. Ray Hixson, 401 Snyder Ave., Elizabethtown.

July 9 — Dairy Herd Improvement meeting, Wilbur Pollock Farm, three-quarters mile west of The Buck, 7 p. m.

July 10 — Dairy Herd Improvement meeting, Elmer D. Matthews Farm, five miles northeast of Downingtown, 7 p. m.

July 11 — Dairy Herd Improvement meeting, Daniel Harris Farm, seven miles north of Newark, 7 p. m.

July 11-12-14 Annual Dairy Fieldmen's conference, the Pennsylvania State University.

July 11 — Pennsylvania Vegetable Growers Association tour of Lancaster County Vegetable farms.

July 11 — Farm Women 14, homes of Mrs. Vincent Hershey, R1 Paradise.

July 12 — Society of Farm Women No. 20 meeting, home of Mrs. Park Reinhart, Kirkwood RD, 2 P. M.

July 13 — Dairy Herd Improvement meeting, Amos Hershey Farm, one and one-half miles northwest of White Horse.

July 16-20—Short Course, Improving Home Grounds, the Pennsylvania State University.

July 21 — Elm-Penryn 4H Club picnic, New Holland.

July 22 — Farm Women 3, family picnic, Brickerville Church Grove.

July 25 — Four-H Field Day, Lang's Park.

July 27 — Ward's 4H Cooking Club mets, 7 p. m.

July 29 — 1:30 p. m., Annual Open Air Sing, Kennel's Grove, three-fourths mile north of Atglen.

### AUGUST

Aug. 15-17 — Butler Farm Show.

Aug. 18-19—Intercourse Summer Jubilee.

Aug. 18 and 19—Intercourse Summer Jubilee.

Aug. 20-23—11th Annual National Flying Farmers Association Convention, New Orleans.

Aug. 20-25—Kutztown Fair.

### SEPTEMBER

Sept. 11-15—York Inter-State Fair.

Sept. 19-21 — Southern Lancaster County Community Fair, Quarryville

Sept. 26-29—Ephrata Farmers Day.

Sept. 26-28—West Lampeter Community Fair.

Sept. 30—Deadline to file for return of state taxes paid on farm tractor or farm machinery gasoline for year July 1, 1955 to June 30, 1956.

Sept. 28-Oct. 6 — National Holstein Show, Waterloo, Iowa.

### OCTOBER

Oct. 2-5—South Lebanon Community Fair, Iona.

Oct. 3-6—New Holland Farmers Fair.

Oct. 4-6—Manheim Community Fair.

Oct. 4-6—Unionville Community Fair.

Oct. 10-13—Mt. Joy Community Exhibit.

Oct. 18-20 — Dillsburg Community Fair.

### NOVEMBER

Nov 3—County Convention, Lancaster County Farm Women's Societies

### JANUARY, 1957

Jan 14-18—Pennsylvania Farm Show.

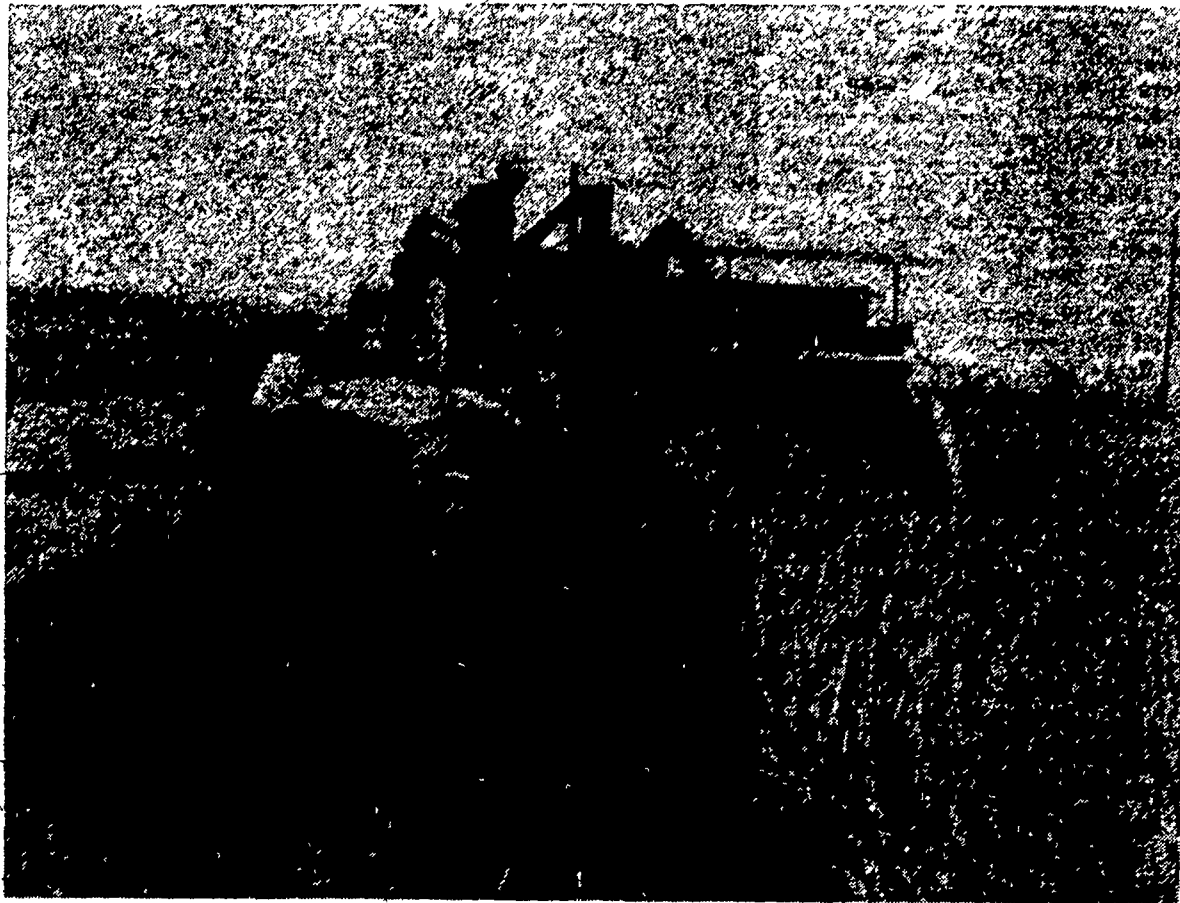
## Potato Misbranding Brings Stiff Warning

WASHINGTON — (USDA) — Disciplinary action will be taken under the Perishable Agricultural Commodities Act in all cases where farm produce in interstate commerce is misbranded or misrepresented, the U. S. Department of Agriculture announced today.

Officials cited in particular the practice of branding Russet Burbank potatoes as "Idaho Potatoes", without regard to the State in which the potatoes were produced. This is considered a violation of the PAC Act. Appropriate measures will be taken to force its discontinuance and to take disciplinary action against violators, the Department said.

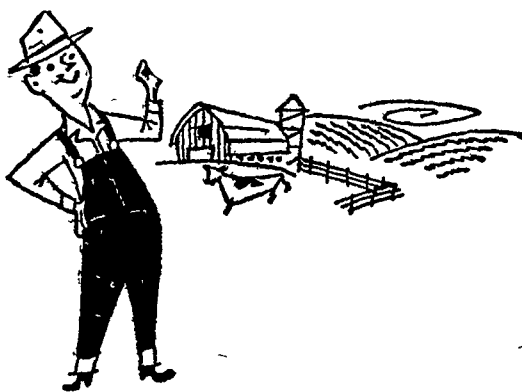
The Perishable Agricultural Commodities Act is a Federal statute administered by the Fruit and Vegetable Division of USDA's Agricultural Marketing Service. It requires the licensing of fruit and vegetable dealers, and assists in the settlement of complaints and disputes of shippers and receivers. The Act, in effect, enforces what is primarily a fair practice code set up by the industry with the assistance of the Federal Government. It seeks, also, to prevent the misbranding or misrepresenting of produce to the detriment of the industry.

## Harvest Time, Lancaster County



July is harvest time in Lancaster County. Corn is being laid by while small grains are demanding quick attention, and combining is one of the foremost duties of the day. Here, typical of the moment's activity, is a combine operating

with Richard C. Barr, on the tractor, and George Pickel, both of R1 Quarryville, on the combine. Yields are reported exceptionally good. (Lancaster Farming Staff Photo).



# ATTENTION! ALL FARMERS!

52 Weeks of



## ONLY \$1

It's Real Big News For  
Farmers and Their Families

Order Your Subscription Now!

PUBLISHED EVERY FRIDAY....

Mail This Coupon  
Today!

YOU PAY  
LESS THAN  
**2c**  
PER WEEK

Lancaster Farming  
QUARRYVILLE, PA.

1 year \$1.00  
52 Issues

Please put my name on your list of charter subscribers for a one year subscription.

Enclosed find check, cash, or money order for \$1.00  
 Bill me later

Name \_\_\_\_\_  
(Please Print)

Address \_\_\_\_\_