

Henning Seeks Animal Disease Lab in State

ST LOUIS — Dr. William L. Henning, Pennsylvania State Secretary of Agriculture, Wednesday headed a delegation of six from the Keystone State in a bid to locate a proposed new \$19 million federal animal re-

search center at or near the Pennsylvania State University at University Park, Pa.

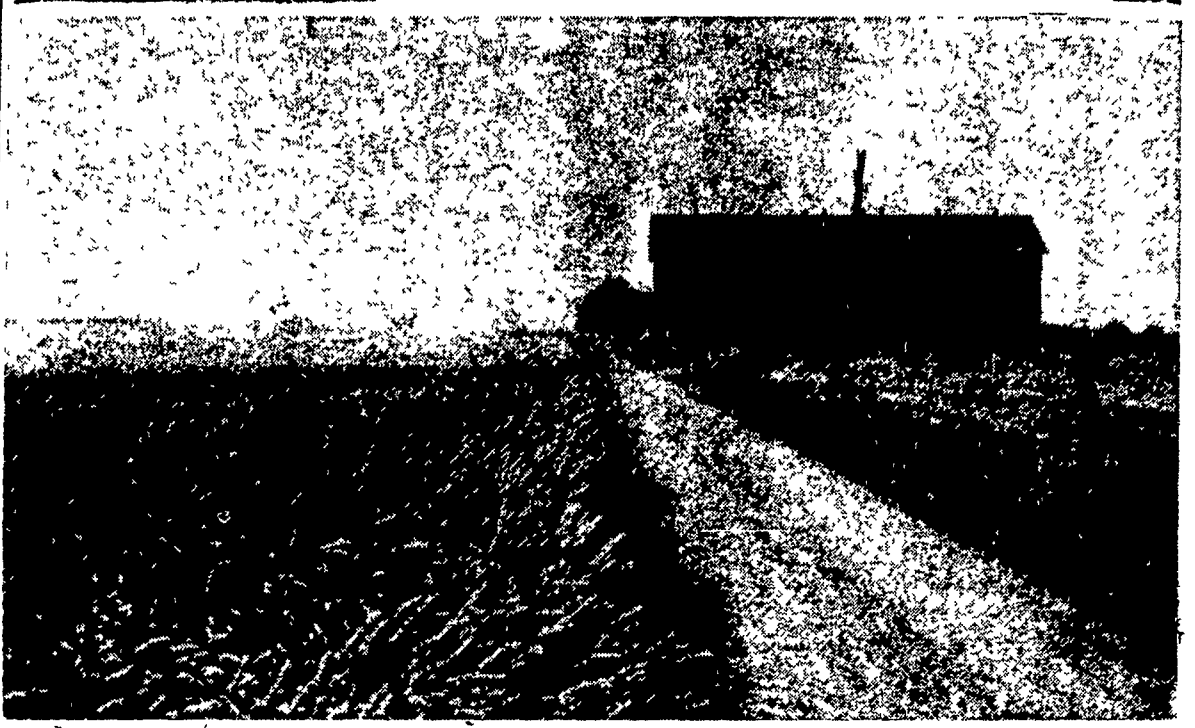
The group presented its case here late Wednesday before a scheduled meeting of the ten-member site selection committee appointed by U. S. Secretary of Agriculture Ezra Taft Benson. Delegations from a number of other states also are to appear during the 4-day meeting of the site committee, including Cornell University, Ithaca, N. Y. and Ohio State University at Columbus.

Non-Strategic Area

Dr. Milton S. Eisenhower, president of the Pennsylvania State University, according to Secretary Henning, has expressed desire for location of the research laboratory in the non-strategic University Park area.

In addition to Henning, the Pennsylvania delegation included Dr. M. A. Farrell, director of the Agricultural Experiment Station at the University; Dr. H. A. Milo, director, Bureau of Animal Industry, State Department of Agriculture; M. W. Forsythe, Greensburg, representing West Penn Power Company; Milburn Forth, representing Secretary William R. Davlin, State Department of Commerce; and Eugene M. Fulmer, secretary of the State College

Barn on Experimental Farm



Used Equipment

Truck sprayer with Myers 50-gal. per minute pump, 500 gal. tank, 14-row boom

300-gal. IronAge PTO sprayer with 30-gal. per minute pump, 10-row boom.

Small portable power sprayers of various sizes.

Lester A. Singer

RONKS Overland 7-3226

Myers Weed Sprayers, Trailer-Type & Tractor-mounted

Borough Chamber of Commerce.

In addition, David J. DelMarelle, secretary of the Lebanon County Chamber of Commerce, is to speak for a site in that county and R. T. Jones, Allentown, representing Pennsylvania Power and Light Company, plans to offer a site in the Mifflintown area within 30 miles of University Park.

Nuclear Reactor Cited

A point stressed by Henning was the presence of a nuclear reactor in operation at Penn State which could contribute to research on the nuclear value in control of livestock diseases and genetic changes in animal breeding. Dr. Farrell told of new facilities and extensive research in diseases of livestock and poultry already

underway at the University. Dr. Milo reviewed Pennsylvania leadership in control and eradication of such livestock diseases as bovine tuberculosis and brucellosis.

At the close of the hearings the committee is to select several sites for immediate personal inspection by members.

Farm Crops in State Advance; Soil Is Moist

HARRISBURG — Pennsylvania farm crops, under favorable weather and soil conditions, during the past week began making up for lost time caused by the late arrival of spring, according to the weather and crop survey for the week ended Monday, announced today by the State Department of Agriculture.

Weather was cool at the start of the week but warmed up toward the end. There was adequate soil moisture and all vegetation advanced rapidly. Temperatures were above average for the second consecutive week. Thunderstorms were frequent.

Corn Being Cultivated

While field work was restricted in some areas by wet fields, farmers made good progress in cultivating corn, making hay and spraying for weed and insect control. Showers replenished soil moisture in areas that were becoming dry.

Harvesting of barley has started on a limited scale in southern Pennsylvania counties. Corn made good progress and wheat is beginning to color and oats are forming heads in the south. Cool weather at the start of the week was beneficial to oats, the Department said.

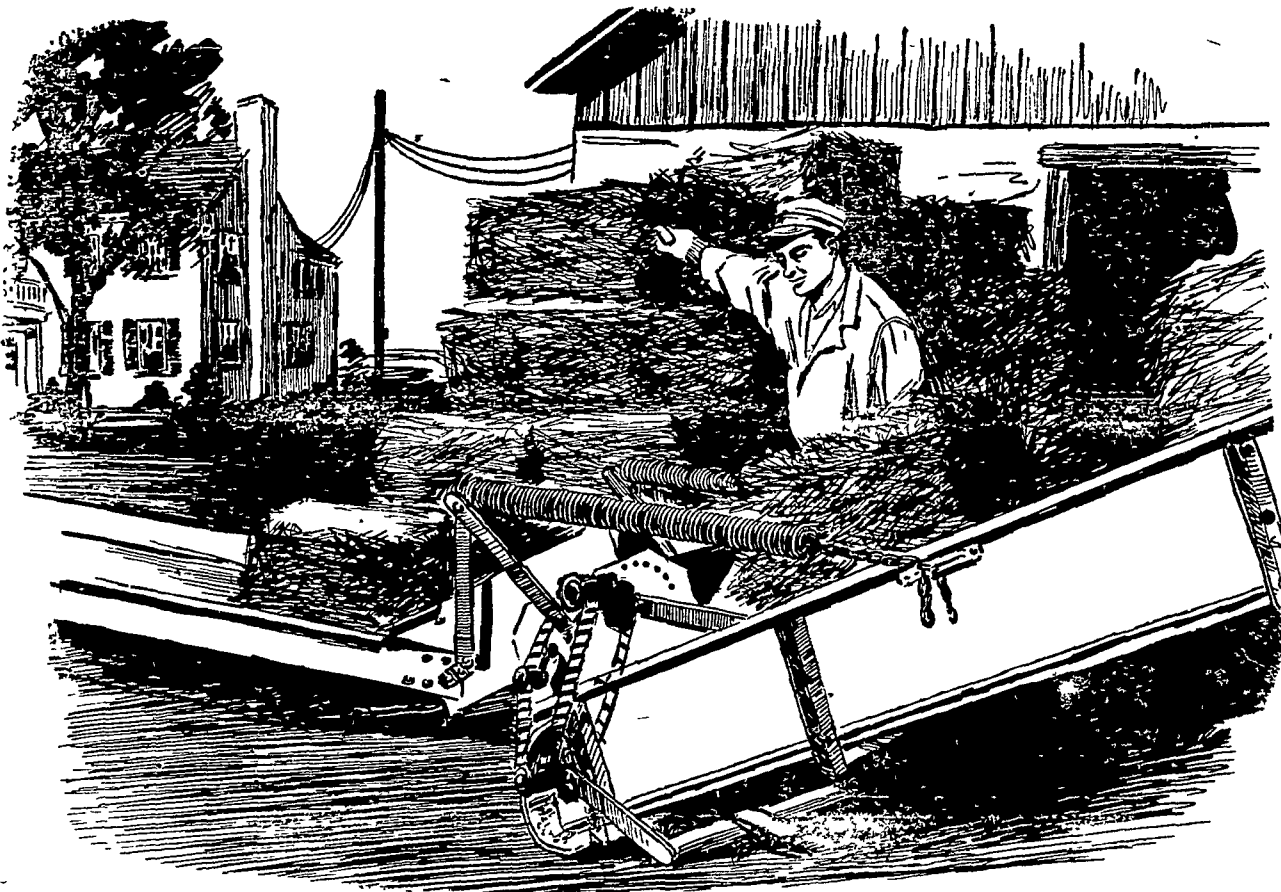
First cuttings of hay are nearly completed in southern parts of the State and getting underway in the north. Yields are reported generally good. Some difficulty was encountered in curing hay cuttings due to showers and cloudy weather. Pastures are generally good and will benefit from recent showers.

Good stands of potatoes are reported and growth is satisfactory. Early cobs are in bloom in the southeastern counties.

Some Cherries Ripe

Setting of tobacco plants is about completed and fields are making a satisfactory start. Harvest of strawberries is declining in the south, well underway in the central areas and starting in northern counties.

A few early sour and sweet cherries are ripe in the southeast. Other fruit sized rapidly. Some early beets, broccoli and cabbage appeared on the fresh market.



ARE YOUR ELECTRIC HIRED HANDS STARVED FOR POWER?

Most of today's farms and farm homes are struggling along with outdated electrical wiring systems. In other words, service entrances are inadequate, limiting the amount of electricity which can be brought into the farm and farm home . . . they're short on the number of circuits . . . and they're lacking in the number of electrical outlets. Electrical equipment and appliances are starved for power and they can't do their best work. Furthermore, already overloaded wiring systems leave no room for the addition of other work- and time-

saving appliances or equipment.

Top-profit farming and enjoyable farm living require modern wiring. With the proper wiring system you can be sure enough electricity is being brought into your farm and farm home and distributed safely and efficiently to your electric hired hands.

Make sure your wiring meets your requirements. See your farm and home wiring contractor or electrician today. He can tell you what you need in the way of wiring to help you LIVE BETTER, FARM BETTER . . . ELECTRICALLY!

PENNSYLVANIA POWER & LIGHT COMPANY